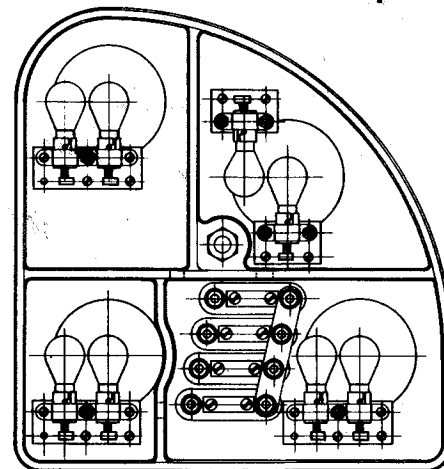
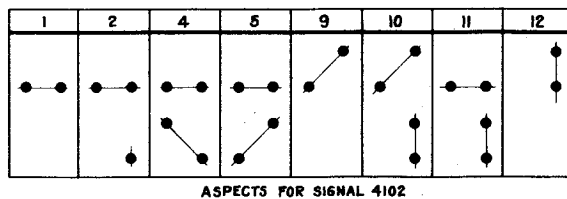
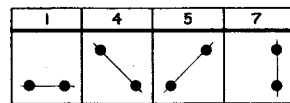
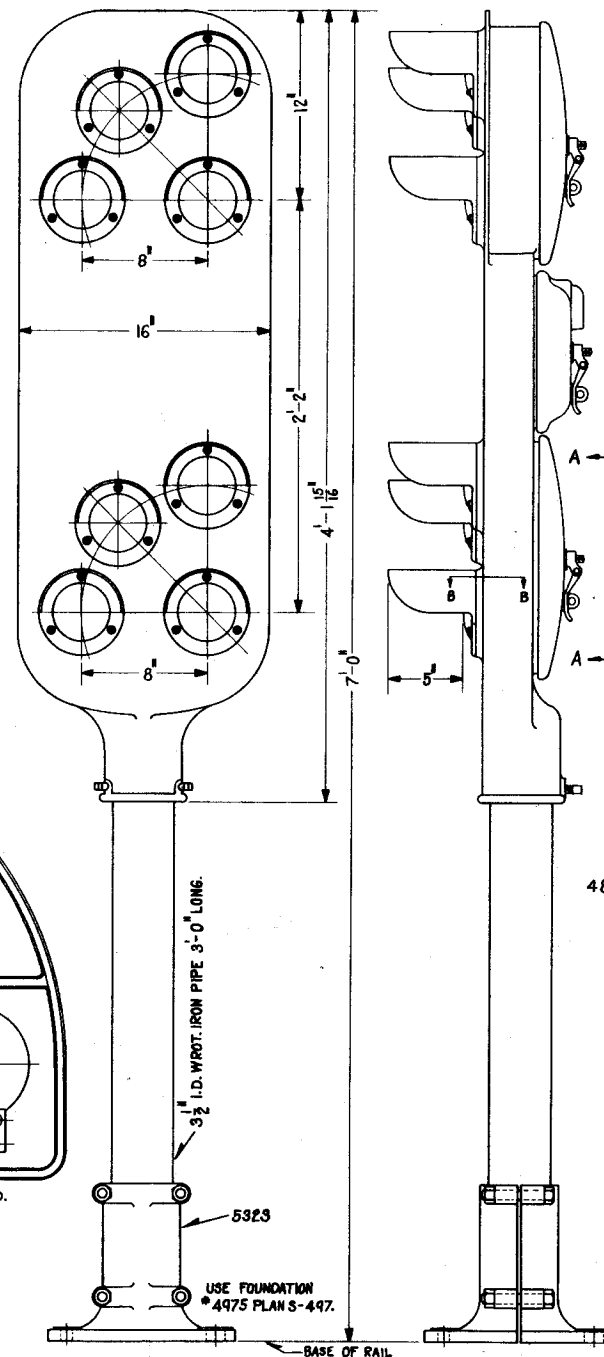


4101-DWARF SIGNAL



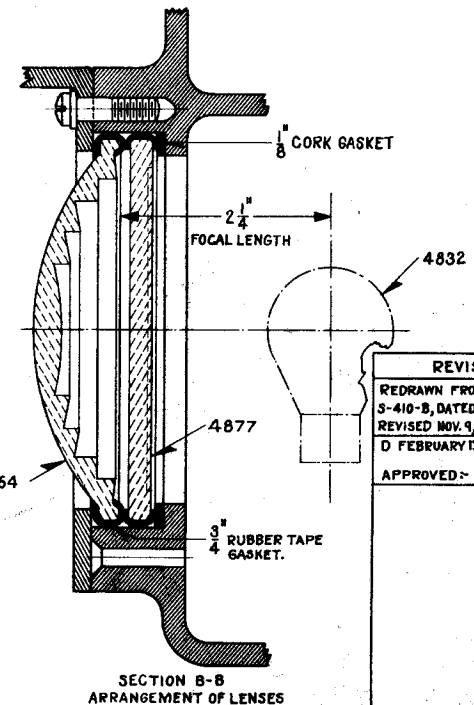
VIEW A-A WITH BACK COVER PLATE REMOVED.



4102-PEDESTAL SIGNAL

NOTE:-

1. WHEN ORDERING SIGNALS, SPECIFY FIGURE NUMBER, TOGETHER WITH ASPECTS DESIRED.
2. SIGNALS SHALL BE FURNISHED COMPLETE AS SHOWN WITHOUT LAMPS.
3. WHEN INSTALLING, SIGNALS SHALL BE WIRED IN ACCORDANCE WITH STANDARD PLAN S-858.
4. ALL INDICATIONS NOT USED SHALL BE BLANKED.



REVISIONS	
REDRAWN FROM APPROVED PLAN S-410-B, DATED FEB. 11, 1922, LAST REVISED NOV. 9, 1926 AND RE-REVISIONED FEBRUARY 13, 1934.	
APPROVED:	<i>Attard</i>

1 SHEET

S-410-D



THE PENNSYLVANIA RAILROAD
STANDARD

SIGNALS

POSITION LIGHT

OFFICE OF CHIEF SIGNAL ENGINEER, PHILA., PA., FEB. 2, 1935.
Approved *Attard* Chief Signal Engineer
Approved *W. H. H.* Chief Engineer.