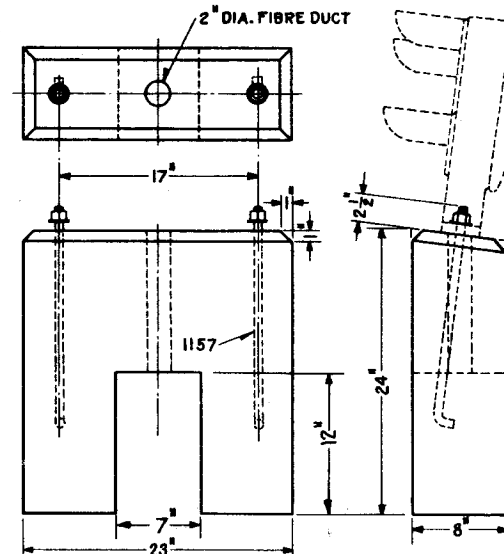
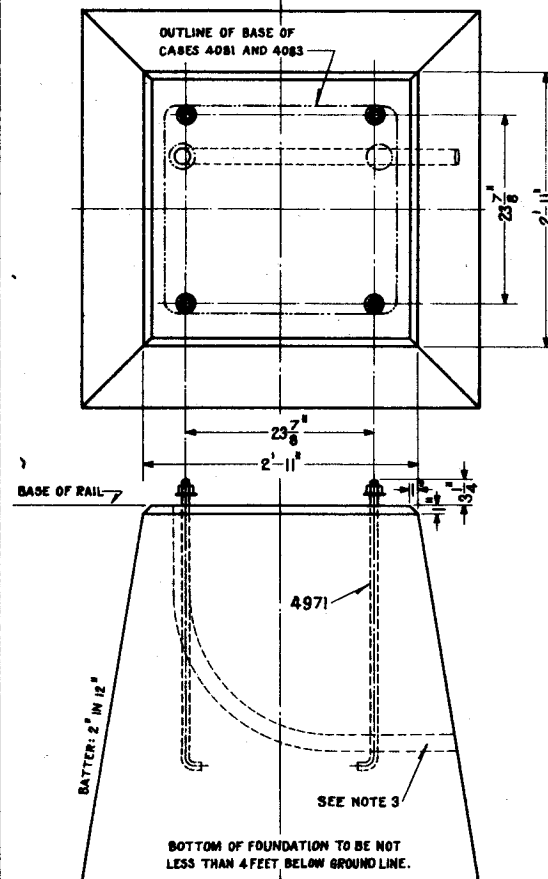


4971 HOOK BOLT O.H.S.
A. R. A. MAN. 1924

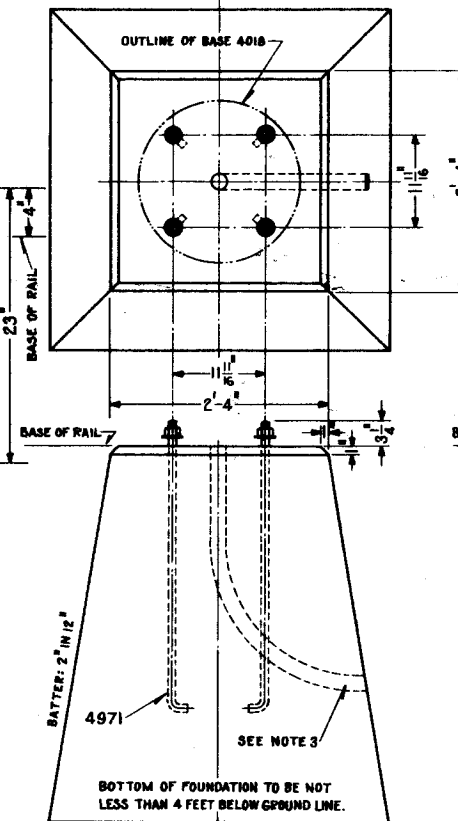
Ref. 307



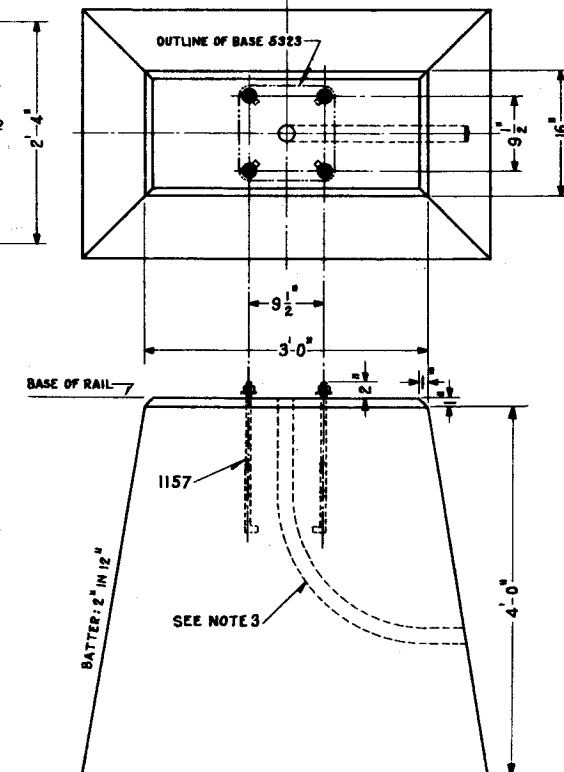
4973 FOUNDATION



4972 FOUNDATION



4974 FOUNDATION



4975 FOUNDATION

FOUNDATION	FOR USE WITH
4972	SIGNALS 4062, 4063 INSTRUMENT CASES 4081, 4083
4973	SIGNAL 4101
4974	SIGNALS 4001, 4061
4975	SIGNAL 4102

NOTE:-

1. CENTER OF FOUNDATIONS 4972, 4974 AND 4975 SHALL BE 7 FEET 6 INCHES MIN. FROM GAUGE LINE OF RIGHT HAND RAIL OF TRACK GOVERNED.
2. CENTER OF FOUNDATION 4973, WHEN BETWEEN TRACKS, SHALL BE LOCATED ON THE CENTER-LINE OF INTER-TRACK SPACE; WHEN OUTSIDE OF TRACK NOT LESS THAN 4 FEET 3 INCHES FROM GAUGE LINE OF RIGHT HAND RAIL OF TRACK GOVERNED.
3. 2 INCH DIA. FIBRE DUCT WITH 18 INCH RAD. BEND. THE LOCATION OF DUCT MAY BE CHANGED TO SUIT LOCAL CONDITIONS.
4. CONCRETE SHALL BE IN ACCORDANCE WITH A. R. A. SIGNAL SECTION SPECIFICATION NO. 1111.

REVISIONS
REDRAWN FROM APPROVED PLAN S-497-C, DATED JAN. 28, 1927 AND REVISED.
E JULY 20, 1934.
APPROVED <i>ant</i>

1 SHEET

S-497-E



**THE PENNSYLVANIA RAILROAD
STANDARD
FOUNDATIONS**

FOR POSITION LIGHT SIGNALS AND INSTRUMENT CASES
OFFICE OF CHIEF SIGNAL ENGINEER, PHILA., PA., FEB. 15, 1934

Approved *ant*
Chief Signal Engineer

Approved *ant*
Chief Engineer