



ATLAS O Pratt Truss Bridge Parts List

For Either Single or Double Track Styles



Long Upper Crossmember
4 Pieces



Vertical Truss
Joint Peg
14 Pieces



Crossmember
Joiner Plate
8 Pieces



Truss Support
Cover Plate 4
Pieces



Short Upper Crossmember
8 Pieces



Truss End
Block
4 Pieces



Middle Truss Support
3 Pieces



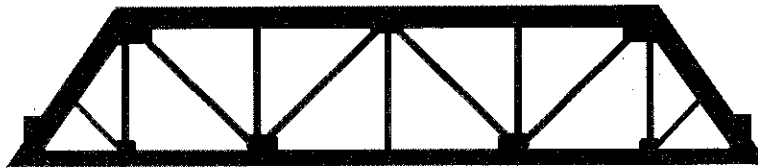
End Truss Support
2 Pieces



Underside Crossmember Joiner
6 Pieces



Underside Crossmember
6 Pieces



Vertical Truss
2 Pieces



DECK
1 Piece

Recommended Tools For Assembly Of Your Atlas O Pratt Truss Bridge

- # 1 Phillips Screwdriver
- Needle - Nose Pliers
- Super Glue (ACC)
- All Purpose Plastic Cement (optional)

Please Read Before Assembly

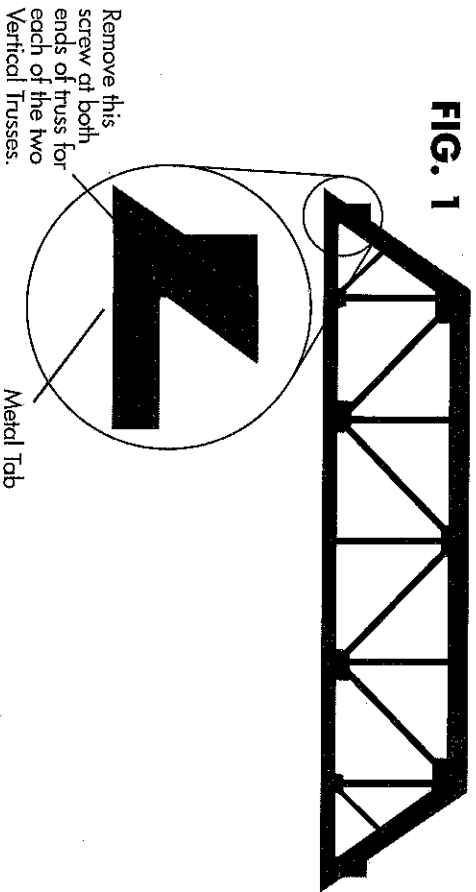
Your Atlas O Pratt Truss Bridge Kit comes partially assembled for your convenience. This kit is designed for simple snap assembly, however you may desire to use glue for a more permanent assembly. If you plan on adding a second track to your bridge (requiring disassembly), it is strongly recommended that super glue (ACC) is used sparingly if at all. The use of plastic cement will cause a more permanent bond and will most certainly make disassembly, without damage to your bridge, impossible. Careful attention to the assembly directions will provide a properly and beautifully assembled Pratt Truss Bridge for years of enjoyment on your layout.

Assembling Your Atlas O Pratt Truss Bridge

STEP #1

Remove screws from metal tabs on each end of both Vertical Trusses using a #1 Phillips screw driver. (See **Fig. 1**) Do not discard screws as they will be required for assembly.

FIG. 1

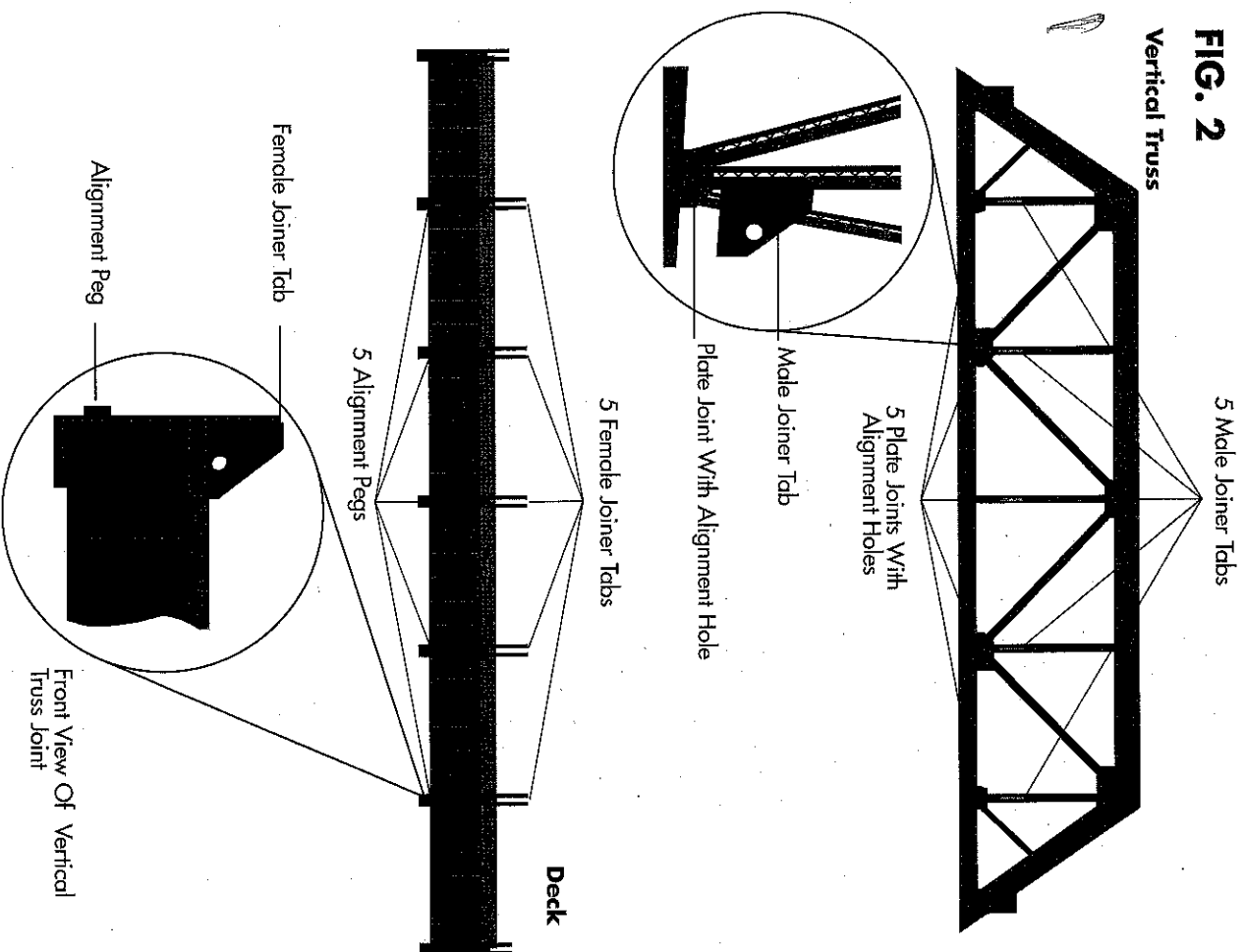


STEP #2

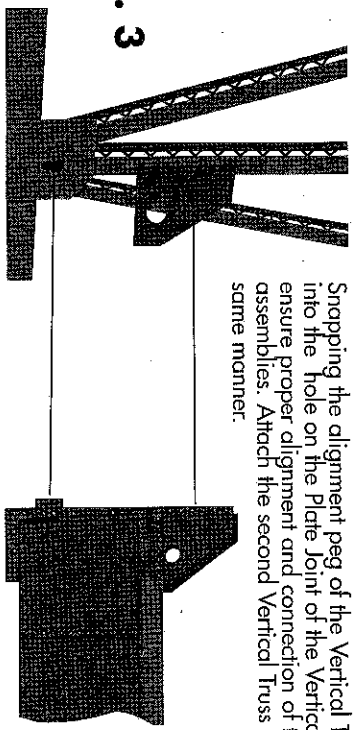
Please Note The Following:

- The Vertical Trusses have alignment holes in each of the five plate joints.
- The Vertical Trusses have male joiner tabs above each of the five plate joints.
- The Deck has five Vertical Truss Joints on each side. Each of the Vertical Truss Joints has a female joiner tab as well as an alignment peg. See **Fig. 2**

FIG. 2



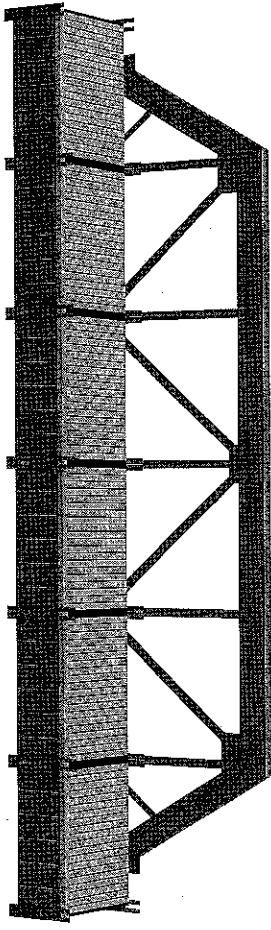
- Align the Vertical Truss with the Deck. Slide the five male joiner tabs of the Vertical Truss into the female joiner tabs of the Deck also making sure that the alignment pegs snap into the holes in the five joint plate of the Vertical Truss. (See **Fig. 3**)
- Attach the second Vertical Truss in the same manner.



Snapping the alignment peg of the Vertical Truss Joint into the hole on the Plate Joint of the Vertical Truss will ensure proper alignment and connection of the two assemblies. Attach the second Vertical Truss in the same manner.

FIG. 3

Correct attachment of the two assemblies



STEP #3

Screw ends of Deck to metal tabs on each end of the Vertical Trusses. (See Fig. 4) Use the screws that were removed from metal tabs in Step #1.

FIG. 4

End view of Vertical Trusses

End view of Deck

Top view of Bridge Assembly

Metal Tab

Put screws in holes through to the metal tabs and tighten.

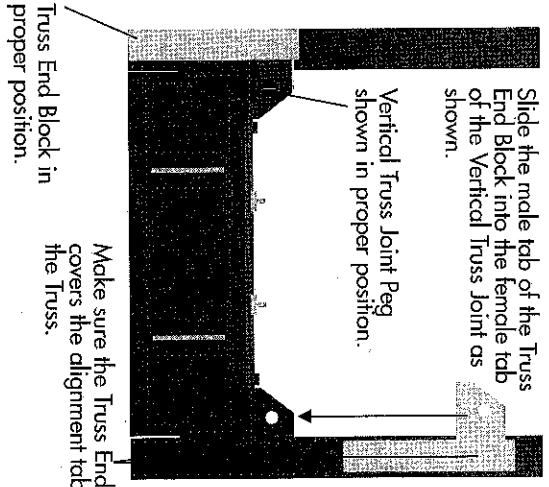
STEP #4

- Attach the four Truss End Blocks to the ends of the Bridge Assembly by inserting the male tab of the Block into the female tab of the Vertical Truss Joint, making sure the Block covers the two alignment tabs on the Truss. Once the Block is in place, insert the Vertical Truss Joint Peg through the holes in the Vertical Truss Joint Tabs making sure that the head of the peg faces towards the center of the bridge. (See Fig. 5)
- Insert the remaining 10 pegs into the rest of the Vertical Truss Joints. (These may face either direction.)

FIG. 5

End view of Bridge Assembly

Top view of Bridge Assembly

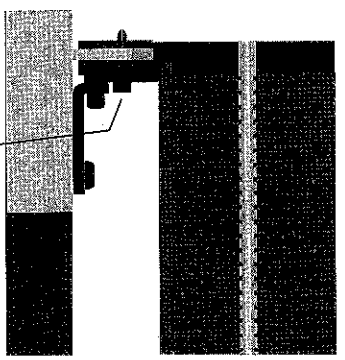


Slide the male tab of the Truss End Block into the female tab of the Vertical Truss Joint as shown.

Vertical Truss Joint Peg shown in proper position.

Truss End Block in proper position.

Make sure the Truss End Block covers the alignment tabs on the Truss.



Vertical Truss Joint Peg in proper position as viewed from above.

Slide the male tab of the Truss End Block into the female tab of the Vertical Truss Joint. Be sure to cover the alignment tabs on the Truss. Once the Block is in the proper position, insert the Vertical Truss Joint Peg into the hole of the male/female tabs as shown.

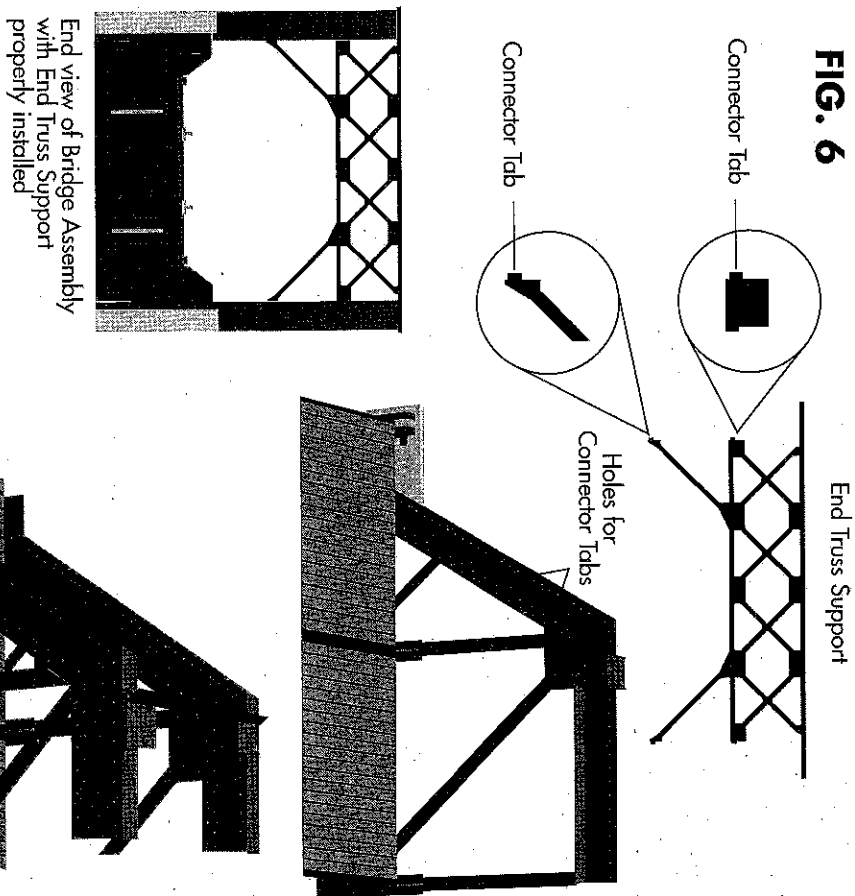
Vertical Truss Joint Peg

Alignment tabs

STEP #5

- Connect the End Truss Supports to the Vertical Trusses. (See Fig. 6)

FIG. 6

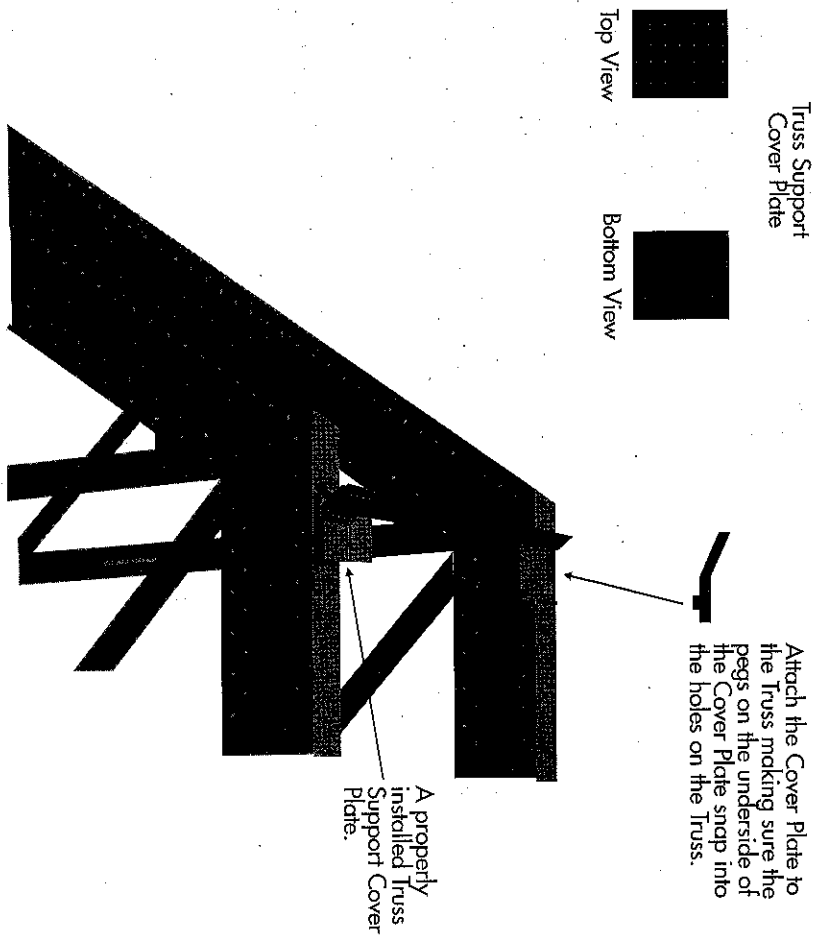


NOTE: Installation is the same for both End Truss Supports.

STEP #6

- Attach End Truss Support Cover Plate to top of Vertical Trusses. (See Fig. 7)

FIG. 7



STEP #7

Please Note The Following:

- The Middle Truss Supports have three connector tabs on each side. Two of these tabs have holes in them.
- Three Vertical Members on each Truss have two tabs with pegs.
- Directly above the Vertical Members is a slot in the Horizontal Member of the Truss. (See Fig. 8a and 8b)

FIG. 8a

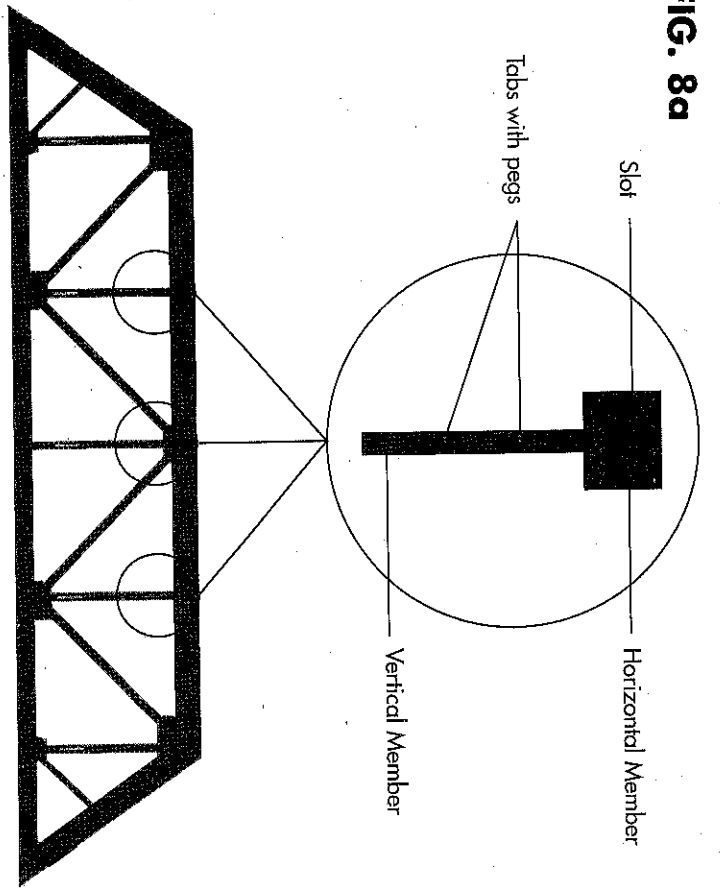
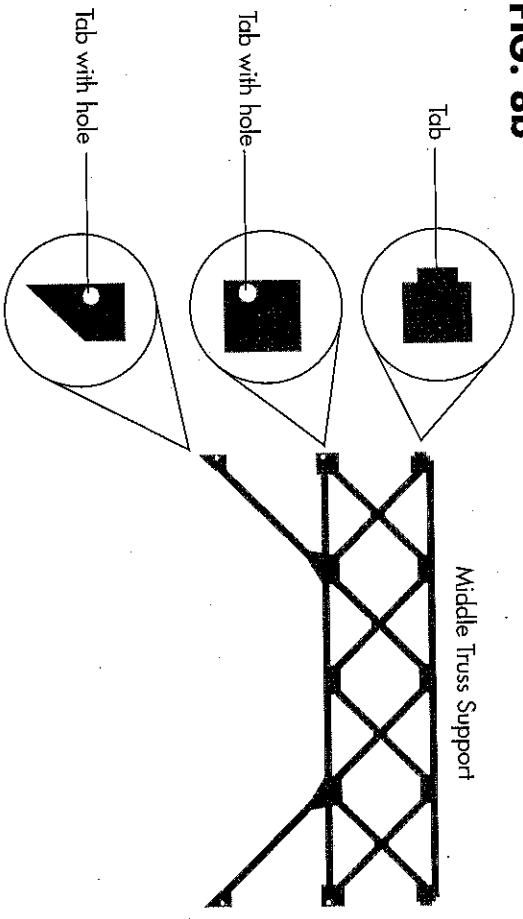


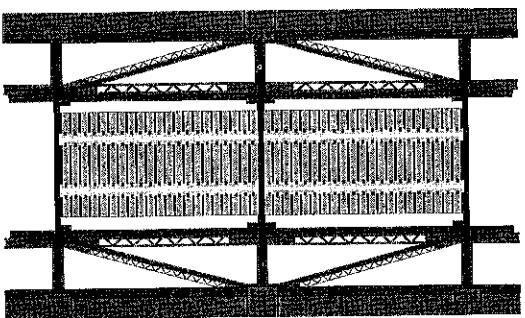
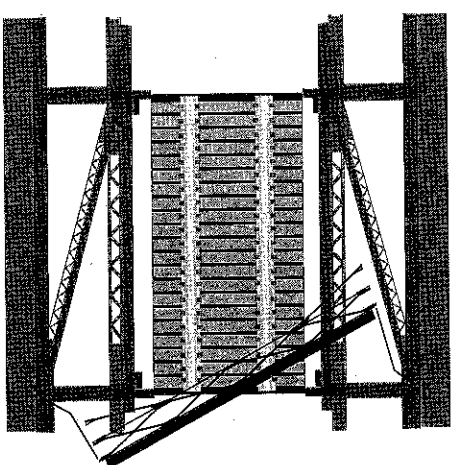
FIG. 8b



Hold the Middle Truss Support diagonally above the two Vertical Trusses. Slide the Middle Truss Support between the two Vertical Trusses and twist into place, making sure the top tabs slide into the slots on the Horizontal Member of the Truss. Snap the pegs on the tabs of the Vertical member into the holes of the tabs on the Middle Truss Support. (See Fig. 9)

NOTE: You may find it easier to snap the pegs into their corresponding holes using a pair of needle nose pliers.

FIG. 9



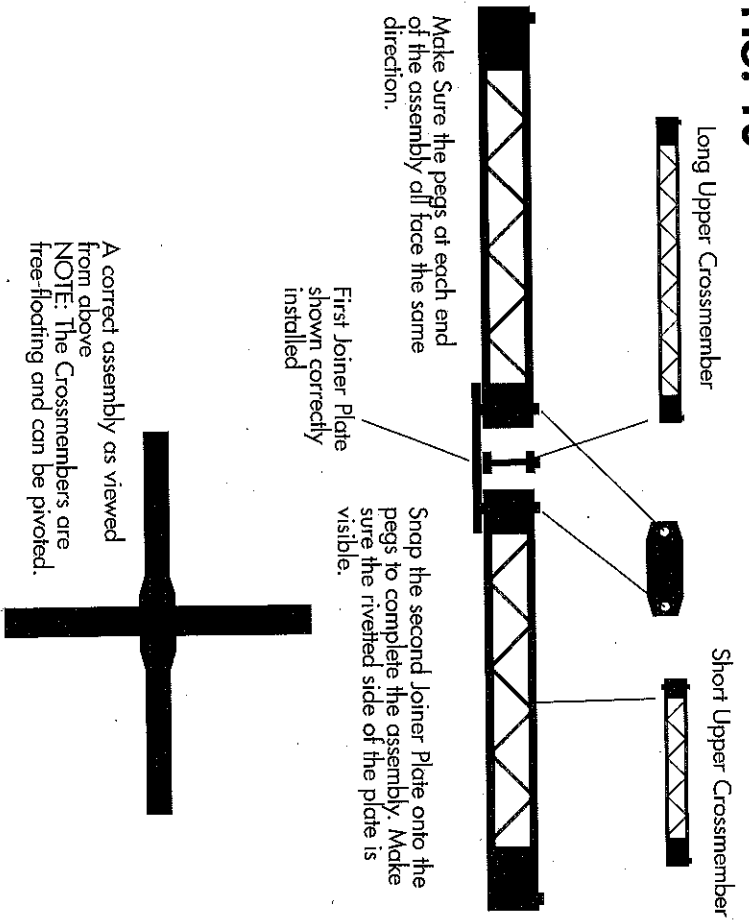
Twist the Middle Truss Support snapping the tabs into the slots on the Horizontal Members. Then snap the pegs on the Vertical Members through the other four tabs on the Truss Support.

Top view of Bridge with all three Middle Truss Supports properly installed

STEP #8

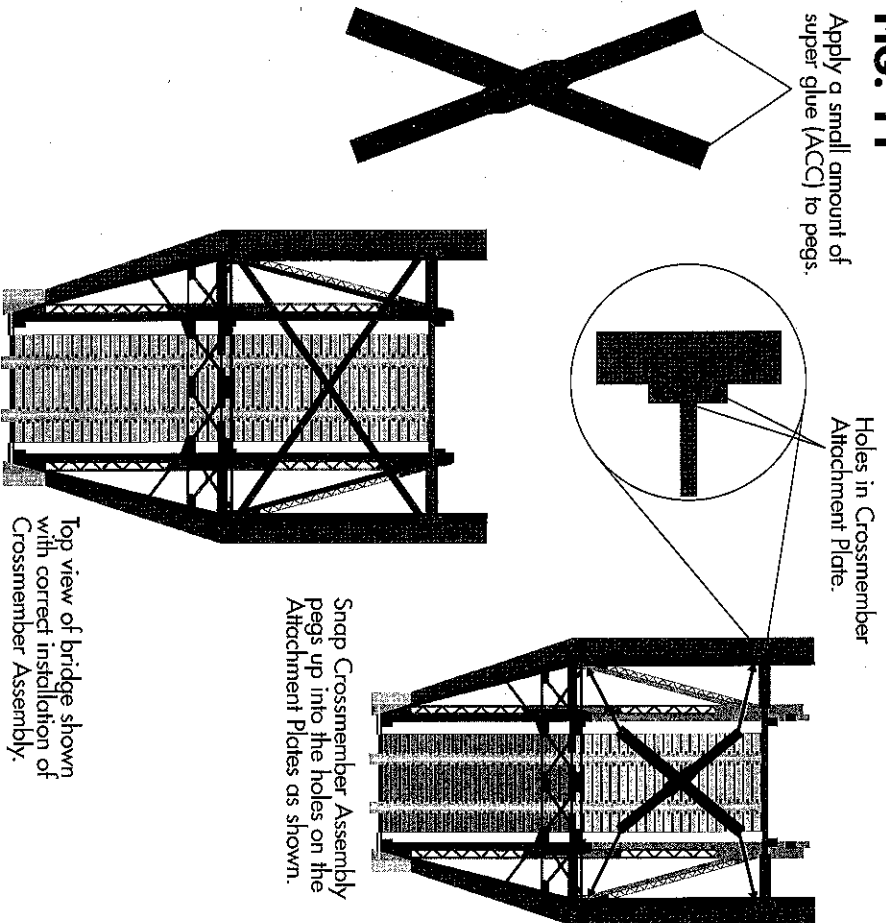
- Attach one Crossmember Joiner Plate to two Short Upper Crossmembers. Make sure that the ends of the Crossmembers with just one peg are facing in the same direction. Then center the Long Upper Crossmember between the two Short Crossmembers making sure the pegs are facing in the same direction as the pegs on the joined Short Crossmembers. (See Fig. 10)
- Repeat this process until you have four complete Upper Crossmember Assemblies.

FIG. 10



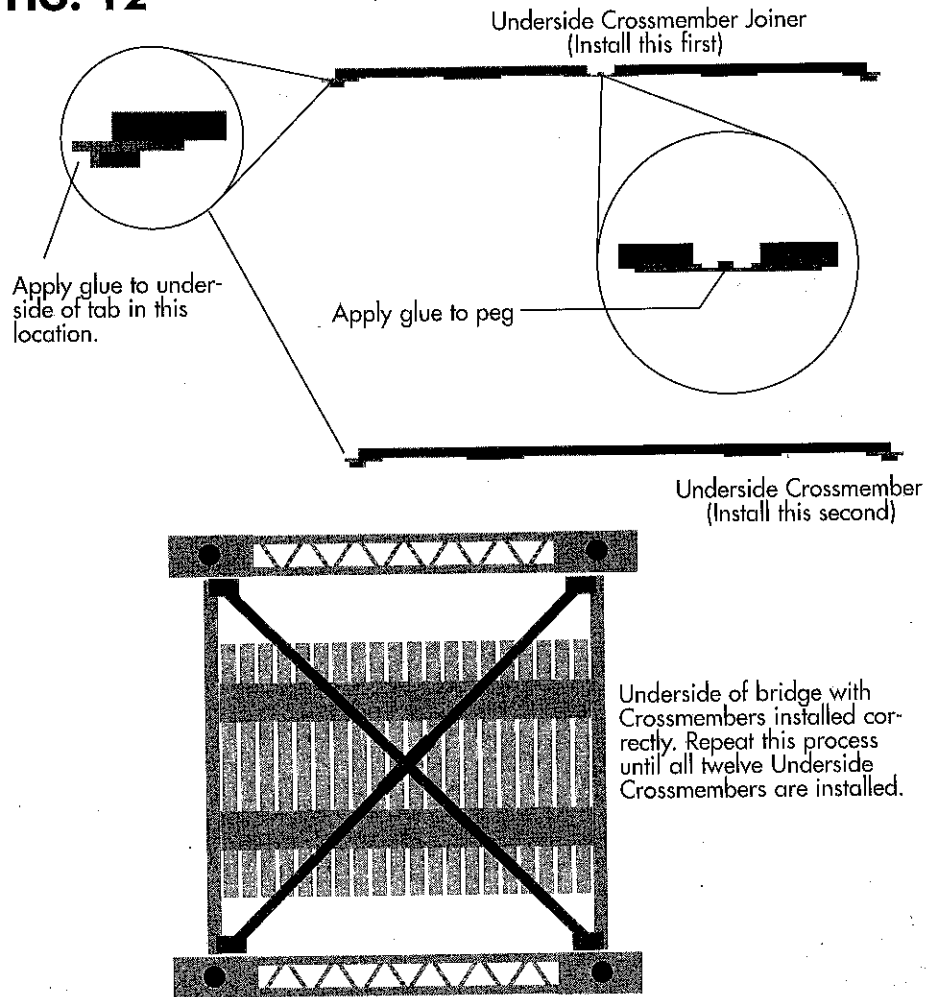
- STEP #9**
- Adjust the Crossmember assembly so that the pieces are diagonal to each other with the pegs on the ends of the Crossmembers facing up. Slide the assembly through the top of the bridge and inbetween the Truss Supports. Snap the pegs at the ends of each Crossmember up into the holes in the Crossmember Attachment Plates. Repeat this process for all four Crossmember Assemblies. (See Fig. 11)
- NOTE: A small amount of super glue (ACC) will be required on the pegs of the crossmembers to ensure they stay snapped into the holes of the Attachment Plates.**

FIG. 11



- STEP #10**
- Turn your Atlas O Pratt Truss Bridge upside down. Apply a small amount of glue to the tabs on each end of the Underside Crossmember Joiner. Attach the Crossmember to the deck supports. Apply a small amount of glue to the tabs on each end and to the small hole in the middle of the crossmember. Attach the Crossmember to the deck in the same manner making sure that the peg in the middle of the Joiner Crossmember snaps into the hole in the middle of the second Crossmember. (See Fig. 12)
- NOTE: This step is optional.**

FIG. 12



Warranty

If service is required within the warranty period, this item may be sent to the Atlas O Customer Service Dept. Make sure the item is packed to prevent shipping damage; if possible send in original package to:

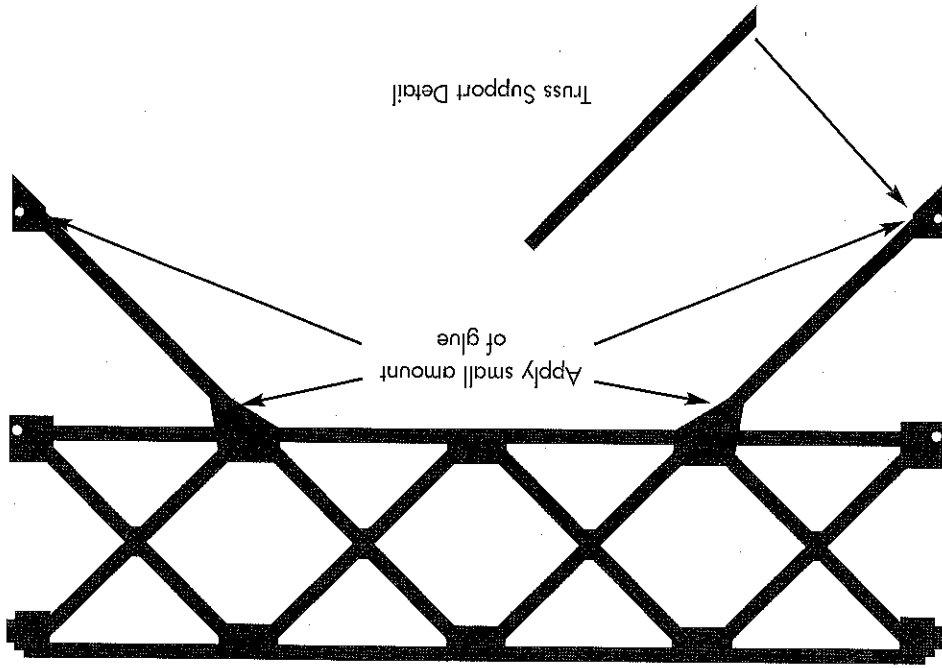
ATLAS O CUSTOMER SERVICE DEPT.
ATLAS O, 378 FLORENCE AVE., HILLSIDE, NJ 07205

www.atlasO.com
Atlas O, LLC • 378 Florence Avenue • Hillside • NJ • 07205 • USA



ATLAS O Pratt Truss Bridge Addendum

Middle Truss Support



After applying a small amount of glue to the areas indicated, attach the Truss Detail to the Middle Truss Support. Do this for all 3 Middle Truss Supports. This should be done before step #7 of the kit Manual.