



PARTS LISTS AND EXPLODED DIAGRAMS

SUPPLEMENT 23

By Gary T. Svehar

Edited by Cindy Lee Floyd

*Diagrams by Steven Gugel and
Lionel Trains, Inc.*

Notice to the User

This supplement is designed to fit with two different publications, the *Lionel Service Manual* by Lionel Trains, Inc., and *Lionel Parts Lists and Exploded Diagrams* published by Greenberg Publishing Company, Inc. Each page has two page numbers. The number for the *Lionel Service Manual* is indicated by parentheses, e.g., (A-35). The number which applies to *Lionel Parts Lists and Exploded Diagrams* is above the parentheses, e.g., S23:1-3.

We recommend that readers with the *Lionel Service Manual* insert the pages according to the numbers in the parentheses. On the other hand, we recommend that readers with *Lionel Parts Lists and Exploded Diagrams* keep the pages as a set and insert them into a Supplement binder. Binders to match the 1970-1986 binder are available from Kalmbach Publishing, for \$9.95 plus \$3.00 shipping and handling. Please call 1-800-533-6464 to place your order. A comprehensive index to the *Lionel Parts Lists and Exploded Diagrams* will be issued periodically, and will take the place of the index at the front of the original 1970-1986 manual.

Authorized by Lionel® Trains, Inc.

Published by Greenberg® Publishing Company, Inc.

Copyright © 1993 by Lionel Trains, Inc.

All rights reserved.

Greenberg Publishing Company, Inc.

7566 Main Street

Sykesville, Maryland 21784

(410) 795-7447

Manufactured in the United States of America

All rights reserved. No part of this book may be reproduced in any form or by any means, including electronic, photocopying or recording, or by any information storage system, without written permission of the publisher, except in the case of brief quotations used in critical articles and reviews.

Greenberg Publishing Company, Inc., publishes the world's largest selection of Lionel, American Flyer, LGB, Marx, Ives, and other toy train publications as well as a selection of books on model and prototype railroading, dollhouse building, and collectible toys. For a complete listing of current Greenberg publications, please call 1-800-533-6644 or write to Kalmbach Publishing Co., 21027 Crossroads Circle, Waukesha, Wisconsin 53187.

Greenberg Shows, Inc., sponsors *Greenberg's Great Train, Dollhouse and Toy Shows*, the world's largest of its kind. The shows feature extravagant operating train layouts and a display of magnificent dollhouses. The shows also present a huge marketplace of model and toy trains, for HO, N, and Z Scales; Lionel O and Standard Gauges; and S and 1 Gauges; plus layout accessories and railroadingiana. They also offer a large selection of dollhouse miniatures and building materials, and collectible toys. Shows are scheduled along the East Coast each year from Massachusetts to Florida. For a list of our current shows, please call (410) 795-7447 or write to Greenberg Shows, Inc., 7566 Main Street, Sykesville, Maryland 21784 and request a show brochure.

Greenberg Auctions, a division of Greenberg Shows, Inc., offers nationally advertised auctions of toy trains and toys. Please contact our auction manager at (410) 795-7447 for further information.

ISBN 0-89778-371-9

ALPHABETICAL INDEX TO LIONEL PARTS LISTS AND EXPLODED DIAGRAMS SUPPLEMENT 23

ALPHABETICAL INDEX

O AND O27 GAUGES

Diesel Engines and Electrics

44-Ton Diesel Switcher S23:1-1, 2, 3
1-8905

Steam Locomotives

2-8-2 Mikado S23:3-1, 2, 3, 4
1-8018
Shay S23:3-5, 6
1-8023

Tenders

Shay Tender S23:3-7
691-8023-T01
Southern Tender S23:4-1, 2
691-8018-T01

Operating Cars

Brakeman Car S23:11-1, 2
1-9811 1-9815
Flatcar with Submarine S23:11-3, 4
1-6351 610-6351-002

Accessories

Forklift Loader S23:14-1, 2
1-2798
Steam Clean and Wheel Grind Shop S23:14-3, 4, 5, 6, 7, 8
1-2767

**NUMERICAL INDEX TO
LIONEL PARTS LISTS AND EXPLODED DIAGRAMS
SUPPLEMENT 23**

NUMERICAL LISTING

1-2767	S23:14-3, 4, 5, 6, 7, 8	1-9811	S23:11-1, 2
1-2798	S23:14-1, 2	1-9815	S23:11-1, 2
1-6351	S23:11-3, 4	610-6351-002	S23:11-4
1-8018	S23:3-1, 2, 3, 4	691-8018-T01	S23:4-1, 2
1-8023	S23:3-5, 6	691-8023-T01	S23:3-7
1-8905	S23:1-1, 2, 3		

LIONEL SERVICE MANUAL

BY LIONEL SERVICE

Supplement 23

Description	Drawing
Diesel Engines and Electrics:	
44-Ton Diesel Switcher 1-8905	(A-52), (A-52-2), (A-52-3)
Steam Locomotives:	
2-8-2 Mikado 1-8018	(A-51), (A-51-2), (A-51-3), (A-51-4)
Shay 1-8023	(A-53), (A-53-2)
Tenders:	
Shay 691-8023-T01	(A-53-3)
Southern 691-8018-T01	(C-37), (C-37-2)
Operating Cars:	
Brakeman Car 1-9811 1-9815	(F-99), (F-99-2)
Boxcars, Refrigerator Cars, and Stock Cars:	
Flatcar with Submarine 1-6351	(F-100), (F-100-2)
Accessories:	
Forklift Loader 1-2798	(I-44), (I-44-2)
Steam Clean and Wheel Grind Shop 1-2767	(I-45), (I-45-2), (I-45-3), (I-45-4), (I-45-5), (I-45-6)

44-TON DIESEL SWITCHER 1-8905 Pennsylvania

(Page 1 of 3)

600-8040-151
Lens

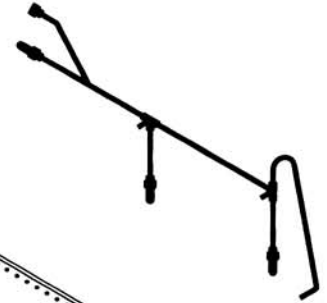


610-8905-007
Cab

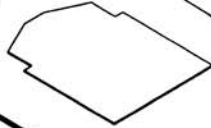
600-0050-100
Horn



610-8905-026
Handrails Set



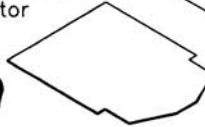
610-8811-146
Reflector



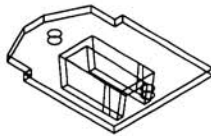
600-8040-151
Lens



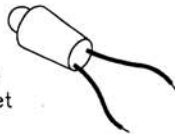
610-8811-146
Reflector



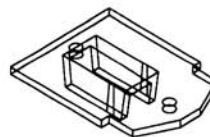
610-8905-085
Lamp Retainer



600-8352-300
Lamp and Socket
Assembly



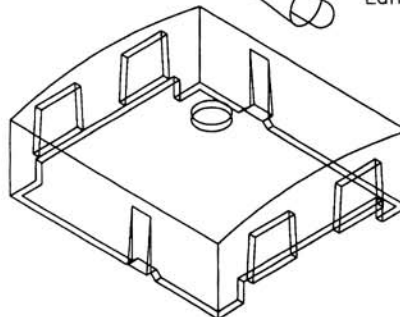
610-8905-085
Lamp Retainer



600-8352-300
Lamp and Socket
Assembly

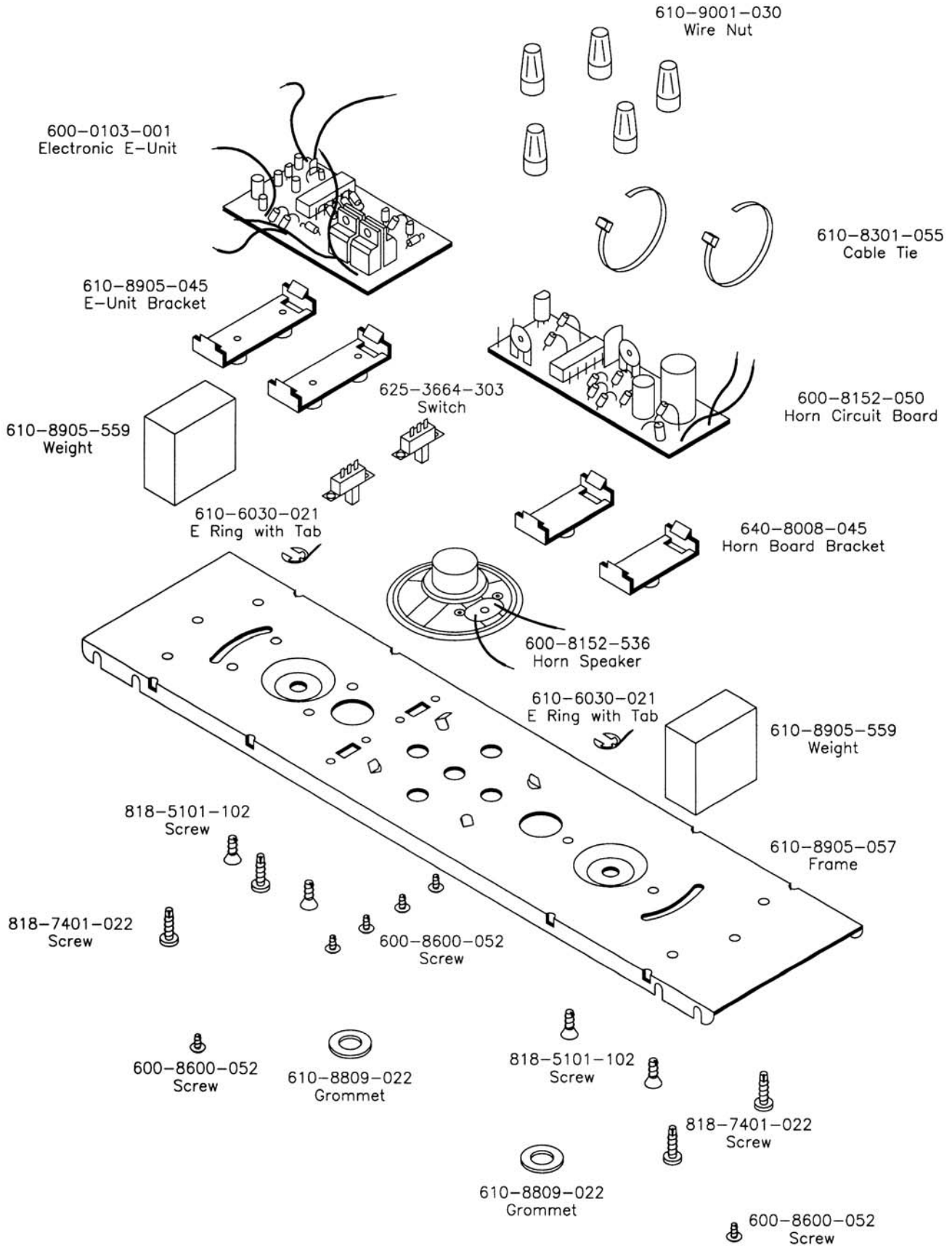


610-8905-015
Window Shell



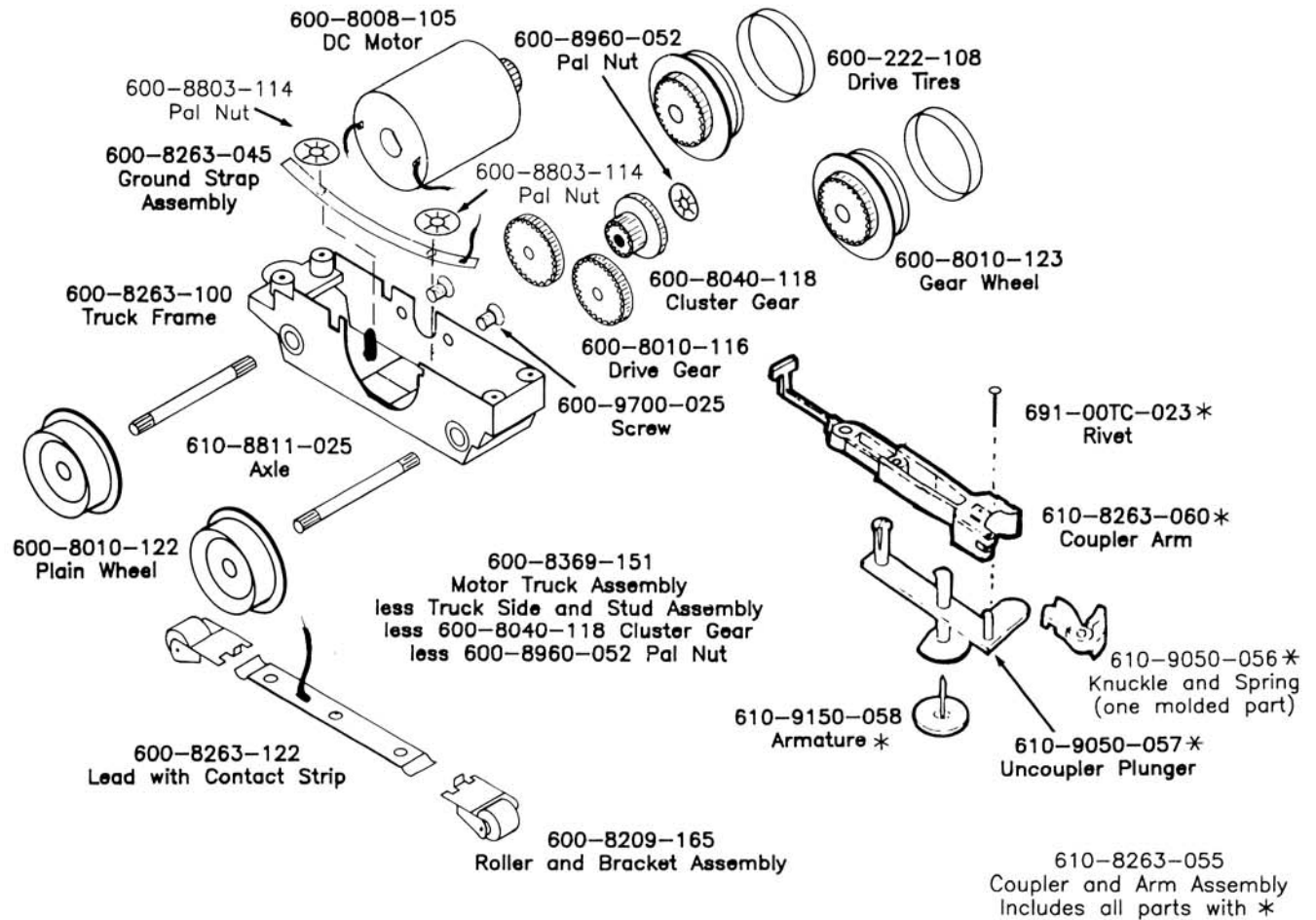
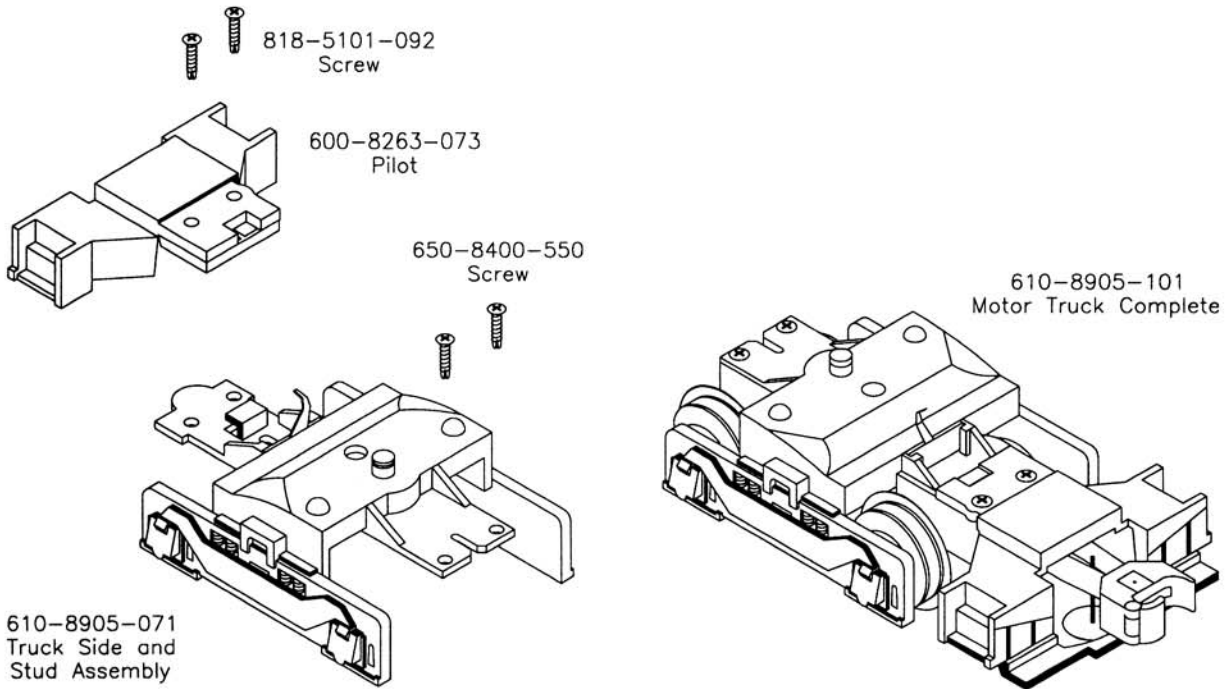
44-TON DIESEL SWITCHER 1-8905 Pennsylvania

(Page 2 of 3)

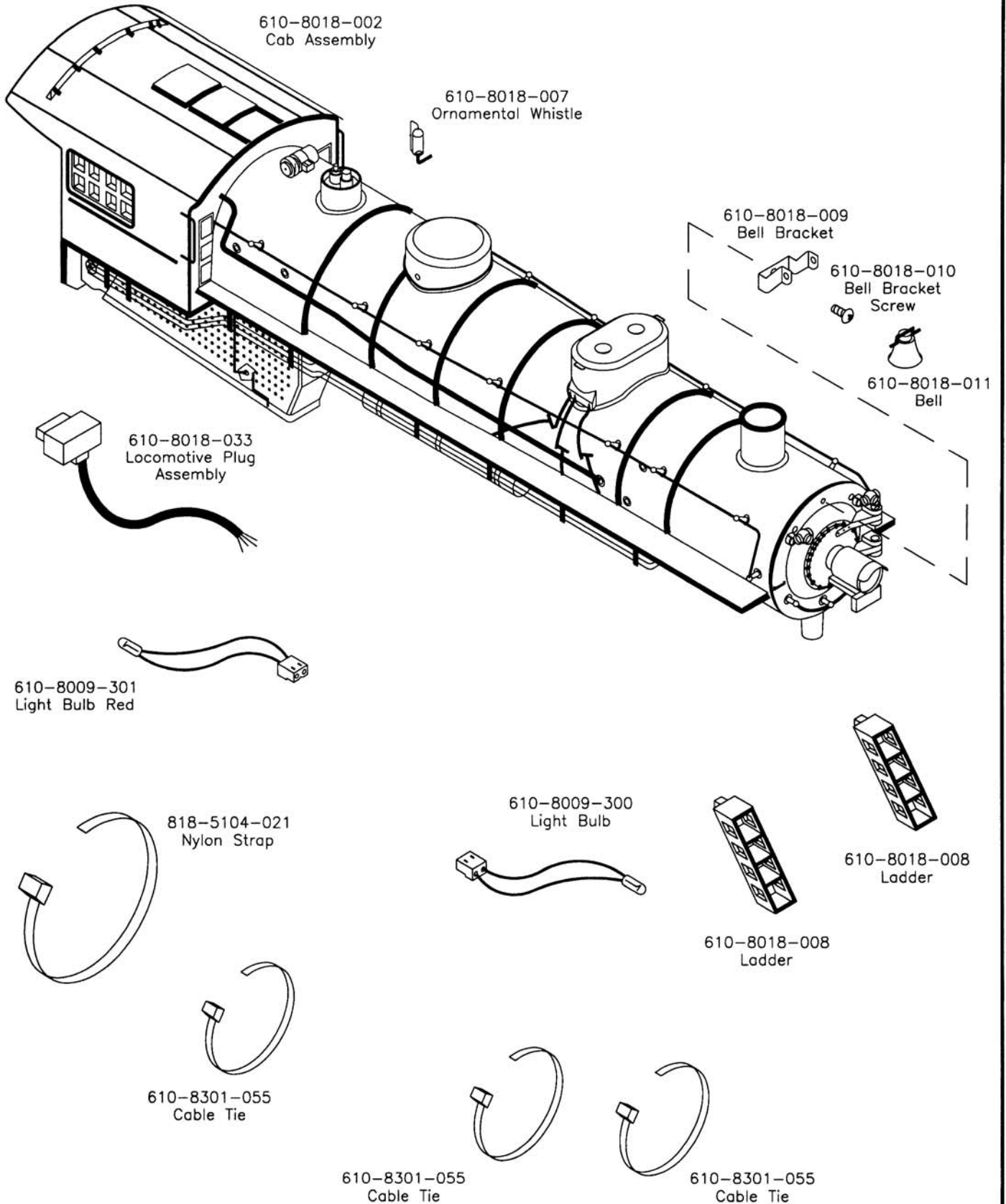


44-TON DIESEL SWITCHER 1-8905 Pennsylvania

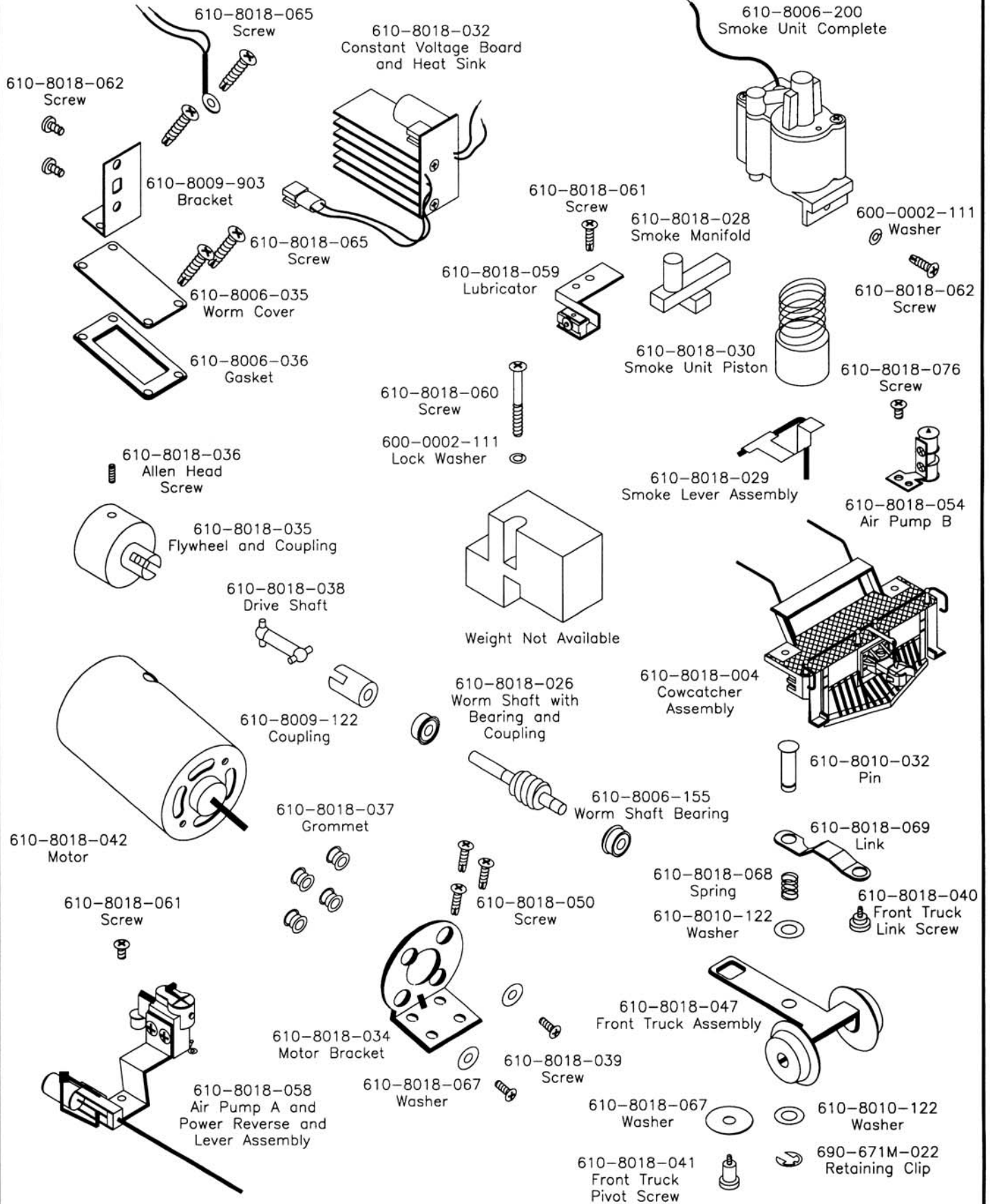
(Page 3 of 3)



2-8-2 MIKADO STEAM LOCOMOTIVE 1-8018 Southern

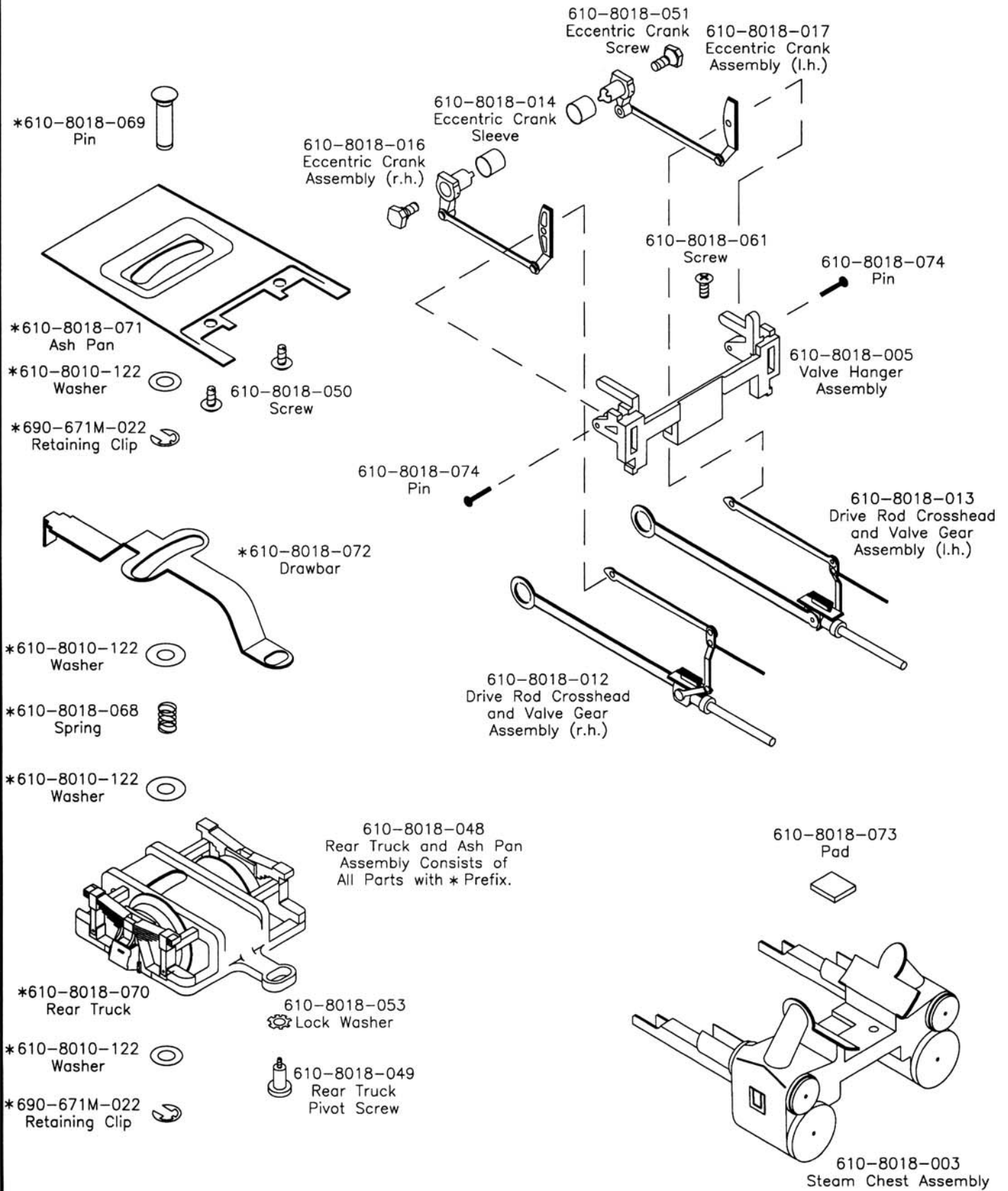


2-8-2 MIKADO STEAM LOCOMOTIVE 1-8018 Southern

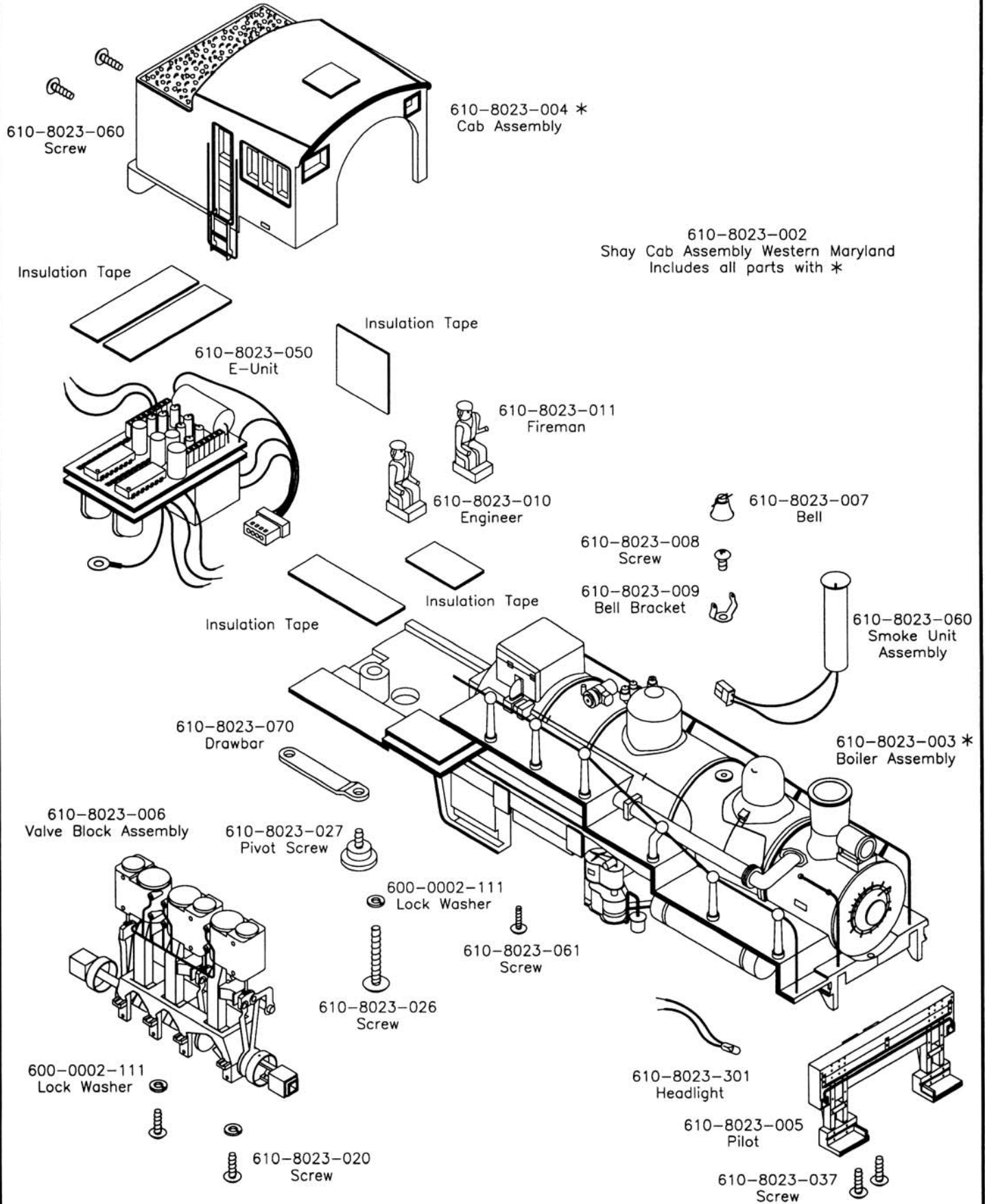


2-8-2 MIKADO STEAM LOCOMOTIVE 1-8018 Southern

(Page 3 of 4)

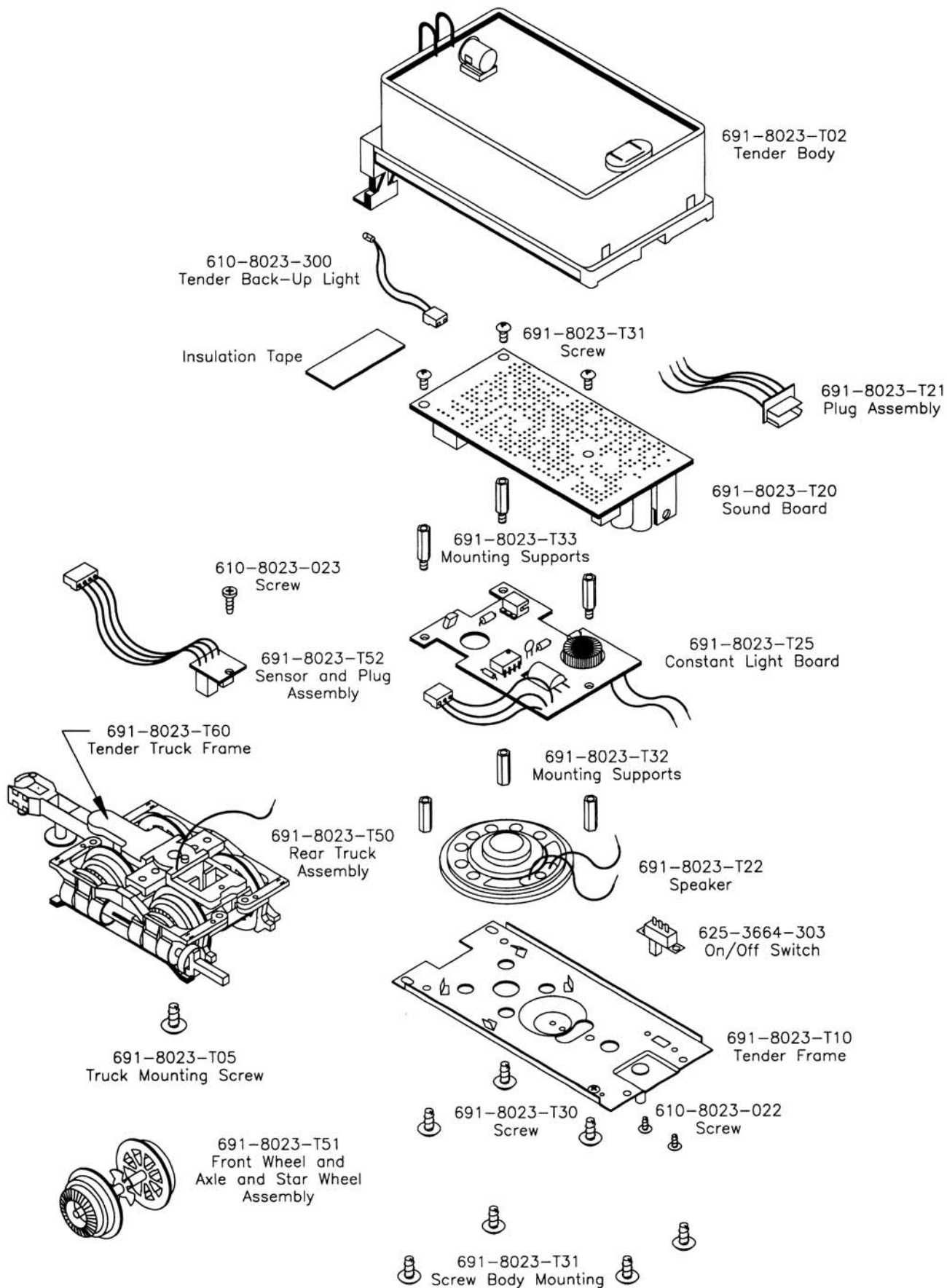


SHAY STEAM LOCOMOTIVE 1-8023 Western Maryland



SHAY STEAM LOCOMOTIVE TENDER

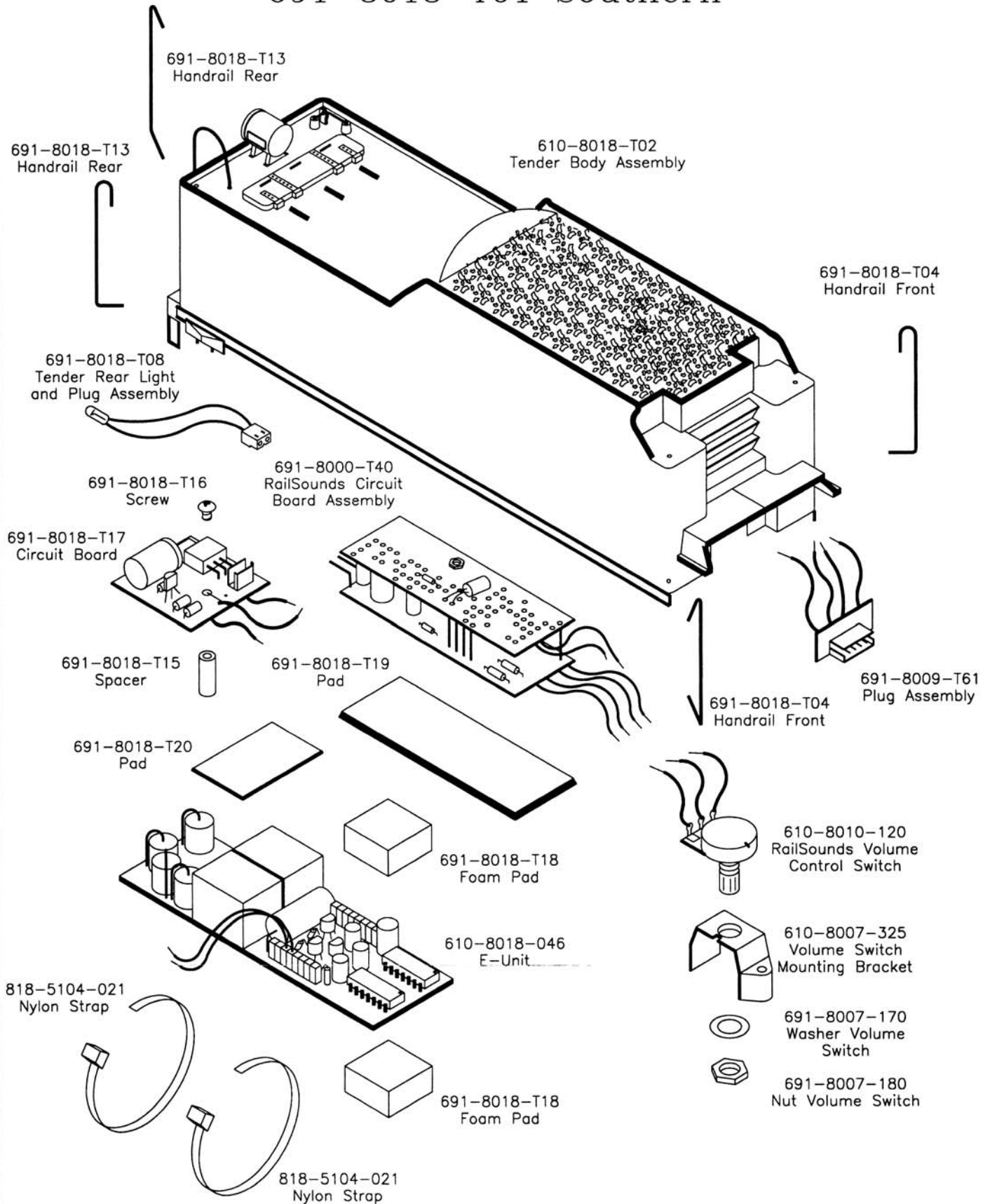
691-8023-T01 Western Maryland



TENDER

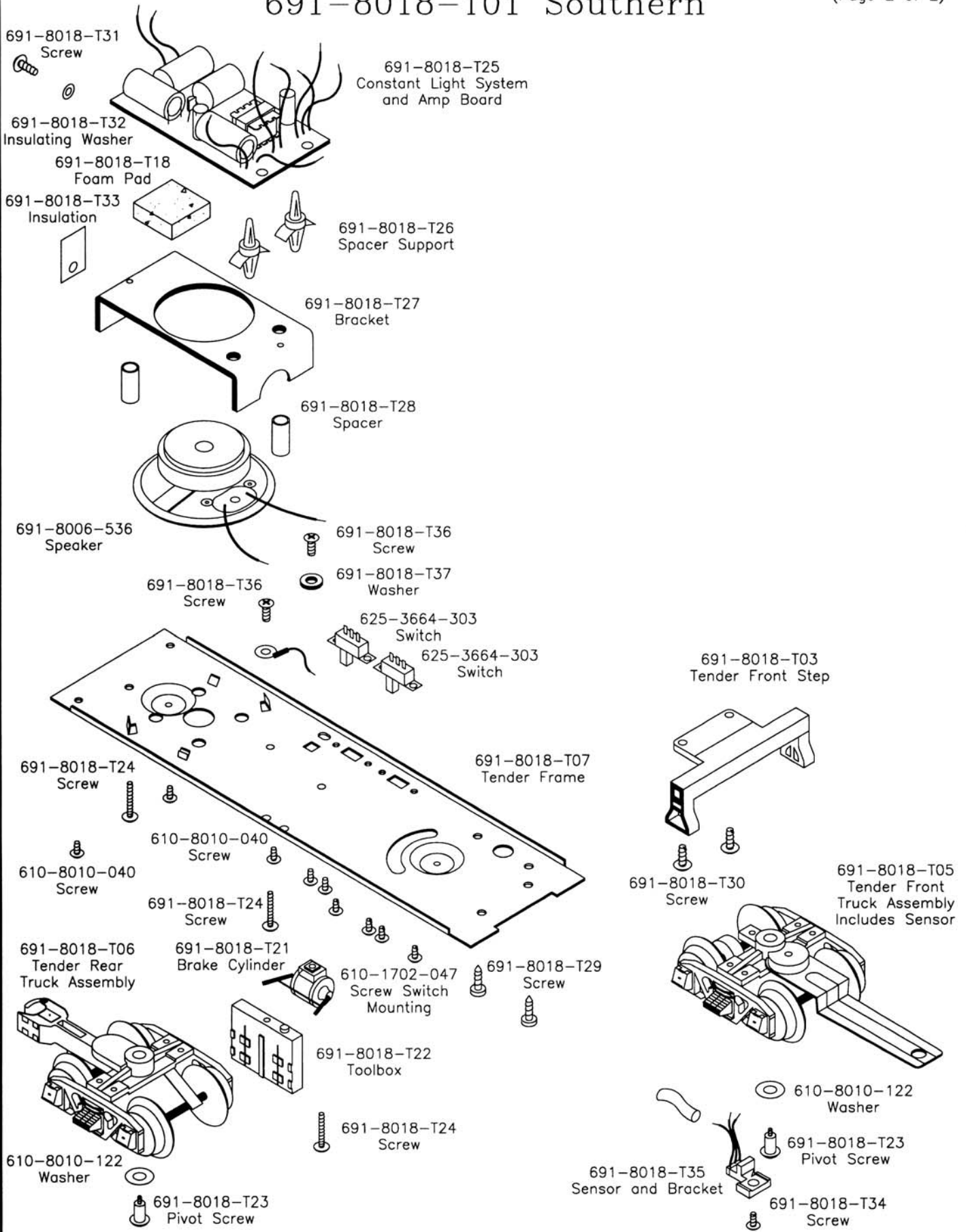
691-8018-T01 Southern

(Page 1 of 2)

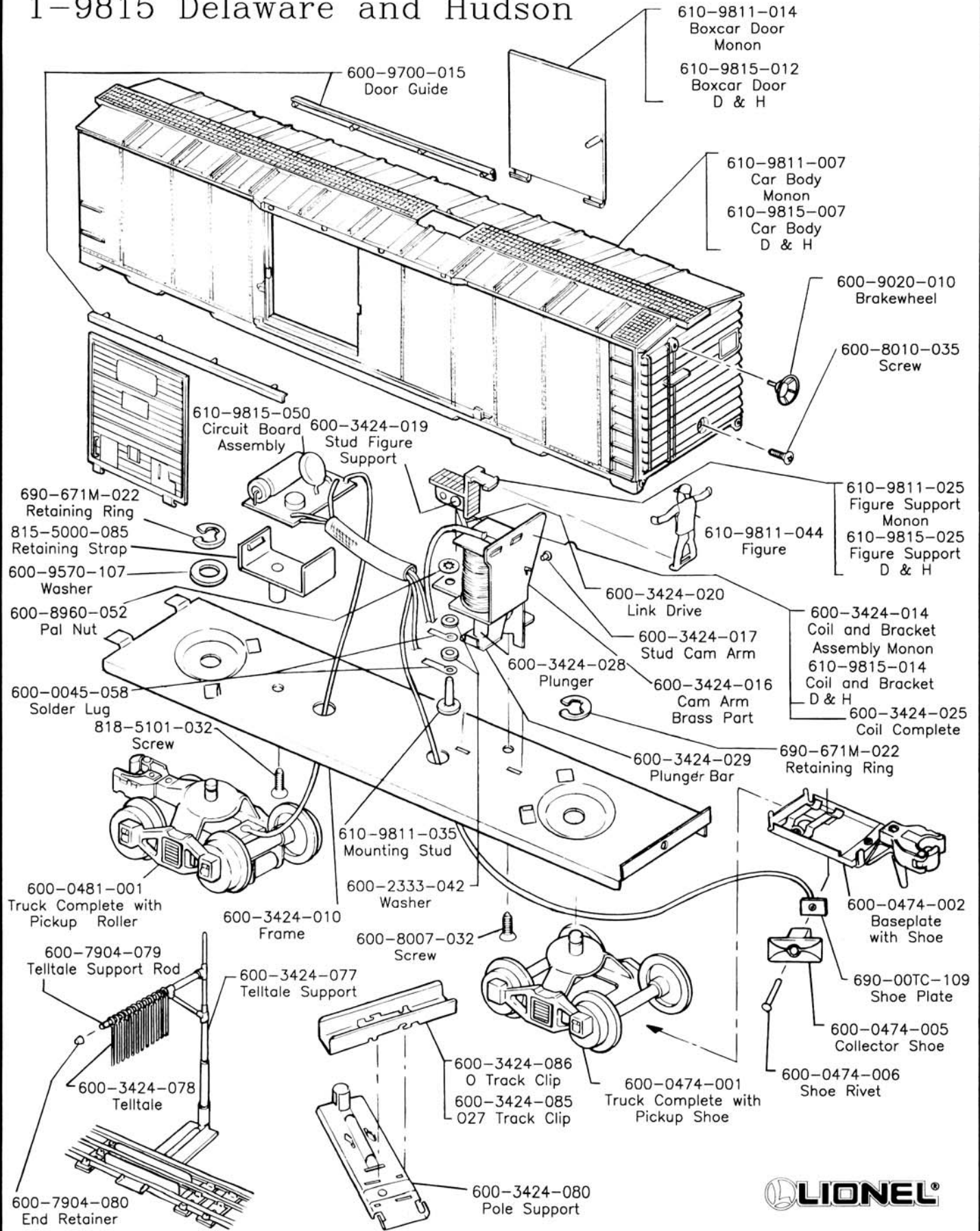


TENDER

691-8018-T01 Southern



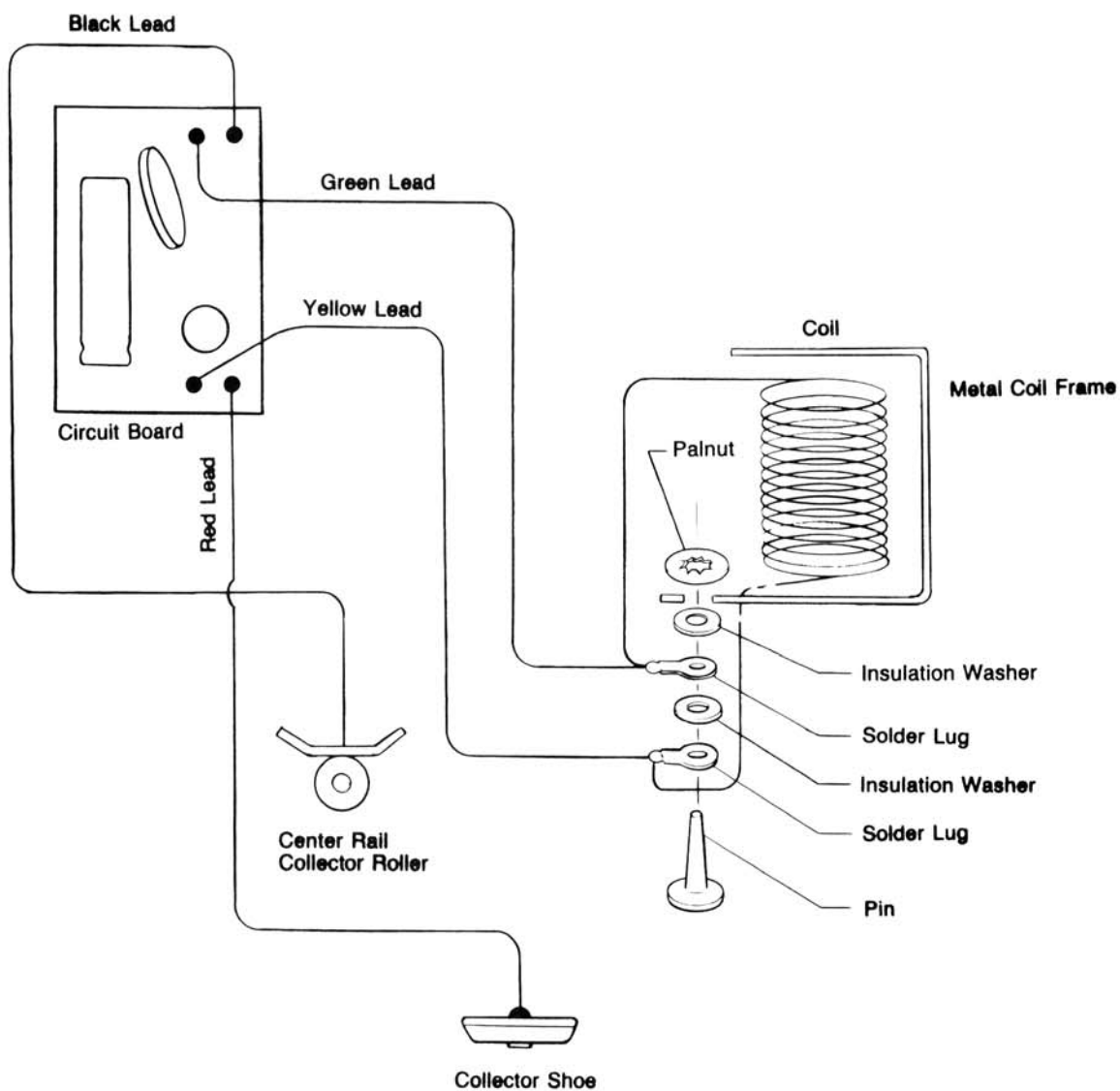
1-9811 Monon BRAKEMAN CAR 1-9815 Delaware and Hudson



1-9811 MONON BRAKEMAN CAR

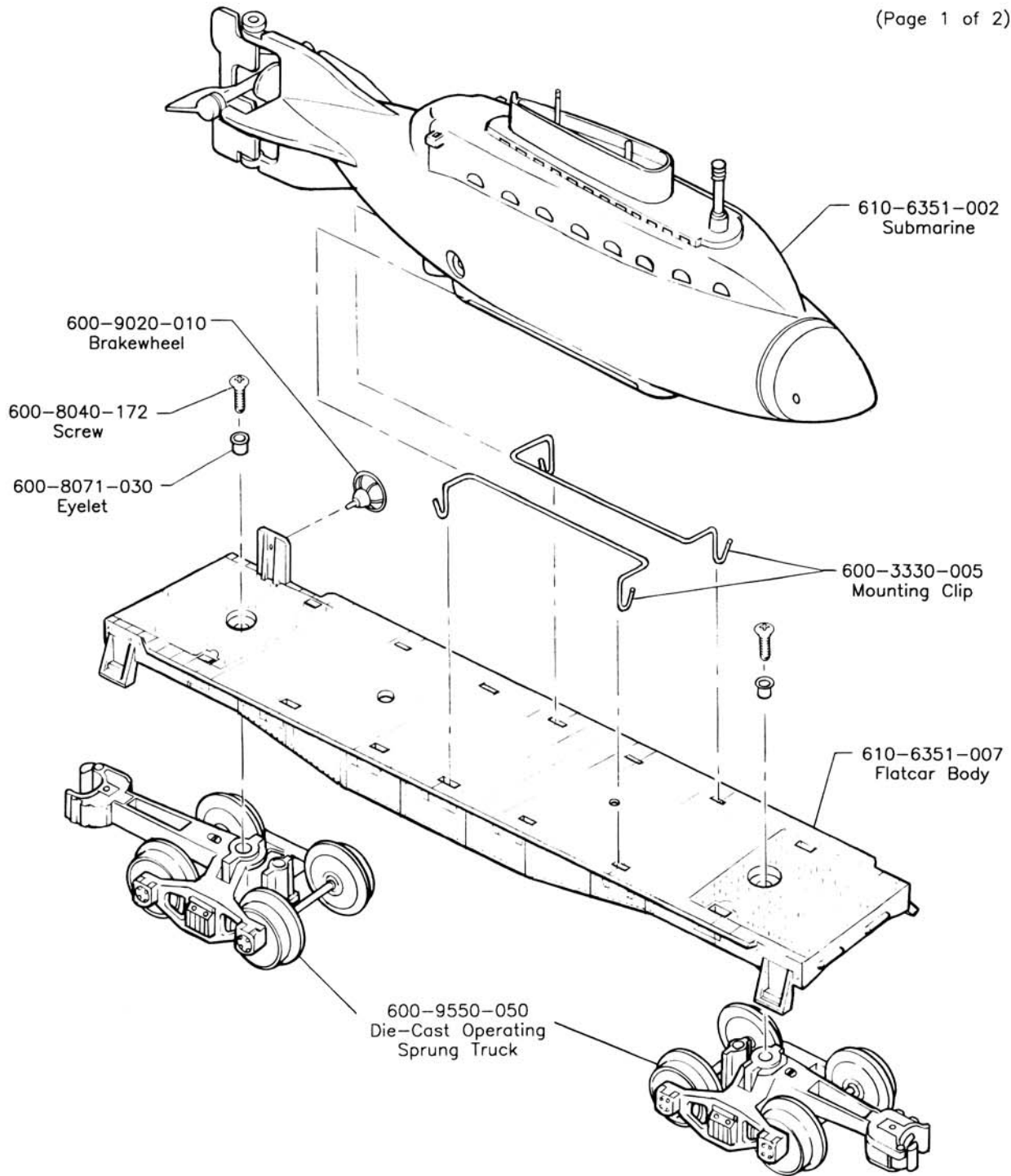
1-9815 D&H BRAKEMAN CAR

WIRING SCHEMATIC



1-6351 FLATCAR WITH SUBMARINE

(Page 1 of 2)

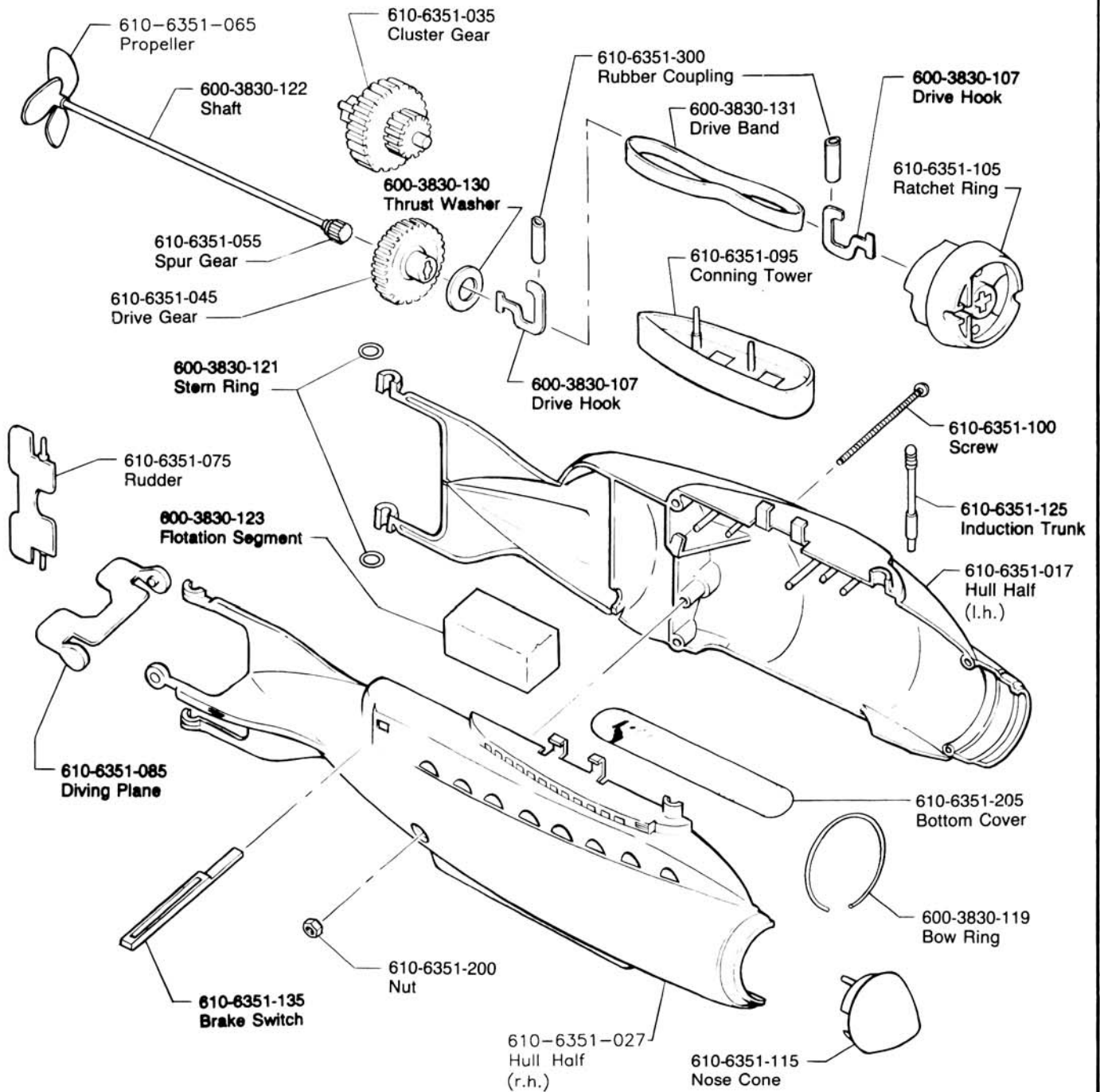


 **LIONEL®**

SUBMARINE COMPLETE

610-6351-002 U.S. Navy

(Page 2 of 2)

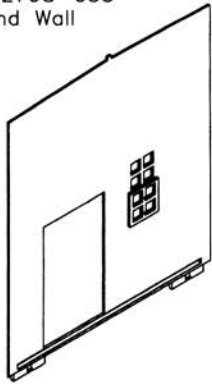


 **LIONEL**

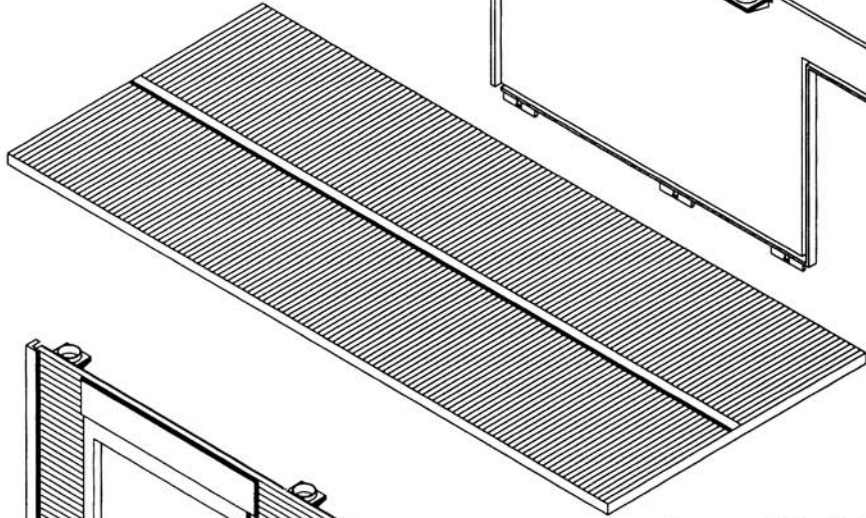
1-2798 FORKLIFT LOADER

(Page 1 of 2)

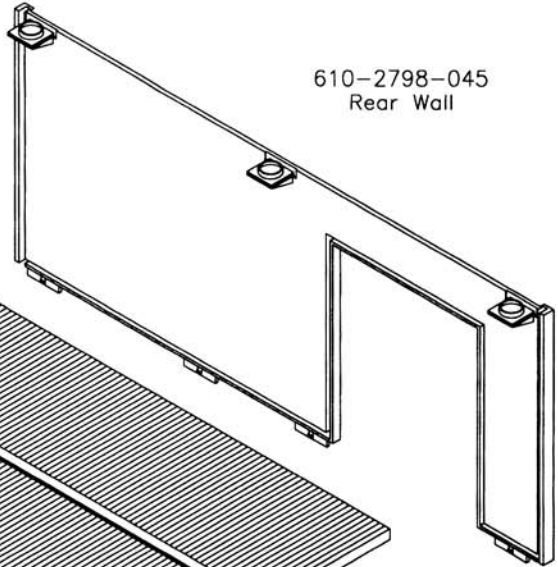
610-2798-055
End Wall



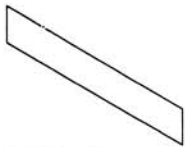
610-2798-005
Roof



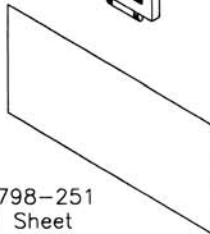
610-2798-045
Rear Wall



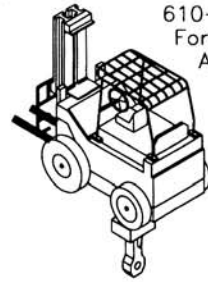
610-2798-251
Decal Sheet
with Plates



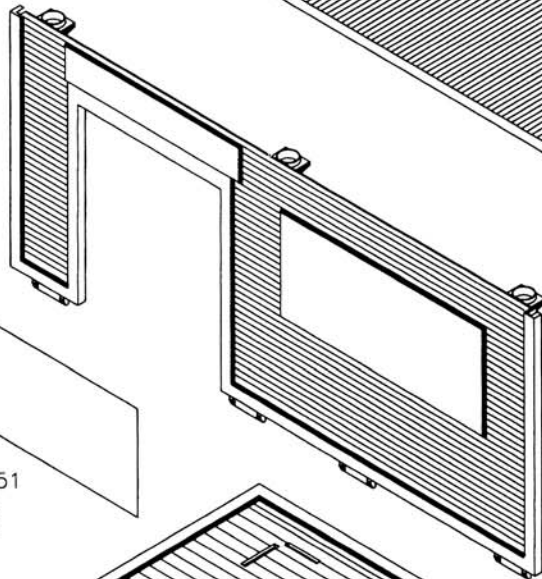
610-2798-251
Decal Sheet
with Plates



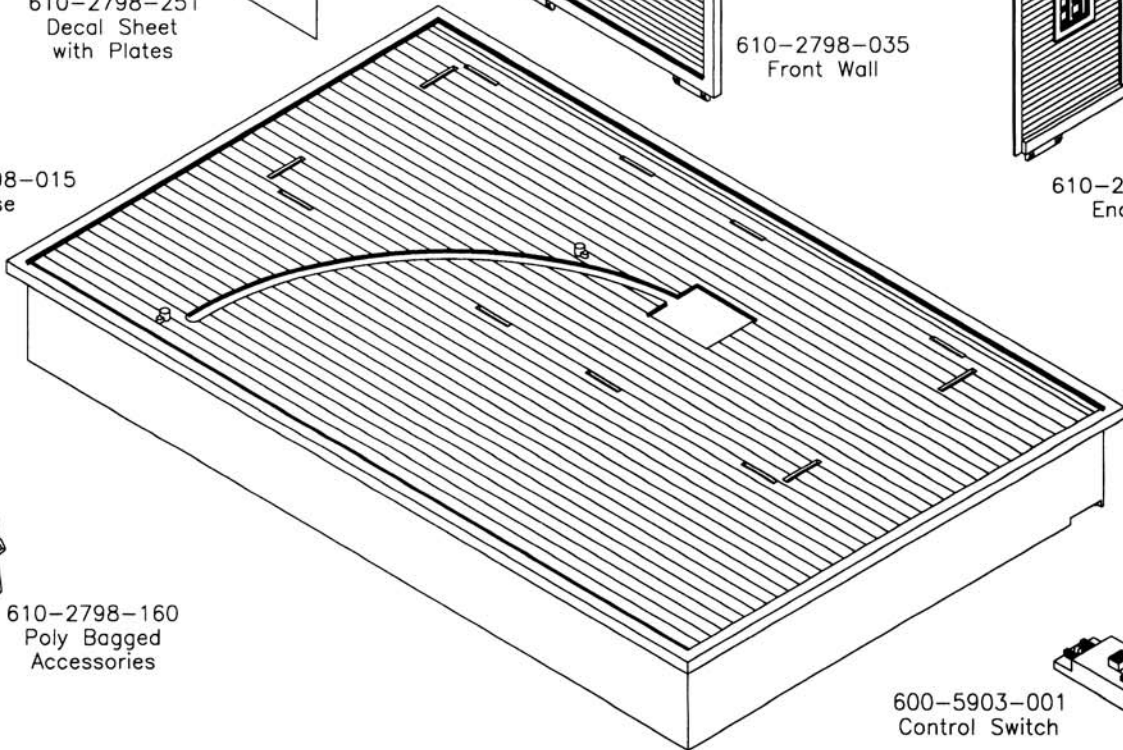
610-2798-001
Forklift Truck
Assembly



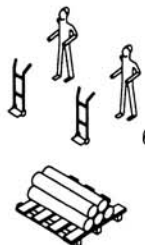
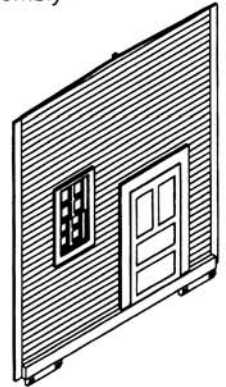
610-2798-035
Front Wall



610-2798-015
Base

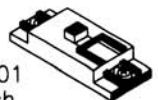


610-2798-055
End Wall



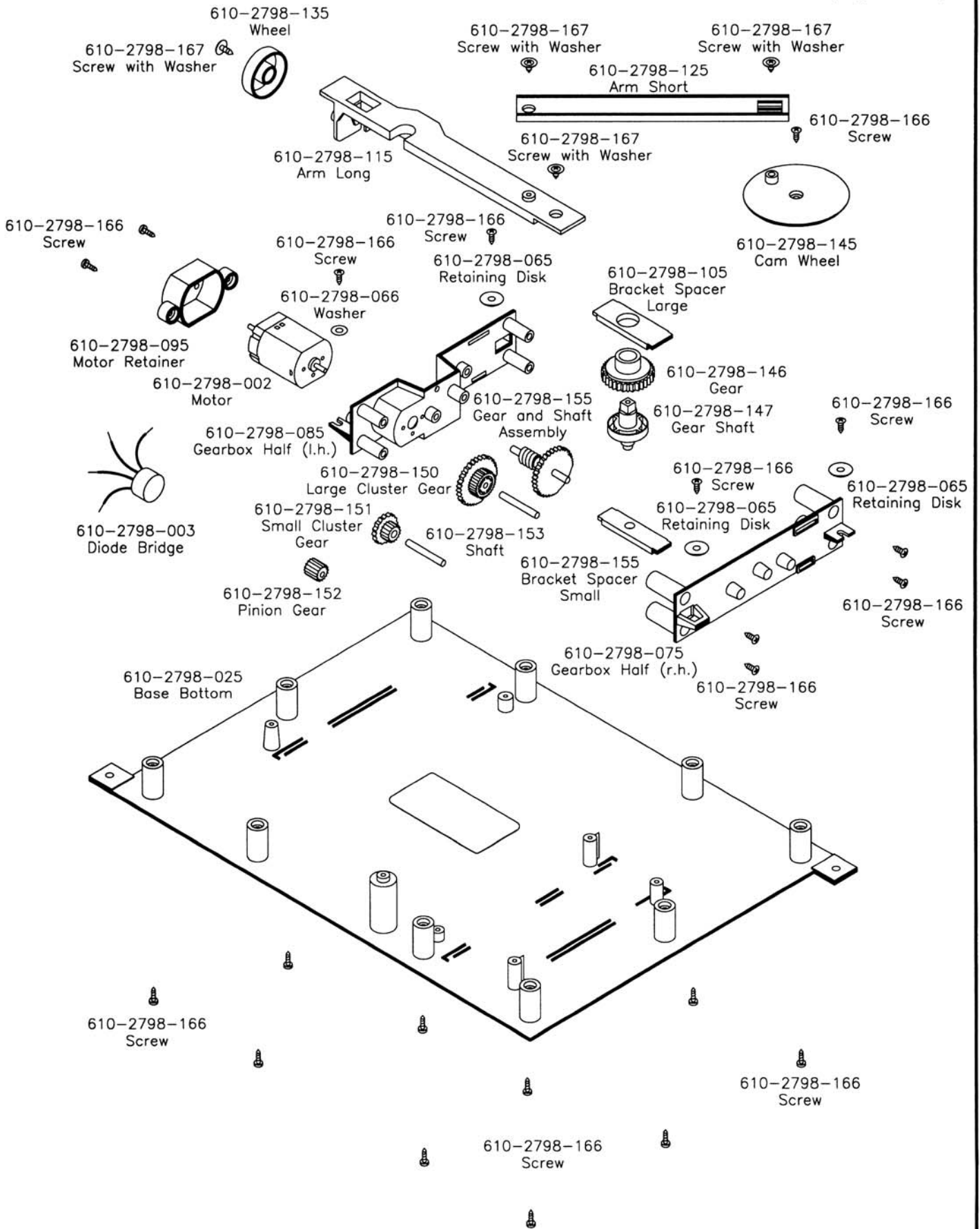
610-2798-160
Poly Bagged
Accessories

600-5903-001
Control Switch



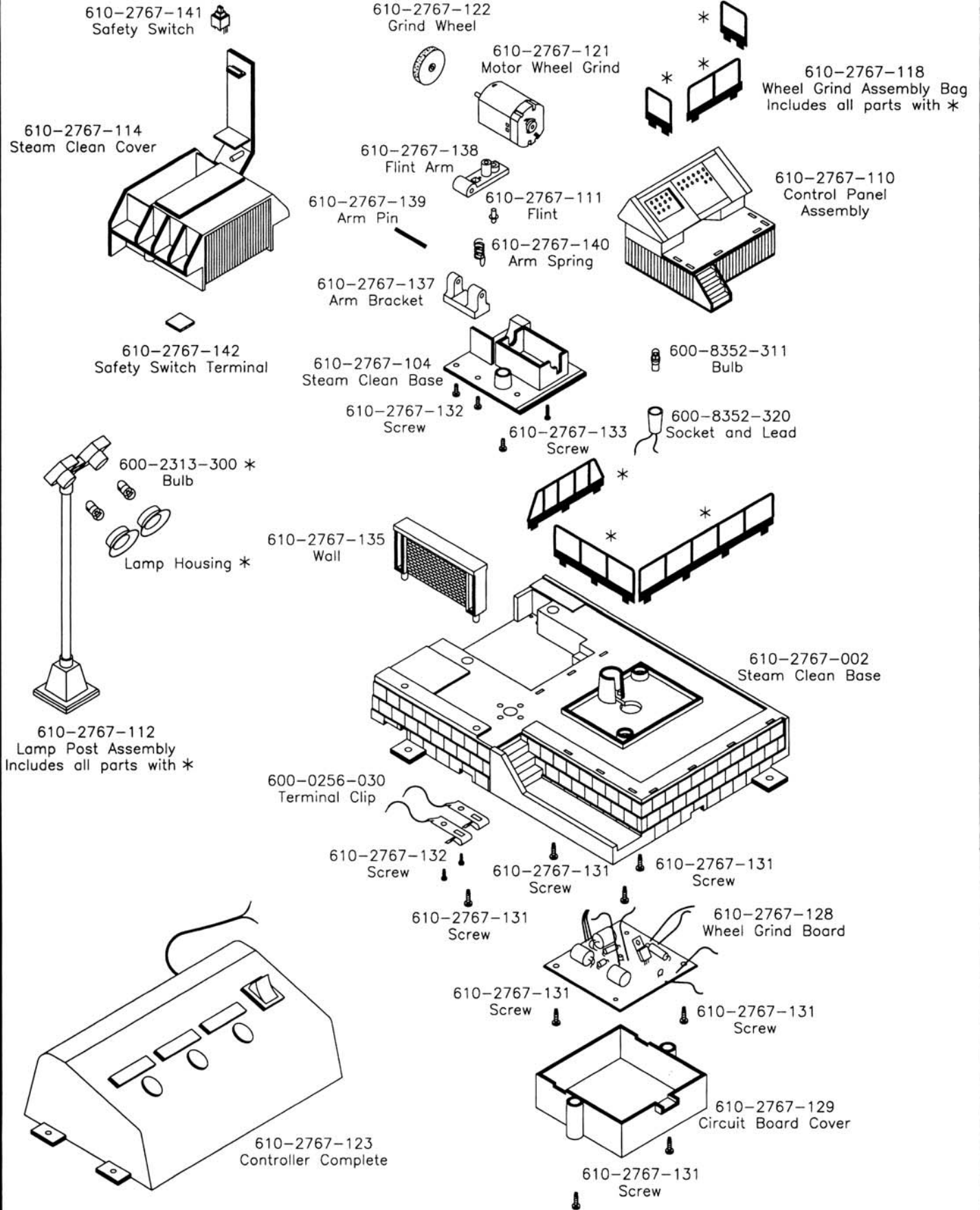
1-2798 FORKLIFT LOADER

(Page 2 of 2)

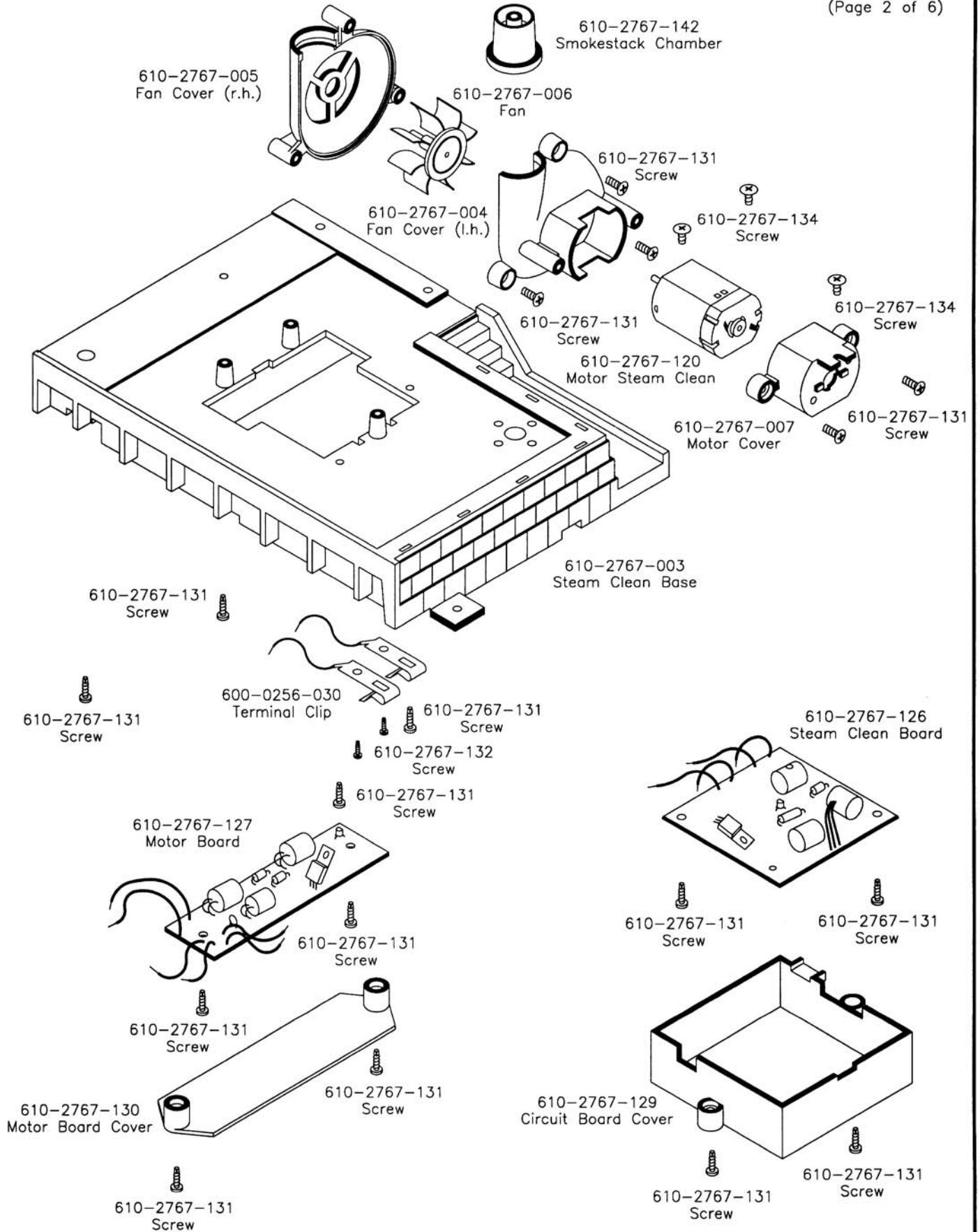


1-2767 STEAM CLEAN AND WHEEL GRIND SHOP

(Page 1 of 6)



1-2767 STEAM CLEAN AND WHEEL GRIND SHOP

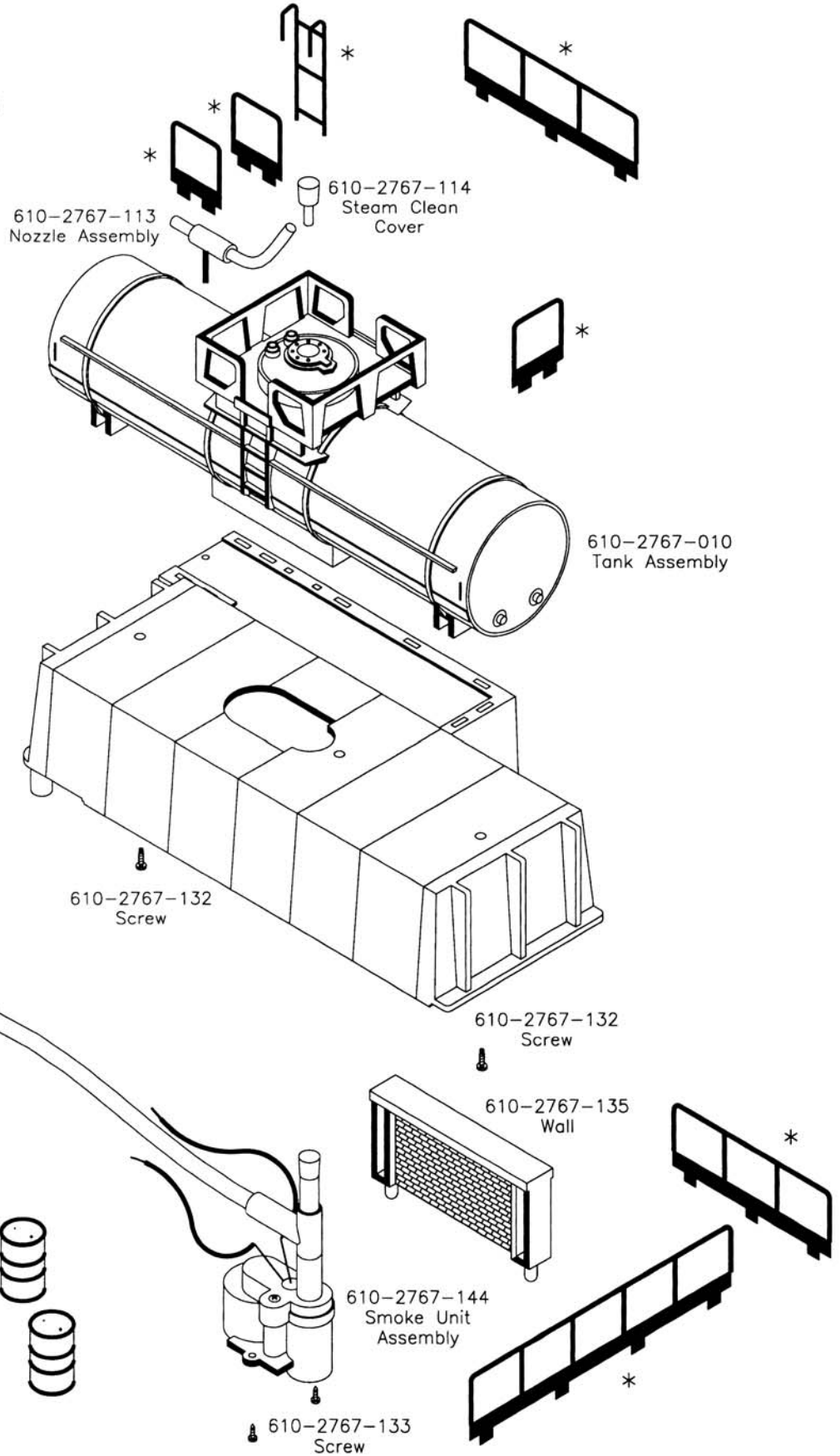


1-2767 STEAM CLEAN AND WHEEL GRIND SHOP

(Page 3 of 6)

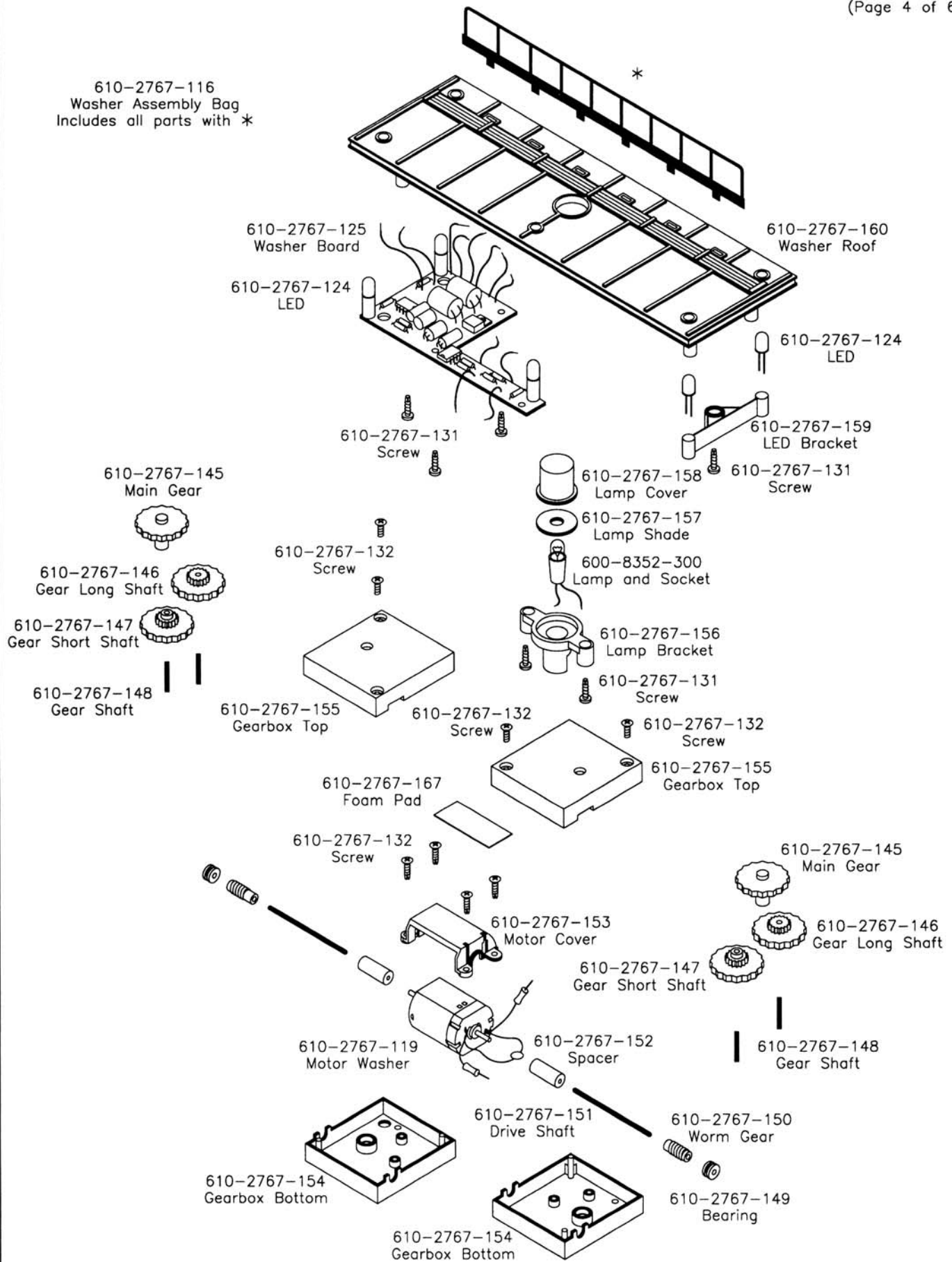
610-2767-117
Steam Clean Assembly Bag
Includes all items with *

610-2767-008
Tank Base

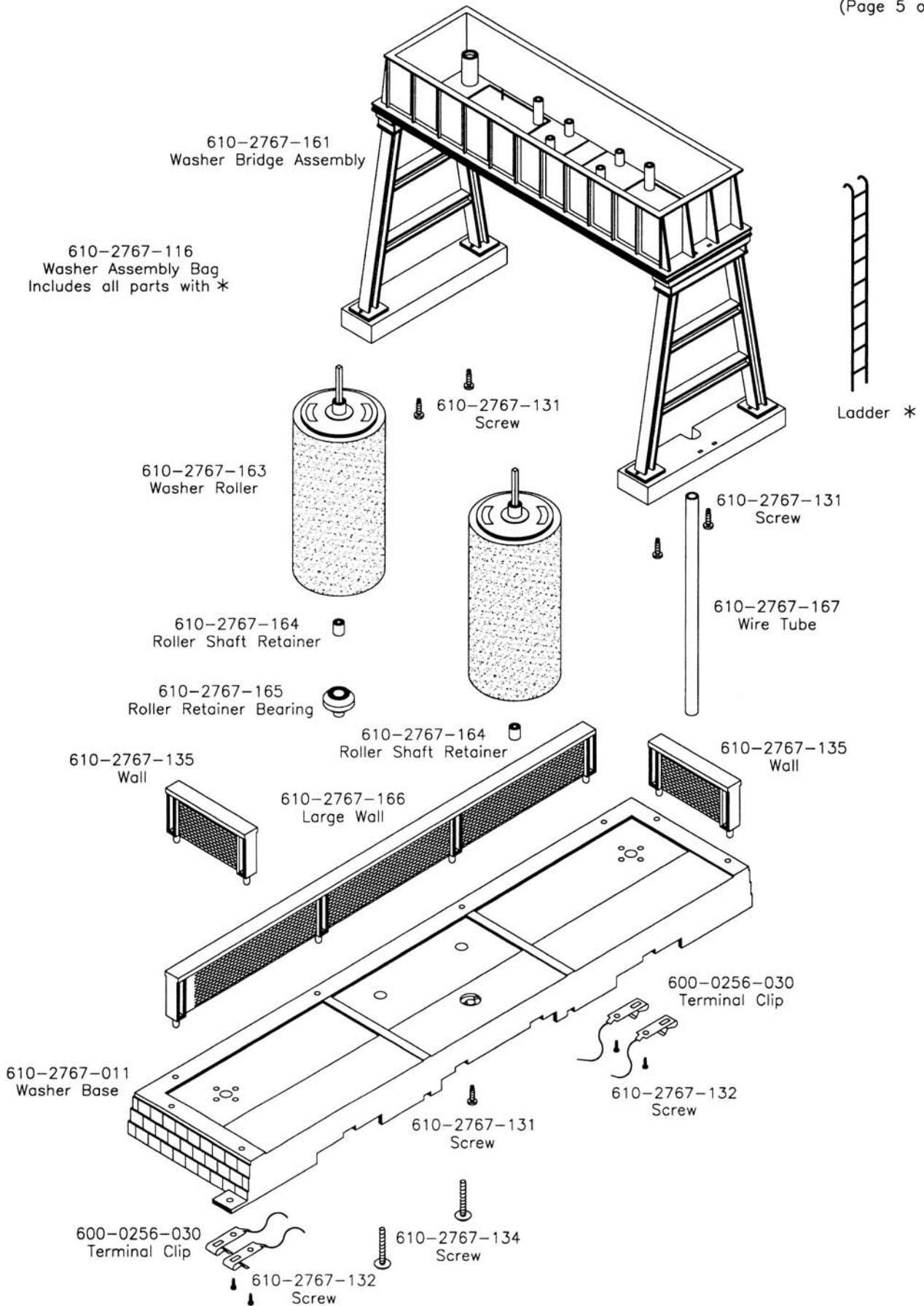


6-12767 STEAM CLEAN AND WHEEL GRIND SHOP

610-2767-116
Washer Assembly Bag
Includes all parts with *



1-2767 STEAM CLEAN AND WHEEL GRIND SHOP



1-2767 STEAM CLEAN AND WHEEL GRIND SHOP

