



HO Scale Kit TRANSFORMER 933-3126

READ INSTRUCTIONS FIRST

Thanks for purchasing this Cornerstone® kit. All parts are made of styrene plastic so please use paints and glues which are compatible.

Transformers are an essential part of the electrical distribution network and can be found world-wide. In principle, they work much like your layout power pack, by reducing the high voltages needed to transmit electricity over long distances. Once reduced, the power can be routed through distribution lines to homes and industrial customers. Step-up transformers look much the same, but are used to increase voltages and are usually found at power plants.

Most transformers are custom-built to meet the needs of a specific customer, but every one of them is big and heavy. Most exceed highway and bridge weight restrictions, so they are transported by rail, often directly to the site where they will be installed. Before shipping, clearances for maximum height and width along the line must be determined. In many areas, especially the eastern US, tight clearances require the use of a depressed center flat car. To make it easier to ship, the transformer's input and output bushings (where power lines are connected) and radiators may be removed, crated and shipped separately aboard a flat car. Insulating fluid for the radiators may also be shipped in 55 gallon drums as part of this load. This car will then accompany the depressed center flat to the unloading site.

ON YOUR LAYOUT

When fully assembled, this transformer can be used to enlarge the Northern Light & Power Substation (933-3025), or the Northern Light & Power Powerhouse (933-3021). Many large industries also require their own transformers, so it can also be used to detail an industrial area. The area should be fenced off with a Chain-Link Fence (933-3125) for safety.

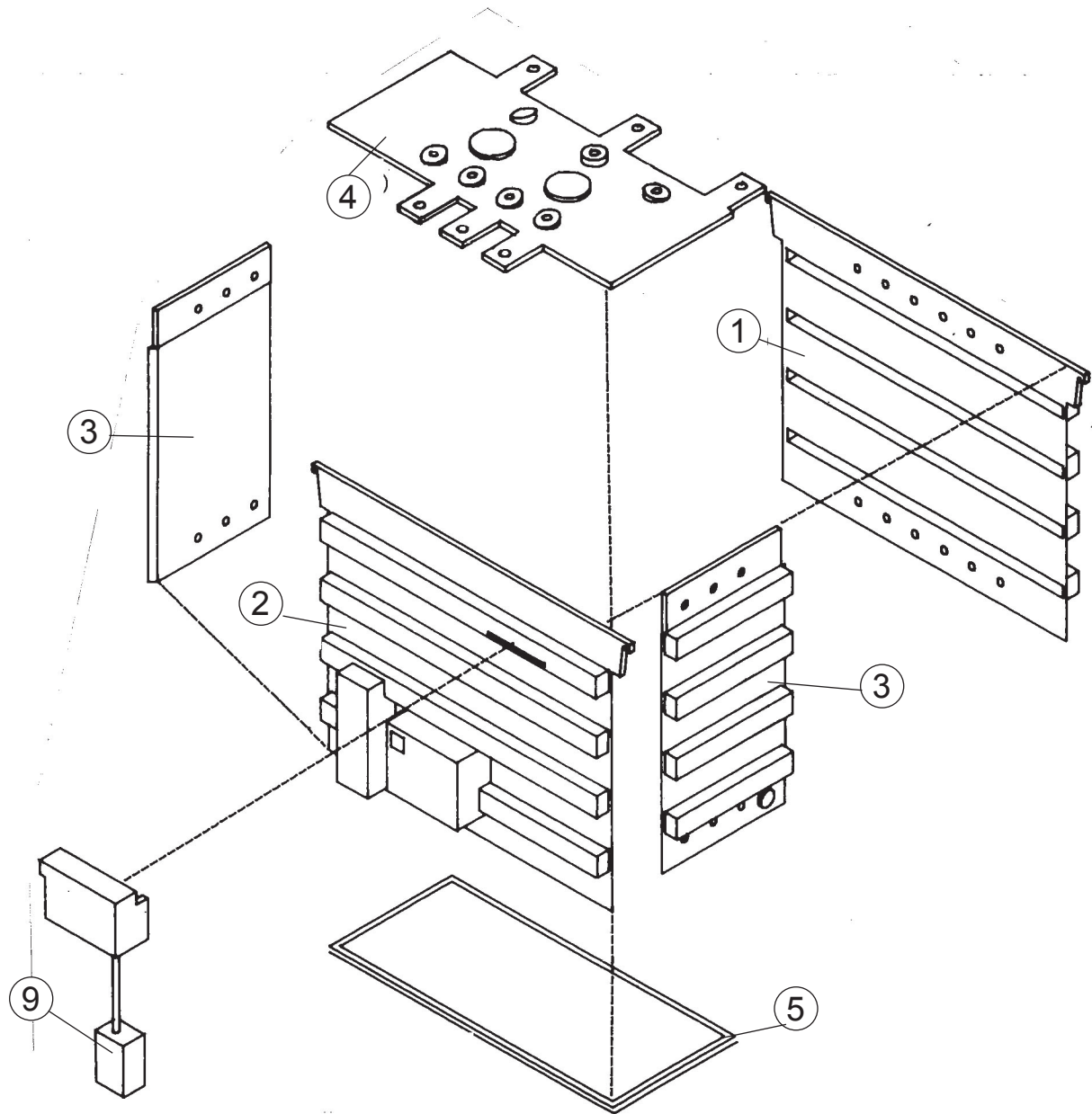
By leaving off some of the parts, as outlined in the instructions, it can also be used as a load for the Four-Truck, Depressed Center Flat Cars (932-5630 series). The radiators and bushings can be used to make a detailed load for a General Steel "Commonwealth" Flat Car (932-3750 series) and the insulating fluid can be shipped in 55 Gallon Drums (933-3100) available separately from your Dealer.

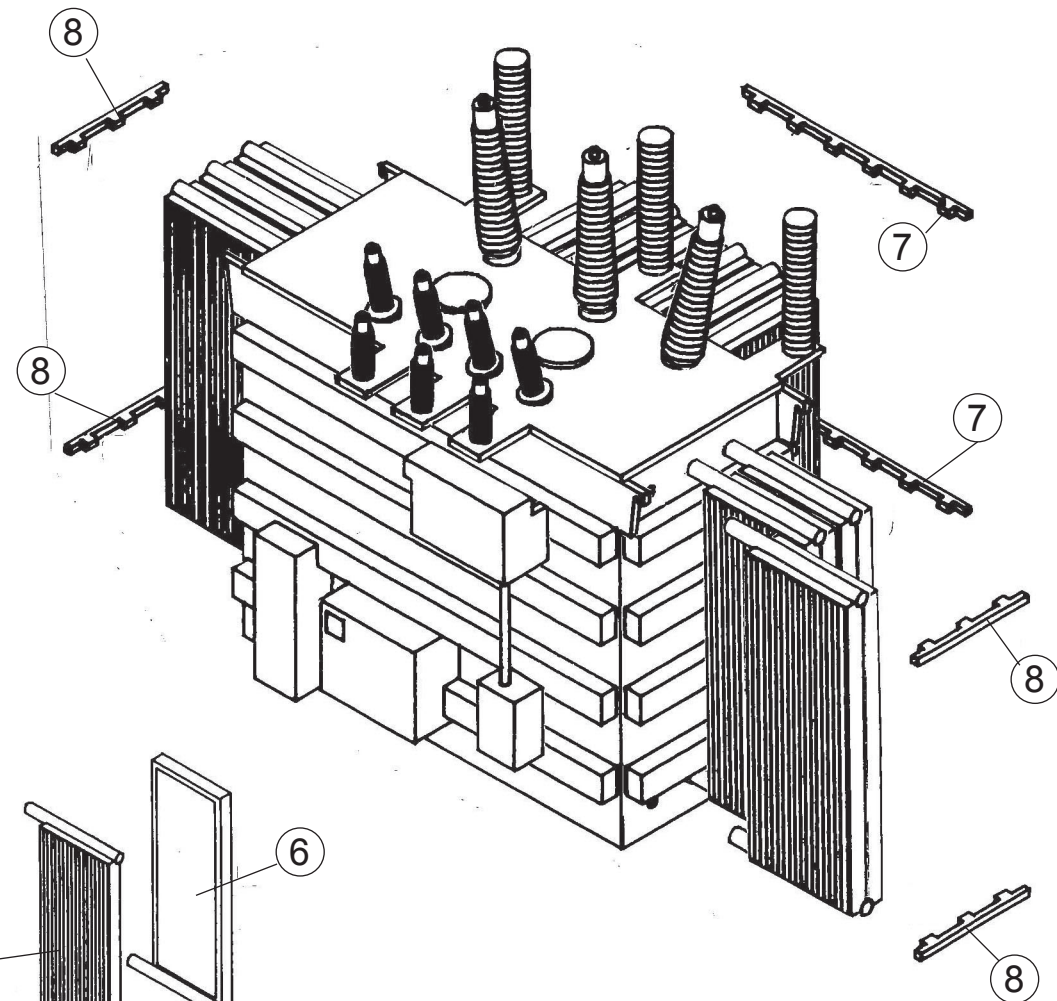
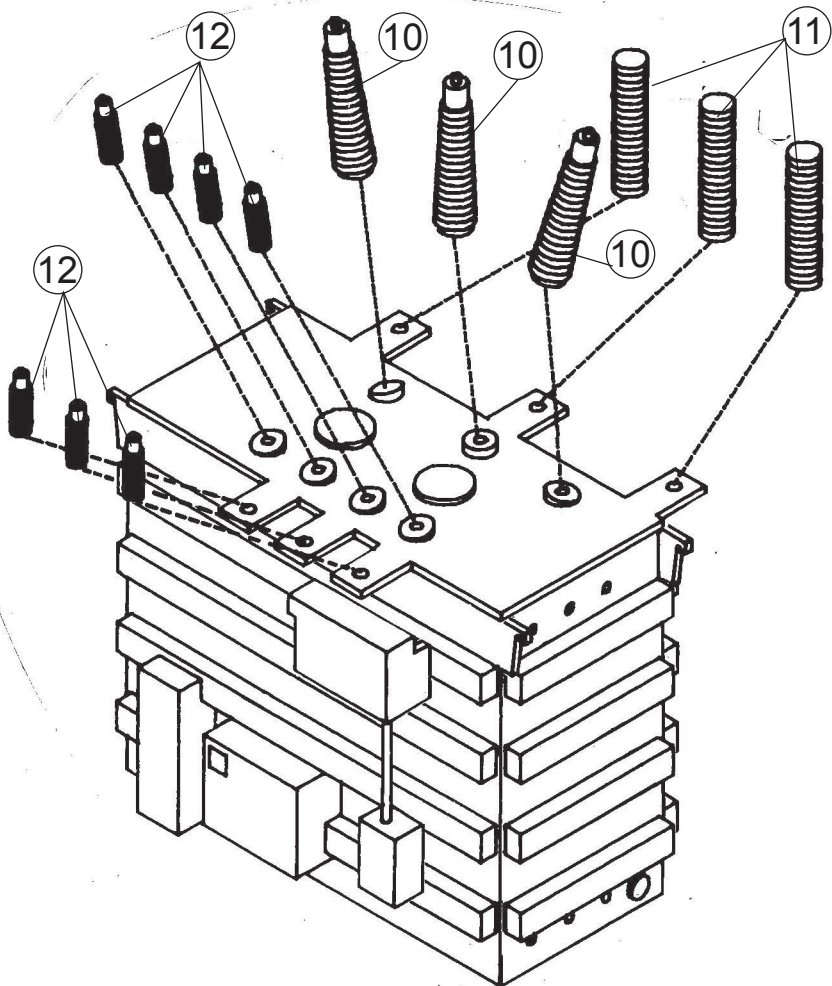
ASSEMBLY

Assemble the main transformer body as shown using back wall (1), front wall (2), side walls (3), base (5) and top (4). Attach equipment case (9) to the proper location on the front wall.

Determine whether the transformer is ready for shipment or in use. If in use, add input bushings (10, 11) and the output bushings (12). Attach radiators (6) and support brackets (7, 8).

If transformer is for shipment, determine which parts are to be left off and shipped separately.





DECALING

1. After cutting out the decal, dip in water for 10 seconds, remove and let stand for 1 minute. Slide decal onto surface, position and then blot off any excess water.
2. Lightly brush Micro Sol® on top. This will soften the decal allowing it to conform to irregular surfaces. **DO NOT TOUCH DECAL** while wet!
3. When the decal is thoroughly dry, check for any trapped air bubbles. Prick them with the point of a small pin or hobby knife blade and apply more Micro Sol®.

