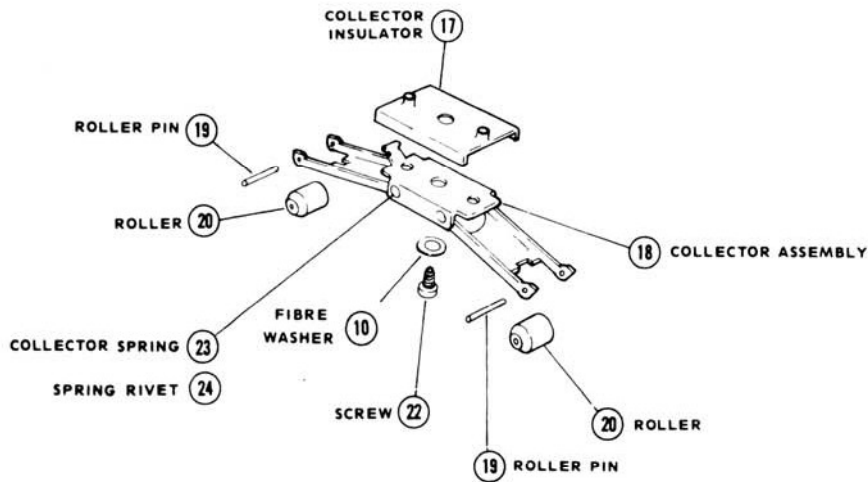
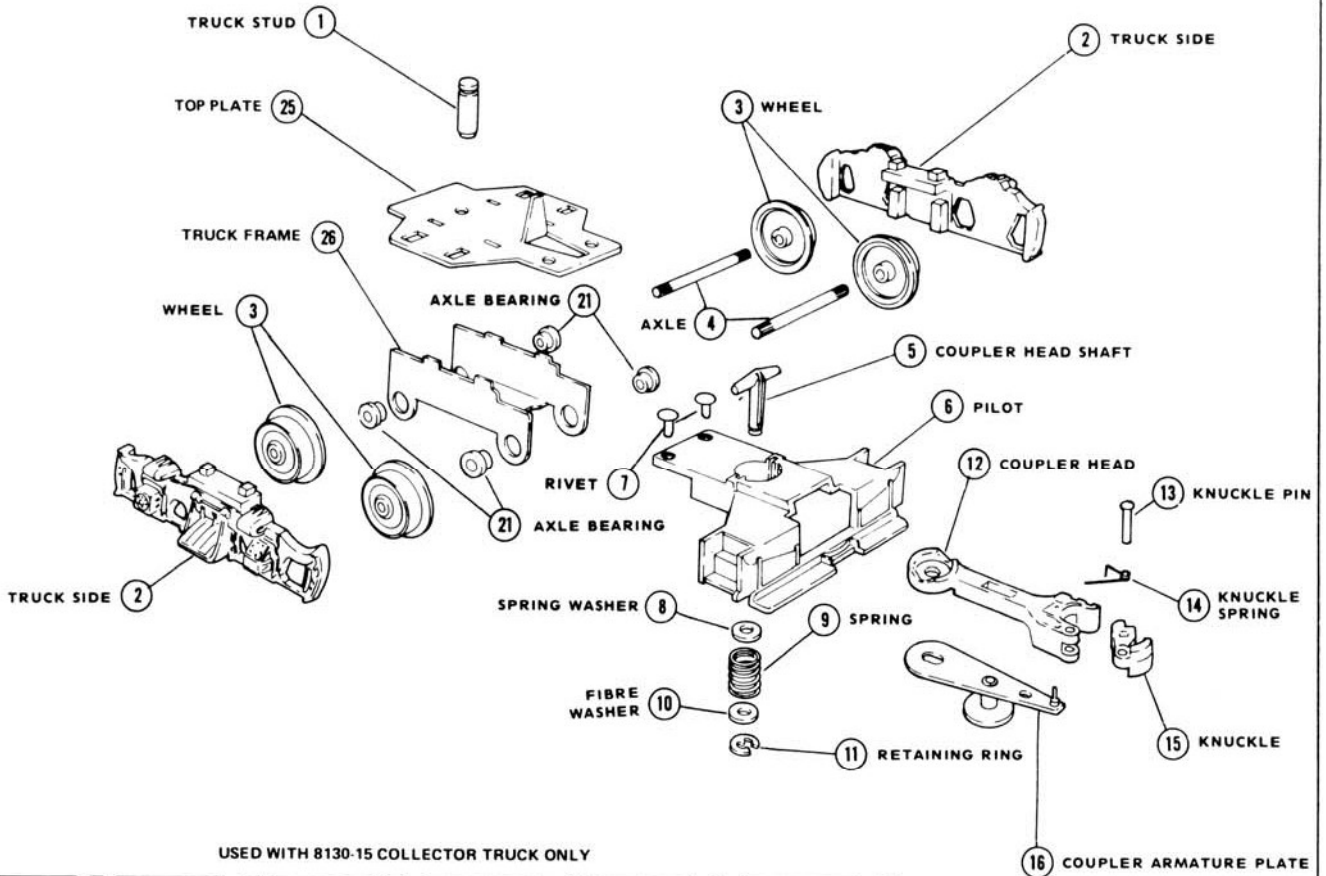


8030-15 PLAIN TRUCK 8130-15 COLLECTOR TRUCK



LIONEL

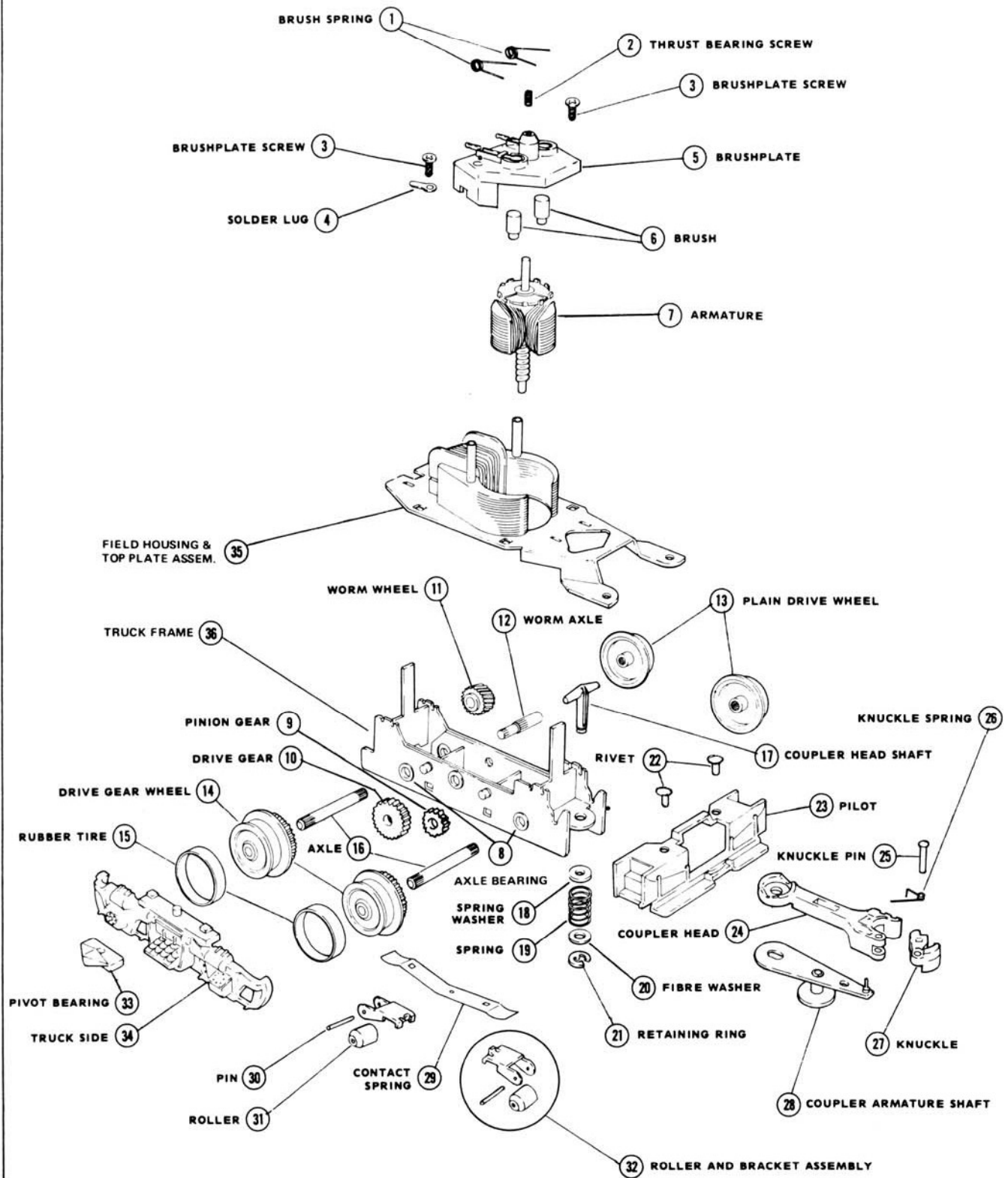
8030-15 PLAIN TRUCK W /BLACK SIDES
 8665-15 PLAIN TRUCK W /SILVER SIDES
 8130-15 COLLECTOR TRUCK

SECTION MOTORS/TRUCKS
 DATE 2-78
 REFERENCE DRAWINGS

(U36B & GP- PLAIN) (BUDD & RECTIFIER - COLLECTOR)

REF. NO.	PART NUMBER	QUANTITY PER UNIT	DESCRIPTION
1	8030-22	1	Truck Stud
2	2328-88	2	Truck Side (Black)
2	2328-89	2	Truck Side (Silver)
3	8010-122	4	Plain Wheel
4	671-25	2	Axle
5	2321-164	1	Coupler Head Shaft
6	8030-76	1	Pilot
7	530-40	2	Rivet (Pilot Mtg.)
8	671M-23	1	Spring Washer
9	1615-93	1	Spring
10	8250-35	1	Fibre Washer (Coupler & Collector)
11	671M-22	1	Retaining Ring
12	600-132	1	Coupler Head
13	TC-23	1	Knuckle Pin
14	480-16	1	Knuckle Spring
15	480-8	1	Knuckle
16	2321-156	1	Coupler Armature
17	2328-170	1	Collector Insulator (8130-15)
18	2328-171	1	Collector Assem. (8130-15)
19	2328-96	2	Collector Roller Pin (8130-15)
20	2328-95	2	Collector Roller (8130-15)
21	8010-118	4	Axle Bearing
22	8010-165	1	Screw (Collector Mtg. - 8130-15)
23	2321-135	2	Collector Spring (8130-15)
24	2367-198	2	Spring Rivet (Collector - 8130-15)
25		1	Top Plate & Truck Frame Assm.

8030-100, 8665-100 MOTOR TRUCK



LIONEL

GP7 - GP9 - GP20 & U36B MOTOR TRUCK
 (8030-100) (8665-100)

SECTION MOTORS/TRUCKS

DATE 2-78

REFERENCE
DRAWINGS

REF. NO.	PART NUMBER	QUANTITY PER UNIT	DESCRIPTION
1	622-191	2	Brush Spring
2	8030-118	1	Thrust Bearing Screw
3	8010-165	2	Screw (Brushplate Mtg.)
4	82-43	1	Solder Lug
5	8010-139	1	Brushplate
6	8040-150	2	Brush
7	8010-125	1	Armature
8	8010-118	4	Axle Bearing
9	8010-117	2	Pinion Gear (1 Shown)
10	8010-116	1	Drive Gear
11	8010-115	1	Worm Wheel (Plastic)
12	8010-190	1	Worm Axle
13	8010-122	2	Plain Wheel
14	8010-123	2	Gear Wheel
15	222-108	2	Rubber Tire
16	671-25	2	Axle
17	600-138	1	Coupler Head Shaft
18	671M-23	1	Spring Washer
19	1615-93	1	Spring
20	8250-35	1	Fibre Washer
21	671M-22	1	Retaining Ring
22	530-40	2	Rivet (Pilot Mtg.)
23	627-122	1	Pilot
24	600-139	1	Coupler Head
25	TC-23	1	Knuckle Pin
26	480-16	1	Knuckle Spring
27	480-8	1	Knuckle
28	2321-156	1	Coupler Armature
29	8209-120	1	Roller Contact Spring
30	2328-96	2	Collector Roller Pin
31	2328-95	2	Collector Roller
32	8209-165	2	Roller & Bracket Assem.
33	8010-105	2	Pivot Bearing
34	600-132	2	Truck Side (Black)
34	600-89	2	Truck Side (Silver)
35		1	Field Housing and Top Plate Assembly

Rev. 6/92