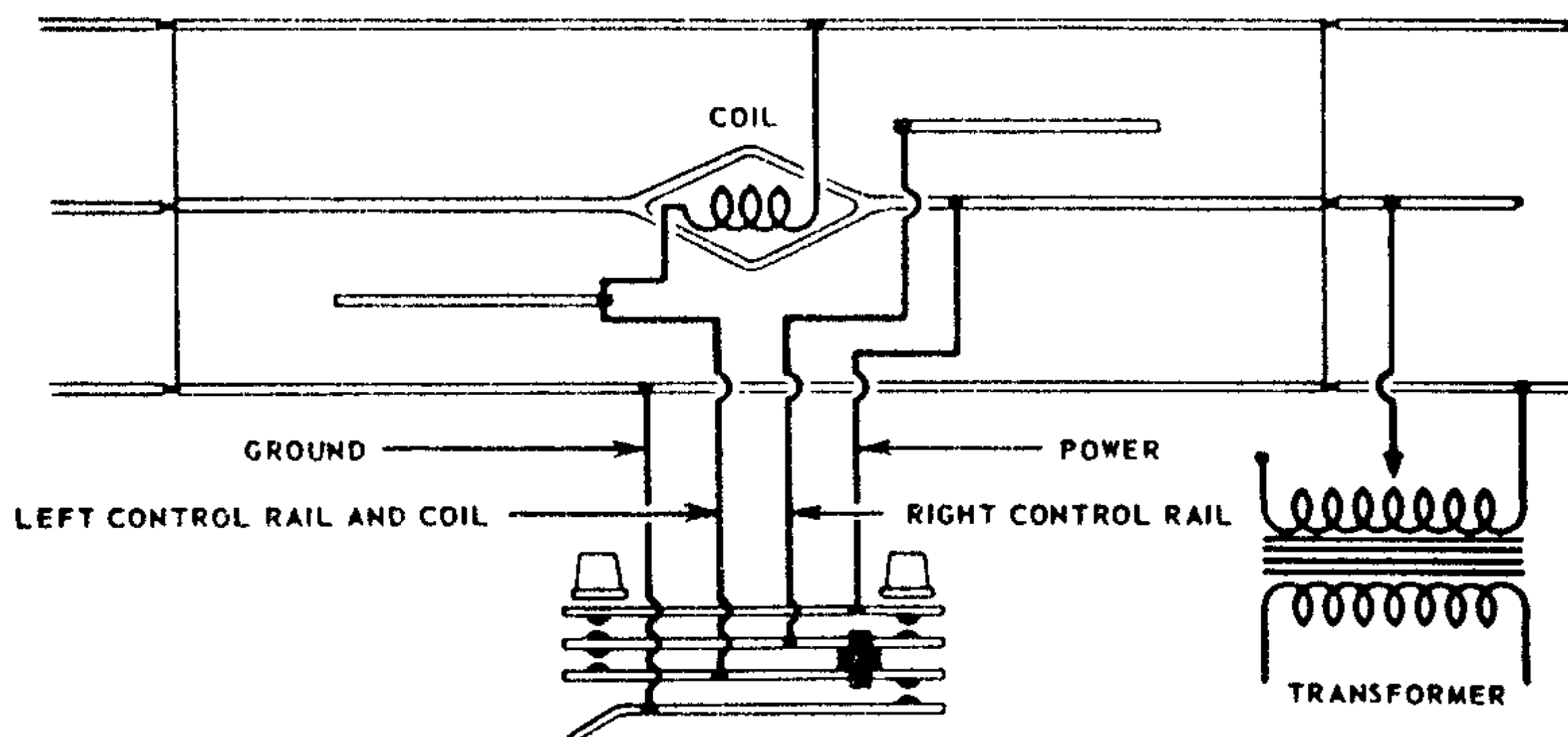


Figure 4 - Schematic Wiring Diagram of Remote Control Set No. 6019



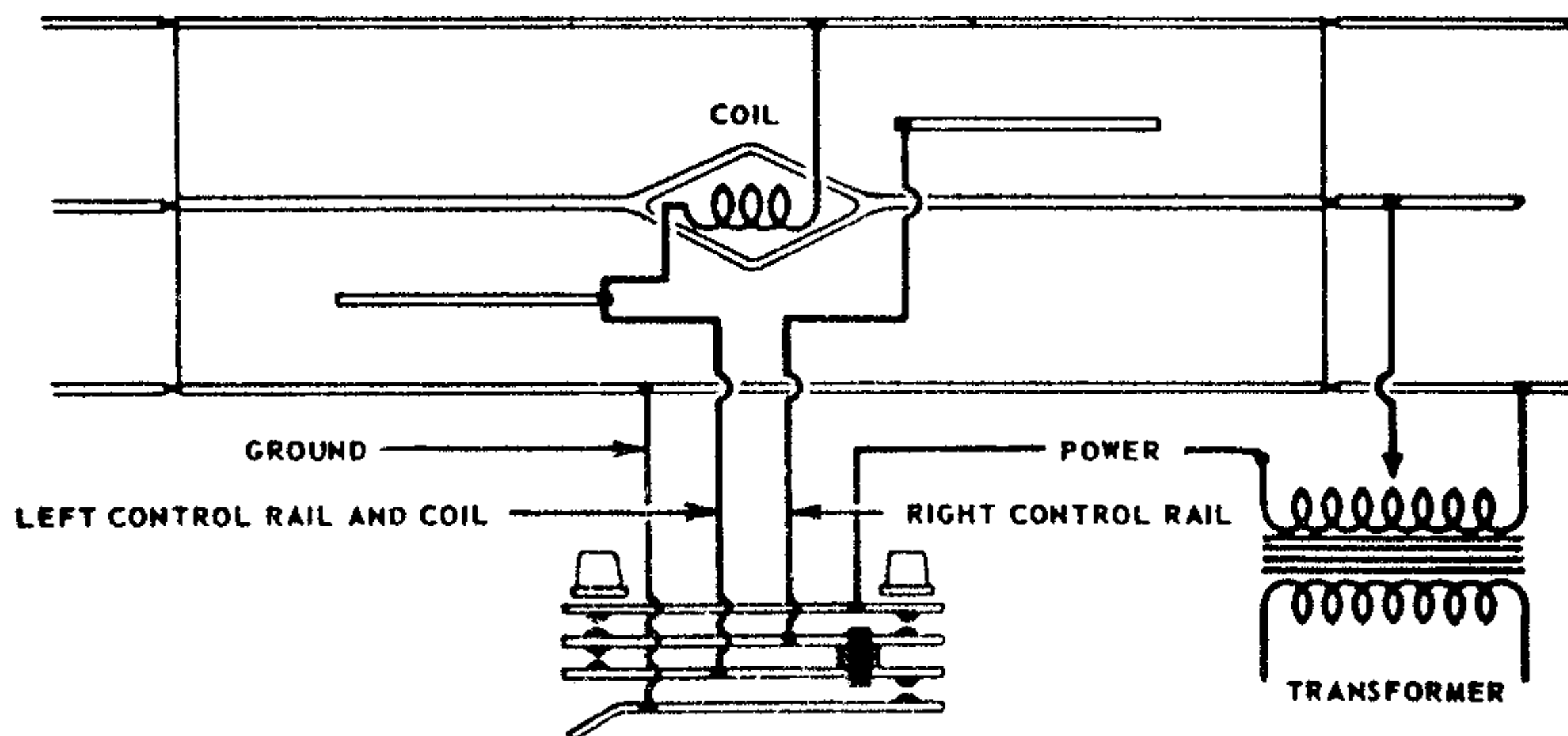
Note that for fixed voltage connection illustrated below the fourth conductor which normally leads to the power rail of the remote control section is connected directly to the transformer.

Fixed Voltage Operation

In normal usage the control rails and the electromagnet are energized by the regular variable track voltage applied to the entire track system, but it is sometimes desirable to permit a remote control section located in an insulated siding, etc. to receive fixed voltage directly from the transformer so that an operating car stationed in the siding might be unloaded even though the rest of the siding is 'dead'.

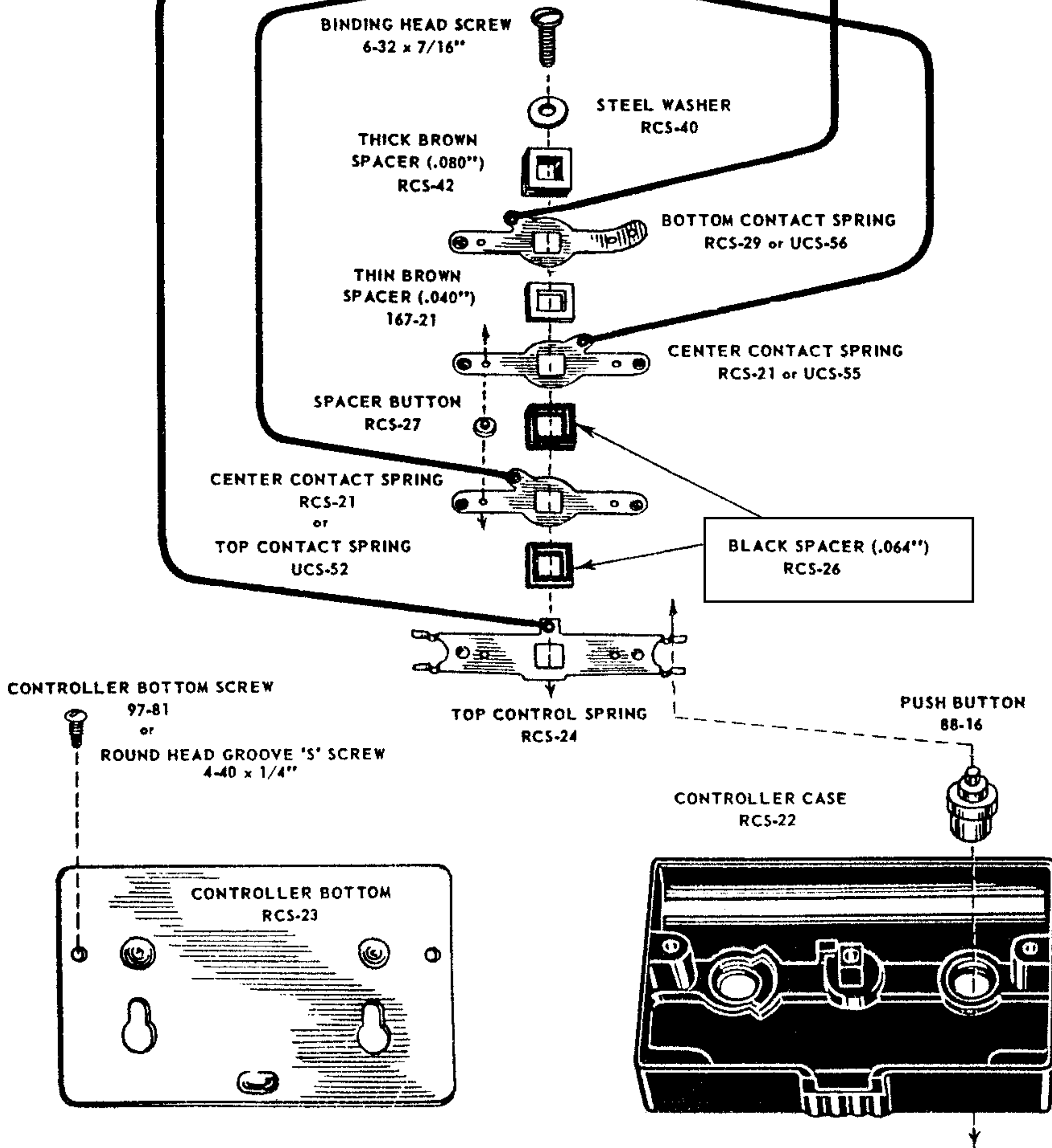
For this installation the controller wire which runs to the center power rail (See Figures 4, 6 and 8) should be disconnected from the remote control section and connected instead to a fixed voltage post on the transformer. To prevent a short circuit the fixed voltage and the variable track voltage circuits should have a common ground. A chart listing such fixed and variable voltage combinations for various transformers is given on Page 6, Section PS,

Figure 5 - Diagram for Connecting Fixed Voltage to Remote Control Set No. 6019



SERVICE MANUAL

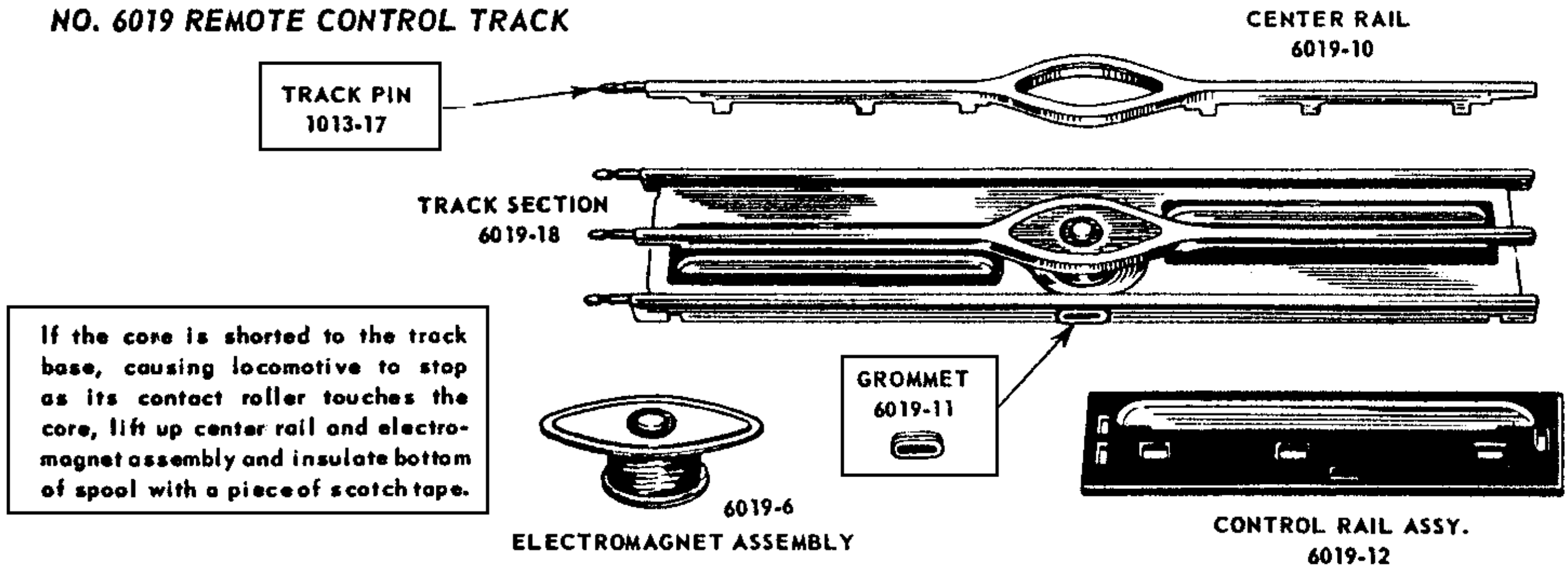
Pictorial Wiring Diagram of Remote Control Set No. 6019



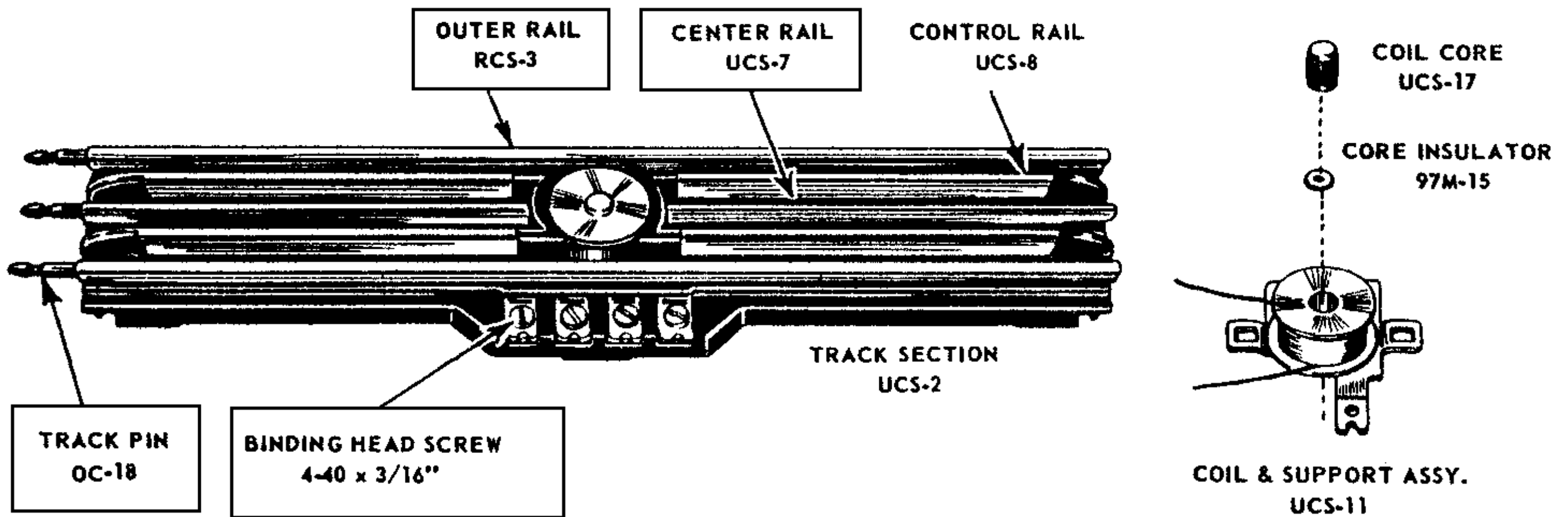
SERVICE MANUAL

OTTP-95

NO. 6019 REMOTE CONTROL TRACK



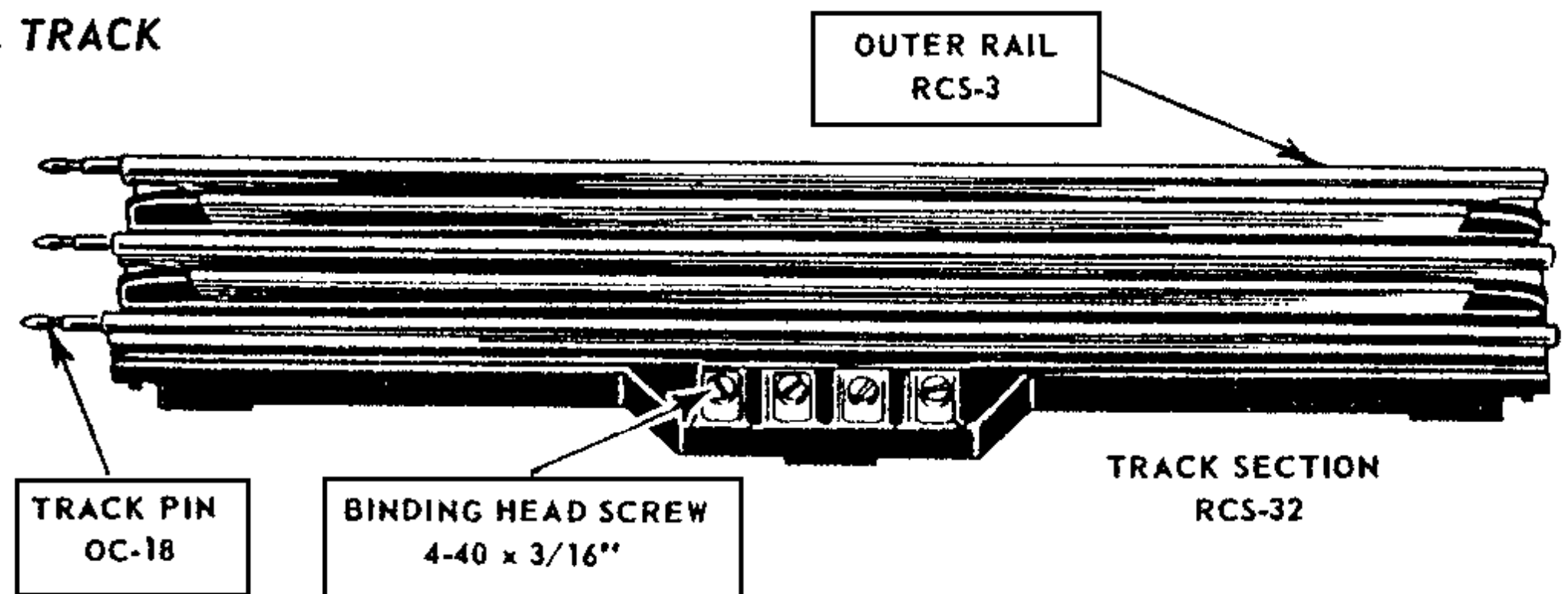
TYPE UCS REMOTE CONTROL TRACK



TYPE RCS REMOTE CONTROL TRACK

NOTE

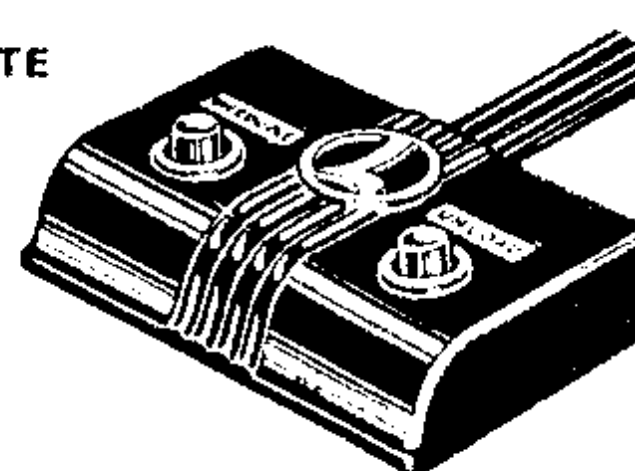
Remote control track section 1019-20 formerly used with '027' track is no longer available and should be replaced with track section 6019-18.



The three controllers listed are interchangeable electrically and differ from each other only in the treatment of the cable ends and in details of internal parts. Controller cables differ from each other in the same way. Controller Cable UCS-44 includes the spade lug terminals.

CONTROLLER COMPLETE

- RCS-20
- 6019-20
- UCS-40



- CONTROLLER CABLE**
- UCS-44
 - RCS-30
 - 6019-30

ALSO SOLD BY THE FOOT

SERVICE MANUAL6009 - Remote Control Track

<u>Part Number</u>	<u>Location</u>	<u>Unit Price</u>	<u>Min. Quan.</u>	<u>Description</u>
90-1	H-34	1.25		Controller Complete
96C-1	Substitute 90-1			Controller Complete
939		.04 ft.		2-Conductor Cable
1013-17	G-16	.15 dz.	12 dz.	Track Pin (027 Gauge)
6009-18	H-44	1.75		Track
6019-10	H-92	.30		Center Rail
6019-11	H-92	.05	12	Grommet (Cable)
6019-18	H-43	2.50		Track Section
6019-31	H-53	1.50		Electro-Magnet Coil Assem.

6019- "027" Remote Control Track

STC-6019

<u>Part Number</u>	<u>Location</u>	<u>Unit Price</u>	<u>Min. Quan.</u>	<u>Description</u>
1013-17	G-16	.15 dz.	12 dz.	Steel Track Pin
6019-10	H-92	.30		Center Rail
6019-11	H-92	.05	12	Grommet (Cable)
6019-18	H-43	2.50		Track Section
6019-31	H-53	1.50		Electro-Magnet Coil Assem.
6019-36	H-92	.30		Control Rail Assem.

- continued -

SERVICE MANUAL

OTTP 25

6019-20 - "027" Remote Track Controller

<u>Part Number</u>	<u>Location</u>	<u>Unit Price</u>	<u>Min. Quan.</u>	<u>Description</u>
88-16	H-82	.05	12	Push Button
167-21	J-102	.05	10	Thin Brown Spacer
934		.08 ft.		4-Conductor Cable
6019-20	H-32	2.50		Controller Complete
RCS-21	H-73	.20		Top Contact Spring
RCS-22	H-73	.60		Controller Cover
RCS-23	H-73	.25		Bottom Plate
RCS-24	H-83	.20		Top Control Spring
RCS-26	H-83	.05	12	Black Spacer
RCS-27	H-83	.05	12	Spacer Button
RCS-29	H-93	.15	4	Bottom Contact Spring
RCS-40	H-93	.05	12	Steel Washer
RCS-42	H-93	.05	12	Thick Brown Spacer
UCS-55	H-77	.20		Center Contact Spring
4-40 x 1/4		.02	25	RHST "Z" - Cover Screw
6-32 x 7/16		.02	25	BH - Contact Assem. Screw

6029 - Remote Control Track

STC-6029

<u>Part Number</u>	<u>Location</u>	<u>Unit Price</u>	<u>Min. Quan.</u>	<u>Description</u>
90-1	H-34	1.25		Controller
364C-16	J-84	.05	12	Terminal (Small)
1013-17	G-16	.15 dz.	12 dz.	Track Pin (027 Gauge)
6019-10	H-92	.30		Center Rail
6019-31	H-53	1.50		Coil Assem.
6019-32	H-92	.05	12	Core Piece
6019-39	H-53	.05	12	Fisherpaper Disk
6029-25	H-22	2.00		Track Assem.
4-40 x 3/16		.02	25	B. H. Terminal Screw