



\$10.00
#610-0047-001
ISSUED 8-2004

LIONEL

PARTS LIST AND PICTORIAL DIAGRAMS SUPPLEMENT 47

Produced by Lionel LLC®
50625 Richard W. Boulevard
Chesterfield, MI 48051-2493

CONTENTS

DIESEL ENGINE

SD 40

6-18298 UP
6-18299 CP
6-28523 SOO
6-28524 CHESSIE

U30 C

6-18274 BURLINGTON
6-18278 UP
6-18276 SEABOARD

STEAM LOCOMOTIVES

0-8-0 SWITCHER

6-38046 GN
6-38047 N&W
6-38048 NPR

ACCESSORIES

6-14167 #213 LIFT BRIDGE

PASSENGER CARS

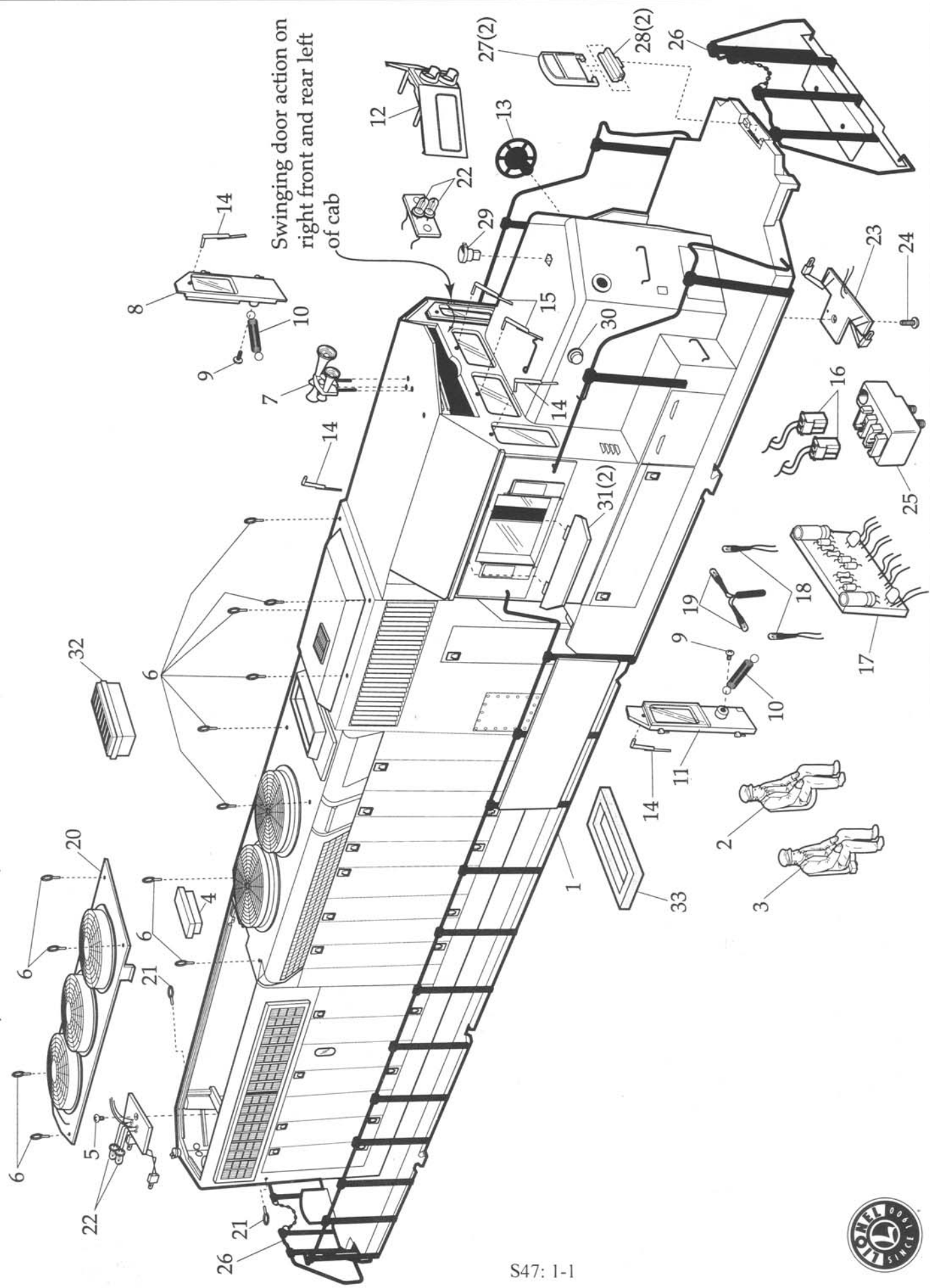
6-39197 CP
6-39198 PENNSY CONGRESSIONAL

COPYRIGHT©2003

By Lionel LLC®
All Rights Reserved

Lionel® and American Flyer® are the registered trademarks of Lionel LLC®
Chesterfield, MI

6-18298 UP, 6-18299 CP, 6-28523 SOO, 6-28524 CHESSIE SD-40-2 CAB ASSEMBLY



REF NO	PART NUMBER	ROAD NAME	QUANTITY		DESCRIPTION
			PER UNIT		
1	620-8523-007	SOO	1		SHELL COMPLETE SOO LINE #6622
	620-8524-007	CHESSIE	1		SHELL COMPLETE CHESSIE #7616
	610-8298-007	UP	1*		SHELL COMPLETE UP DESERT VICTORY #3593
	610-8299-007	CP	1*		SHELL COMPLETE CP #5420
2	620-8523-015	ALL	1		FIREMAN FIGURE W/SEAT
3	620-8523-014	ALL	1		ENGINEER FIGURE W/SEAT
4		ALL	1*		CAP - VENT
5		ALL	1*		SCREW - REAR LIGHT BOARD MOUNT
6	620-8523-005	SOO	12		LIFT RING - WHITE
	620-8524-005	CHESSIE	12		LIFT RING - BLUE
		UP, CP	12*		LIFT RING
7	620-8523-013	SOO	1		HORN - WHITE
	620-8524-013	CHESSIE	1		HORN - BLUE
		UP, CP	1*		HORN
8	620-8523-112	SOO	1		DOOR ASSEMBLY - FRONT - RED
	620-8524-112	CHESSIE	1		DOOR ASSEMBLY - FRONT
		UP, CP	1*		DOOR ASSEMBLY - FRONT
9		ALL	2*		SCREW - SPRING MOUNT
10		ALL	2*		SPRING - DOOR CLOSE
11	620-8523-114	SOO	1		DOOR ASSEMBLY - REAR - WHITE
	620-8524-114	CHESSIE	1		DOOR ASSEMBLY - REAR
		UP, CP	1*		DOOR ASSEMBLY - REAR
12		ALL	1*		HOUSING - HEADLAMP/NUMBER BOARD
13	620-8523-205	SOO	1		BRAKE WHEEL - RED
	620-8524-205	CHESSIE	1		BRAKE WHEEL - YELLOW
		UP, CP	1*		BRAKE WHEEL
14	620-8523-288	ALL	4		WINDSHIELD WIPER - BLACK - LEFT & RIGHT SET
15	620-8523-287	ALL	1		WIPER - BLACK - CENTER SET
16	610-8274-132	ALL	2		2 PIN LIGHT HARNESS CONNECTOR LEAD
17	610-8274-800	ALL	1		LIGHTING CIRCUIT BOARD
18	610-8274-301	ALL	2		CAB LAMP
19	610-8274-301	ALL	2		NUMBER BOARD LAMP
20		ALL	1*		BATTERY HATCH
21	620-8523-005	SOO	2		LIFT RING - WHITE
	620-8524-006	CHESSIE	2		LIFT RING - ORANGE
		UP, CP	2*		LIFT RING
22	610-8274-300	ALL	4		WHITE LED - HEADLAMP/LED ONLY
23		ALL	1*		MARKER LAMP CIRCUIT BOARD

*PARTS NOT AVAILABLE

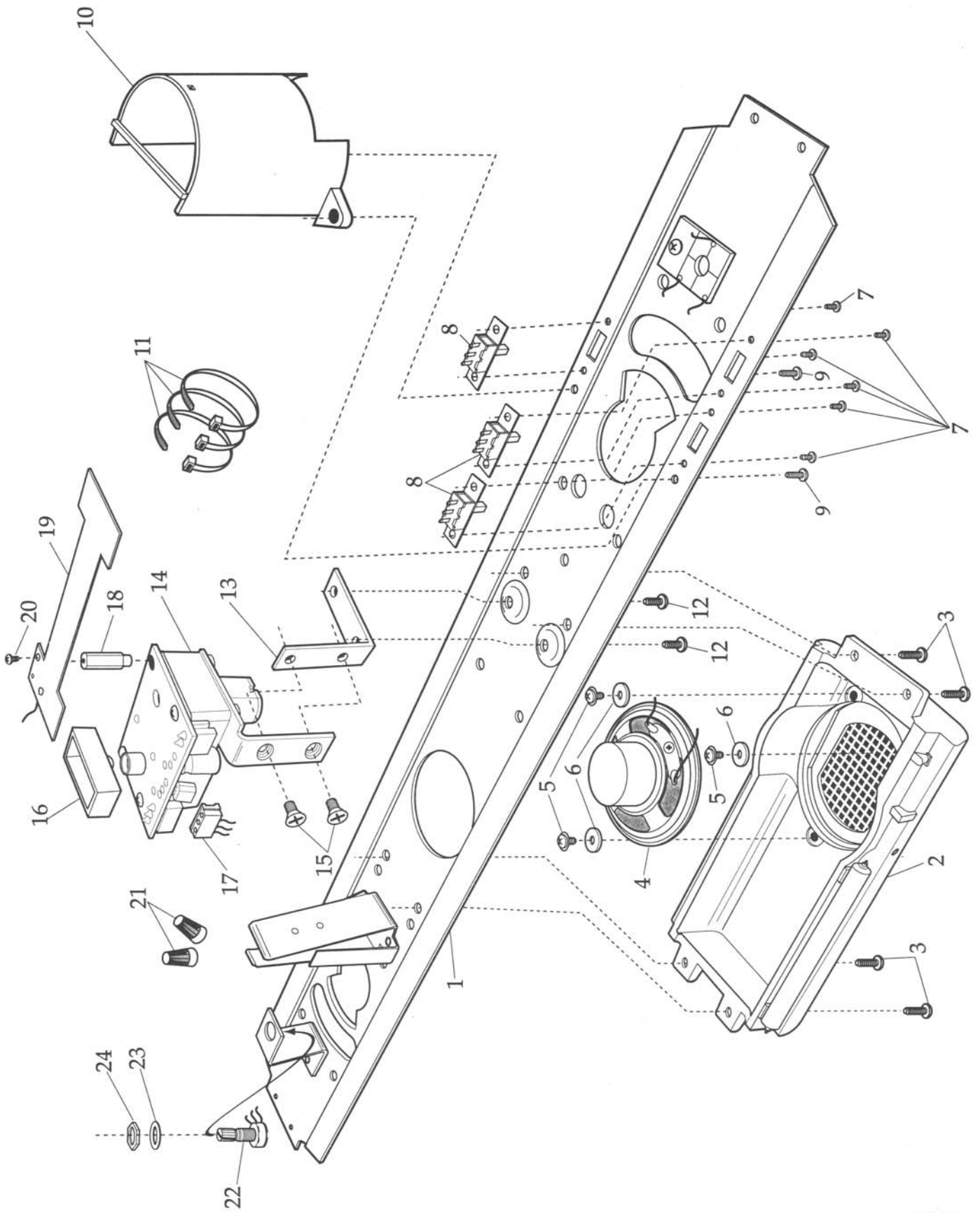


REF NO	PART NUMBER	ROAD NAME	QUANTITY PER UNIT	DESCRIPTION
24		ALL	1*	SCREW – CIRCUIT BOARD MOUNT
25		ALL	1*	LAMP CONTACT ASSEMBLY
26	620-8523-236	SOO	2	HANDRAIL W/CHAIN FRONT & REAR
	620-8524-236	CHESSIE	2	HANDRAIL W/CHAIN FRONT & REAR
		UP, CP	2*	HANDRAIL W/CHAIN FRONT & REAR
27	620-8523-237	SOO	2	STEP – FOLD DOWN RED FRONT & REAR
	620-8524-237	CHESSIE	2	STEP – FOLD DOWN FRONT & REAR
		UP, CP	2*	STEP – FOLD DOWN FRONT & REAR
28	620-8523-238	SOO	2	BASE HINGE – FOLD DOWN STEP FRONT & REAR
	620-8524-238	CHESSIE	2	BASE HINGE - FOLD DOWN STEP FRONT & REAR
		UP, CP	2*	BASE HINGE – FOLD DOWN STEP FRONT & REAR
29	620-8523-164	SOO	1	FILLER CAP RED
	620-8524-164	CHESSIE	1	FILLER CAP BLUE
		UP, CP	1*	FILLER CAP
30	620-8523-165	SOO	1	FILLER CAP/SIDE – RED
	620-8524-165	CHESSIE	1	FILLER CAP/SIDE – YELLOW
		UP, CP	1*	FILLER CAP/SIDE
31	620-8523-004	SOO	2	SUN SHADE – WHITE
	620-8524-004	CHESSIE	2	SUN SHADE – BLUE
		UP, CP	2*	SUN SHADE
32	620-8523-104	SOO	1	EXHAUST STACK – WHITE
	620-8524-104	CHESSIE	1	EXHAUST STACK – BLUE
		UP, CP	1*	EXHAUST STACK
33		ALL	1*	GASKET – SMOKE UNIT SEAL

*PARTS NOT AVAILABLE



SD-40-2 FRAME, SPEAKER, VOLUME CONTROL AND SMOKE UNIT ASSEMBLY



6-18298 UP, 6-18299 CP 6-28523 SOO LINE, 6-28524 CHESSIE, SD40-2
 FRAME/SPEAKER ASSEMBLY

REF NO	PART NUMBER	ROAD NAME	QUANTITY PER UNIT	DESCRIPTION
1		ALL	1*	FRAME W/BATTERY BRACKET
2		SOO	1*	FUEL TANK – BLACK
		CHESSIE	1*	FUEL TANK – BLUE
		UP	1*	FUEL TANK – CAMOUFLAGE
		CP	1*	FUEL TANK – BLACK
3		ALL	4*	SCREW – FUEL TANK MOUNT
4	610-9850-536	ALL	1	SPEAKER
5		ALL	3*	SCREW – SPEAKER MOUNT
6		ALL	3*	WASHER – SPEAKER MOUNT
7		ALL	6*	SCREW – SWITCH MOUNT
8	620-4510-303	ALL	3	SWITCH – RUN/PROGRAM, SMOKE,SOUND
9		ALL	2*	SCREW – MOTOR SHIELD MOUNT
10		SOO, CHESSIE,CP	1*	MOTOR SHIELD – RED
		UP	1*	MOTOR SHIELD – BEIGE
11	610-8301-055	ALL	3	WIRE TIE
12		ALL	2*	SCREW – SMOKE UNIT BRACKET MOUNT
13		ALL	1*	FRAME BRACKET – SMOKE UNIT MOUNT
14	6SP-8590-028	ALL	1	SMOKE UNIT*
15		ALL	2*	SCREW – SMOKE UNIT MOUNT
16		ALL	1*	SMOKE UNIT FUNNEL
17	610-8274-134	ALL	1	5 PIN HARNESS – LIGHTING/SMOKE UNIT
18		ALL	1*	STAND OFF – ANTENNA MOUNT
19		ALL	1*	ANTENNA
20		ALL	1*	SCREW – ANTENNA MOUNT
21	610-9001-030	ALL	2	WIRE NUTS
22	691-8040-T41	ALL	1	VOLUME CONTROL POTENTIOMETER
23	610-8007-170	ALL	1	WASHER – PONTENTIOMETER MOUNT
24	610-8007-180	ALL	1	NUT – POTENTIONETER MOUNT

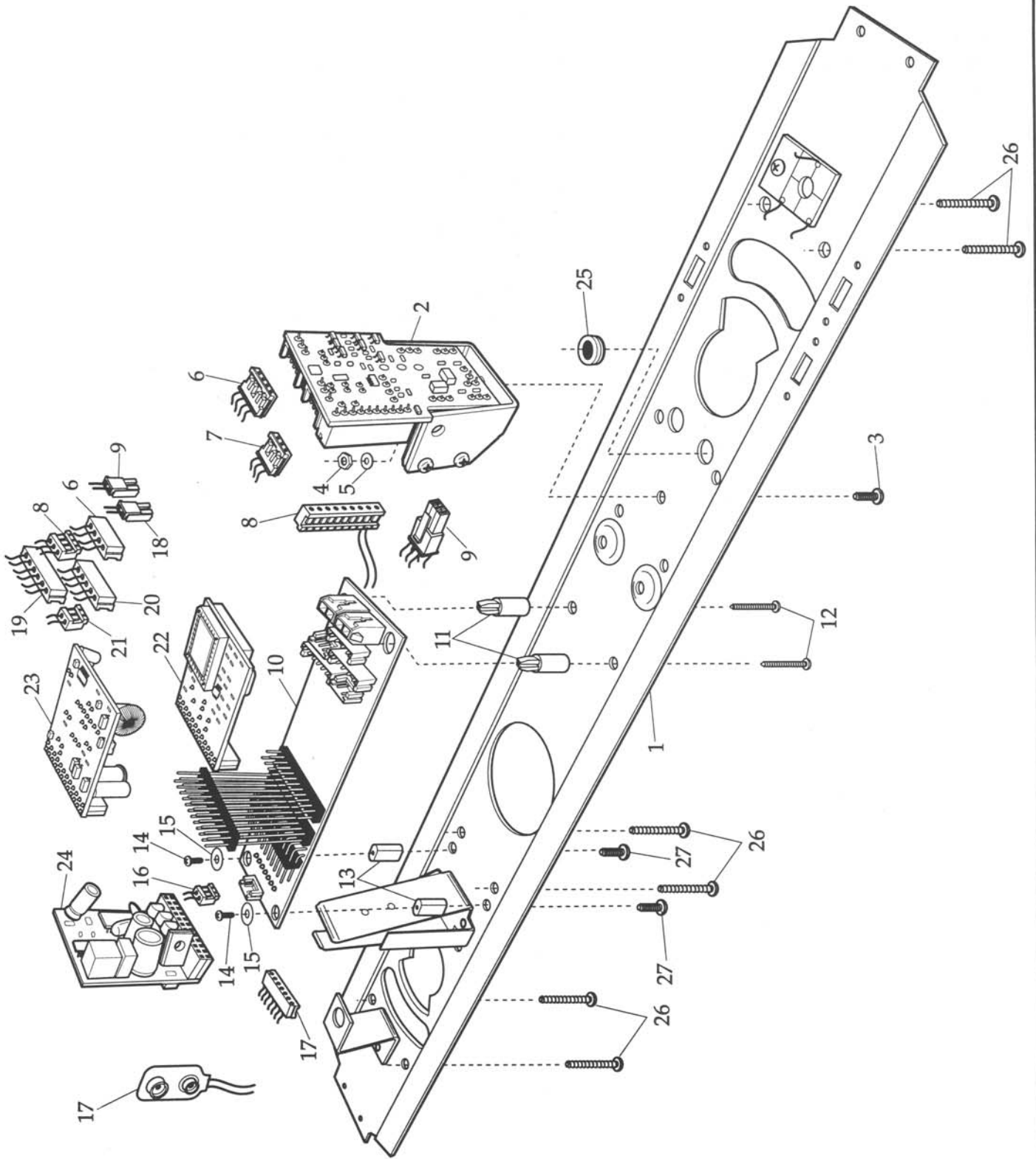
*PARTS NOT AVAILABLE

***CAUTION!** Although parts may appear similar substituting the 630-8085-200 27 OHM smoke unit in applications requiring an 8 OHM smoke unit will result in reduced smoke output.

Further: using an 8 OHM smoke unit in place of this 27 OHM smoke unit will result in overheating and severe product damage.



SD-40-2 CIRCUIT BOARD ASSEMBLY



6-18298 UP, 6-18299 CP 6-28523 SOO LINE, 6-28524 CHESSIE, SD40-2 CIRCUIT BOARD ASSEMBLY

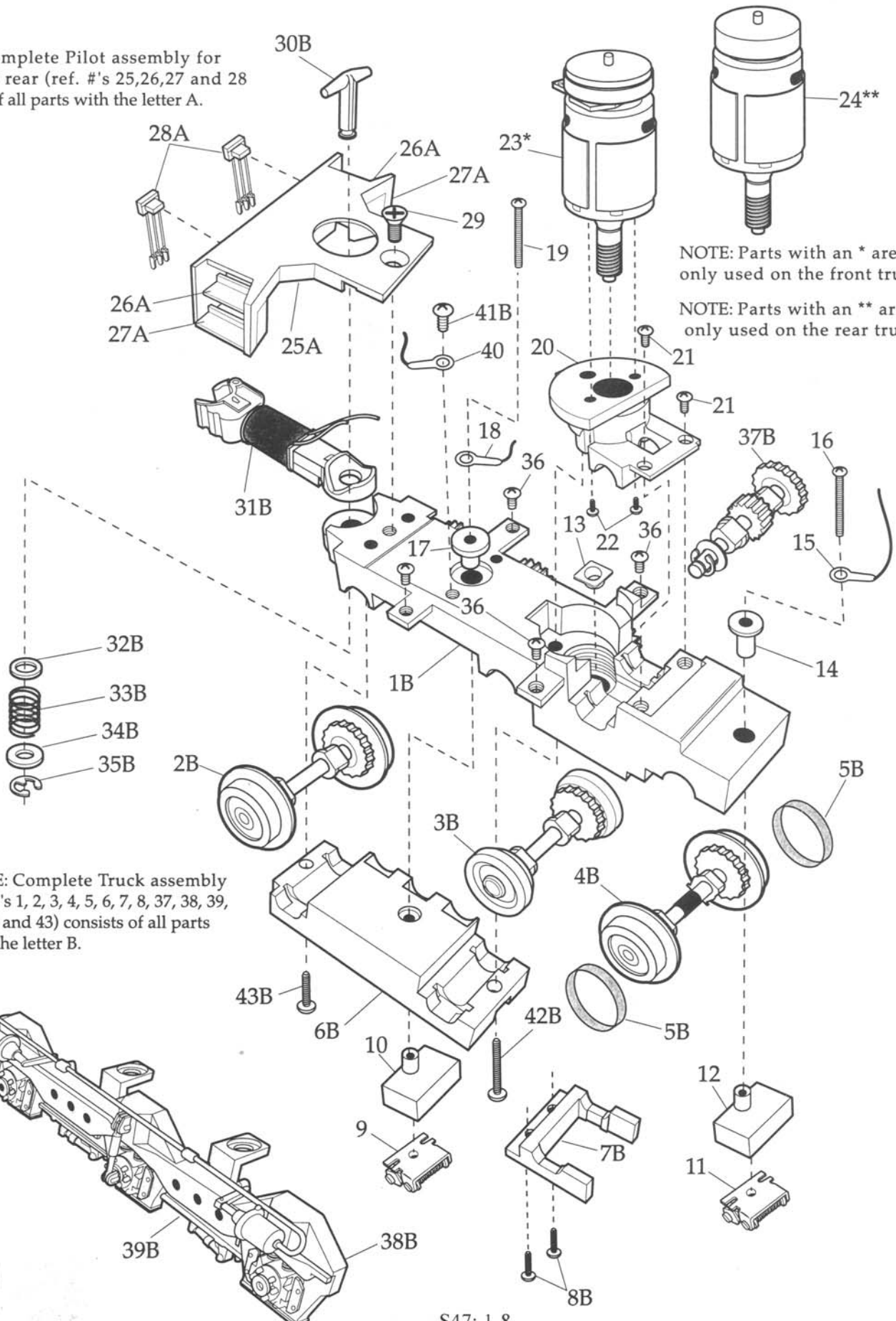
REF NO	PART NUMBER	ROAD NAME	PER UNIT	DESCRIPTION
1		ALL	1*	FRAME W/BATTERY BRACKET
2	691-DCDS-FM5	ALL	1	DCDRS BOARD (NOTE: HEATSINK NOT INCLUDED)
3		ALL	1*	SCREW – DCDRS BOARD MOUNT
4		ALL	1*	NUT – DCDRS BOARD MOUNT
5		ALL	1*	WASHER – DCDRS BOARD MOUNT
6	610-8274-130	ALL	1	4 PIN DCDRS HARNESS
7	610-8274-127	ALL	1	3PIN SPEED SENSOR HARNESS
8	610-8274-133	ALL	1	10 PIN DCDRS HARNESS
9	610-8274-126	ALL	1	6 PIN MOLEX DCDRS HARNESS
10	691-PCB1-11D	ALL	1	MOTHER BOARD
11		ALL	2*	STAND OFF – FRONT
12		ALL	2*	SCREW – FRONT STAND OFF MOUNT
13		ALL	2*	STAND OFF – REAR
14		ALL	2*	SCREW – MOTHER BOARD MOUNT
15		ALL	2*	INSULATED WASHER – MOTHER BOARD MOUNT
16	610-8855-550	ALL	1	COIL COUPLER (REAR)
17	610-8274-129	ALL	1	7 PIN BATTERY HARNESS
18	610-8274-124	ALL	1	2 PIN MOLEX – PICK UP ROLLER HARNESS
19	610-8274-131	ALL	1	6 PIN HARNESS – SPEAKER / VOLUME CONTROL
20	610-8274-134	ALL	1	5 PIN HARNESS – LIGHTING
21	610-8855-550	ALL	1	COIL COUPLER (FRONT)
22	691-PCB1-166	SOO	1	RAILSOUND 4 BOARD #6622 SOO LINE
	691-PCB1-132	CHESSIE	1	RAILSOUND 4 BOARD #7616 CHESSIE
	691-RS40-035	UP	1	RAILSOUND 4 BOARD #3593 UP
	691-RS40-036	CP	1	RAILSOUND 4 BOARD #5420 CP
23	691-PCB1-04D	ALL	1	RAILSOUND 4 POWER SUPPLY BOARD
24	691-R2LC-C08	ALL	1	COMMAND BOARD
25		ALL	1*	GROMMET
26		ALL	6*	SCREW – SHELL MOUNT
27		ALL	2*	SCREW – REAR STAND OFF MOUNT

*PARTS NOT AVAILABLE



SD-40-2 FRONT AND REAR MOTOR TRUCK ASSEMBLY

NOTE: Complete Pilot assembly for front and rear (ref. #'s 25,26,27 and 28) consists of all parts with the letter A.



NOTE: Parts with an * are only used on the front truck.

NOTE: Parts with an ** are only used on the rear truck.

NOTE: Complete Truck assembly (ref. #'s 1, 2, 3, 4, 5, 6, 7, 8, 37, 38, 39, 41, 42 and 43) consists of all parts with the letter B.



REF NO	PART NUMBER	ROAD NAME	QUANTITY PER UNIT	DESCRIPTION
1		ALL	2*	TRUCK FRAME /SD40-2/TOP
2		ALL	2*	WHEEL/AXLE ASSEMBLY FRONT – PLAIN/FLANGED
3		ALL	2*	WHEEL/AXLE ASSEMBLY MIDDLE – PLAIN/NO FLANGE
4		ALL	2*	WHEEL/AXLE ASSEMBLY REAR – UNDERCUT/ FLANGED
5	610-8274-206	ALL	4	TRACTION TIRES
6		ALL	2*	TRUCK FRAME/SD40-2/BOTTOM
7		ALL	2*	REAR AXLE RETAINER
8		ALL	4*	SCREW – RETAINER MOUNT
9	610-8596-183	ALL	2	PICK UP ROLLER ASSEMBLY – FRONT
10	620-8521-184	ALL	2	PICK UP ROLLER INSULATOR – FRONT
11	610-8274-183	ALL	2	PICK UP ROLLER ASSEMBLY – REAR
12	610-8274-181	ALL	2	PICK UP ROLLER INSULATOR – REAR
13		ALL	2*	THRUST BEARING
14	610-8274-182	ALL	2	PICK UP ROLLER INSULATOR TUBE – REAR
15	600-0082-043	ALL	2	SOLDER LUG
16		ALL	2*	SCREW – REAR PICK UP ROLLER MOUNT
17		ALL	2*	PICK UP ROLLER INSULATOR TUBE/ SD40-2/ FRONT
18	600-0082-043	ALL	2	SOLDER LUG
19		ALL	2*	SCREW – FRONT PICK UP ROLLER MOUNT
20		ALL	2*	MOTOR MOUNTING PLATE
21		ALL	4*	SCREW – MOUNTING PLATE MOUNT
22		ALL	4*	SCREW – MOTOR MOUNT
23	610-8274-101	ALL	1	FRONT MOTOR W/ODYSSEY SENSOR
24	610-8274-100	ALL	1	REAR MOTOR
25	620-8523-103	SOO	2	PILOT ASSEMBLY COMPLETE – BLACK
	620-8524-103	CHESSIE	2	PILOT ASSEMBLY COMPLETE – BLUE
		UP	2*	PILOT ASSEMBLY COMPLETE – CAMOUFLAGE
		CP	2*	PILOT ASSEMBLY COMPLETE – BLACK/WHITE

*PARTS NOT AVAILABLE

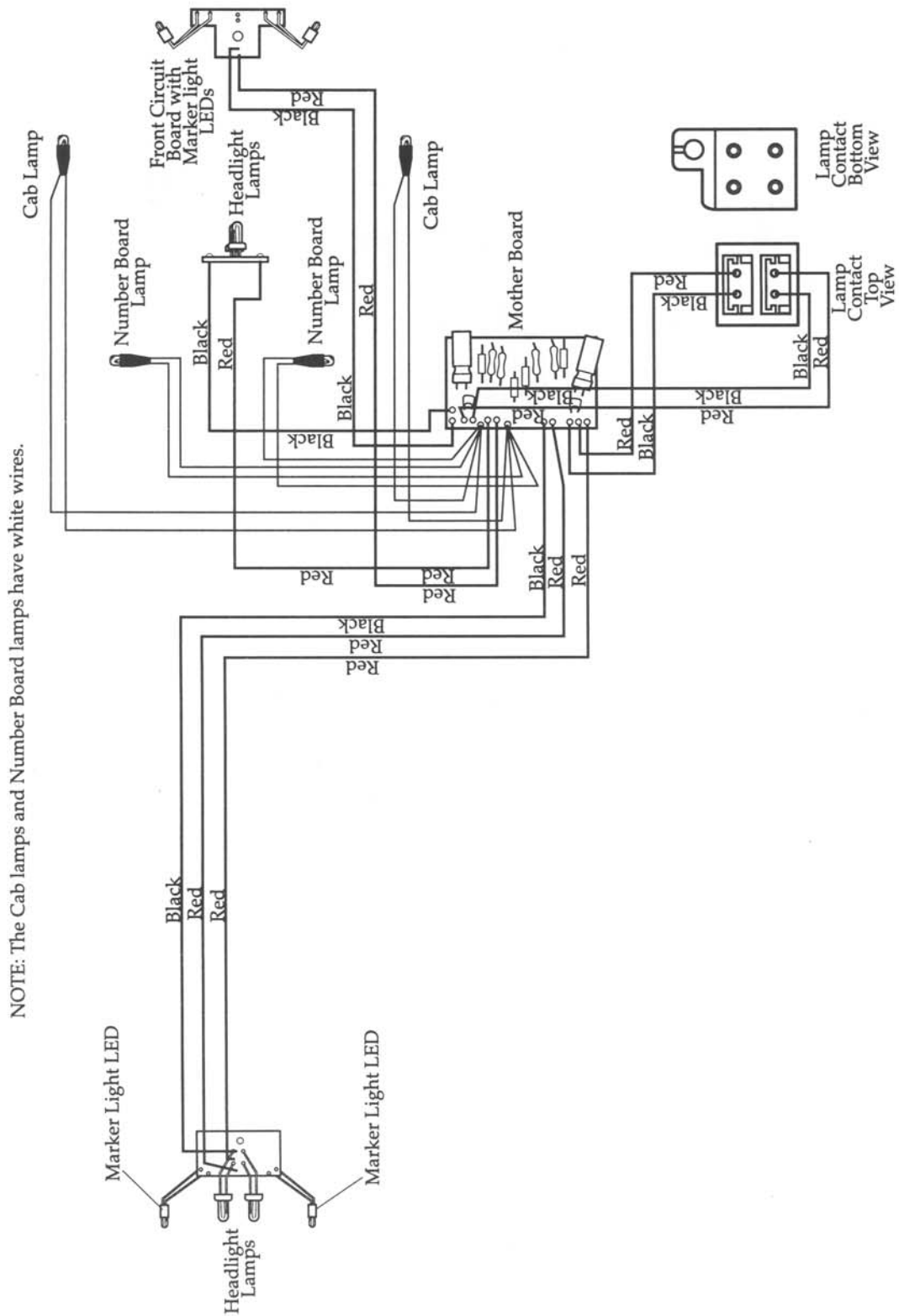


REF NO	PART NUMBER	ROAD NAME	QUANTITY PER UNIT	DESCRIPTION
26	620-8523-106	SOO	4	STEP/SHORT – BLACK
	620-8524-106	CHESSIE	4	STEP/SHORT – BLUE W/ORANGE STRIPE
		UP	4*	STEP/SHORT – CAMOUFLAGE
		CP	4*	STEP/SHORT – BLACK W/WHITE STRIPE
27	620-8523-105	SOO,UP	4	STEP/LONG – BLACK W/WHITE STRIPE
	620-8524-105	CHESSIE	4	STEP/LONG – BLUE W/ORANGE STRIPE
		UP	4*	STEP/LONG – CAMOUFLAGE
28	610-8274-120	ALL	4	AIR HOSE
29		ALL	2*	SCREW – PILOT MOUNT
30		ALL	2*	COUPLER HEAD SHAFT
31	610-8855-550	ALL	2	COIL COUPLER FRONT & REAR
32		ALL	2	WASHER – METAL
33		ALL	2*	SPRING – COUPLER CENTERING
34		ALL	2*	WASHER – FIBER
35	690-671M-022	ALL	2	RETAINING CLIP
36		ALL	8*	SCREW – TRUCK SIDE MOUNT
37	610-8274-080	ALL	2	WORM GEAR ASSEMBLY
38	620-8523-185	SOO	2	TRUCK SIDE – RIGHT HAND – BLACK W/O BRAKE DETAIL
	620-8524-185	CHESSIE	2	TRUCK SIDE – RIGHT HAND – BLUE W/O BRAKE DETAIL
		UP	2*	TRUCK SIDE – RIGHT HAND – CAMOUFLAGE
		CP	2*	TRUCK SIDE – RIGHT HAND – BLACK
39	620-8523-186	SOO	2	TRUCK SIDE – LEFT HAND – BLACK W/O BRAKE DETAIL
	620-8524-186	CHESSIE	2	TRUCK SIDE – LEFT HAND – BLUE W/O BRAKE DETAIL
		UP	2*	TRUCK SIDE - LEFT HAND – CAMOUFLAGE
		CP	2*	TRUCK SIDE – LEFT HAND – BLACK
40	600-0082-043	ALL	2	SOLDER LUG
41		ALL	2	SCREW – SOLDER LUG MOUNT
42		ALL	2	SCREW – TRUCK FRAME BOTTOM / MOTOR MOUNT
43		ALL	2	SCREW – TRUCK FRAME BOTTOM MOUNT

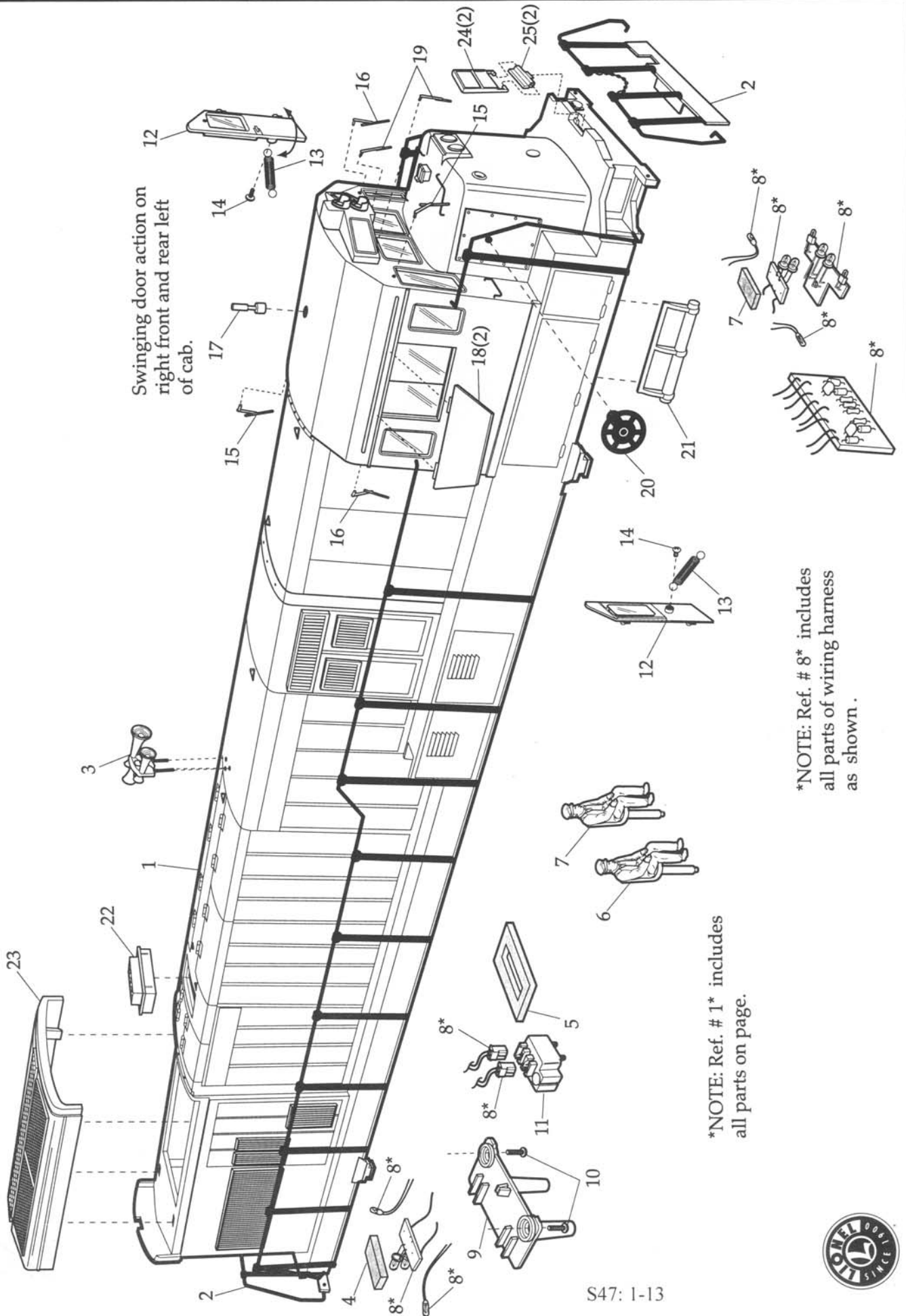
*PARTS NOT AVAILABLE



SD-40-2 DIESEL WITH COMMAND CONTROL AND RAILSOUNDS FRONT AND REAR HEADLIGHTS, CAB LIGHTS, NUMBER BOARD LIGHTS AND MARKER LIGHT LED'S PICTORIAL WIRING DIAGRAM



6-18274 BURLINGTON, 6-18278 UP, 6-18276 SEABOARD U30C CAB ASSEMBLY



REF NO	PART NUMBER	ROAD NAME	QUANTITY		DESCRIPTION
			PER UNIT		
1	610-8274-007	BURLINGTON	1*		SHELL #891
	610-8276-007	SEABOARD	1		SHELL #7274
	610-8278-007	UP	1*		SHELL #2938
2	610-8274-236	BURLINGTON	2		HANDRAIL W/CHAIN – FRONT & REAR
	610-8276-236	SEABOARD	2		HANDRAIL W/CHAIN – FRONT & REAR
	610-8278-236	UP	2		HANDRAIL W/CHAIN – FRONT & REAR
3	610-8274-013	BURLINGTON	1		HORN
	610-8276-013	SEABOARD	1		HORN
	610-8278-013	UP	1		HORN
4		ALL	1*		ADHESIVE PAD
5		ALL	1*		EXHAUST STACK GASKET
6	610-8274-014	ALL	1		ENGINEER FIGURE W/SEAT
7	610-8274-015	ALL	1		FIREMAN FIGURE W/SEAT
8		ALL	1*		LAMP HARNESS COMPLETE
9		ALL	1*		MOUNTING BRACKET – REAR
10		ALL	2*		SCREW – MOUNTING BRACKET MOUNT
11		ALL	1*		LAMP CONTACT ASSEMBLY
12	610-8274-112	BURLINGTON	2		DOOR ASSEMBLY
	610-8276-112	SEABOARD	2		DOOR ASSEMBLY
	610-8278-112	UP	2		DOOR ASSEMBLY
13		ALL	2*		DOOR SPRING
14		ALL	2*		SCREW – SPRING MOUNT
15	610-8274-289	BURLINGTON	2		WINDSHIELD WIPER – RIGHT HAND
	610-8276-289	SEABOARD	2		WINDSHIELD WIPER – RIGHT HAND
	610-8278-289	UP	2		WINDSHIELD WIPER – RIGHT HAND
16	610-8274-288	BURLINGTON	2		WINDSHIELD WIPER – LEFT HAND
	610-8276-288	SEABOARD	2		WINDSHIELD WIPER – LEFT HAND
	610-8278-288	UP	2		WINDSHIELD WIPER – LEFT HAND
17	610-8274-012	BURLINGTON	1		RADIO ANTENNA
	NOT USED	SEABOARD	0		RADIO ANTENNA
	610-8278-012	UP	1		RADIO ANTENNA
18	610-8274-004	BURLINGTON	2		SUN SHADE
	610-8276-004	SEABOARD	2		SUN SHADE
	610-8278-004	UP	2		SUN SHADE
19	610-8274-287	BURLINGTON	2		WINDSHIELD WIPER SET – CAB FRONT
	610-8276-287	SEABOARD	2		WINDSHIELD WIPER SET – CAB FRONT
	610-8278-287	UP	2		WINDSHIELD WIPER SET – CAB FRONT

*PARTS NOT AVAILABLE

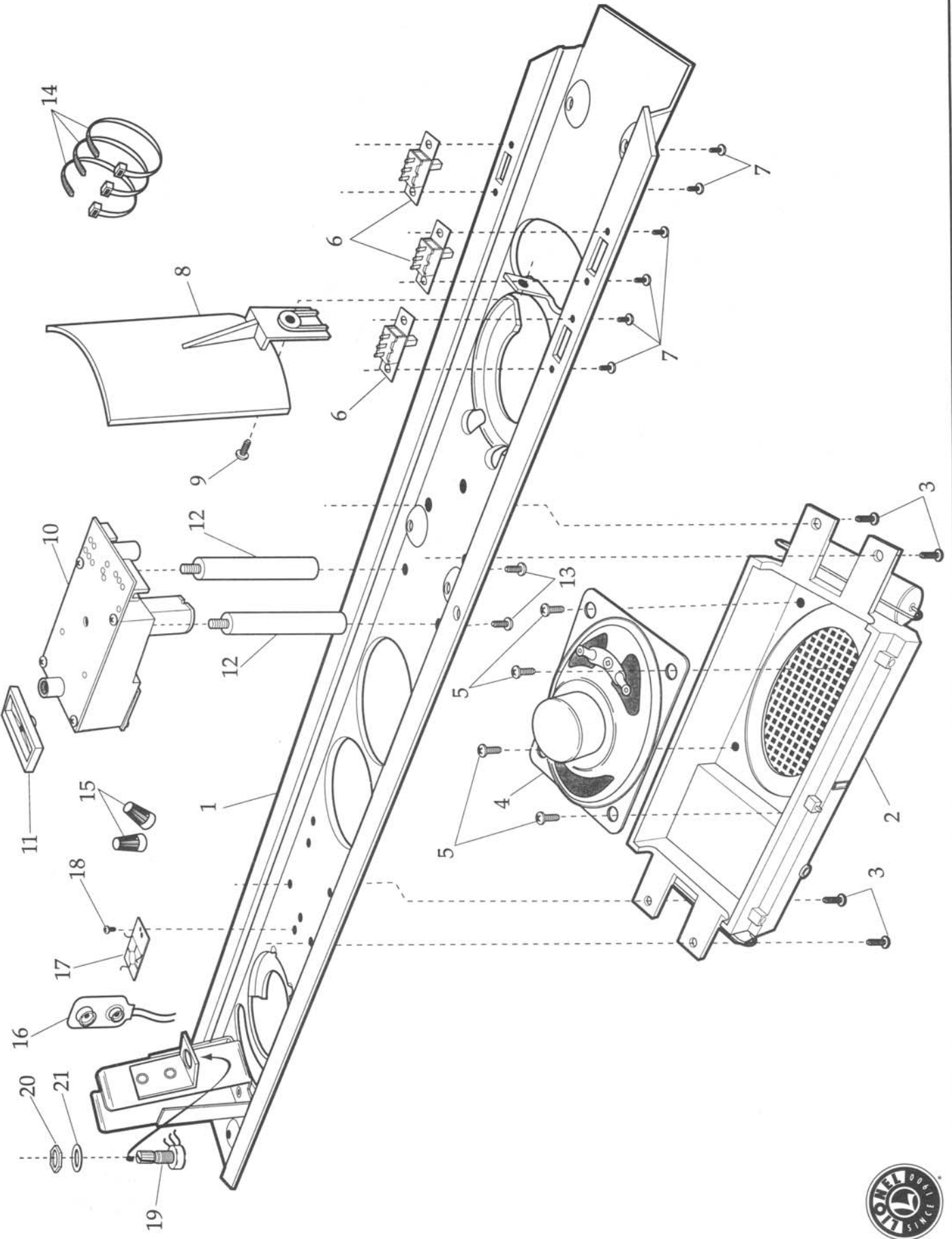


REF NO	PART NUMBER	ROAD NAME	QUANTITY PER UNIT	DESCRIPTION
20	610-8274-205	BURLINGTON	1	BRAKEWHEEL
	610-8276-205	SEABOARD	1	BRAKEWHEEL
	610-8278-205	UP	1	BRAKEWHEEL
21	610-8274-113	BURLINGTON	1	AIR CYLINDER
	610-8276-113	SEABOARD	1	AIR CYLINDER
	610-8278-113	UP	1	AIR CYLINDER
22	610-8274-104	BURLINGTON	1	EXHAUST STACK
	610-8276-104	SEABOARD	1	EXHAUST STACK
	610-8278-104	UP	1	EXHAUST STACK
23	610-8274-024	BURLINGTON	1	BATTERY HATCH
	610-8276-024	SEABOARD	1	BATTERY HATCH
	610-8278-024	UP	1	BATTERY HATCH
24	610-8274-237	BURLINGTON	2	FOLD DOWN STEP
	610-8276-237	SEABOARD	2	FOLD DOWN STEP
	610-8278-237	UP	2	FOLD DOWN STEP
25	610-8274-238	BURLINGTON	2	STEP BASE HINGE
	610-8276-238	SEABOARD	2	STEP BASE HINGE
	610-8278-238	UP	2	STEP BASE HINGE

*PARTS NOT AVAILABLE



U30C FRAME, SPEAKER, VOLUME CONTROL AND SMOKE UNIT ASSEMBLY



S47: 1-16



6-18274 BURLINGTON, 6-18276 SEABOARD, 6-18278 UP U30C FRAME/SPEAKER ASSEMBLY

REF NO	PART NUMBER	ROAD NAME	QUANTITY PER UNIT	DESCRIPTION
1		ALL	1*	FRAME W/BATTERY BRACKET
2		BURLINGTON SEABOARD	1*	FUEL TANK – BLACK
		UP	1*	FUEL TANK – GREY
3		ALL	4*	SCREW – FUEL TANK MOUNT
4	610-8064-536	ALL	1	SPEAKER
5		ALL	4*	SCREW – SPEAKER MOUNT
6	620-4510-303	ALL	3	SWITCH – RUN/PROGRAM, SMOKE,SOUND
7		ALL	6*	SCREW – SWITCH MOUNT
8		BURLINGTON	1*	MOTOR SHIELD – GREY
		SEABOARD	1*	MOTOR SHIELD – GREY
		UP	1*	MOTOR SHIELD – DARK GREY
9		ALL	1*	SCREW – SHIELD MOUNT
10	610-8057-200	ALL	1	SMOKE UNIT*
11	610-8274-192	ALL	1*	SMOKE UNIT FUNNEL
12	610-8274-204	ALL	2	STANDOFF – SMOKE UNIT MOUNT
13		ALL	2*	SCREW – STANDOFF MOUNT
14	610-8301-055	ALL	3	WIRE TIE
15	610-6666-022	ALL	2	WIRE NUT
16	610-8274-129	ALL	1	7 PIN BATTERY HARNESS
17		ALL	1*	CONTACT PAD
18		ALL	1*	SCREW – CONTACT PAD MOUNT
19	691-8040-T41	ALL	1	VOLUME CONTROL POTENTIOMETER
20	610-8007-180	ALL	1	NUT – POTENTIOMETER MOUNT
21	610-8007-170	ALL	1	WASHER – POTENTIOMETER MOUNT

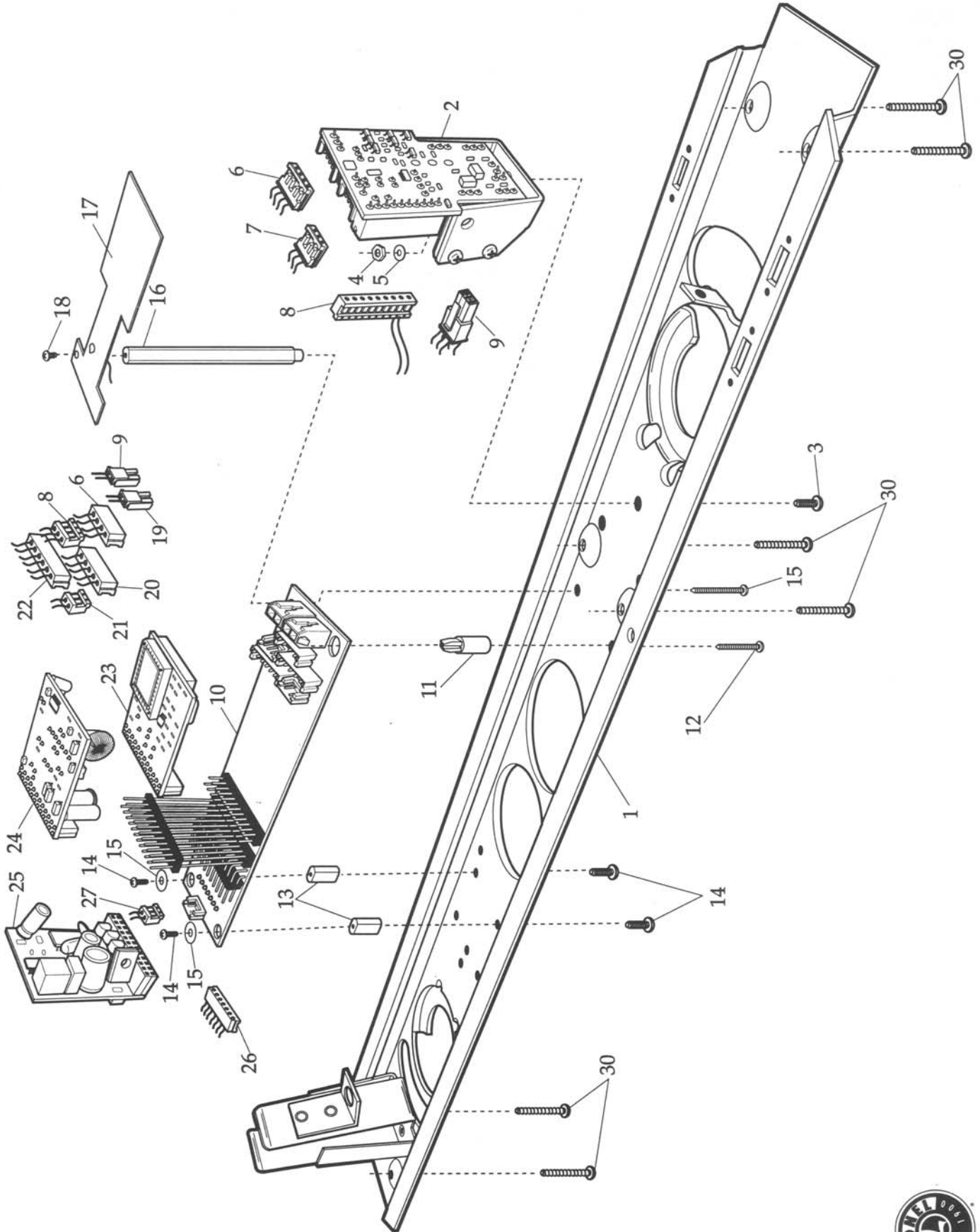
*PARTS NOT AVAILABLE

***CAUTION!** Although parts may appear similar substituting the 630-8085-200 27 OHM smoke unit in applications requiring an 8 OHM smoke unit will result in reduced smoke output.

Further: using an 8 OHM smoke unit in place of this 27 OHM smoke unit will result in overheating and severe product damage.



U30C CIRCUIT BOARD ASSEMBLY



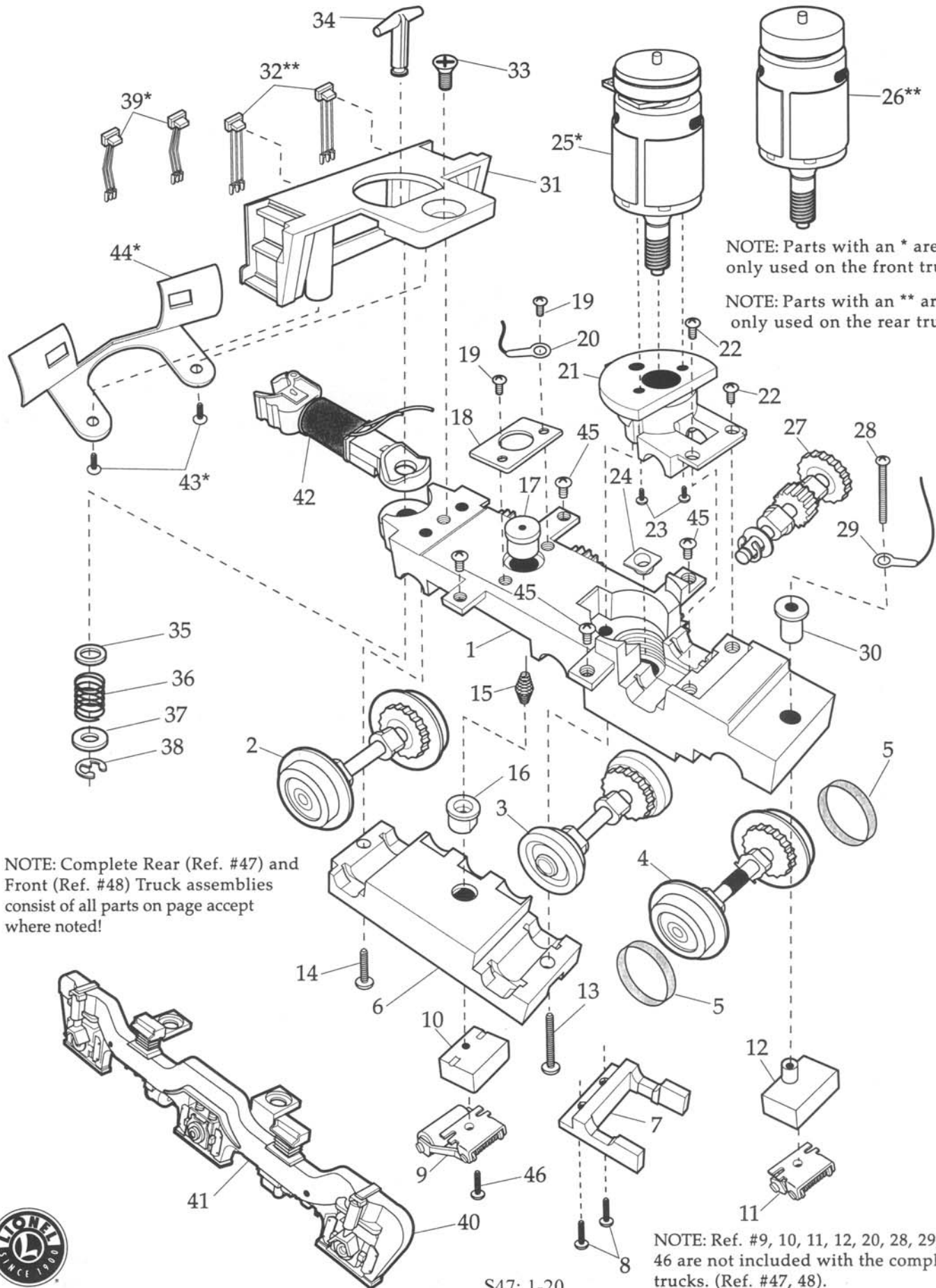
6-18274 BURLINGTON, 6-18276 SEABOARD, 6-18278 UP U30C CIRCUIT BOARD ASSEMBLY

REF NO	PART NUMBER	ROAD NAME	QUANTITY PER UNIT	DESCRIPTION
1		ALL	1*	FRAME W/BATTERY BRACKET
2	691-DCDS-FM5	ALL	1	DCDRS BOARD (NOTE: HEATSINK NOT INCLUDED)
3		ALL	1*	SCREW-DCDRS BOARD MOUNT
4		ALL	1*	NUT-DCDRS BOARD MOUNT
5		ALL	1*	WASHER-DCDRS BOARD MOUNT
6	610-8274-130	ALL	1	4 PIN DCDRS HARNESS
7	610-8274-127	ALL	1	3 PIN SPEED SENSOR HARNESS
8	610-8274-133	ALL	1	10 PIN DCDRS HARNESS
9	610-8274-126	ALL	1	6 PIN MOLEX DCDRS HARNESS
10	691-PCB1-11D	ALL	1	MOTHERBOARD
11		ALL	1*	STANDOFF - FRONT RIGHT
12		ALL	1*	SCREW - STANDOFF MOUNT
13		ALL	3*	STANDOFF - REAR/FRONT LEFT
14		ALL	4*	SCREW - STANDOFF MOUNT
15		ALL	2*	INSULATED WASHER
16	610-8274-190	ALL	1	STANDOFF - ANTENNA MOUNT
17		ALL	1*	ANTENNA
18		ALL	1*	SCREW - ANTENNA MOUNT
19	610-8274-124	ALL	1	2 PIN MOLEX PICKUP ROLLER HARNESS
20	610-8274-134	ALL	1	5 PIN HARNESS - LIGHTING
21	610-8274-550	ALL	1	COIL COUPLER (FRONT)
22	610-8274-131	ALL	1	6 PIN HARNESS - SPEAKER/VOLUME CONTROL
23	691-PCB1-126	BURLINGTON	1	RAILSOUND 4 BOARD #891 BURLINGTON
	691-PCB1-128	SEABOARD	1	RAILSOUND 4 BOARD #7274 SEABOARD
	691-PCB1-128	UP	1	RAILSOUND 4 BOARD #2463 UP
24	691-PCB1-04D	ALL	1	RAILSOUND 4 POWER SUPPLY BOARD
25	691-R2LC-C08	ALL	1	COMMAND BOARD
26	610-8274-129	ALL	1	7 PIN BATTERY HARNESS
27	610-8274-550	ALL	1	COIL COUPLER (REAR)

*PARTS NOT AVAILABLE



U30C FRONT AND REAR MOTOR TRUCK ASSEMBLY



NOTE: Parts with an * are only used on the front truck.

NOTE: Parts with an ** are only used on the rear truck.

NOTE: Complete Rear (Ref. #47) and Front (Ref. #48) Truck assemblies consist of all parts on page except where noted!

NOTE: Ref. #9, 10, 11, 12, 20, 28, 29, 30, 46 are not included with the complete trucks. (Ref. #47, 48).



REF NO	PART NUMBER	ROAD NAME	QUANTITY PER UNIT	DESCRIPTION
1		ALL	2*	TRUCK FRAME – TOP
2		ALL	2*	WHEEL/AXLE ASSEMBLY FRONT – PLAIN/FLANGED
3		ALL	2*	WHEEL/AXLE ASSEMBLY MIDDLE – PLAIN/NO FLANGE
4		ALL	2*	WHEEL/AXLE ASSEMBLY REAR – UNDERCUT/FLANGED
5	610-8274-206	ALL	4	TRACTION TIRE
6		ALL	2*	TRUCK FRAME BOTTOM
7		ALL	2*	REAR AXLE RETAINER
8		ALL	4*	SCREW – RETAINER MOUNT
9	610-8274-173	ALL	2	PICKUP ROLLER ASSEMBLY – FRONT
10	610-8274-171	ALL	2	PICK UP ROLLER INSULATOR – FRONT
11	610-8274-183	ALL	2	PICK UP ROLLER ASSEMBLY – REAR
12	610-8274-181	ALL	2	PICK UP ROLLER INSULATOR – REAR
13		ALL	2*	SCREW – TRUCK FRAME BOTTOM MOUNT
14		ALL	2*	SCREW – TRUCK FRAME BOTTOM MOUNT
15	610-8274-172	ALL	2	PICK UP ROLLER CONTACT SPRING
16	610-8274-170	ALL	2	CONTACT SPRING - BOTTOM INSULATOR
17		ALL	2	CONTACT SPRING - TOP INSULATOR
18		ALL	2*	RETAINER PLATE
19		ALL	4*	SCREW RETAINER PLATE MOUNT
20	600-0082-043	ALL	2	SOLDER LUG
21		ALL	2*	MOTOR MOUNTING PLATE
22		ALL	4*	SCREW – MOUNTING PLATE MOUNT
23		ALL	4*	SCREW – MOTOR MOUNT
24		ALL	2*	THRUST BEARING
25	610-8274-101	ALL	1	FRONT MOTOR W/ODYSSEY SENSOR
26	610-8274-100	ALL	1	REAR MOTOR
27	610-8274-080	ALL	2	WORM GEAR ASSEMBLY
28		ALL	2*	SCREW – REAR PICK UP ROLLER MOUNT
29	600-0082-043	ALL	2	SOLDER LUG
30	610-8274-182	ALL	2	PICK UP ROLLER INSULATOR TUBE – REAR

*PARTS NOT AVAILABLE

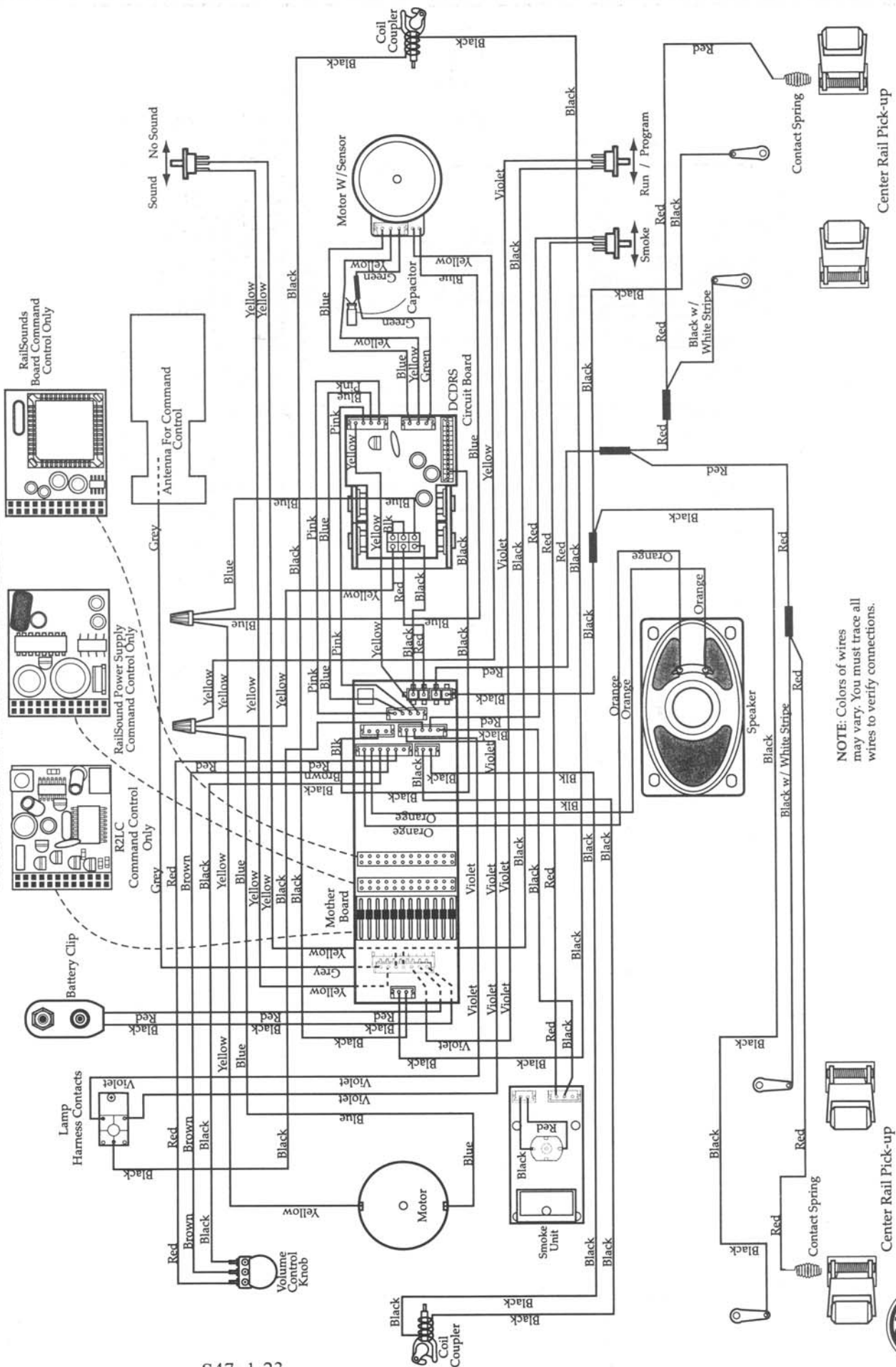


REF NO	PART NUMBER	ROAD NAME	QUANTITY PER UNIT	DESCRIPTION
31	610-8274-103	BURLINGTON	2	PILOT – RED- FRONT & REAR – W/O AIR HOSE
	610-8276-103	SEABOARD	2	PILOT – GREY W/BLACK & WHITE STRIPES FRONT & REAR W/O AIR HOSE
	610-8278-103	UP	2	PILOT – GREY FRONT & REAR W/O AIR HOSE
32	610-8274-120	ALL	2	AIR HOSE – REAR – STRAIGHT DOWN
33		ALL	2*	SCREW – PILOT MOUNT
34		ALL	2*	COUPLER HEAD SHAFT
35		ALL	2*	WASHER – METAL
36		ALL	2*	SPRING – COUPLER CENTERING
37		ALL	2*	WASHER – FIBER
38	690-671M-022	ALL	2	RETAINING CLIP
39	610-8274-119	ALL	2	AIR HOSE – FRONT – ANGLED
40		BURLINGTON SEABOARD	2*	TRUCK SIDE – RIGHT HAND - BLACK
		UP	2*	TRUCK SIDE –RIGHT HAND – SILVER
41		BURLINGTON SEABOARD	2*	TRUCK SIDE – LEFT HAND – BLACK
		UP	2*	TRUCK SIDE – LEFT HAND - SILVER
42	610-8274-550	ALL	2	COIL COUPLER
43	610-8274-118	ALL	2	SCREW – SNOWPLOW MOUNT
44	610-8274-117	BURLINGTON	1	SNOWPLOW – RED
	610-8276-117	SEABOARD	1	SNOWPLOW – BLACK
	610-8278-117	UP	1	SNOWPLOW – GREY
45		ALL	8*	SCREW – TRUCK SIDE MOUNT
46		ALL	2*	SCREW – FRONT PICK UP ROLLER MOUNT
47	610-8274-590	BURLINGTON	1	MOTOR TRUCK COMPLETE –REAR
	610-8276-590	SEABOARD	1	MOTOR TRUCK COMPLETE – REAR
	610-8278-590	UP	1	MOTOR TRUCK COMPLETE – REAR
48	610-8274-570	BURLINGTON	1	MOTOR TRUCK COMPLETE – FRONT
	610-8276-570	SEABOARD	1	MOTOR TRUCK COMPLETE – FRONT
	610-8278-570	UP	1	MOTOR TRUCK COMPLETE - FRONT

*PARTS NOT AVAILABLE

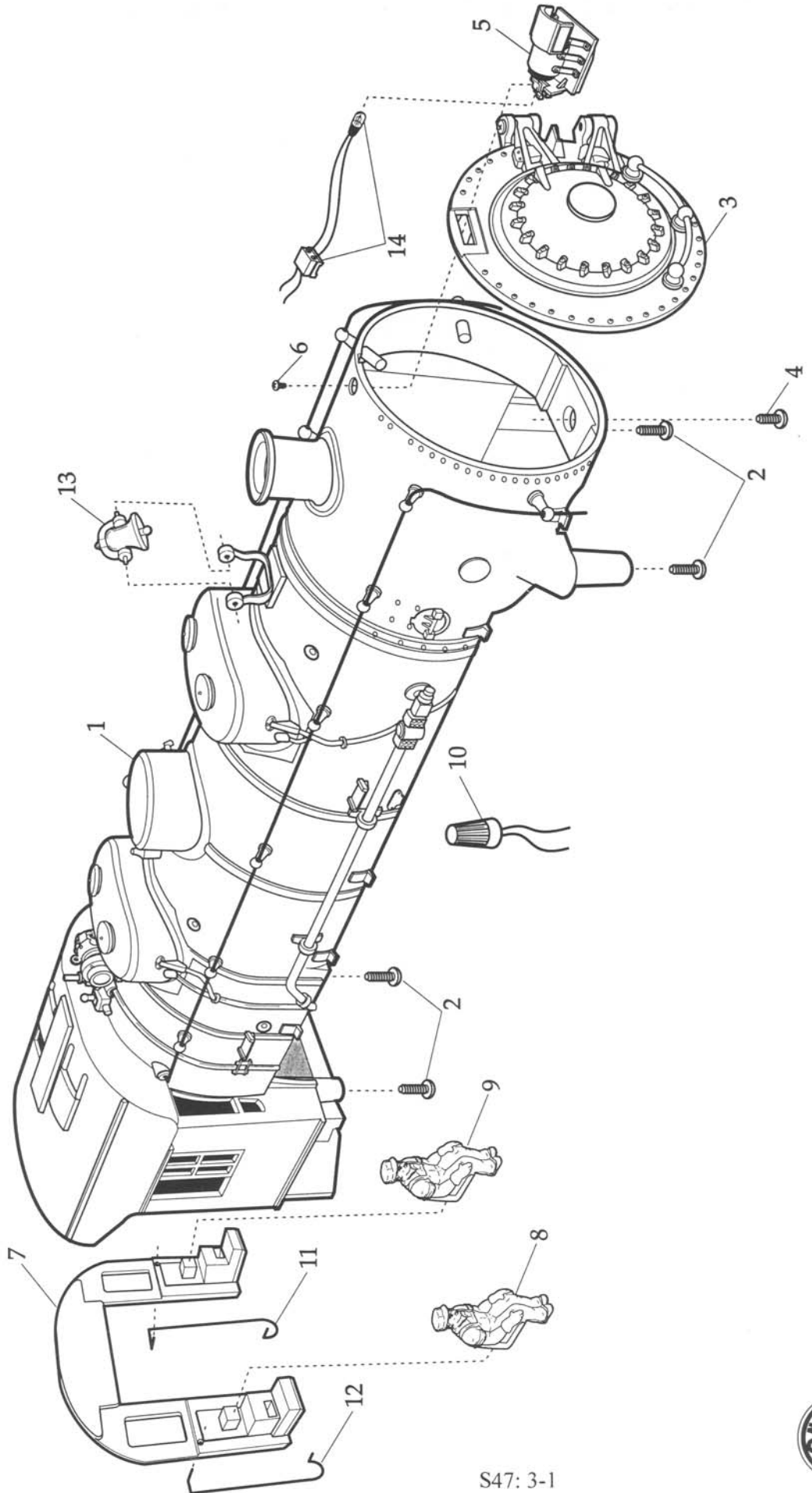


U30C DIESEL WITH COMMAND CONTROL, RAILSOUNDS, AND ODYSSEY SYSTEM PICTORIAL WIRING DIAGRAM



NOTE: Colors of wires may vary. You must trace all wires to verify connections.





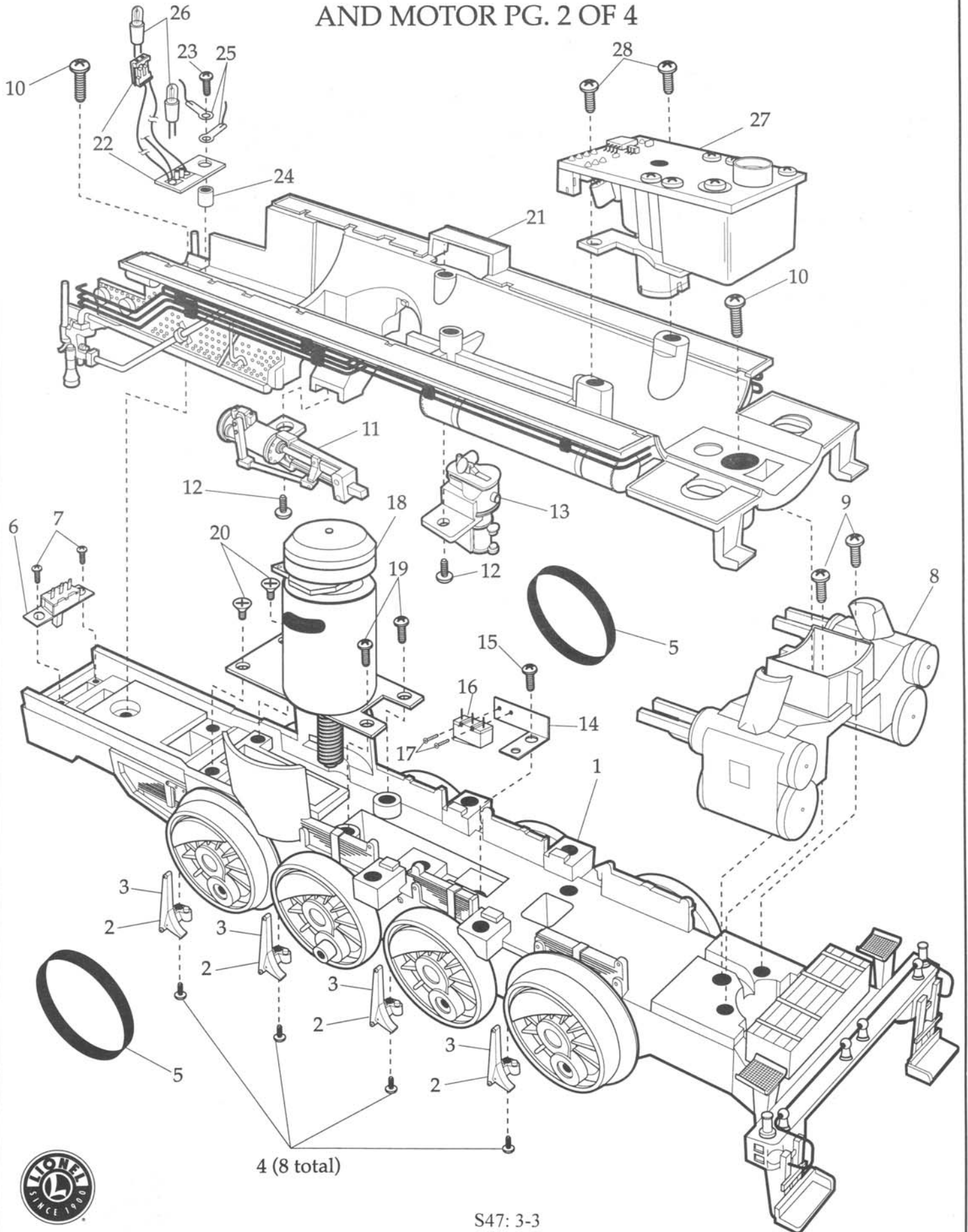
6-38046 GN, 6-38047 N&W, 6-38048 NPR 0-8-0 SWITCHER ENGINE

REF NO	PART NUMBER	ROAD NAME	QUANTITY PER UNIT	DESCRIPTION
1	630-8046-007	GN	1	SHELL GN#815
	630-8047-007	N&W	1	SHELL N&W #266
	630-8048-007	NPR	1	SHELL NPR #303
2		ALL	4*	SCREW/SHELL MOUNT
3		GN	1*	BOILER FRONT GN#815
		N&W	1*	BOILER FRONT N&W #266
		NPR	1*	BOILER FRONT NPR#303
4		ALL	1*	SCREW/BOILER FRONT MOUNT
5		GN	1*	HEADLIGHT HOUSING #815
		N&W	1*	HEADLIGHT HOUSING #266
		NPR	1*	HEADLIGHT HOUSING NPR#303
6		GN	1*	SCREW/HEADLIGHT HOUSING MOUNT
		N&W	1*	SCREW/HEADLIGHT HOUSING MOUNT
		NPR	1*	SCREW/HEADLIGHT HOUSING MOUNT
7	620-8080-044	ALL	1	BULKHEAD/CAB REAR
8		ALL	1*	ENGINEER FIGURE
9		ALL	1*	FIREMAN FIGURE
10	610-6666-022	ALL	2	WIRE NUT
11		ALL	1*	HANDRAIL LEFT HAND- CAB REAR
12		ALL	1*	HANDRAIL RIGHT HAND -CAB REAR
13	630-8026-076	ALL	1	BELL ASSEMBLY
14	620-8029-300	ALL	1	HEAD LIGHT LAMP

*PARTS NOT AVAILABLE



0-8-0 SWITCHER CHASSIS, FRAME, SMOKE UNIT, STEAM CHEST AND MOTOR PG. 2 OF 4



REF NO	PART NUMBER	ROAD NAME	QUANTITY PER UNIT	DESCRIPTION
1		ALL	1*	FRAME ASSEMBLY W/WHEELS
2		ALL	4*	BRAKE SHOE – RIGHT HAND
3		ALL	4*	BRAKE SHOE – LEFT HAND
4		ALL	8*	SCREW-BRAKE SHOE MOUNT
5	620-8080-206	ALL	2	TRACTION TIRE
6		ALL	1*	SWITCH ODYSSEY ON/OFF
7		ALL	2*	SCREW-SWITCH MOUNT
8	620-8080-025	ALL	1	STEAMCHEST
9		ALL	2*	SCREW-STEAMCHEST MOUNT
10		ALL	2*	SCREW- BOILER BOTTOM MOUNT
11		ALL	1*	REVERSER GEAR
12		ALL	1*	SCREW-REVERSER MOUNT
13		ALL	1*	WATER PUMP
14		ALL	1*	CHERRY SWITCH MOUNTING BRACKET
15		ALL	1*	SCREW- SWITCH BRACKET MOUNT
16	610-0401-162	ALL	1	CHERRY SWITCH
17		ALL	2*	SCREW-CHERRY SWITCH MOUNT
18	620-8080-100	ALL	1	MOTOR
19		ALL	2*	SCREW-PANHEAD/MOTOR MOUNT
20		ALL	2*	SCREW-FLATHEAD/MOTOR MOUNT
21	630-8046-003	GN	1	BOILER BOTTOM ASSEMBLY/BLACK
	630-8047-003	N&W	1	BOILER BOTTOM ASSEMBLY W/WHITE STRIPE
		NPR	1*	BOILER BOTTOM ASSEMBLY
22	620-8080-116	ALL	1	PC BOARD/HARNESS-FIREBOX/CAB LIGHT
23		ALL	1*	SCREW-PC BOARD MOUNT
24		ALL	1*	SPACER
25	600-0082-043	ALL	2	SOLDER LUGS
26	610-8082-019	ALL	2	LAMP-FIREBOX CAB LIGHT
27	630-8085-200	ALL	1	SMOKE UNIT*
28		ALL	2	SCREW-SMOKE UNIT MOUNT

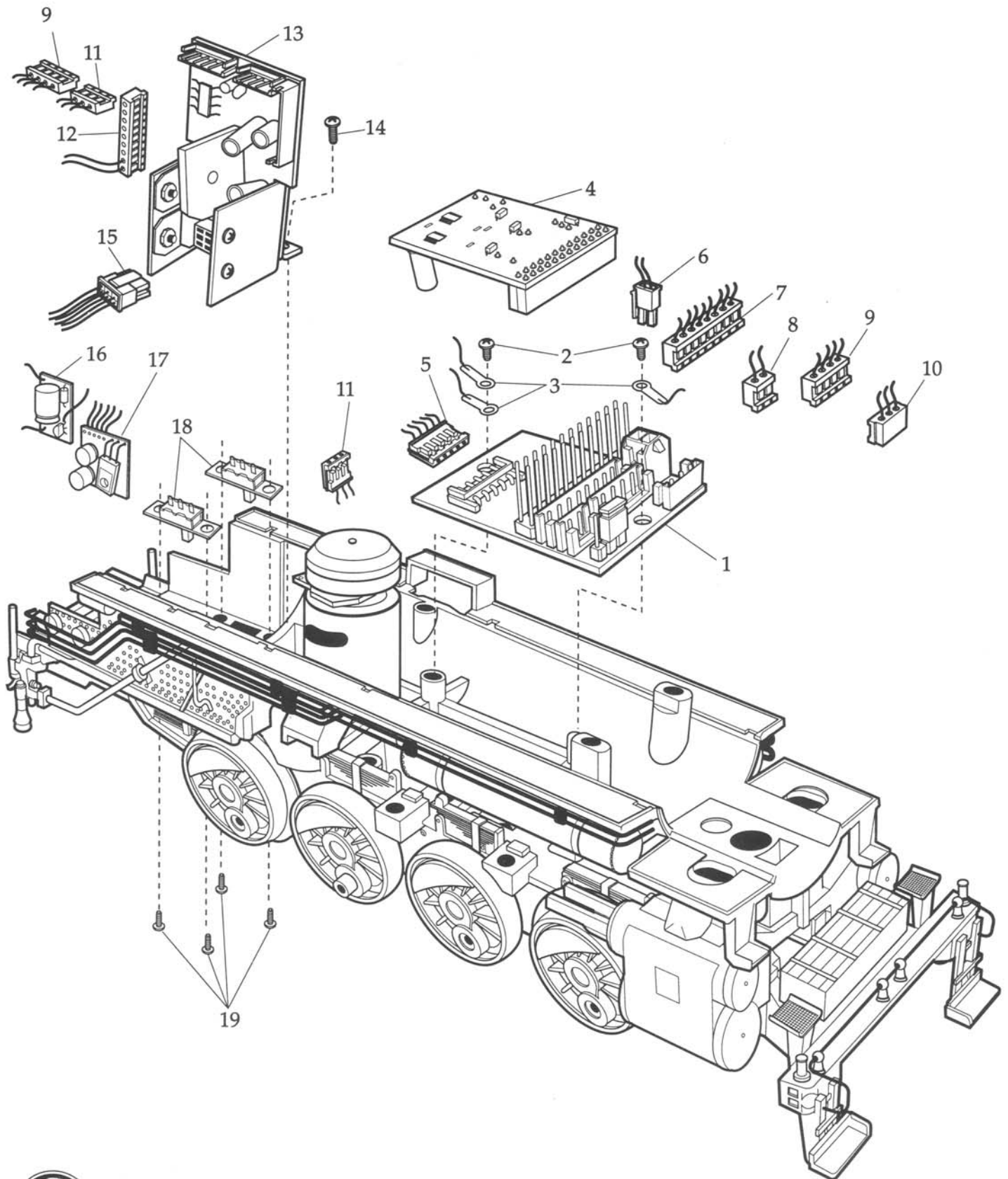
*PARTS NOT AVAILABLE

***CAUTION!** Although parts may appear similar substituting the 630-8085-200 27 OHM smoke unit in applications requiring an 8 OHM smoke unit will result in reduced smoke output.

Further: using an 8 OHM smoke unit in place of this 27 OHM smoke unit will result in overheating and severe product damage.



0-8-0 SWITCHER CIRCUIT BOARDS AND SWITCHES PG. 3 OF 4

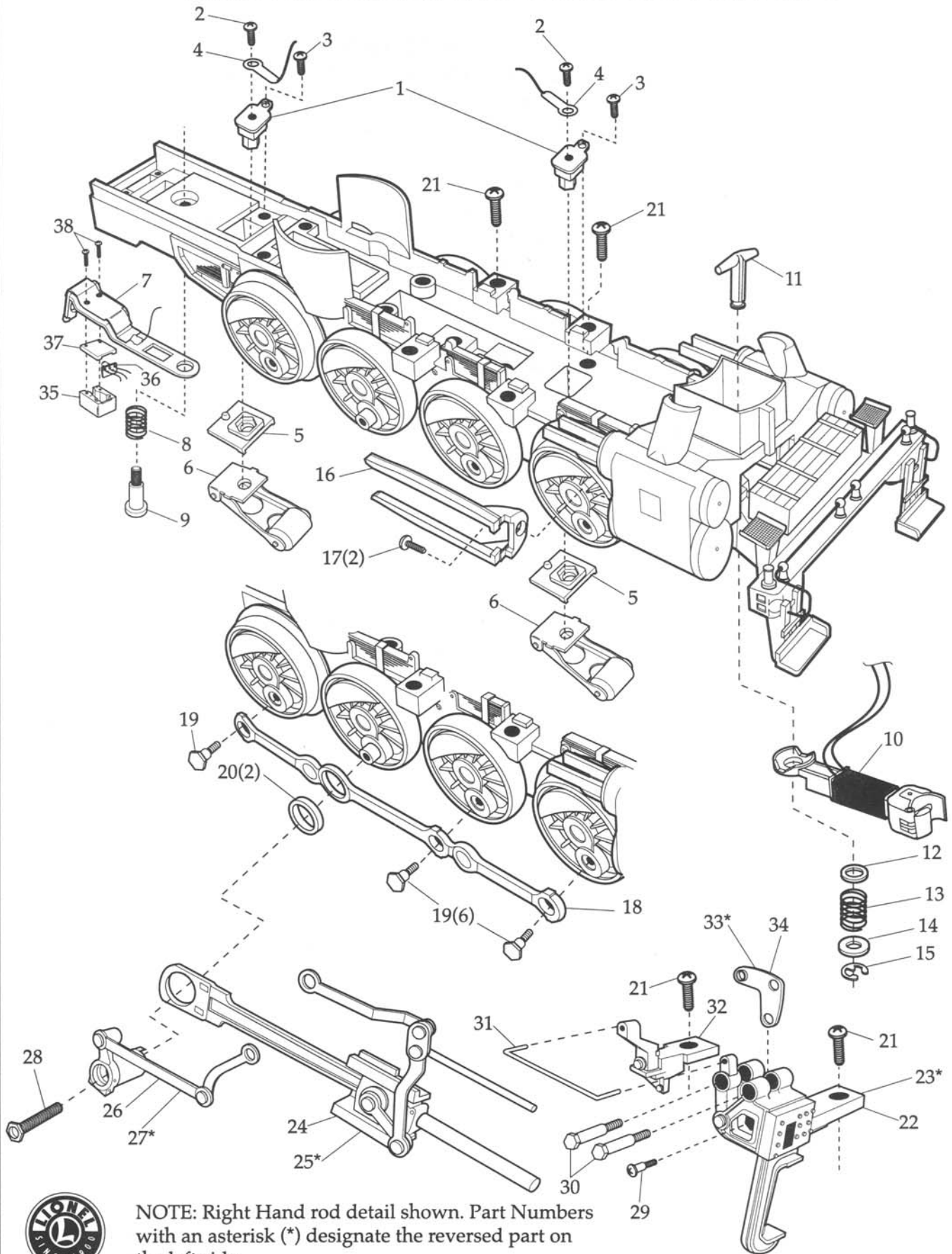


REF NO	PART NUMBER	ROAD NAME	QUANTITY PER UNIT	DESCRIPTION
1	691-PCB1-10F	ALL	1	MOTHER BOARD-ENGINE
2		ALL	2*	SCREW-MOTHER BOARD MOUNT
3	600-0082-043	ALL	3	SOLDER LUG
4	691-PCB1-C08	ALL	1	R2LC COMMAND BOARD
5	620-8080-315	ALL	1	5-PIN SERIAL DATA HARNESS
6	620-8080-308	ALL	1	2-PIN MOLEX HARNESS-GROUND/POWER
7	620-8080-313	ALL	1	8-PIN HARNESS W/HEAD LIGHT CONNECTOR
8	620-8080-312	ALL	1	2-PIN ANTENNA HARNESS
9	620-8080-311	ALL	1	4-PIN DCDRS HARNESS
10	620-8080-314	ALL	1	3-PIN CHERRY SWITCH HARNESS
11	620-8080-310	ALL	1	3-PIN SPEED CONTROL HARNESS
12	620-8080-133	ALL	1	10-PIN DCDRS HARNESS
13	691-DCDS-FM4	ALL	1	DCDRS MOTOR BOARD ODYSSEY
14		ALL	1*	SCREW-DCDRS BOARD MOUNT
15	620-8080-256	ALL	1	6-PIN MOLEX DCDRS HARNESS
16	691-REG5-A00	ALL	1	5 VOLT DC REGULATOR BOARD
17	620-8080-316	ALL	1	8 VOLT AC REGULATOR BOARD/HARNESS
18		ALL	2*	SWITCH-RUN/PROGRAM, SMOKE ON/OFF
19		ALL	4*	SCREW/SWITCH MOUNT

*PARTS NOT AVAILABLE



0-8-0 SWITCHER DRIVE ROD, CROSS HEAD, DRAW BAR, COUPLER AND ROLLER PICK-UP ASSEMBLY PG. 4 OF 4



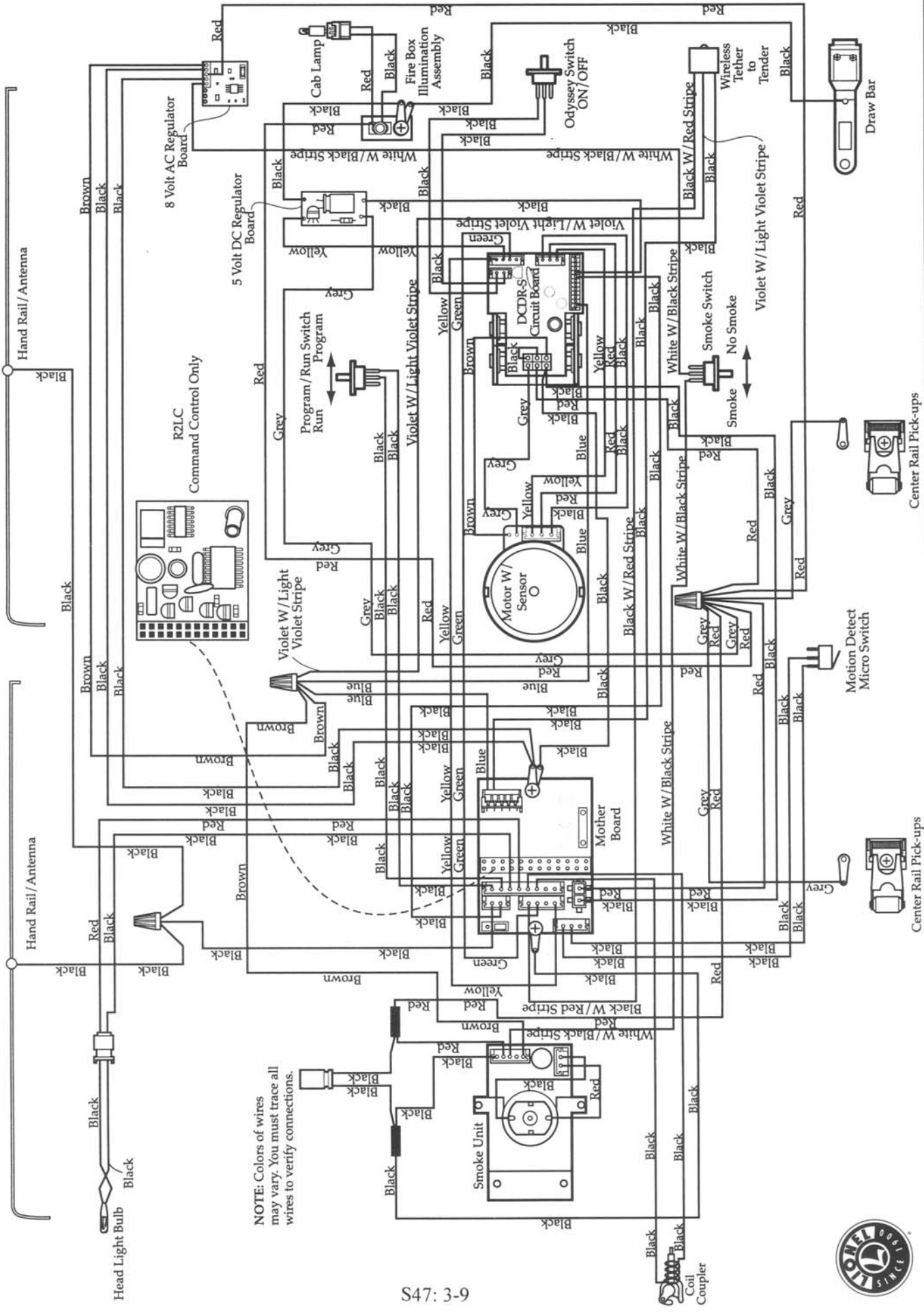
NOTE: Right Hand rod detail shown. Part Numbers with an asterisk (*) designate the reversed part on the left side.

REF NO	PART NUMBER	ROAD NAME	QUANTITY		DESCRIPTION
			PER UNIT		
1		ALL	2*		INSULATOR BLOCK /PICK UP ROLLER
2		ALL	2*		SCREW-LUG MOUNT
3		ALL	2*		SCREW-INSULATOR BLOCK MOUNT
4	600-0082-043	ALL	2		SOLDER LUG
5	620-8085-170	ALL	2		PICK UP ROLLER INSULATOR
6	630-8024-150	ALL	2		PICK UP ROLLER ASSEMBLY
7		ALL	1*		DRAW BAR
8		ALL	1*		SPRING/DRAW BAR SUPPORT
9		ALL	1*		SHOULDER SCREW/DRAWBAR MOUNT
10	610-8274-550	ALL	1		COIL COUPLER ASSEMBLY
11		ALL	1*		COUPLER HEAD SHAFT
12		ALL	1*		WASHER
13		ALL	1*		CENTERING SPRING
14		ALL	1*		WASHER
15	690-671M-023	ALL	1		RETAINING CLIP
16	620-8080-242	ALL	2		CROSSHEAD GUIDE LEFT AND RIGHT
17	620-8080-244	ALL	2		SCREW-CROSSHEAD GUIDE MOUNT
18		ALL	2*		SIDE ROD LEFT AND RIGHT
19		ALL	6*		SIDE ROD MOUNTING SCREW
20		ALL	2*		DRIVE ROD SPACER
21		ALL	4*		SCREW-HANGER MOUNT
22	620-8080-155	ALL	1		VALVE HANGER RIGHT HAND
23	620-8080-156	ALL	1		VALVE HANGER LEFT HAND
24		ALL	1*		SIDE ROD/CROSSHEAD ASSEMBLY RIGHT HAND
25		ALL	1*		SIDE ROD/CROSSHEAD ASSEMBLY LEFT HAND
26		ALL	1*		ECCENTRIC CRANK/ROD ASSEMBLY RIGHT HAND
27		ALL	1*		ECCENTRIC CRANK/ROD ASSEMBLY LEFT HAND
28		ALL	2*		ECCENTRIC CRANK SCREW
29		ALL	2*		SCREW-VALVE GEAR MOUNT
30		ALL	4*		BOLT/VALVE GEAR MOUNT
31		ALL	2*		SUPPORT ROD
32	620-8080-157	ALL	2		SUPPORT HANGER RIGHT AND LEFT
33		ALL	1*		VALVE GEAR BRACKET-RIGHT HAND
34		ALL	1*		VALVE GEAR BRACKET-LEFT HAND
35	630-8029-085	ALL	1		IR HOUSING- LOWER
36	691-IREG-A00	ALL	1		IR TRANSMITTER BOARD
37	630-8029-095	ALL	1		IR HOUSING-UPPER
38		ALL	2*		SCREW-IR HOUSING MOUNT

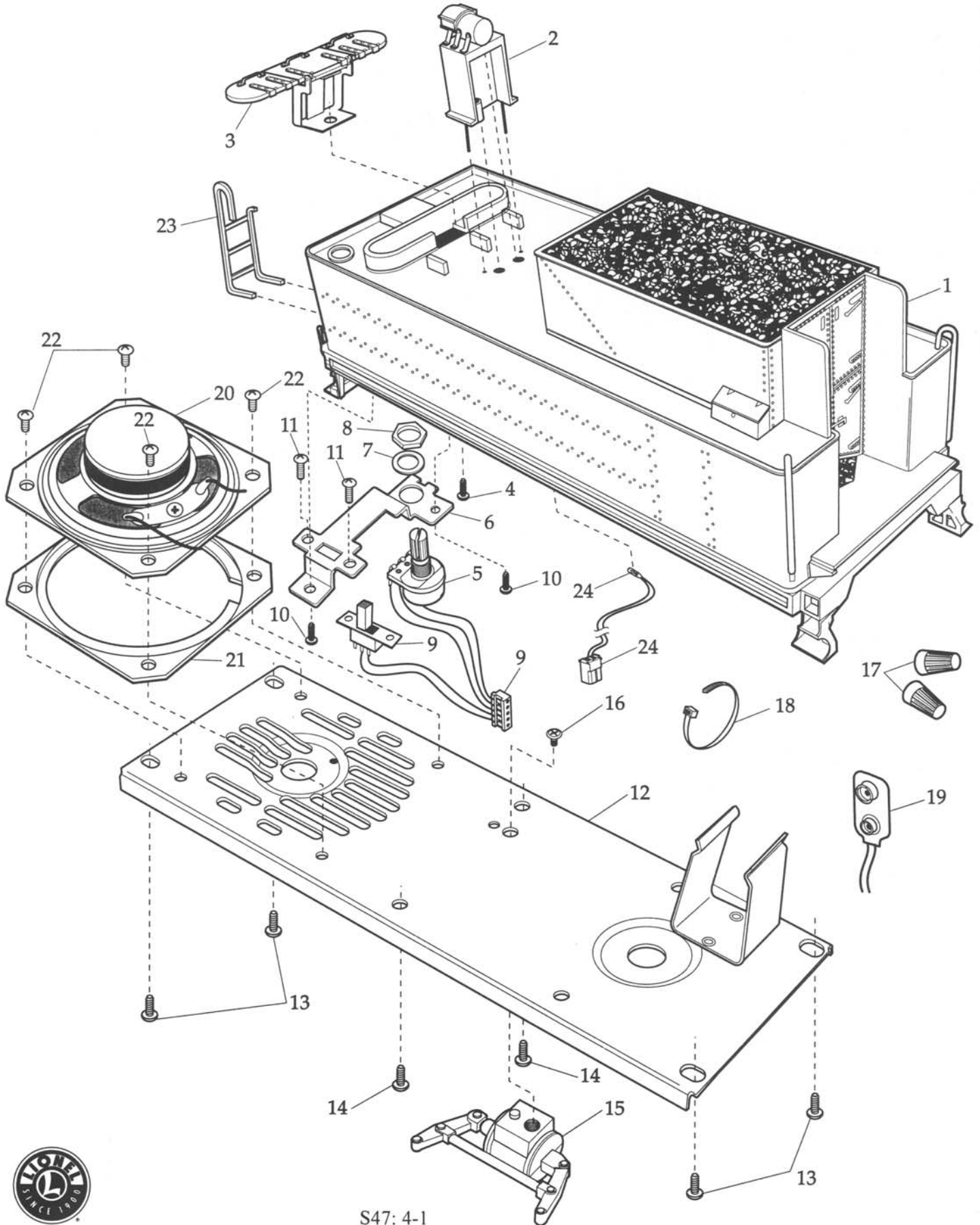
*PARTS NOT AVAILABLE



0-8-0 SWITCHER ENGINE WITH COMMAND CONTROL, RAILSOUNDS, AND ODYSSEY SYSTEM PICTORIAL WIRING DIAGRAM



6-38046-GN, 6-38047-N&W, 6-38048-NPR TENDER FOR 0-8-0 SWITCHER
PG. 1 OF 2



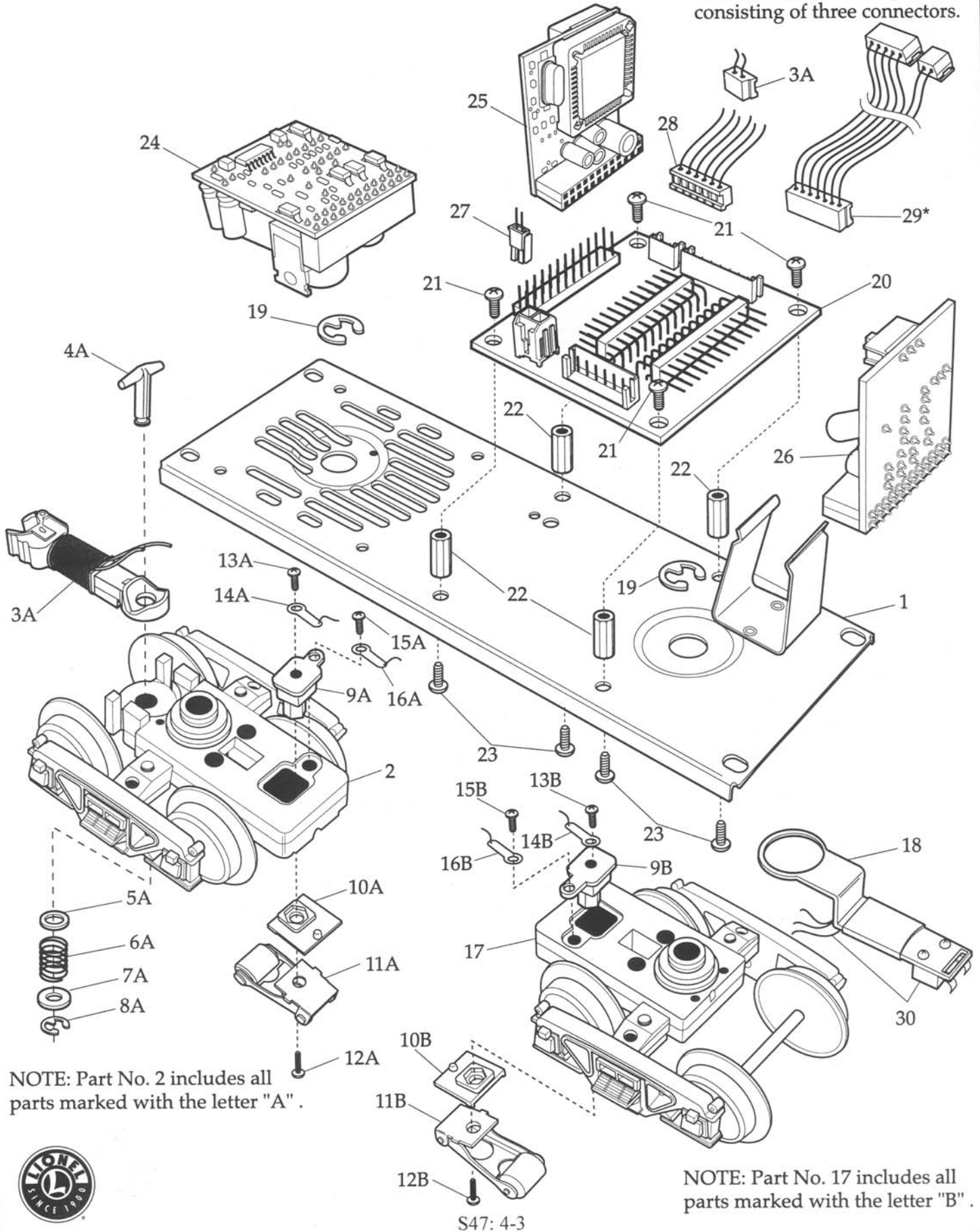
REF NO	PART NUMBER	ROAD NAME	QUANTITY		DESCRIPTION
			PER UNIT		
1	693-8046-T07	GN	1		SHELL COMPLETE #815
	693-8047-T07	N&W	1		SHELL COMPLETE #266
	693-8048-T07	MPR	1		SHELL COMPLETE #303
2	693-8046-T54	GN	1		BACK UP LIGHT HOUSING #815
		N&W, NPR	1*		BACK UP LIGHT HOUSING
3		ALL	1*		HATCH ASSEMBLY
4		ALL	1*		SCREW HATCH ASSEMBLY MOUNT
5	691-8040-T41	ALL	1		VOLUME CONTROL POTENTIOMETER
6		ALL	1*		BRACKET-VOLUME CONTROL MOUNT
7	610-8007-170	ALL	1		WASHER/POTENTIOMETER MOUNT
8	610-8007-180	ALL	1		NUT/POTENTIOMETER MOUNT
9	692-8080-T70	ALL	1		VOLUME/RAIL SOUND SWITCH HARNESS W/SWITCH
10		ALL	2*		SCREW/BRACKET MOUNT
11		ALL	2*		SCREW/ RS/SS SWITCH MOUNT
12	692-8080-T09	ALL	1		FRAME W/BATTERY CLIP
13		ALL	4*		SCREW/SHELL MOUNT
14		ALL	4*		SCREW/STANDOFF MOUNT
15	693-8035-T23	ALL	1		BRAKE CYLINDER
16		ALL	1*		SCREW/BRAKE CYLINDER MOUNT
17	610-6666-022	ALL	2		WIRE NUT
18	610-8301-055	ALL	1		WIRE TIE
19	692-8080-T30	ALL	1		9VOLT BATTERY/SPEAKER HARNESS
20	610-8042-536	ALL	1		SPEAKER/ 2 -1/4" SQUARE
21		ALL	1*		SPEAKER SPACER
22		ALL	4*		SCREW/SPEAKER MOUNT
23	692-8080-T25	ALL	1		LADDER/REAR
24	620-8029-300	ALL	1		BACK UP LAMP

*PARTS NOT AVAILABLE



TENDER FOR 0-8-0 SWITCHER PG. 2 OF 2

*Part No. 29 is a wiring harness consisting of three connectors.



NOTE: Part No. 2 includes all parts marked with the letter "A".

NOTE: Part No. 17 includes all parts marked with the letter "B".

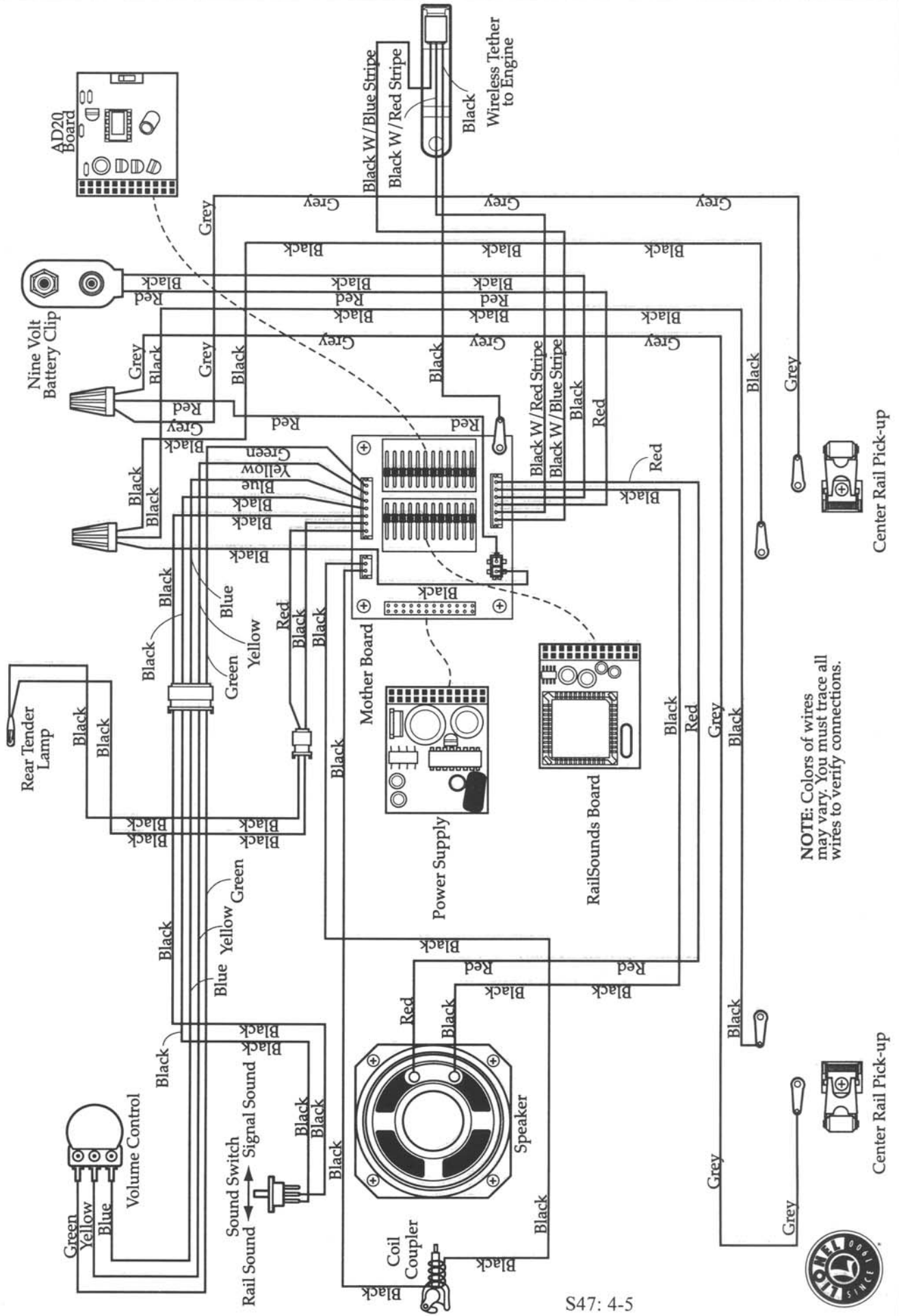


REF NO	PART NUMBER	ROAD NAME	QUANTITY PER UNIT	DESCRIPTION
1	692-8080-T09	ALL	1	FRAMEW/ BATTERY CLIP
2	692-8080-T60	ALL	1	REAR TRUCK ASSEMBLY
3	610-8274-550	ALL	1	COIL COUPLER
4		ALL	1*	COUPLER HEAD SHAFT
5		ALL	1*	WASHER
6		ALL	1*	SPRING
7		ALL	1*	FIBER WASHER
8	690-671M-023	ALL	1	RETAINING RING
9		ALL	2*	PICK UP ROLLER INSULATOR TOP INSERT
10		ALL	2*	PICK UP ROLLER INSULATOR BOTTOM
11	630-8053-150	ALL	2	PICK UP ROLLER ASSEMBLY
12		ALL	2*	SCREW/PICK UP ROLLER MOUNT
13		ALL	2*	SCREW/INSULATOR MOUNT
14	692-8080-T32	ALL	2	GROUND WIRE ASSEMBLY
15		ALL	2*	SCREW/PICK UP ROLLER HARNESS MOUNT
16	692-8080-T33	ALL	2	PICK UP ROLLER HARNESS
17	692-8080-T50	ALL	1	FRONT TRUCK ASSEMBLY
18	692-8080-T22	ALL	1	DRAW BAR W/IR RECEIVER ASSEMBLY
19	692-8080-T91	ALL	2	RETAINING CLIP/TRUCK MOUNT
20	691-MB00-02A	ALL	1	MOTHER BOARD
21		ALL	4*	SCREW/MOTHER BOARD MOUNT
22		ALL	4*	STANDOFF/ MOTHER BOARD MOUNT
23		ALL	4*	SCREW STAND OFF MOUNT
24	691-PCB1-040	ALL	1	RAILSOUND -4 POWER SUPPLY BOARD
25	691-RS4E-007	GN	1	RS4E AUDIO BOARD GN #815
	691-RS4E-008	N&W	1	RS4E AUDIO BOARD N&W #266
	691-RS4E-009	NKP	1	RS4E AUDIO BOARD NKP #303
26	691-PCB1-039	ALL	1	AD20A BOARD
27	620-8080-308	ALL	1	2 PIN MOLEX HARNESS GROUND/POWER
28	692-8080-T30	ALL	1	9VOLT BATTERY/SPEAKER HARNESS
29	692-8080-T71	ALL	1	HARNESS- MOTHER BOARD/VOLUME -RAIL SOUND-BACK UP LAMP
30	610-8056-083	ALL	1	HARNESS/ IR RECEIVER BOARD

*PARTS NOT AVAILABLE



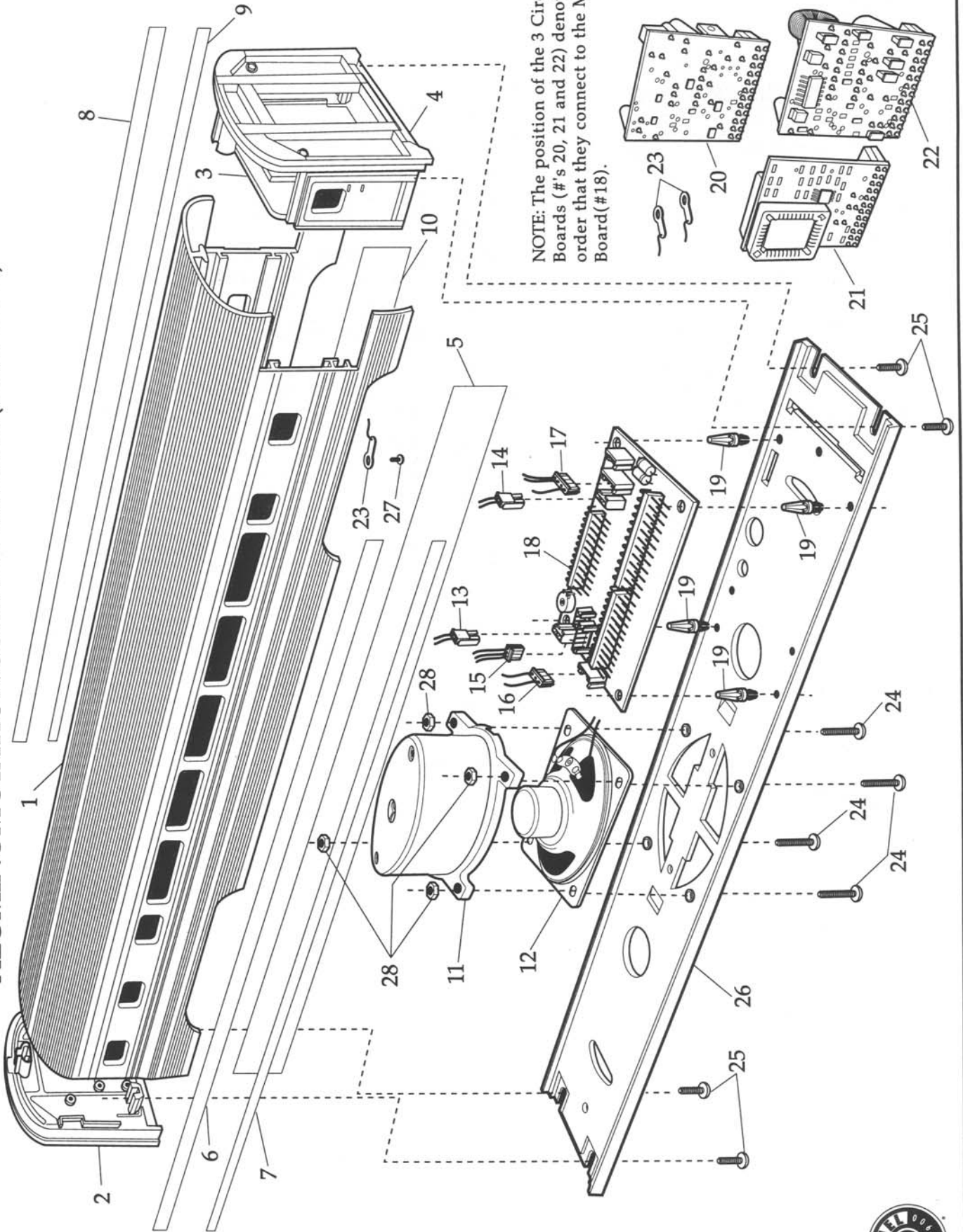
TENDER FOR 0-8-0 SWITCHER ENGINE WITH COMMAND CONTROL, RAILSOUNDS, AND ODYSSEY SYSTEM PICTORIAL WIRING DIAGRAM



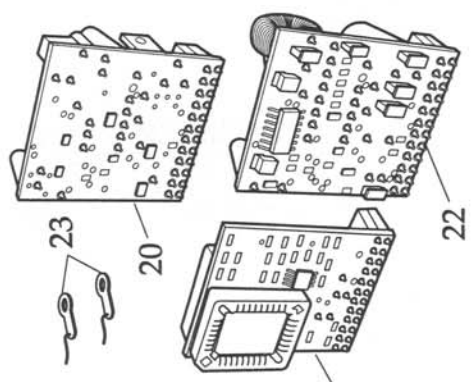
NOTE: Colors of wires may vary. You must trace all wires to verify connections.



6-39197-CANADIAN PACIFIC, 6-39198-PENNSYLVANIA CONGRESSIONAL
 ALUMINUM STATION SOUNDS COACH (PG. 1 OF 2)



NOTE: The position of the 3 Circuit Boards (#'s 20, 21 and 22) denote the order that they connect to the Mother Board (#18).



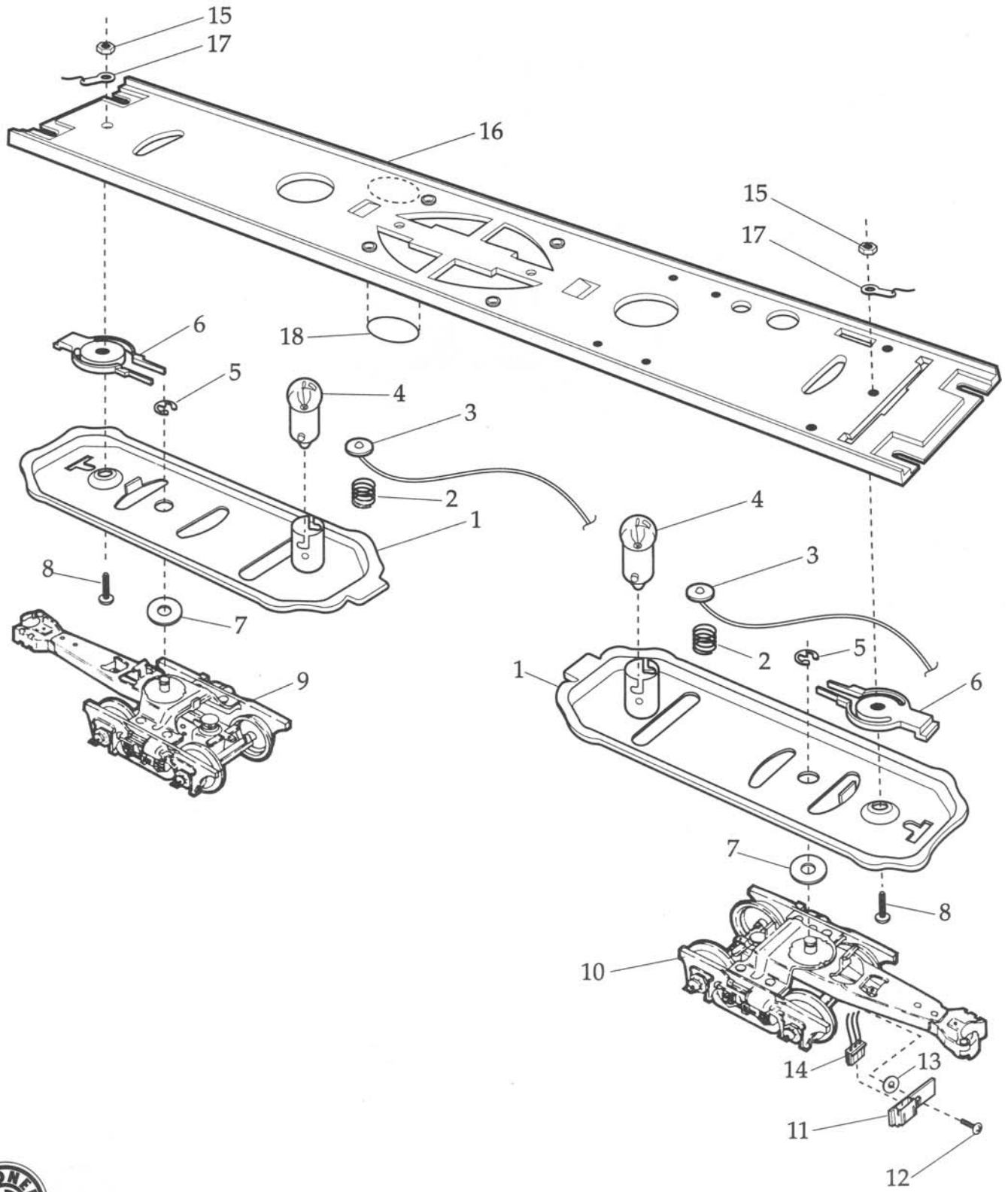
6-39197 CANADIAN PACIFIC, 6-39198 PENNSYLVANIA CONGRESSIONAL
ALUMINUM STATION SOUNDS COACH (PG. 1 OF 2)

REF NO	PART NUMBER	ROAD NAME	QUANTITY PER UNIT	DESCRIPTION
1	630-9197-007	CP	1*	BODY-COACH
	630-9198-007	PENNSY	1*	BODY-COACH
2		ALL	1*	PLAIN END SILVER
3		ALL	1*	BULKHEAD SILVER
4		ALL	1*	VESTIBULE SILVER
5	630-9197-023	CP	1*	WINDOW STRIP R.H. CP#2555
	630-9198-023	PENNSY	1*	WINDOW STRIP R.H. PENNSY #2545
6	620-9142-010	CP	1	FOIL STRIP R.H. "CANADIAN PACIFIC"
		PENNSY	1	FOIL STRIP R.H. "PENNSYLVANIA"
7		CP	1*	FOIL STRIP R.H. "JARVIS MANOR"
		PENNSY	1*	FOIL STRIP R.H. "JOHNS HOPKINS"
8	610-9142-020	CP	1	FOIL STRIP L.H. "CANADIAN PACIFIC"
		PENNSY	1*	FOIL STRIP L.H. "PENNSYLVANIA"
9		CP	1*	FOIL STRIP L.H. "JARVIS MANOR"
		PENNSY	1*	FOIL STRIP L.H. "JOHN HOPKINS"
10	630-9197-024	CP	1*	WINDOW STRIP L.H. CP#2555
	630-9198-024	PENNSY	1*	WINDOW STRIP L.H. PENNSY #2545
11	610-8321-155	ALL	1	OVAL SPEAKER BOX
12	610-8056-536	ALL	1	SPEAKER - OVAL -8 OHM
13		ALL	1*	2 PIN MOLEX - PICK UP HARNESS REAR TRUCK
14		ALL	1*	2 PIN MOLEX - PICK UP HARNESS FRONT TRUCK
15	630-9104-166	ALL	1	HARNESS, SPEED SENSOR 6
16		ALL	1*	3 PIN - 2 WIRE SPEAKER HARNESS
17		ALL	1*	4 - PIN LAMP/ANTENNA HARNESS
18	691-PCB1-004	ALL	1	MOTHER BOARD
19	620-6710-113	ALL	4	STANDOFF
20	691-R2LC-008	ALL	1	R2LC COMMAND BOARD
21	691-RS40-020	CP	1	STATIONSOUNDS BOARD CP
	691-RS40-021	PENNSY	1	STATIONSOUNDS BOARD PENNSY
22	691-PCB1-040	ALL	1	RAILSOUNDS POWER SUPPLY BOARD
23	600-0082-043	ALL	3	SOLDER LUG
24		ALL	4*	SCREWS SPEAKER MOUNT
25		ALL	4*	SCREWS FRAME MOUNT
26	630-9104-005	ALL	1*	FRAME
27		ALL	1*	SCREW ANTENNA WIRE MOUNT
28		ALL	4*	NUT - SPEAKER MOUNT

*PARTS NOT AVAILABLE



6-39197-CANADIAN PACIFIC, 6-39198-PENNSYLVANIA CONGRESSIONAL ALUMINUM STATION SOUNDS COACH (PG. 2 OF 2)



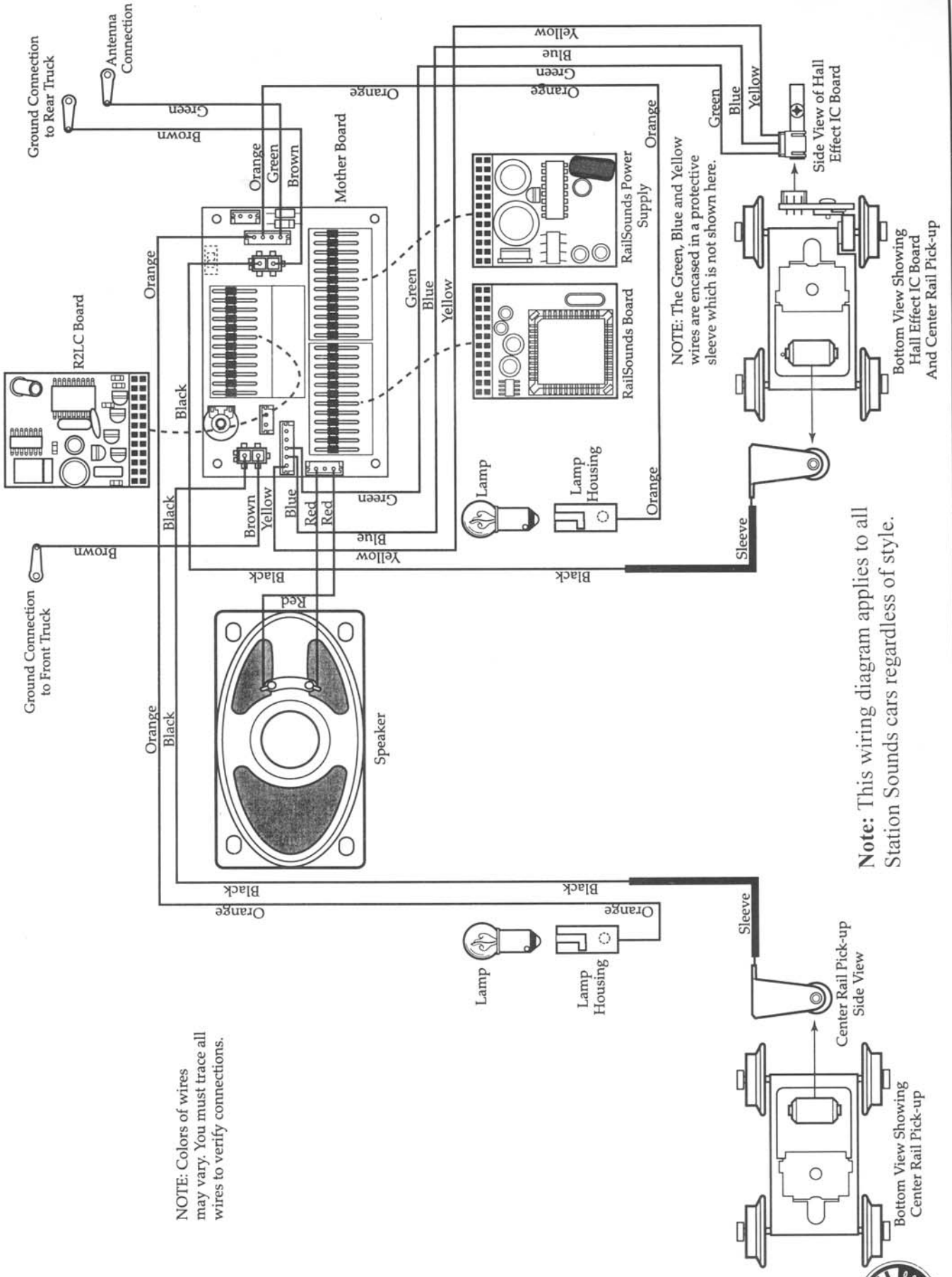
6-39197 CANADIAN PACIF, 6-39198 PENNSYLVANIA CONGRESSIONAL
ALUMINUM STATION SOUNDS COACH (PG. 2 OF 2)

REF NO	PART NUMBER	ROAD NAME	QUANTITY PER UNIT	DESCRIPTION
1	610-9123-050	ALL	2	CHANNEL & SOCKET ASSEMBLY
2	600-2145-091	ALL	2	SPRING - LAMP SOCKET
3	610-9015-050	ALL	2	WASHER, EYELET & LEAD ASSEMBLY
4	610-9165-300	ALL	2	BULB, 18 VOLT 200MA LOW PROFILE
5	690-671M-022	ALL	2	RETAINING RING
6	600-9589-065	ALL	2	CENTERING SPRING
7	600-1063-041	ALL	2	WASHER .032 THK
8		ALL	2*	SCREW CHANNEL MOUNT
9	610-9173-100	ALL	1	COUPLER TRUCK W/PICK-UP ASSEMBLY
10	630-9104-100	ALL	1*	COUPLER TRUCK W/ PICK-UP & SENSOR
11	691-PCB1-096	ALL	1	SPEED SENSOR/ CONNECTOR CIRCUIT BOARD
12		ALL	1*	SCREW SENSOR BOARD MOUNT
13		ALL	1*	INSULATED PLASTIC WASHER
14	630-9104-166	ALL	1	HARNESS SPEED SENSOR 6"
15		ALL	2*	NUT CHANNEL MOUNT
16	630-9104-005	ALL	1*	FRAME
17	600-0082-043	ALL	2	SOLDER LUG
18	610-8583-055	ALL	1	POST WAR PLAQUE

*PARTS NOT AVAILABLE



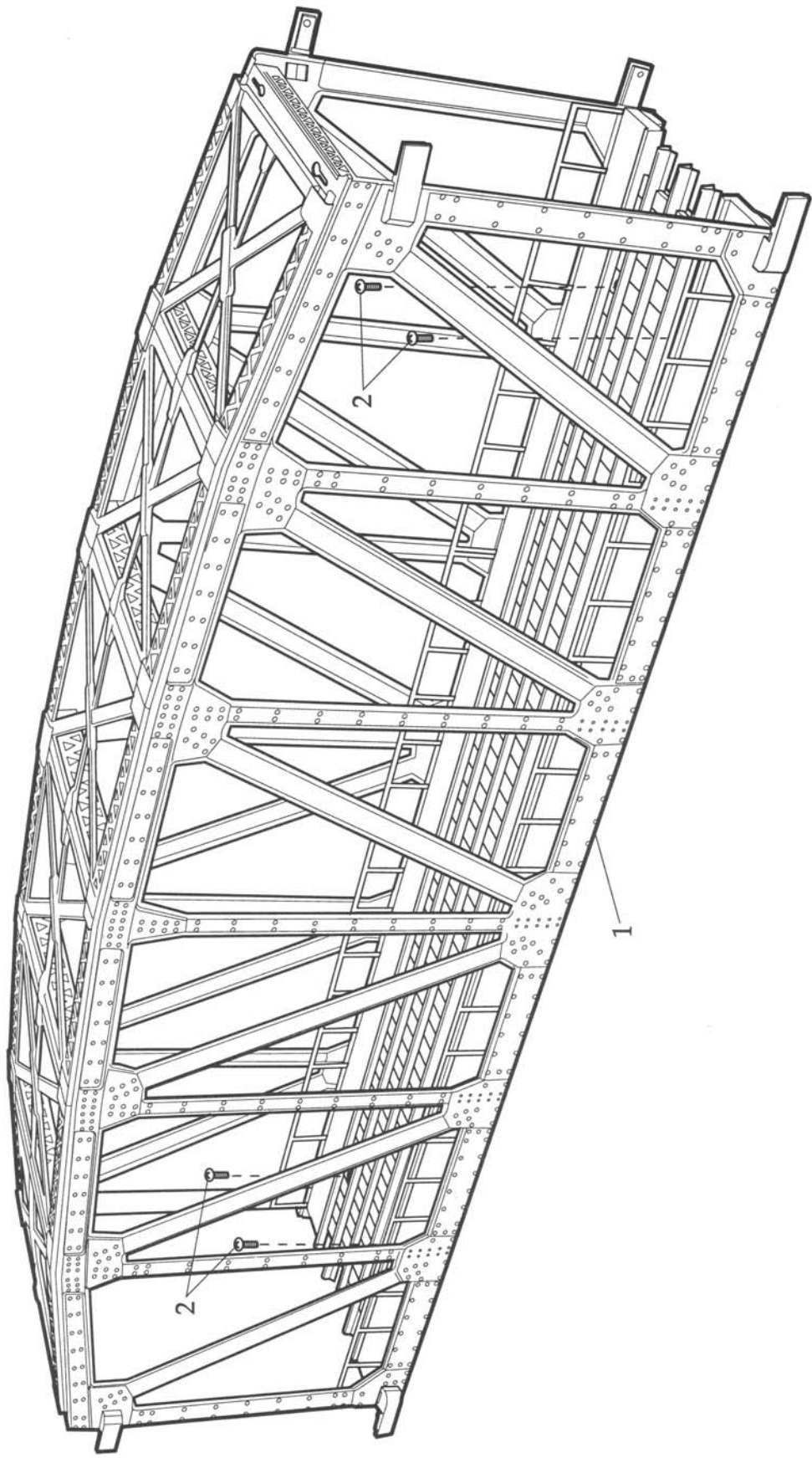
6-39197-CANADIAN PACIFIC, 6-39198-PENNSYLVANIA CONGRESSIONAL ALUMINUM STATION SOUNDS COACH WIRING DIAGRAM



Note: This wiring diagram applies to all Station Sounds cars regardless of style.



6-14167 # 213 LIFT BRIDGE CENTER SECTION ASSEMBLY PAGE 1 OF 2



S47: 14-1



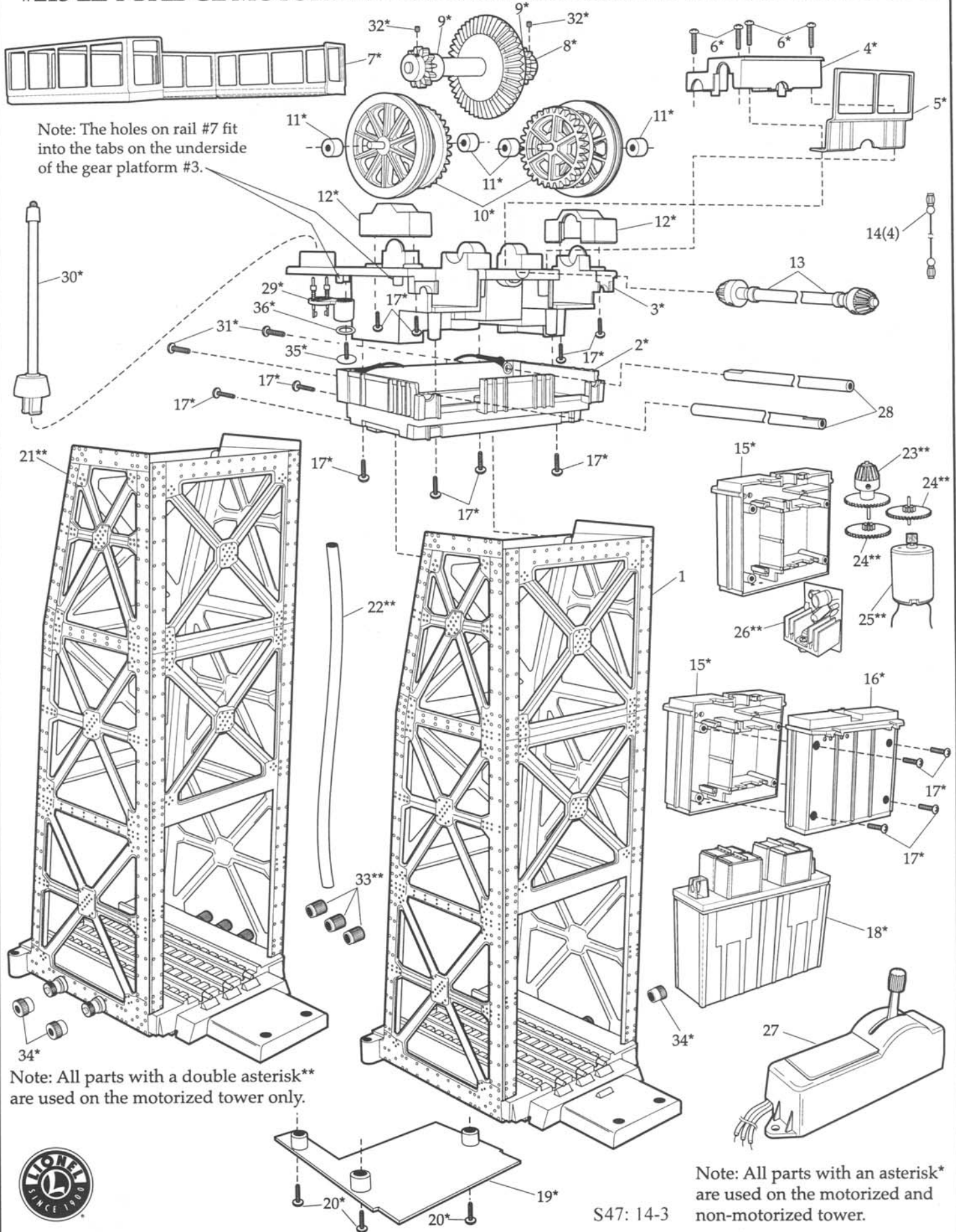
6-14167 #213 LIFT BRIDGE CENTER SECTION

REF NO	PART NUMBER	ROAD NAME	QUANTITY PER UNIT	DESCRIPTION
1			1*	CENTER SPAN SECTION
2			4*	SHIPPING SCREWS

*PARTS NOT AVAILABLE



#213 LIFT BRIDGE MOTORIZED AND NON-MOTORIZED TOWERS PAGE 2 OF 2



S47: 14-3

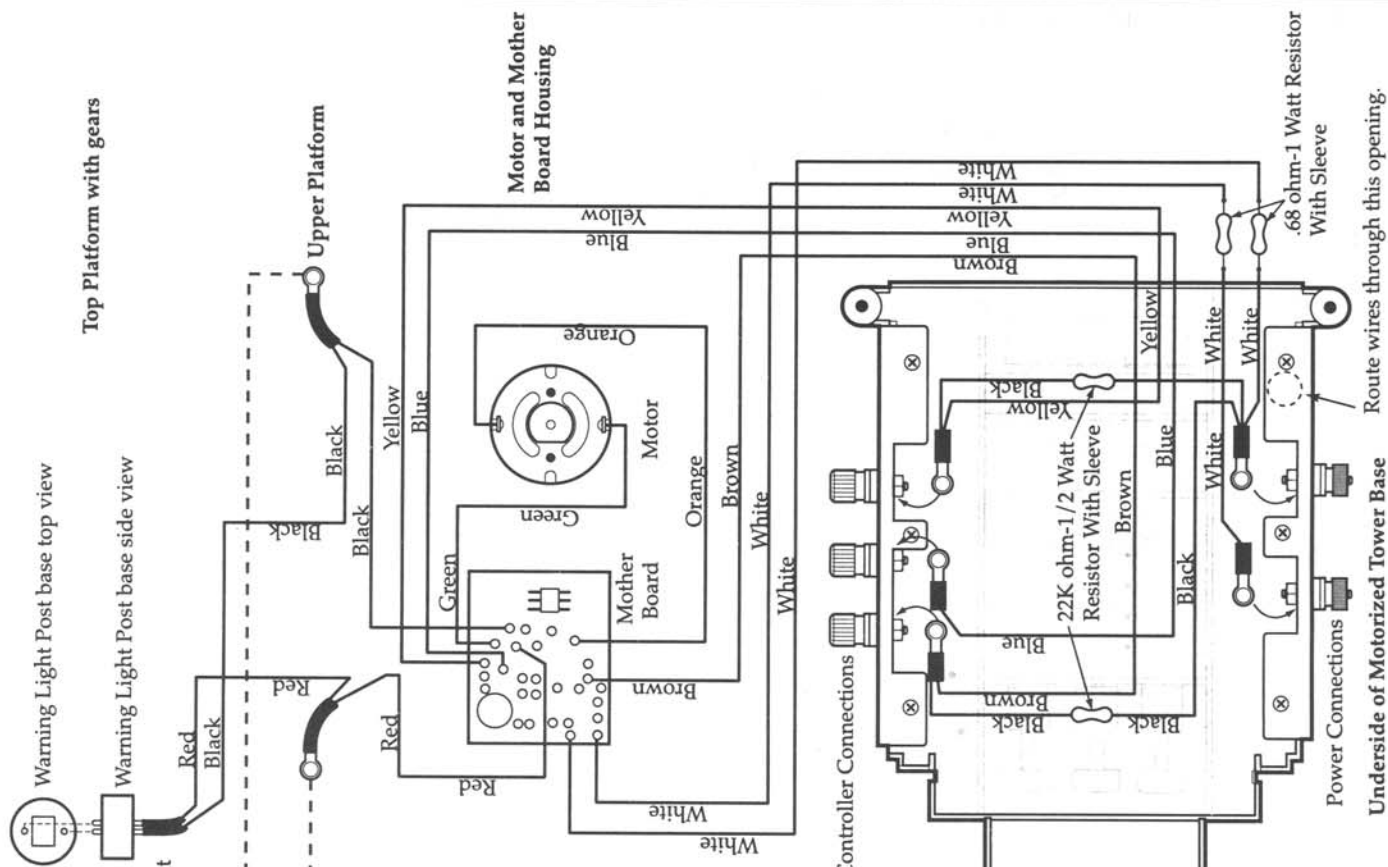
6-14167 #213 LIFT BRIDGE

REF NO	PART NUMBER	ROAD NAME	QUANTITY PER UNIT	DESCRIPTION
1			1*	TOWER ASSEMBLY -NON MOTORIZED
2			2*	TOWER PLATFORM- BOTTOM HALF
3			2*	TOWER PLATFORM-TOP HALF
4			2*	BEARING CAP- INNER
5			2*	HANDRAIL - SHORT
6	610-4167-081		8	SCREW-INNER BEARING CAP MOUNT
7			2*	HANDRAIL-LONG
8	610-4167-024		2	DRIVE GEAR ASSEMBLY
9	610-4167-025		4	DRIVE GEAR BEARING
10	610-4167-026		4	CABLE PULLEY/GEAR ASSEMBLY
11	610-4167-027		8	BEARING-CABLE PULLEY/GEAR ASSEMBLY
12	610-4167-031		4	BEARING CAP-OUTER-CABLE PULLEY
13	610-4167-030		1	DRIVE SHAFT W/(2) BEVEL GEARS
14	610-4167-060		4	LIFTING CABLE ASSEMBLY
15			2*	GEAR BOX CASE HALF- PLAIN
16			2*	GEAR BOX CASE HALF W/RECESSED SCREW HOLES
17	610-4167-080		36	SCREW- MAIN ASSEMBLY
18	610-4167-061		2	COUNTER WEIGHT
19			2*	TOWER BASE PLATE
20			6*	SCREW-BASE PLATE MOUNT
21			1*	TOWER ASSEMBLY-MOTORIZED
22			1*	WIRING SLEEVE
23	610-4167-028		1	BEVELED DRIVE GEAR ASSEMBLY -INCL 1 REF #24
24	610-4167-029		2	INTERMEDIATE GEAR
25	610-4167-100		1	MOTOR W/PINION GEAR
26	610-4167-110		1	LED/MOTOR CIRCUIT BOARD
27			1*	CONTROLLER (USE 600-5122-200)
28			2*	SUPPORT ROD
29	610-4167-311		2	LED POST SOCKET ASSEMBLY
30	610-4167-310		2	WARNING LED POST
31			4*	SCREW-SUPPORT ROD MOUNT
32	610-4167-023		9	SET SCREW-GEAR MOUNT
33	610-4167-035		3	BINDING POST NUT/CONTROLLER TERMINAL
34			3*	BINDING POST/POWER (USE REF #33)
35			2*	SCREW/LED POST SOCKET MOUNT
36			2*	WASHER/LED POST SOCKET MOUNT

*PARTS NOT AVAILABLE



6-14167 #213 LIFT BRIDGE PICTORIAL WIRING DIAGRAM



NOTE: Power for non-motorized tower warning light carried thru the two top outside, black support rods.

NOTE: The wires in the base of the Motorized Tower are routed through an opening in the base and encased in a protective sleeve. These wires are secured by tabs against the inner side of the tower to the motor housing and upper platform. The wires in this diagram are shown separated for better clarity.

