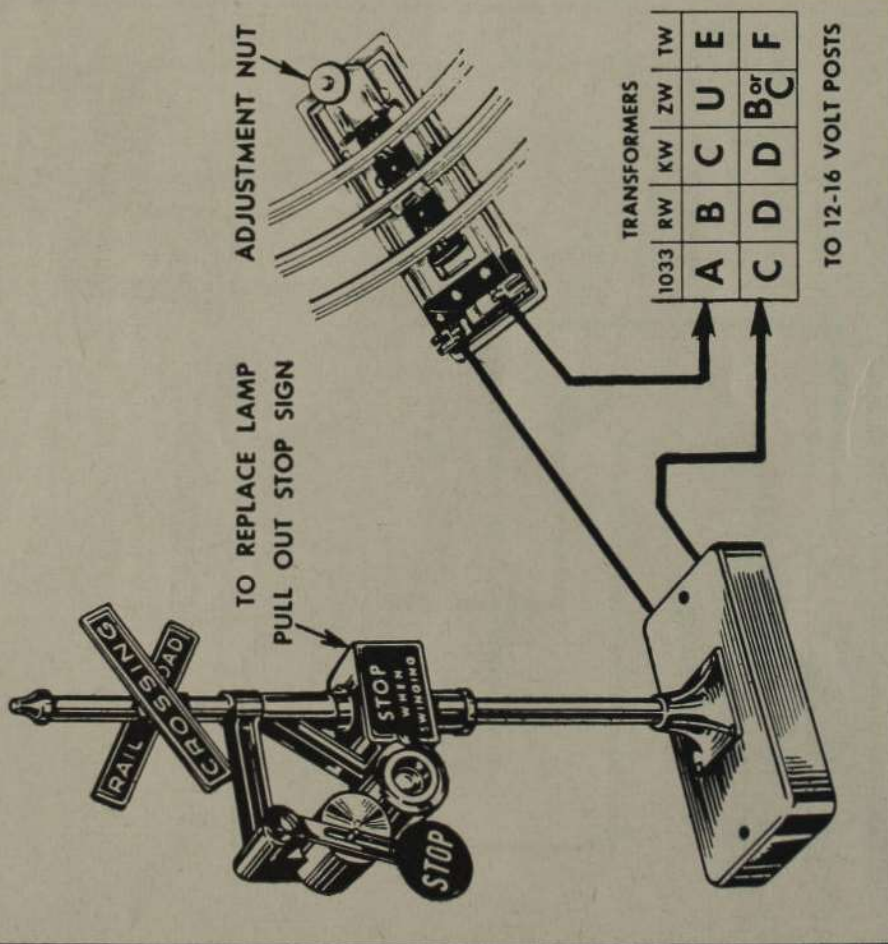


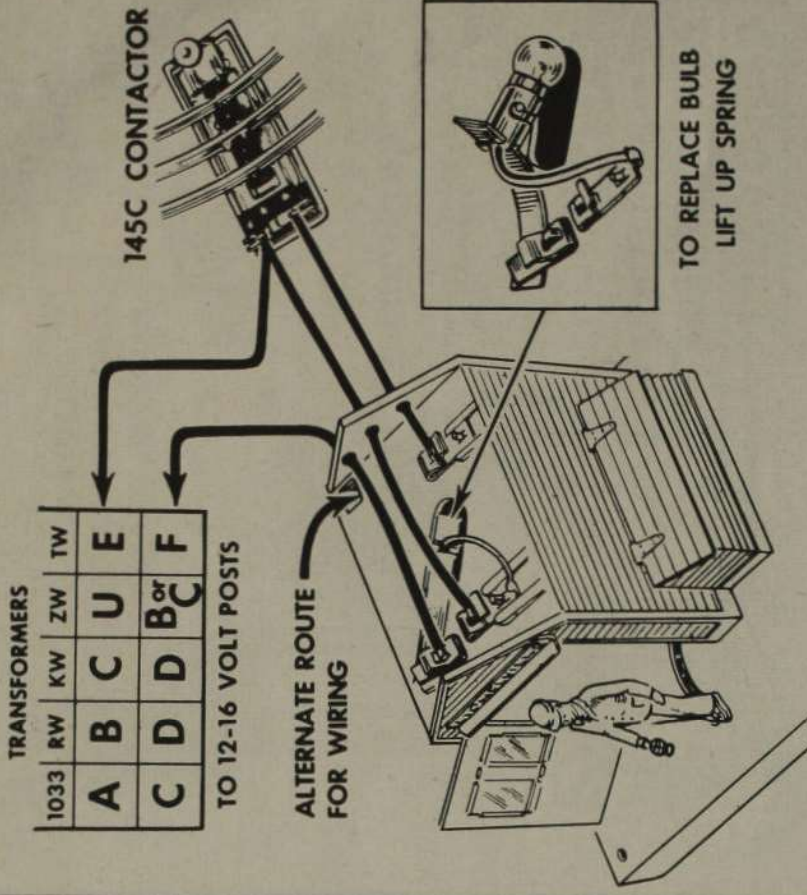
No. 140 BANJO SIGNAL



OPERATION: As the train passes over the contactor the signal light goes on and the warning arm begins to swing. The action will continue as long as the train is pressing on the contactor. An insulated rail may be used instead of the contactor as illustrated on page 38. To get longer action you can use two contactors or two insulated rails.

"Wipe Your Track Regularly"

No. 145 GATEMAN



OPERATION: Normally light in the shack is on. As train passes over the contactor the door opens and the gateman emerges from the shack. Alternate method of operation by using insulated track is the same as for No. 151 Semaphore. If desired, both accessories can be connected to the same contactor and will operate simultaneously.