

K-LINE® ELECTRIC TRAINS

WELCOME TO THE WORLD OF INTERMODAL TRANSPORTATION!

Congratulations on your purchase of these K-LINE® quality TTAX All-Purpose Spine Cars! The cars are a 1:48 scale model of the TTX® Company in-service TTAX All-Purpose Spine Cars. These cars are state-of-the-art 5-unit articulated flat cars used for intermodal transportation of trailers and containers. The cars are joined by articulated male and female connectors and the five unit train rides on six common trucks. Units "A" and "B" are end units and carry two 20' containers or one 28' through 48' trailer. The "C", "D", and "E" units carry one 20' through 48' trailer or one container, but they cannot carry two 20' containers. TTX® spine cars have run on all major railways since 1989.

K-LINE® ELECTRIC TRAINS is dedicated to quality and accuracy in the reproduction of rail transportation. The TTAX All-Purpose Spine Cars are a fine addition to any layout with close attention paid to even the smallest detail. "0" or 0-27 gauge track with a 42" curve or larger is recommended for these units.

The TTAX All-Purpose Spine cars are available from K-LINE® dealers. Units "A" and "E" are available as a two-pack. Units "B" and "C" are available as a two-pack. TTX® cars run in 5-unit trains. This package contains two cars which, when decaled, will be either an A & E pair or a B & C pair of cars. When two pairs of cars are purchased (two K-77022TT) then the "D" unit will complete the 5-unit train.

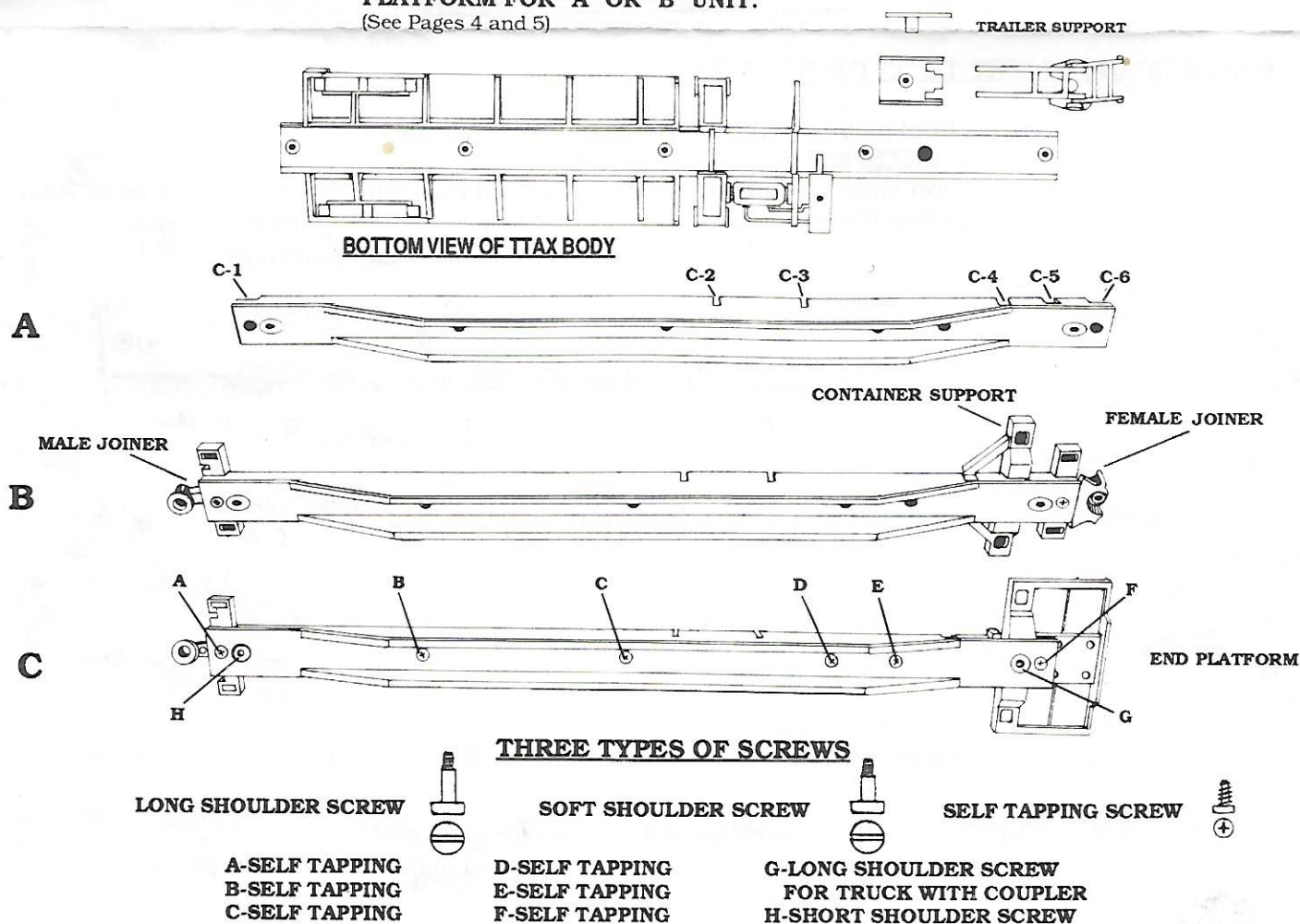
Unit "D", the center unit, PLUS a matching K-LINE® quality trailer, is available from MDK®, Inc. only. (See back page.)

FIGURE 1. DRAWING A: BASIC TTAX CHASSIS

DRAWING B: TTAX CHASSIS WITH MALE JOINER, CONTAINER SUPPORT AND FEMALE ARTICULATED JOINER FOR "C", "D", AND "E" UNITS

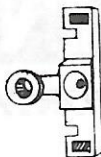
DRAWING C: TTAX CHASSIS WITH MALE ARTICULATED JOINER ON LEFT END AND END PLATFORM FOR "A" OR "B" UNIT.

(See Pages 4 and 5)

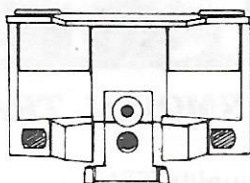




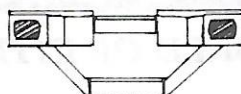
FEMALE JOINER



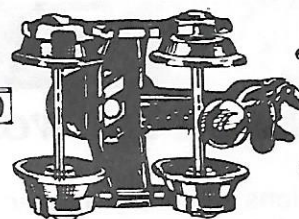
MALE JOINER



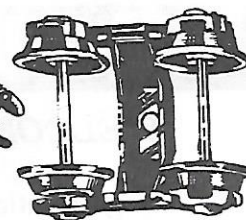
END PLATFORM



CONTAINER
SUPPORT



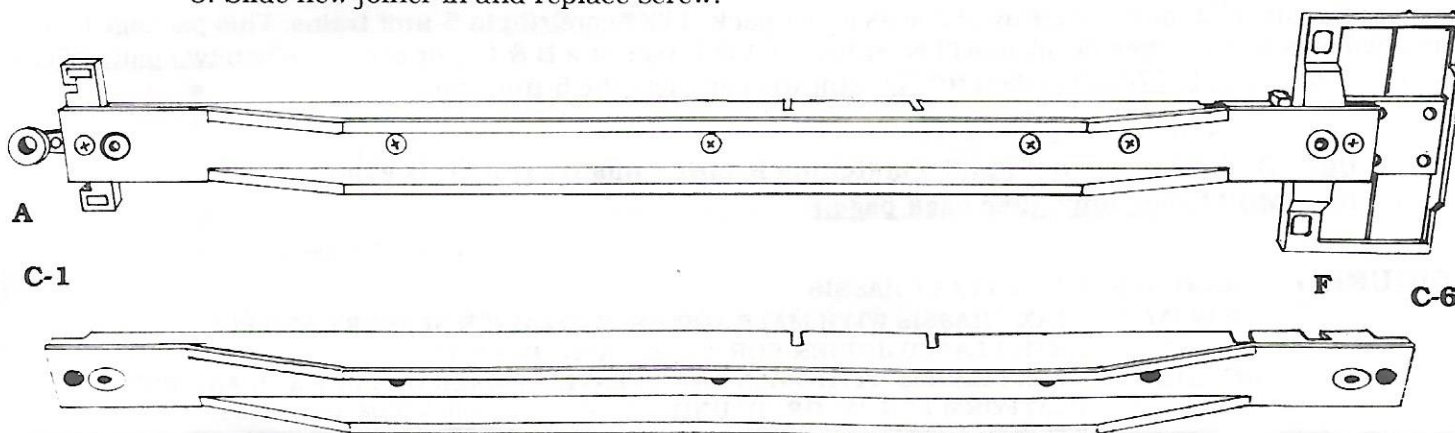
TRUCK WITH
COUPLER



ARTICULATED
TRUCK

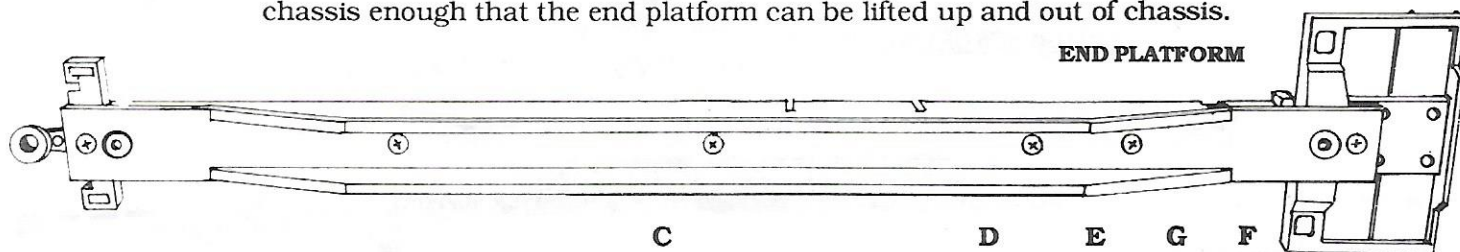
TO CHANGE JOINER from male to female/female to male.

1. Remove screw A , slide old joiner out of slot C-1
- Follow Step 1. for screw F and slot C-6.
3. Slide new joiner in and replace screw.

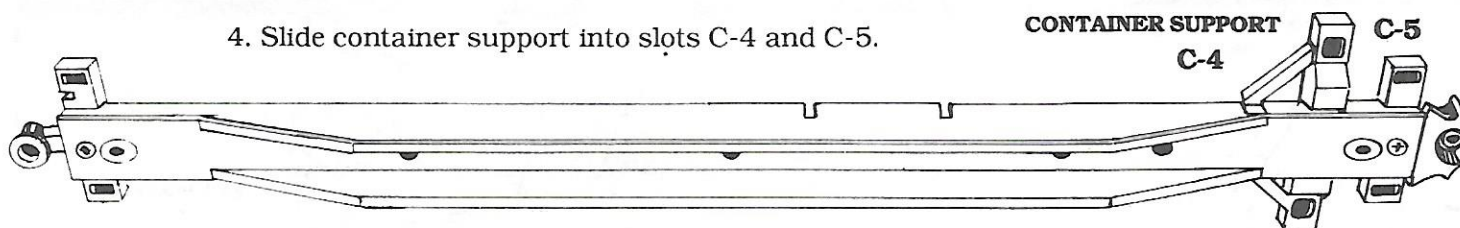


TO CHANGE "A" OR "B" UNIT TO "C" OR "E" UNIT:

1. Remove truck from platform end of chassis by unscrewing shoulder screw G.
2. Remove screws C,D,E, and F.
3. Lift trailer support cover (secured by screw E) from chassis. Lift this end of body away from chassis enough that the end platform can be lifted up and out of chassis.



4. Slide container support into slots C-4 and C-5.

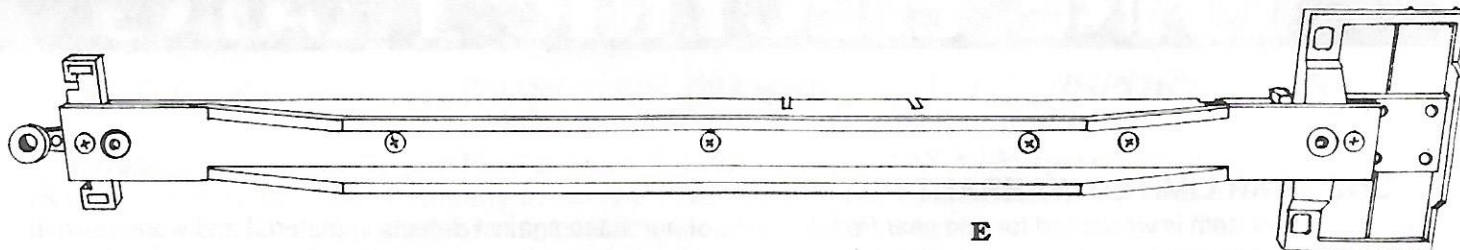


5. *Replace screws C, D, and E along with trailer support cover.
6. Slide male or female joiner into slot C-6 on chassis and fasten with self-tapping screw.

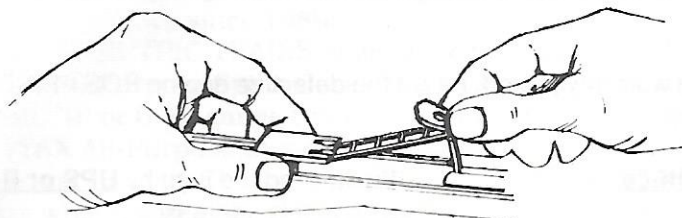
*Be sure that pins on support are directed toward the top side of TTAX.

NOTE: This conversion should produce a male joiner on one end and a female joiner on the other end of your TTAX.

TO RAISE TRAILER SUPPORT:



1. Loosen Screw E completely.
2. Lift trailer support cover and carefully slide trailer support stand into an upright position.

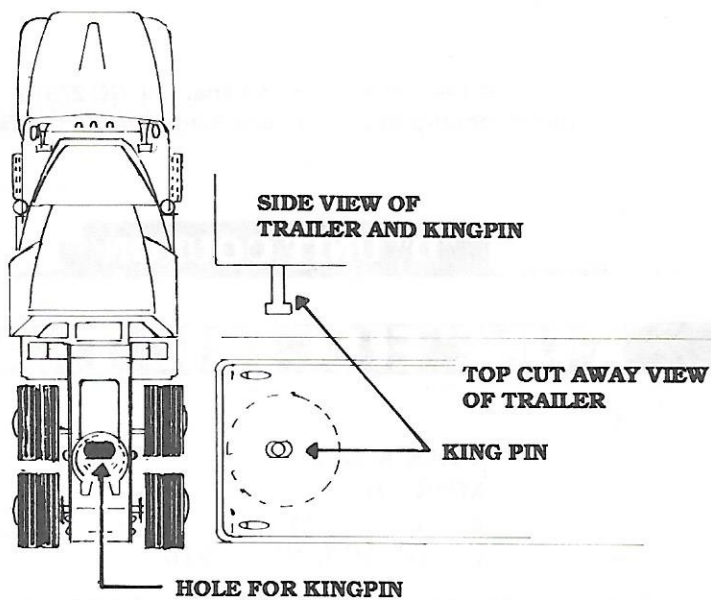


3. Replace trailer support cover and tighten screw E down to lock trailer support in position.
4. Reverse procedure to lower support.

HOW TO CONNECT THE TRACTOR TRAILER

1. To connect trailer to the tractor, turn trailer at a right angle to the tractor and slip king pin into the hole in the tractor.

TOP VIEW OF TRACTOR

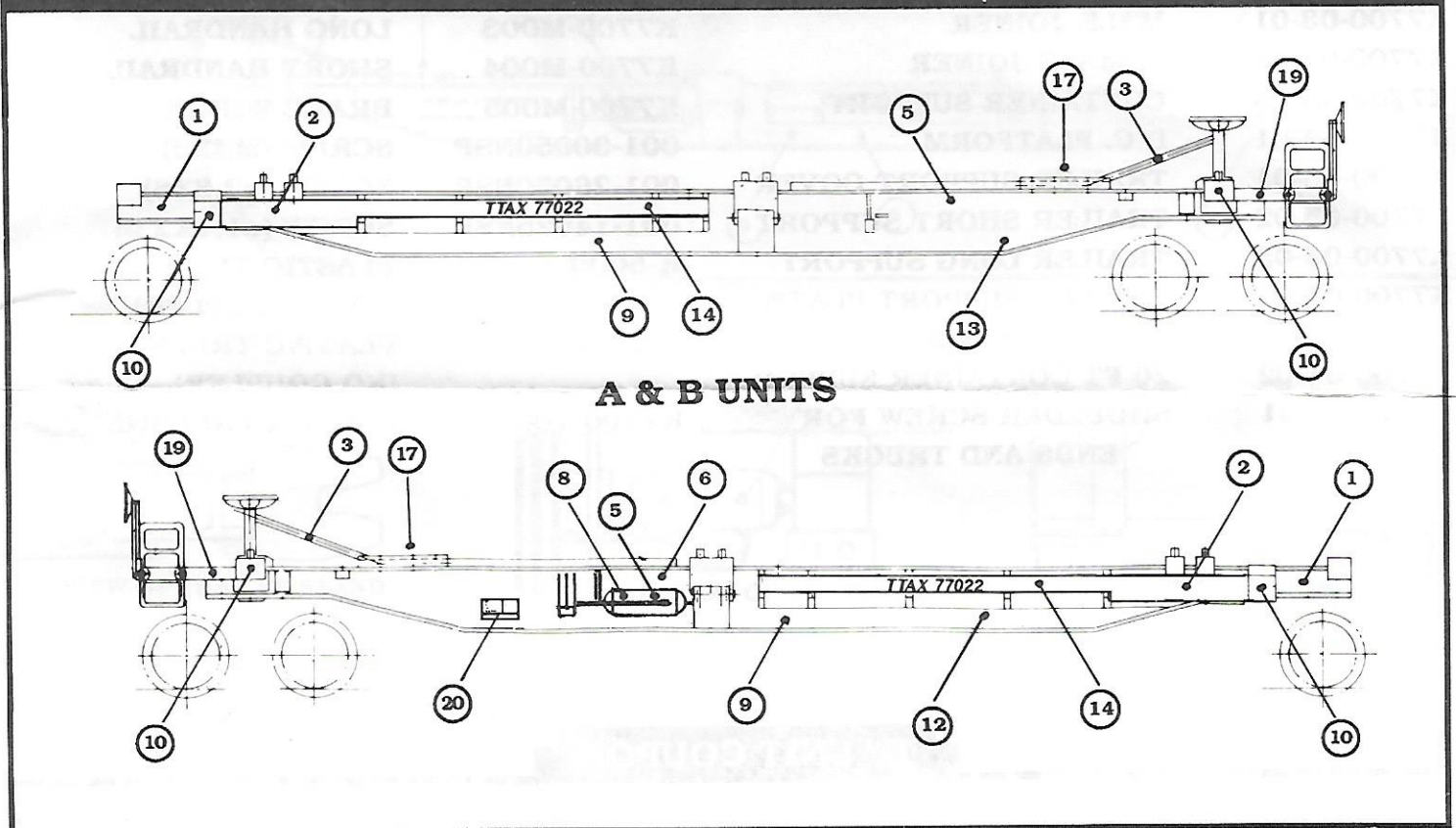


2. With king pin in the hole turn trailer in the same direction as the tractor and units are locked together.
3. Reverse procedure to disconnect the trailer.

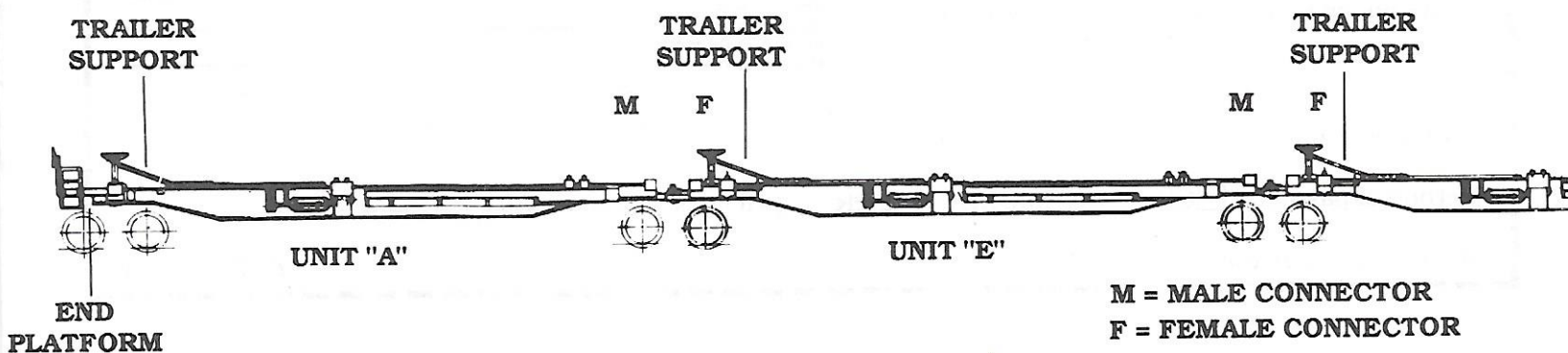
DECAL INFORMATION FOR ENCLOSED DECALS:

1. Trim decals close to lettering to eliminate excess film. Hold up to light to prevent cutting white lettering.
2. Dip decal in water for 5-10 seconds. Place on blotter, Tissue, or towel until they flatten. Leaving the decals in water for an extended length of time will wash the adhesive off.
3. Slide decal off the paper, face up, into position. If necessary to move it, apply one or two additional drops of water with a toothpick and use the toothpick to move it.
4. Soak up excess water with the corner of a blotter or edge of tissue.
5. Solvaset applied on top of the decal (directions on bottle) will snug it down over rivets and into crevices and other detail.
6. Store unused decals away from excess heat or moisture.

DECAL POSITIONING "A"/"B" UNITS

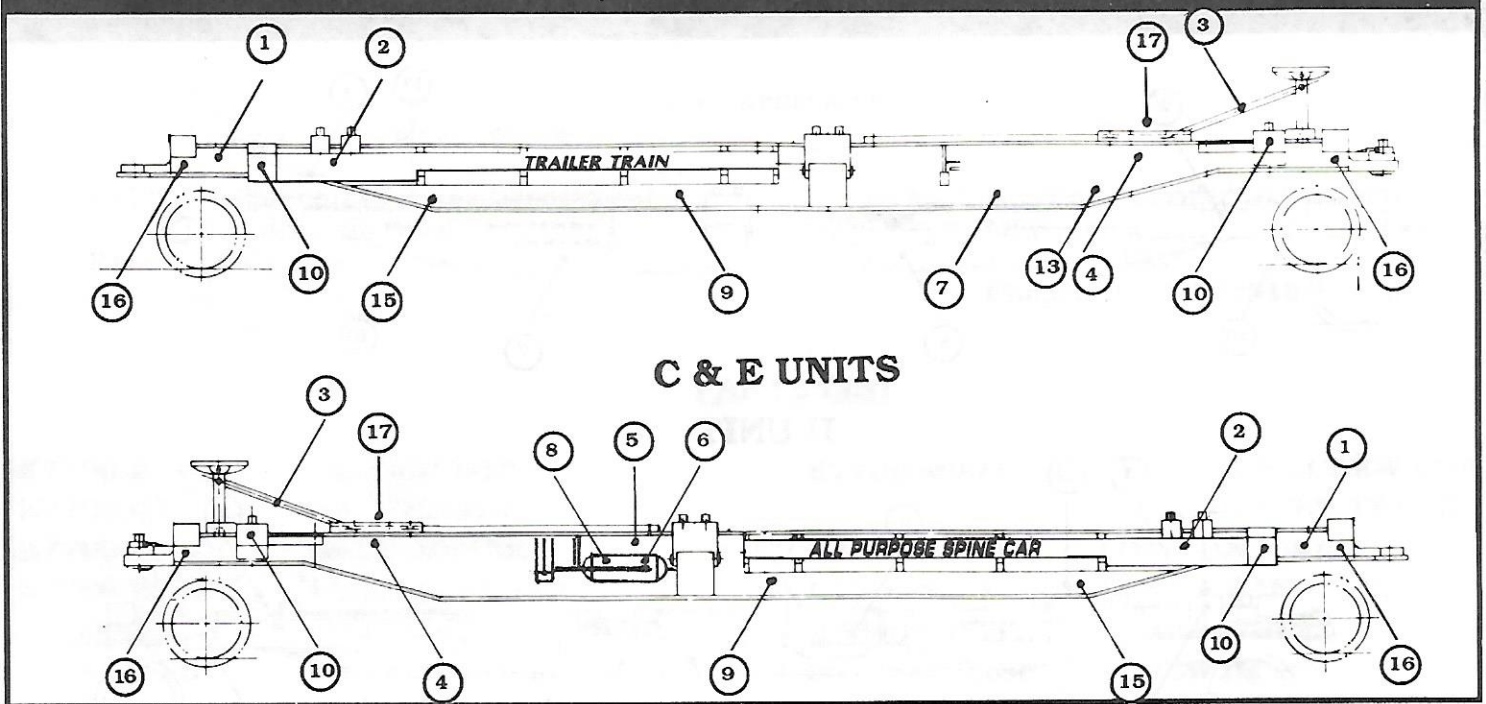


FOR POSITION OF DECAL # 18 SEE DECAL IDENTIFICATION SECTION



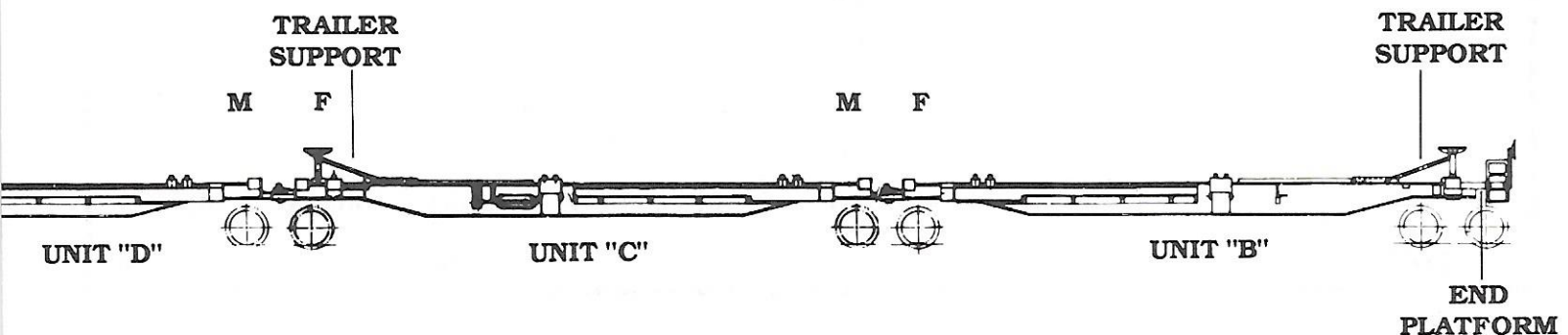
**M = MALE CONNECTOR
F = FEMALE CONNECTOR**

DECAL POSITIONING "C"/"E" UNITS

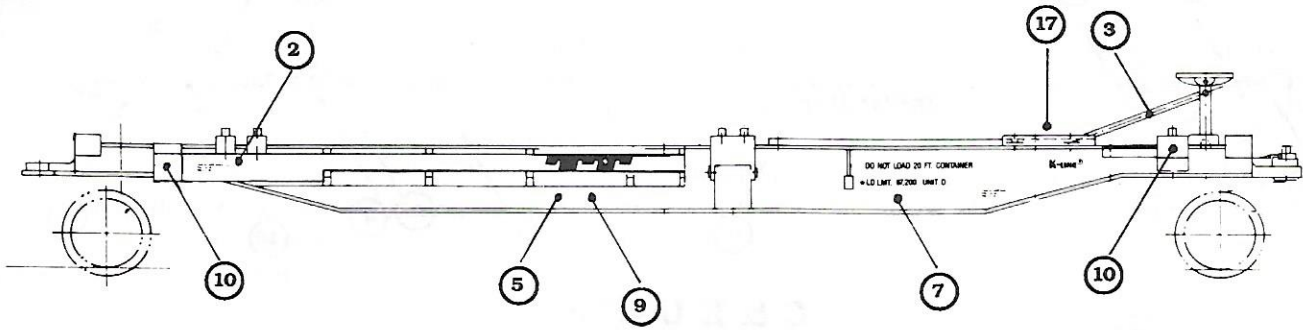


DECAL IDENTIFICATION

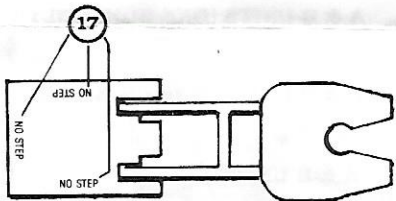
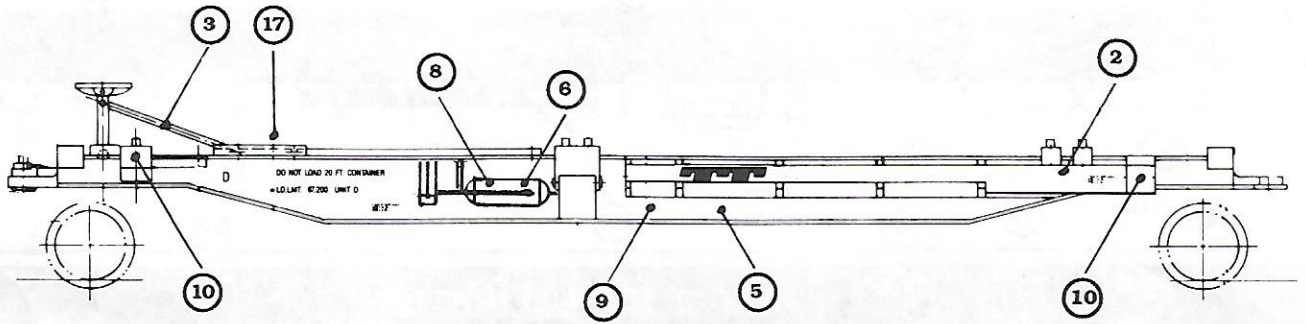
1	A B C E	USE PROPER LETTER FOR UNIT IDENTIFICATION	11	DRAFT GEARS M901G	END OF PLATFORM A & B UNIT
2	LOWER PEDESTAL BEFORE LOADING TRAILER	ALL UNITS	12	OWNERSHIP SUBJECT TO A SECURITY AGREEMENT FILED WITH THE INTERSTATE COMMERCE COMMISSION	A & B UNITS (ONE SIDE ONLY)
3	KEEP CLEAR OF ORANGE AREA	ALL UNITS	13	RAF	A & B UNITS (ONE SIDE ONLY)
4	2 INCH HF COMP SHOES SPRG 7 OC D5 SPRG 4 IC D5	C & E UNITS	14	NON INTERCHANGE CAR SEE EQUIPMENT REGISTER	A & B UNITS
5	PULL RELEASE ROD ON UNITS A, B, AND D TO RELEASE BRAKES	A, B, & D UNITS	15	2 INCH HF COMP SHOES SPRG 7 OC D5 SPRG 6 IC D5	C & E UNITS
6	TEST RESERVOIR	ALL UNITS SEE FIGURE I	16	32" AAR M 618 FLEXIBLE HOSE	C & E UNITS
7	(KNORR BRAKE EQUIPMENT ONLY) CAR EQUIPPED WITH TEST BRAKE VALVE. IF CONTROL VALVE DOES NOT FUNCTION AS INTENDED CONTACT CAR OWNER FOR DISPOSITION	A & B UNITS (ONE SIDE ONLY)	17	NO STEP NO STEP NO STEP	ALL UNITS SEE FIGURE III
8	ADRW 00-00 K LINE N/C BPL-86	ALL TANKS A, B, C, D, & E UNITS SEE FIGURE I	18	UNIT A UNIT B UNIT C E UNIT	PLACE UNIT IDENTIFICATION AFTER LD. LMT. WEIGHT ON A, B, C, & E UNITS
9	TTAX 77022	ALL UNITS	19	A END B END A END B END	A & B END PLATFORMS
10	LIFT/JACK HERE	ALL UNITS	20	ET	A & B UNITS (ONE SIDE ONLY)



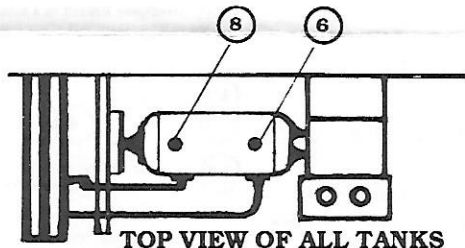
DECAL POSITIONING "D" UNIT



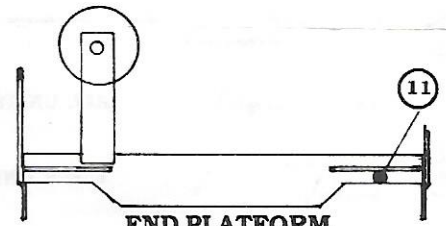
D UNIT



TOP VIEW OF TRAILER STAND



TOP VIEW OF ALL TANKS



END PLATFORM

A parts list has been provided for your convenience in ordering extra parts.

To order parts please contact:

By Phone: **Customer Service Department**

1-800-866-9986

Fax: **(919) 929-4050**

By Mail: **Customer Service Department**

MDK, Inc.

P.O. Box 2831

Chapel Hill, NC 27515

PARTS LIST

K7700-01-01	PLASTIC BODY	K7700-M002	SHOULDER SCREW FOR
K7700-02	D.C. CHASSIS		(ARTICULATED TRUCK)
K7700-03-01	MALE JOINER	K7700-M003	LONG HANDRAIL
K7700-03-02	FEMALE JOINER	K7700-M004	SHORT HANDRAIL
K7700-03-03	CONTAINER SUPPORT	K7700-M005	BRAKE WHEEL
K7700-04-01	D.C. PLATFORM	001-30050NSP	SCREW (M3X5)
K7700-05-01	TRAILER SUPPORT COVER	001-26060NSP	SCREW (ø2.6X6)
K7700-05-02	TRAILER SHORT SUPPORT	001-14025NSP	SCREW (ø1.4X2.5)
K7700-05-03	TRAILER LONG SUPPORT	K-5000	PLASTIC TRUCK
K7700-05-04	TRAILER SUPPORT PLATE		(WITH COUPLER)
K7700-06-01	CONTAINER SUPPORT	K-5000R	PLASTIC TRUCK
K7700-06-02	20 FT CONTAINER SUPPORT		(NO COUPLER)
K7700-M001	SHOULDER SCREW FOR	K7700-100	INSTRUCTION SHEET
	ENDS AND TRUCKS		

"D" UNIT COUPON

K-LINE® ELECTRIC TRAINS

To receive Unit "D" of the TTAX All-Purpose Spine Cars PLUS a matching quality K-LINE® trailer mail this coupon along with \$27.45 and two proofs of purchase from the TTAX two-packs.

Please send _____ # of "D" Units w/Trailer

I have enclosed _____ # of proofs of purchase

(TWO PER UNIT)

\$24.95

+\$2.50 (SHIPPING & HANDLING)

Total Enclosed \$ _____ \$27.45 per unit

NAME _____

ADDRESS _____

UPS SHIPPING
MUST INCLUDE
STREET ADDRESS
AND ZIP CODE

Method of payment: ☐ CHECK ☐ MONEY ORDER PHONE# _____

Make checks payable to MDK®, Inc.

K-77022D

K-LINE® ELECTRIC TRAINS

ONE YEAR LIMITED WARRANTY

This item is warranted for one year from the date of purchase against defects in material and workmanship. We will repair or replace at our option, the defective part without charge for parts or labor, if it is received within one year from the date of purchase. This warranty does not cover items that have been abused or damaged by careless handling. Transportation cost, if any, incurred by you are not covered by this warranty. Lightbulbs are not covered by this warranty.

1. Should service be required during the warranty period, return the defective engine POST PAID to MDK®, Inc.

If you are sending by the U.S. Post Office,
send to this address:
MDK, Inc.
P.O. Box 2831
Chapel Hill, NC 27515.

If you send the item by UPS or RPS
ship to this address:
MDK, Inc.
Route 3
Hillsborough, NC 27278

Be sure to include a copy of your sales receipt or other proof of purchase to verify that the engine qualifies for complete service at no charge.

2. CAUTION: Make sure the item is well packed to prevent damage to the engine. We recommend that the package be insured.
3. Please make sure that all instructions were followed carefully before returning any merchandise for service.

© 1991 MDK®, Inc. Chapel Hill, NC 27515
Includes all photographs, text, and diagrams. All rights reserved.

"D" UNIT COUPON

K-LINE® ELECTRIC TRAINS

Mail Coupon to:

TTAX Mail In
MDK, Inc.
P O Box 2831
Chapel Hill, NC 27515

TTAX ALL-PURPOSE SPINE CAR WITH MATCHING TRAILER

See reverse side for instructions.

K-77022D