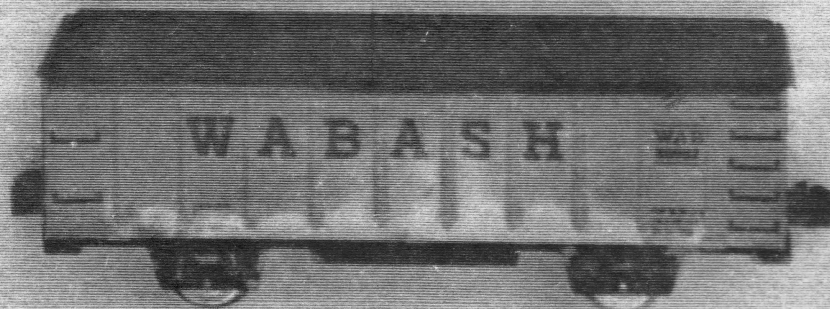
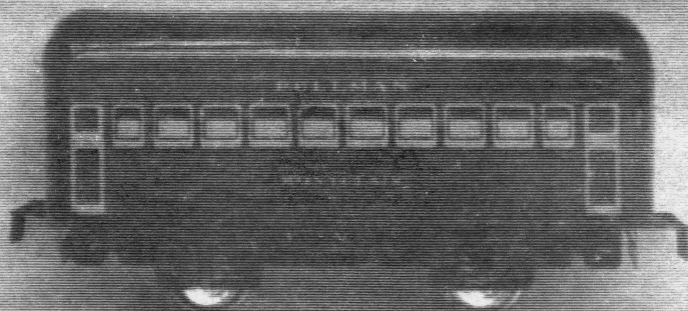
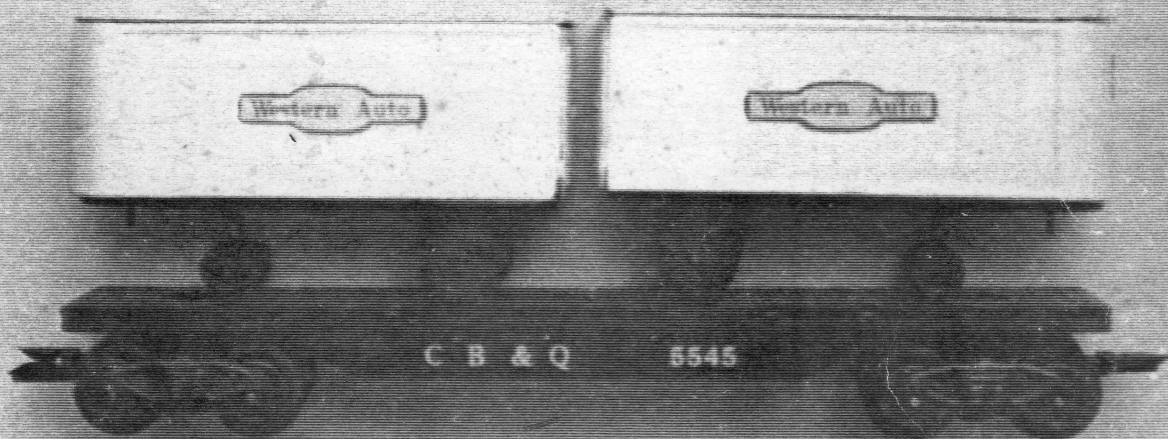
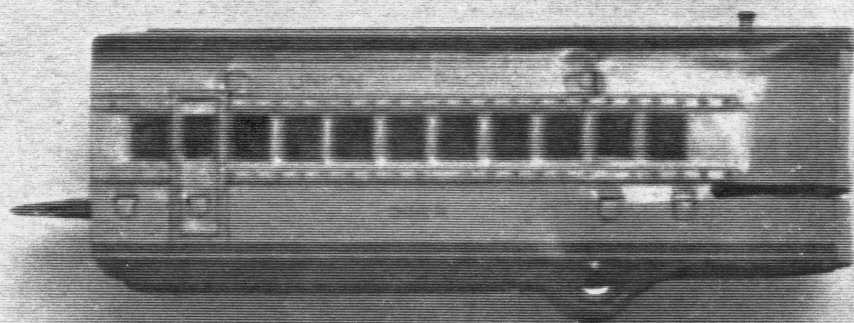


# Collecting With Marx

Volume 1 Issue 1 October, 1994



COLLECTING WITH MARX.....

You could receive.....

FREE ADVERTISING  
BY LINES  
FREE SUBSCRIPTIONS

Call for information!

SUBSCRIPTION RATES: \$15.00 per year

All subscriptions will be mailed on the same day with the same amount of postage to avoid unfairness in delivery. Mail dates will be the fifth day of every other month beginning with the issue #1 October, 1994.

WITH EVERY SUBSCRIPTION comes a free ad of no more than 35 words with each additional word costing 10 cents.

CLASSIFIED ADS are 10 cents per word with a \$3.00 minimum and no maximum. Columns available are: Buy, Sell and Trade.

DISPLAY ADS: Quarter page-----\$10.00  
Half page-----\$18.00  
Full page-----\$30.00  
(Slightly higher if not camera ready)

PAY-AS-YOU-PLAY: If you want your ad in the next issue-send the money for it.

WE RESERVE THE RIGHT at COLLECTING WITH MARX to print or not print anything that comes into our office.

INCLUDE YOUR NAME, address and phone number with every ad or article. Nothing will be printed about you that you do not designate. If you do or don't want your name on an article or other submission just designate so.

COLLECTING WITH MARX is not responsible for any errors, accuracy or problems you may have with advertisers in this newsletter. All photos, cartoons and articles become the property of COLLECTING WITH MARX.

AD DEADLINES:

FOR ISSUE

NOVEMBER 5 -----DECEMBER  
JANUARY 5 -----FEBRUARY  
MARCH 5 -----APRIL  
MAY 5 -----JUNE  
JULY 5 -----AUGUST  
SEPTEMBER 5 -----OCTOBER

COLLECTING WITH MARX  
P.O. BOX 614  
SPRINGFIELD, MO. 65801-0614  
417 833-3840  
6-10 P.M. CST or leave message  
Copyright 1994

Dear fellow MARX enthusiast,

You have received the first issue of Collecting With MARX and that means I consider you one of the few MARX fanatics.

Whether you collect trains, playsets, figures or just like anything MARX, this newsletter is for you. Obviously this publication has a lot of room for improvement but it's a start.

It's my wish that Collecting With MARX will be accepted by our community as the hub of all news and views. It is also my wish that we can put our egos aside and open our minds to expand the vast knowledge that Louis MARX left us.

Since you received this newsletter, I believe that you know enough about MARX to be a contributor. It's not a big money thing so please consider it yours. Please consider doing something for the newsletter in the coming months.

This letter has gone out to 35 states but that is only the tip of the iceberg. Feel free to copy this letter and pass it out to the people you know at the next meet you attend.

We will include anything old or new which has been produced by MARX.

I can't stress enough how important contributions are. Once again please consider this newsletter YOUR forum for expansion of knowledge in the MARX community.

Sincerely,

*Marx Plummer*

P.S. If any of you are willing to give names and addresses confidentially of other MARX collectors you know feel free to.

Send comments or information to:  
Collecting With MARX  
Box 614  
Springfield, MO 65801-0614

Hi everyone and welcome to the first issue of Collecting With Marx. I'm Marx! Yes it's my given name and no I have no direct ties to Louis Marx or his phenomenal toy empire. I simply am an enthusiastic toy and train collector. 99.9% of my collection is Marx, but this newsletter welcomes articles and photos from any other field of toy and train collecting except Lionel and American Flyer. I believe they have plenty of coverage in other publications.

I collect mostly Marx so if you want to see anything else in this newsletter you must submit it. I encourage you as a reader to send in questions, answers, arguments, stories, photos, cartoons, articles or advertising. Ads will be very inexpensive as will be the cost of the newsletter itself. You see I don't want to make any money from the newsletter at all. If we get more money than we need to produce it, we will use it to make color photos, slick pages and an overall more appealing newsletter.

This publication is to show off toys, trains, figures, buildings or vehicles that are about (give or take) the scale of toy trains in O and O27 scale.

We'll be reporting on shows in our area and a few out of our area. Again, if you want something reported on from areas other than Southwest Missouri you had better send it in. We want to know what you're finding, what you haven't seen lately and in our buy, sell, trade column, what you want and have to get rid of.

I want to encourage you to contribute to "our" newsletter. I personally want to learn more about what I am collecting and I want to let others know what I am seeing and what I have. If you have any ideas or simply want to show off a great piece or set, send a short or long article and some photos and we'll put it in the next letter (send it camera ready if possible). Simplicity is the order of the day with this publication because I'm not set up to do it any other way.

It's up to you! You can do something! Together we can have a newsletter to be proud of. Don't just sit and wait for your issue to come, put something together and send it in. We will no longer have to rely on publications that have no interest in our corner of collecting to squeeze in a photo or article here and there. I have had nothing but encouragement on this idea from friends and fellow collectors so let's get together and keep the ball rolling.

You will find a deadline chart for advertising and articles and a chart showing advertising rates. Your ad rates decrease greatly with contributions to the newsletter.

I believe we can unite the country through this newsletter in the field of small toys and trains. It'll be hard to get going but when we get organized we'll become a rock for contributions from enthusiasts everywhere.

Yours in Collecting,

*Marx Claussen*

## GUNSMOKE

### Playset...TV Show...Memories

For years I've worn an old sweatshirt to toy and train shows that has photographed on the front a MerryMakers toy, two Marx train sets and a Gunsmoke playset. Many times I've been asked if I have a Gunsmoke playset in my collection and until now I've had to say no. I have crossed off one more want from my list.

My set #4268 is inclusive of all its contents with exception of the small white cabin, which I already had, and the instruction sheet. (If anybody has an instruction sheet feel free to send me a copy!)

I opened the box to find Matt Dillon, Miss Kitty, Doc and Chester complete and intact. From the molded plastic mine all the way down to the swinging saloon doors everything was intact and clean as a pin.

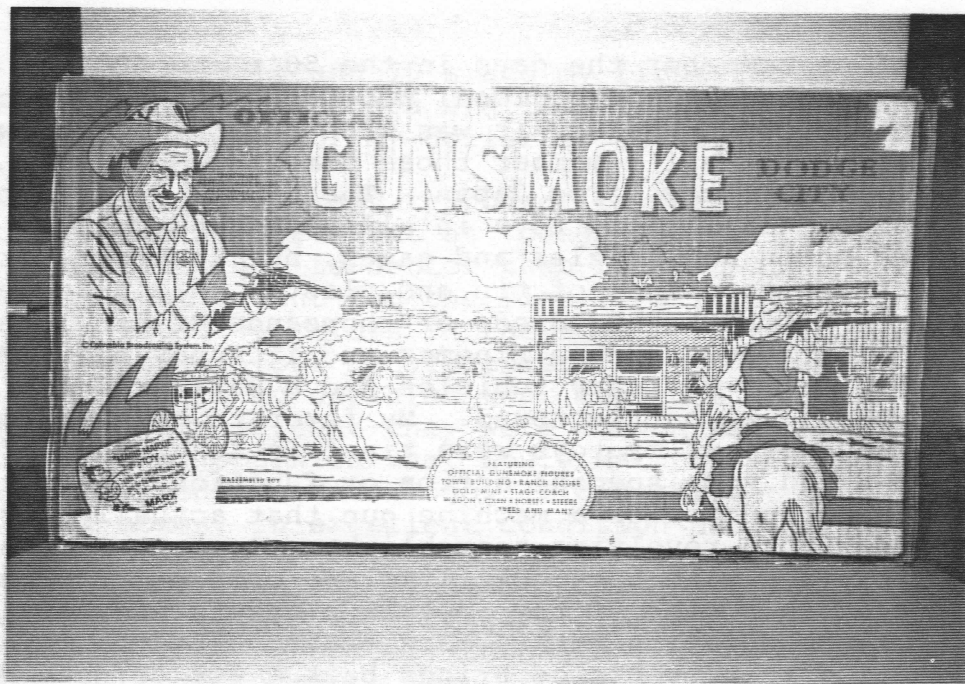
There's one thing that had me puzzled, but when I think about it, it makes sense. The Gunsmoke playset was not a successful playset in 1960 because the show was geared and marketed for an adult audience. Most kids watched the show, but since it had an adult theme kids couldn't get into it like a show they could identify with.

The set is desired more today than in 1960. I watched Gunsmoke until it went off the air in the mid 70's, so my memories of the show are childhood to early teen ones. Therefore having memories of the show from childhood I place the set on a higher plane than if I had seen it as an adult. Another fact that enters into the desirability of this set is that there aren't many of them out there to be collected since they weren't popular at time of production.

This set originally sold for \$5.66 and I have heard reports of as much as \$1200.00 being collected for it in the last twelve months.

It's truly rewarding and fulfilling collecting items on my want list and it just goes to show us if we leave no stone unturned we can still find good sets even in the 90's!





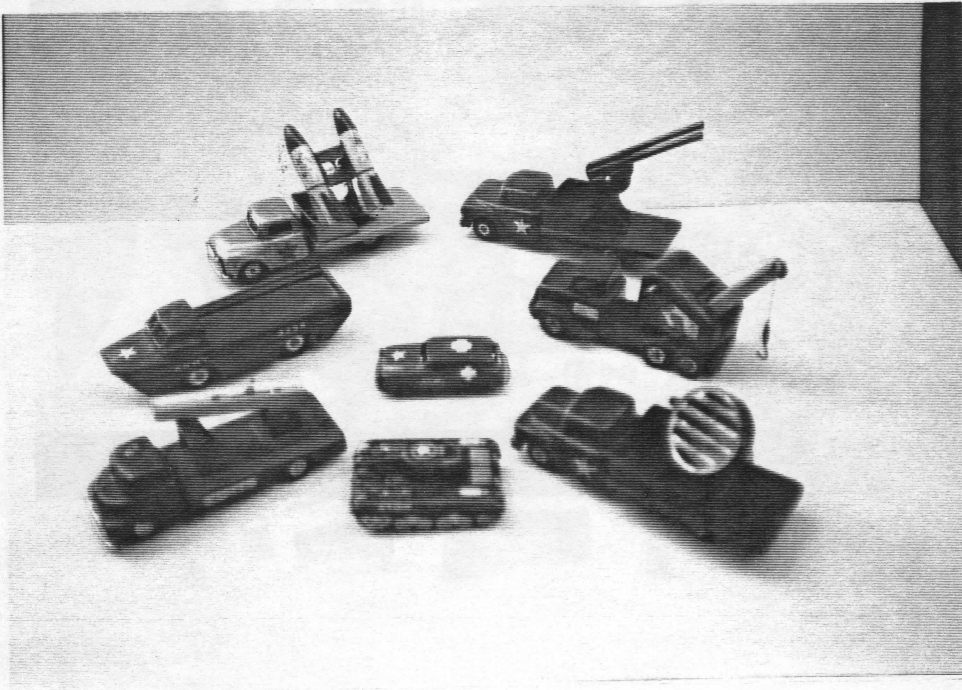
## REMEMBER THE DAYS

Many of us remember the days in the 50's and 60's of that Saturday morning visit to the local Woolworth's or our local 5 and 10 cent store. Whether it was with our parents or with our children we can all remember those dimestore counters filled with inexpensive toys from Japan. There were plastic toys, wooden toys and tin lithoed toys in all sizes and colors. They had tops and dolls and puzzles and games, but the toys I remember most are the toys made of tin and plastic that had wheels.

Louis Marx imported hundreds-of-thousands of tin litho toys under his trademark name Linemar and if a boy had a Marx army playset, a few military vehicles and a Marx trainset he could set up his own battleground. My favorite toys are military toys and most of my toys were tin friction. Many of the military toys had some special action or function like a truck with a missile launcher or a machine gun that actually fired or a flatbed with a revolving searchlight. I spent many hours as a child playing with toys just like the ones photographed here. Many of this type of toy came in playsets and fit in just right in conjunction with a Marx train set.

Collecting these vehicles brings back a lot of good memories of my childhood. What's good about collecting these vehicles is the fact that they are still very prevalent at toy and train shows for as little as a couple of bucks. They show up at a couple hundred bucks as well but they're just like anything else. Know what you're buying. Make sure it's in an acceptable condition and make sure the price is in line with others you have.

Memories of my childhood are good ones and it's nice to reflect back on them through the vehicle of Marx toys. Happy collecting!



## TAKE A LOAD OFF

I grew up in the 60's and 70's and my first two train sets were MARX plastic. My favorite cars are load cars and the autohaulers have as much play value for my dollar as any of the other cars MARX made in plastic.

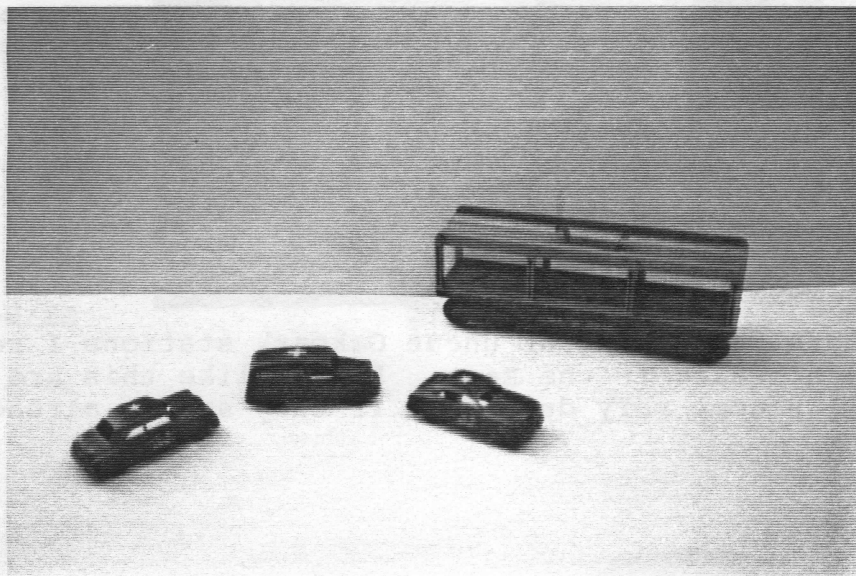
On today's market are many reproduction loads for the empty flat cars that are so prevalent at today's meets. It's my feeling that a reproduction load is better than no load at all, however an original is what I want for the flat cars I put on my shelf!

So far I've found 16 colors in the four original loads. These four loads consist of four manufacturers: Ford, Chevrolet, Dodge and Studebaker. It's my opinion that the most popular belief about original loads is that they were not marked with the MARX logo. It's also my opinion that Louis Marx made many sets with loads that contained the Marx logo. I own three sets that are in their original boxes, in excellent condition and all four loads have the original logo.

It's common knowledge that thousands of those same plastic vehicles both with logo and without were produced for many other purposes. They were sold separately to build your own fleet of vehicles and they were included in many different playsets both all plastic and tin litho. They were included in all plastic sets such as service stations, ranch houses, diners, factories and others. Many tin litho service stations included plastic vehicles. Many were made for Sears bearing the names Sears Automotive Center and the ever popular Allstate Service Station, and others including; Marx Sky-view Parking, Turnpike Service Station, Automatic Car Wash, Midtown Super Service Center, Super "Car City" Service Center and others.

A set of military vehicles in the same molds were produced for use with military playsets. They were available in olive drab with white stars and lettering. They look really good mounted on a #2246 flat with a gray autohauler support structure. They really dress up a plastic military set.

I still find these plastic cars in junk boxes under tables and with other vehicles included in other sets. They're still out there. All you have to do is look for them.





Just For Your Information

I was at an outdoor flea market a few years ago when I spotted an early MARX hand gun laying on a table across the way. My curiosity took me immediately across to the toys of a man who exclaimed, "That's really a nice one! It's a MARX piece and it dates to the turn of the century." Well maybe this man didn't know what he had, but we in the MARX collecting community know for a fact that Louis Marx was born in 1896 which made him only four years old at the turn of the century. Some of the first information I have of Marx being involved in the toy business, in a position of authority, is contained in the letter duplicated on the opposite page.

According to "Greenberg's Guide to Marx Toys" volume 1, Marx worked for Ferdinand Straus at age 16 and incorporated Louis Marx and Company in 1919 at age 23. At age 26 he became a millionaire and the sky was the limit from there on.

So the next time a vendor tells you, "That's an early teens Marx train.", you'll know he's not really sure what he's got!

\*\*\*\*\*



Photographed here is a sheet of uncut Oakpark stations I recently purchased from a dealer in the East. Pieces like this are very unique and will become very desirable if they aren't already!



**C. E. CARTER CO.**  
**MECHANICAL TOYS**  
**ERIE, PA.**

NEW YORK OFFICE  
200 FIFTH AVENUE

Oct. 16th, 1920.

Gentlemen:

We respectfully refer your attention to our special introductory offer of one gross assortment of our steel mechanical toys at \$50 per assortment.

These toys as you can see, are of the highest selling merits, sterling values and big profit producers. The Climbing Monkey for instance, is the biggest selling mechanical toy in the world—as staple as a rubber ball or a pencil. The other toys are equally good and standard.

We are anxious to establish direct connections with the select retail distributors of our toys and for this reason are addressing you with this attractive introductory offer. For next year, we will have a line of fourteen mechanical toys in all.

May we meanwhile look for a beginning with you now. Simply return the enclosed postal to us, with your name and address.

Yours very truly,

C. E. CARTER CO.

By LOUIS MARX,  
Vice-President.

LM/EB

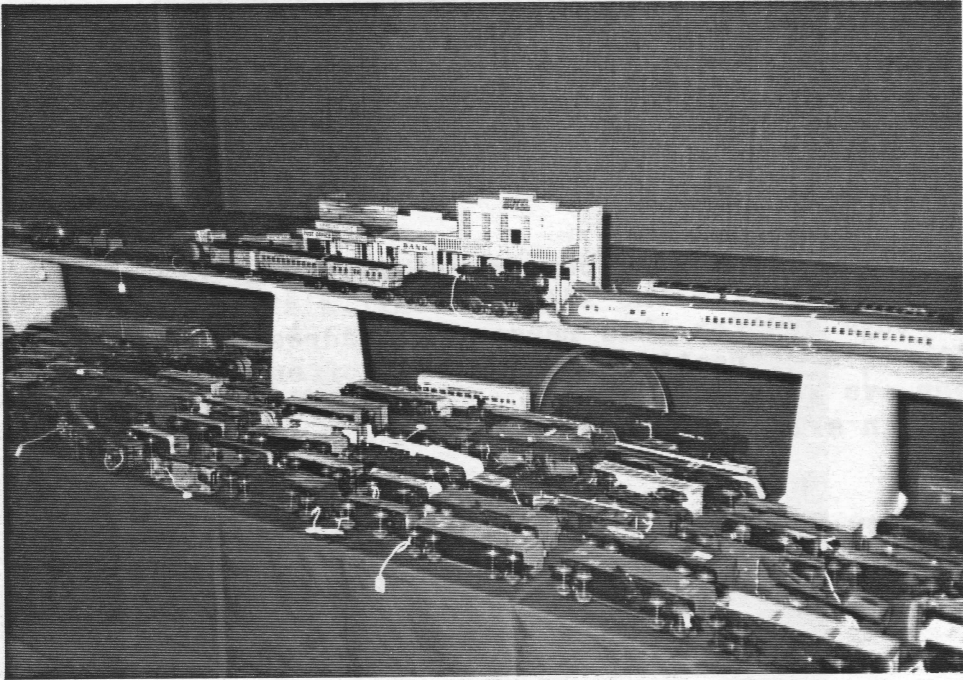
\*\*\*\*\* SHOW REPORTS \*\*\*\*\*

Kansas City, Kansas was the sight of the August 28th Mid America Train meet at the Jack Reardon Convention Center. Pat and Lee Hanssen have hosted this exceptional show for many years. 290 tables were sold and trading was fast and furious early as MARX trains were as prevalent at this show as I have ever seen.

A red and blue dump truck on a 6" flat car, in excellent condition, sold for \$150.00. One dealer had a six piece gray Western Pacific ABA set with three coaches and an excellent 2850 set with red 198, blue tender and two yellow coaches that sold for \$250.00. Another dealer had a silver 3557 coach and 3558 observation in excellent condition for \$130.00 each. The same dealer had a red Jubilee style engine with a red and orange tender in fine condition.

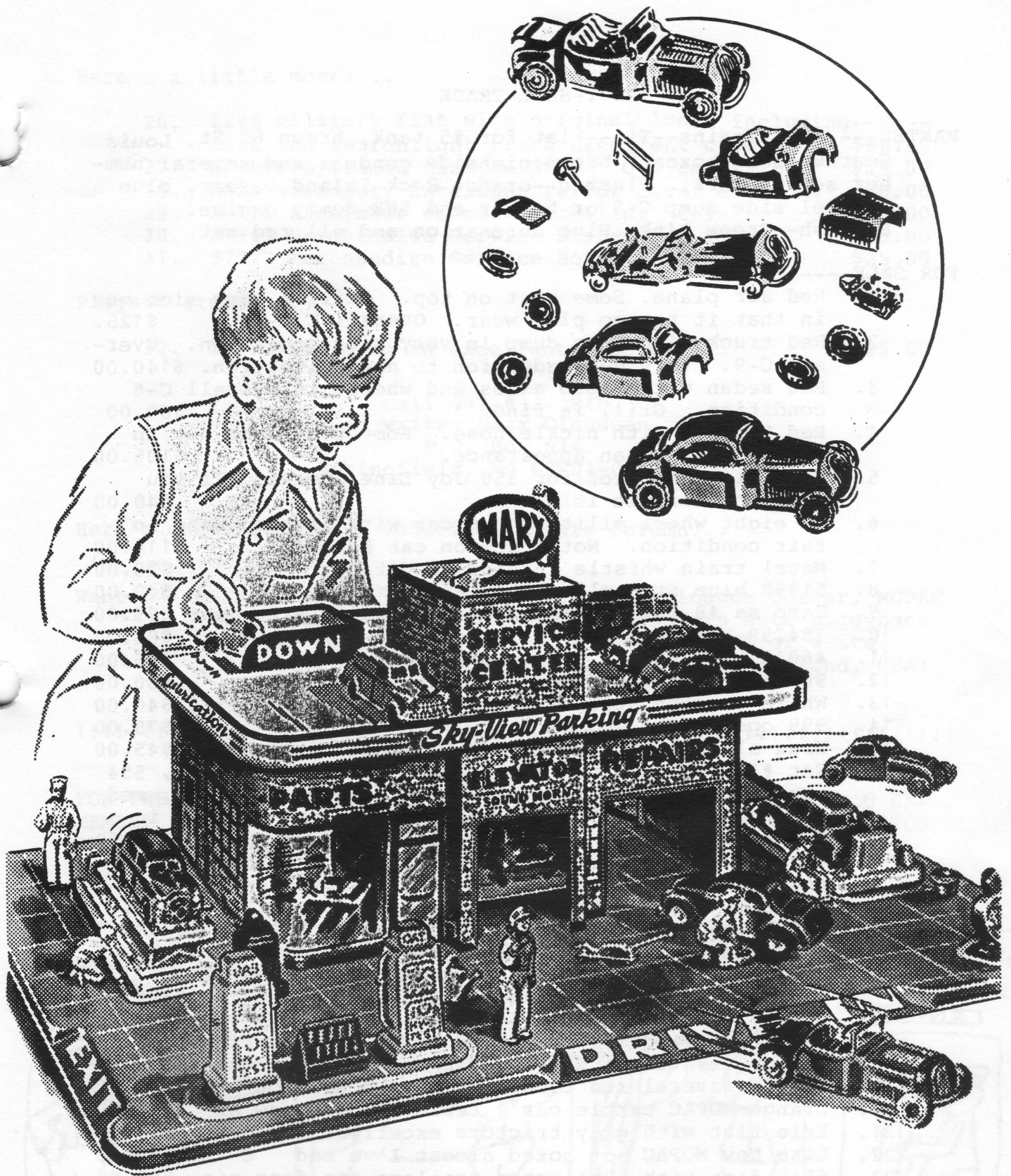
Many boxed sets graced the trading floor including a pre-war 8-wheel one-way coupler set in excellent condition. Also many fairly common sixties sets were available for purchase.

This show is rated an overall 9 out of 10 for availability of MARX, easy access, good crowd and quality of merchandise!



!!

Got MARX set numbers not in the first set book? Send set number, description of box and contents to: COLLECTING WITH MARX and we'll see that the information gets to the appropriate people!



An example of some original LOUIS MARX factory artwork. (Early 1950's)

BUY-SELL-TRADE

WANTED----MARX Trains--Tin--Flat for #5 tank, brown 6" St. Louis Southwestern boxcar, brown highside gondola and several number series cars. Plastic--orange Rock Island boxcar, blue 4-wheel side dump C-9 or better and 588 dummy engine. English--Green Link, Blue coronation and all red set.

FOR SALE----

1. Red air plane. Some rust on top. Still a very nice one in that it has no play wear. Overall C-7 \$125.
2. Red truck with blue dump in very nice condition. Overall C-9. Very good addition to any collection. \$140.00
3. Red sedan with repro axles and wheels in overall C-6 condition. Grill is fine. \$60.00
4. Red Mercury with nickle nose. Some play wear but in overall C-7 clean appearance. \$105.00
5. Have nice cab roof for 350 Joy Line engine. If you need one here it is! \$40.00
6. 6" eight wheel military gun car with lithoed base in fair condition. Not a common car however! \$110.00
7. Metal train whistle in good condition. \$20.00
8. 51998 blue Streamliner boxcar overall good \$40.00
9. Same as #8 but red and silver overall fair -door \$25.00
10. 384299 Yellow B+O boxcar some play wear C-6 \$95.00
11. 46010 blue SSW C-7+ some play wear \$95.00
12. 90171 B+LE boxcar red silver C-7 minus door \$60.00
13. White pressed steel milk truck fair broken grill \$40.00
14. 999 open spoke engine in C-7+ \$75.00
15. Niax all silver tank car in C-7 condition \$45.00
16. Set #14000 boxed 391 engine, red and black tender, 554 hopper red and yellow, Sante Fe tank, 552 gongola, red and yellow 384299 boxcar and 556 caboos. Set is in C-7 condition all cars 8-wheel one way couple \$225.00
17. Canadian Pacific freight set 7 pieces. Jubilee style engine with gray boiler blue and yellow side boards, Sante Fe tank, C+O blue top reefer, 552 CRIP gondola, 554 Hopper, 556 caboos. All on black 8-wheel trucks with one way couplers. Includes one electric switch, 2 uncouple here tracks, one bumper and transformer. This set is in C-7+ condition no box \$185.00
18. OD 897 windup set with 5 pieces including 500 tender, flat car with nice tank, red handled searchlight car and observation. Engine fair rest VG or better \$350.00
19. Cape Canaveral red tender in exc. condition \$200.00
20. Orange MOPAC cattle car 1 replaced door o/w ex \$95.00
21. Erie flat with gray tractors excellent C-9 \$85.00
22. Like New MOPAC set boxed nicest I've had C-10 \$400.00
23. 5545 flat with burlington trailers one door mis \$55.00
24. 4528 flat with red tractors. C-9 \$50.00
25. 339234 can pac brown gondola C-9+ \$35.00

Here's a little more....

- 26. 2246 military flat with original loads including-----  
duck and searchlight truck excellent cond. \$80.00
- 27. UP brown framed caboose 3900 C-7 condition \$25.00
- 28. Marx accessory catalogue yellow cover exc.con. \$20.00
- 29. 20120 Pacemaker caboose excellent C-9+ \$30.00
- 30. 37963 Merchandise Service boxcar C-7 \$25.00
- 31. 37972 Merchandise Service Boxcar C-8 \$25.00

Playset stuff....

- 32. Zorro Building in excellent condition! \$125.00

Call 417-833-3840  
 or write: Marx Claussen  
 P.O. Box 614  
 Springfield, MO 65801-0614

Here's one last minute addition to this column....

Wanted---MARX plastic Milk tank car, Army Ordinance boxcar, MOPAC yellow and brown cattle car, and Western Auto piggyback. Will pay fair prices. Call 1-800-GOOD-LUK or write: U.R. Naive, 824 Wishful Thinking Lane, Wonderland, USA!

!!

FOR THE DECEMBER ISSUE, WE WOULD LIKE TO RECEIVE STORIES YOU RE-MEMBER FROM A CHRISTMAS PAST. IT COULD BE ONE OF A FAVORITE TOY OR TRAIN YOU RECEIVED THAT YOU ESPECIALLY LIKED OR REMEMBER!



TELL YOUR FRIENDS ABOUT COLLECTING WITH MARX!



LOUIS MARX

August 11, 1896-February 5, 1982

