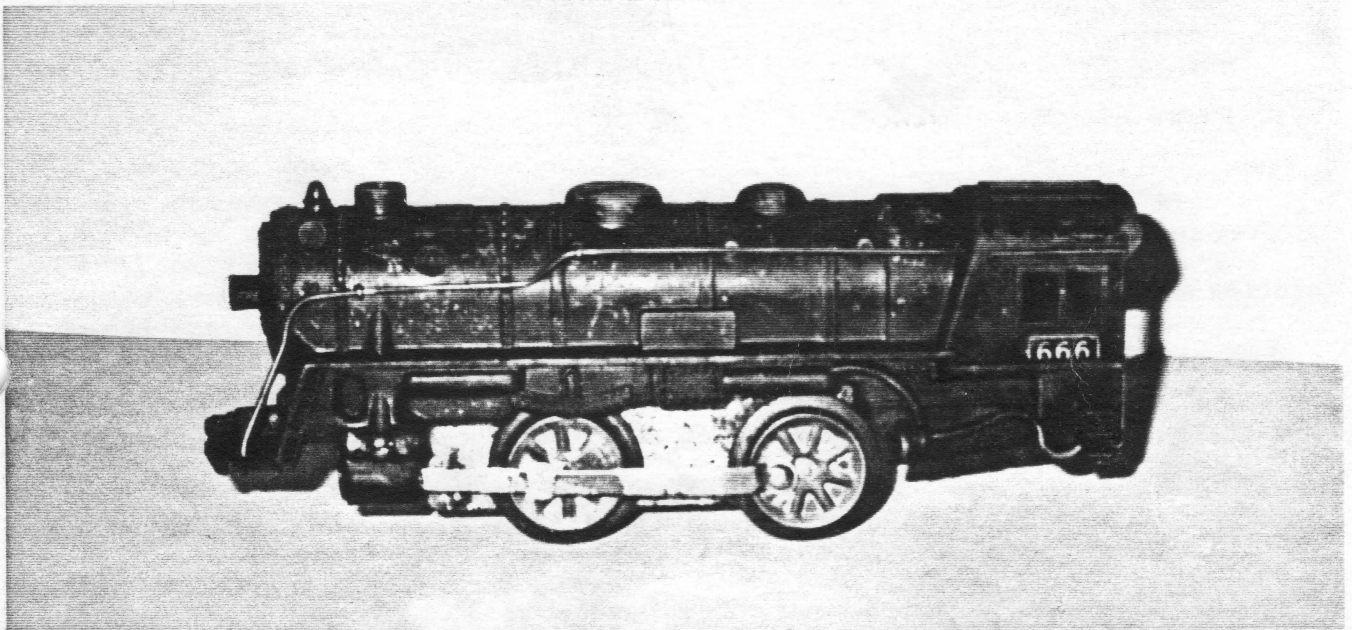


# COLLECTING WITH MARX

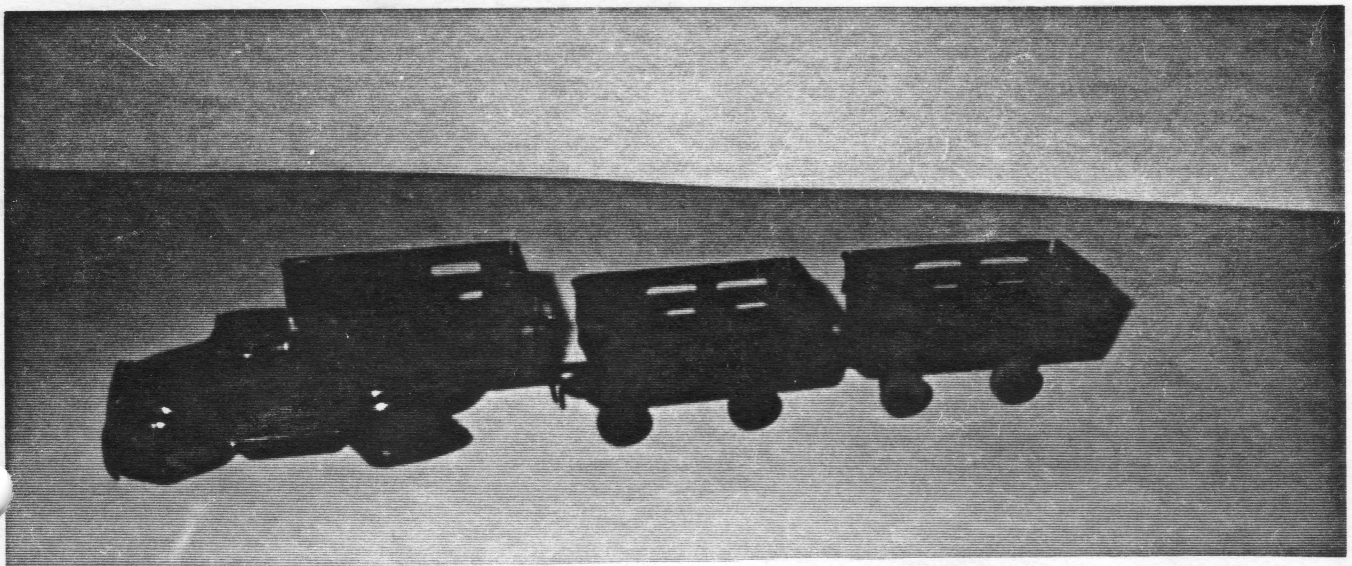
Issue 3

February 1995



666?

999?



ON THE COVER

Perhaps the first usage for what we know as the "999" steam engine. Not a "999" at all! The first "666" may have been the first "999" as well.

AND

The stakebed set is not a load for the trains (that I know of), but is the same size as the Deluxe Delivery 3-piece set shown in many places as a load on the 8-wheel automatic unloading car in OD.

COLLECTING WITH MARX

**SUBSCRIPTION RATES:** \$15.00 per year  
All subscriptions will be mailed on the same day with the same amount of postage to avoid unfairness in delivery. Mail dates will be the fifth day of every other month beginning with the issue #1 October, 1994.

**WITH EVERY SUBSCRIPTION** comes a free ad of no more than 35 words with each additional word costing 10 cents.

**CLASSIFIED ADS** are 10 cents per word with a \$3.00 minimum and no maximum. Columns available are: Buy, Sell and Trade.

**DISPLAY ADS:** Quarter page-----\$10.00  
Half page-----\$18.00  
Full page-----\$30.00  
(Slightly higher if not camera ready)

**PAY-AS-YOU-PLAY:** If you want your ad in the next issue-send the money for it.

**WE RESERVE THE RIGHT** at COLLECTING WITH MARX to print or not print anything that comes into our office.

**INCLUDE YOUR NAME,** address and phone number with every ad or article. Nothing will be printed about you that you do not designate. If you do or don't want your name on an article or other submission just designate so.

**COLLECTING WITH MARX** is not responsible for any errors, accuracy or problems you may have with advertisers in this newsletter. All photos, cartoons and articles become the property of COLLECTING WITH MARX.

<b>AD DEADLINES:</b>	<b>FOR ISSUE</b>
NOVEMBER 5 -----	DECEMBER
JANUARY 5 -----	FEBRUARY
MARCH 5 -----	APRIL
MAY 5 -----	JUNE
JULY 5 -----	AUGUST
SEPTEMBER 5 -----	OCTOBER

COLLECTING WITH MARX  
P.O. BOX 614  
SPRINGFIELD, MO. 65801-0614  
417 833-3840  
6-10 P.M. CST or leave message  
Copyright 1995

If you live in a part of the country where winter has set in you have probably been spending some time with your trains. It's the time of year when there may not be much you can do outdoors so many of us are inside inventorying, counting, sorting, cleaning and weeding out our trains. At my house everytime I do some exploring it's like Christmas. I always find something I don't remember buying or come across some trading material.

"Collecting With Marx" is proud to announce that we are continuing to grow. You have told your friends about us and word is getting out that we are the place to read about what's happening in the world of MARX. I still need to emphasize how important it is for you to continue to tell people about how exciting it is to receive a magazine dedicated only to Marx trains, toys and playsets.

Thanks to all who have sent in articles and contributions. Many of you are very excited to have our own magazine and have expressed a genuine loyalty and desire to keep us a float. For that I thank you. All I ask is that we all continue to work together for a common cause and that is to present a positive look at the hobby we all hold near and dear.

The readers of "Collecting With Marx" are very interested in seeing items "For Sale". The ads I personally ran have been very successful and from talking to others it's obvious that there is a real demand for Marx items. If you have something to sell or trade send in an ad. It's very simple and it doesn't cost much! This is our forum so take advantage of it. Use it!

Which brings me to another question that has come up. I know many of our subscribers and wouldn't worry for a minute about their integrity however many stories are circulating and -- frankly put -- the Marx community is like any other one. It's a buyer beware world out there and it's up to you to do what is necessary to insure that you protect yourself against those that are not on the up and up.

I'd like to take some time to thank one of the MARX community's pioneers. Paul Gailey has been buying and selling MARX trains and toys for many years and has provided a quality service that few have equalled. He has decided to get out of the business and has sold all of his stock and equipment. I personally would like to thank Paul for his encouragement and knowledge over the years. I have made several purchases from Paul and I always looked forward to receiving his lists. One of many things you could always expect from Paul was his grading. Everything I got from him was graded at least what he had said it was. The hobby won't be the same without him. Thanks Paul!

Last Issue's Inside Out story signed Bubba McNoodle was submitted by Richard "Big Dick" MacNary. We had many inquiries as to who was crazy enough to write it? Thanks Dick!

It's a great issue this time, and I hope you enjoy it. I'd like to welcome our new advertisers and thank them for trying "Collecting With Marx".

Have a great Winter and Happy Collecting!

*Marx*

## Circus, Circus --- No Gamble

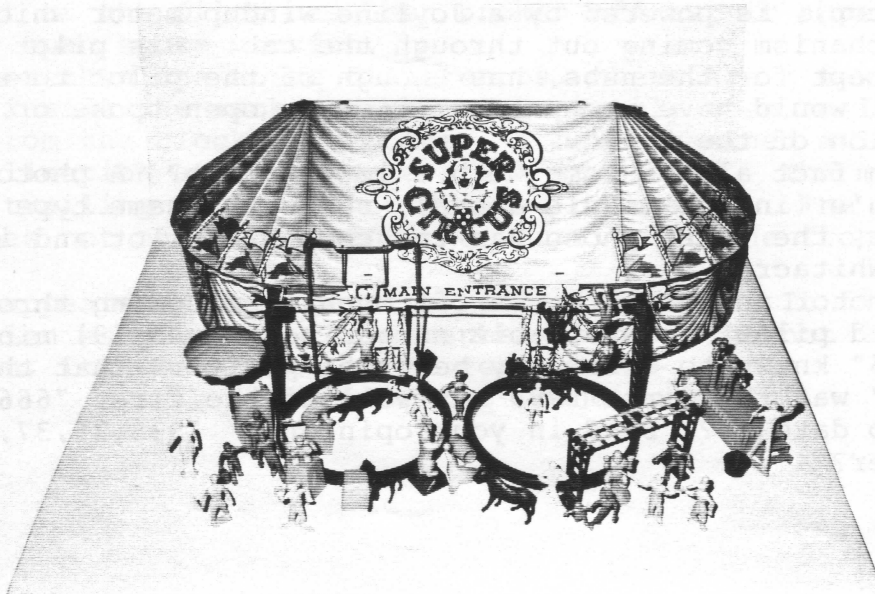
I bought my first Super Circus set in 1982 at an auction. It was a warm summer day and I didn't have much going that day so I thought I'd stay around and see how high the lot of MARX playsets went for. There was a Super Circus set, a Davy Crocket at the Alamo, a Prehistoric playset, a complete set of Presidents, a Capital Building and a box of loose figures.

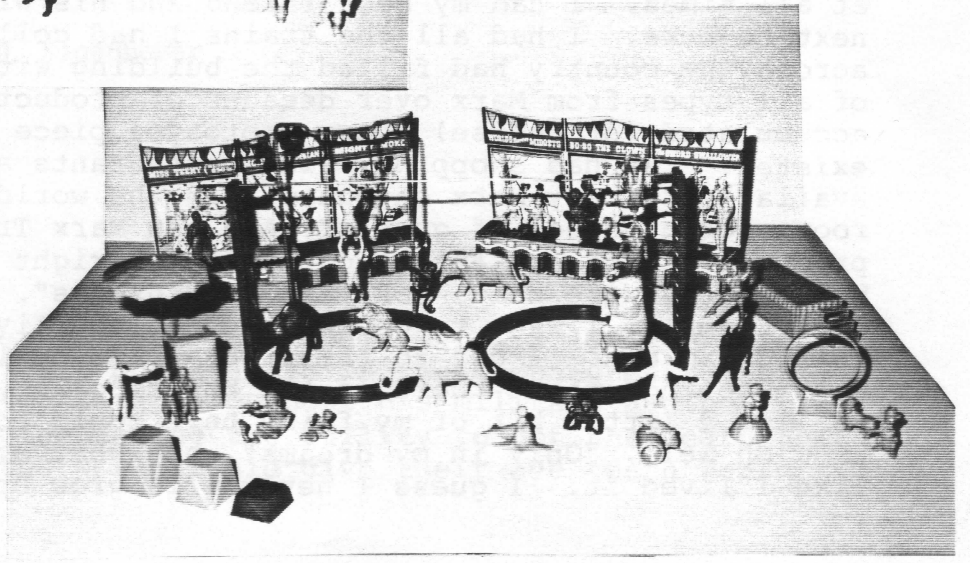
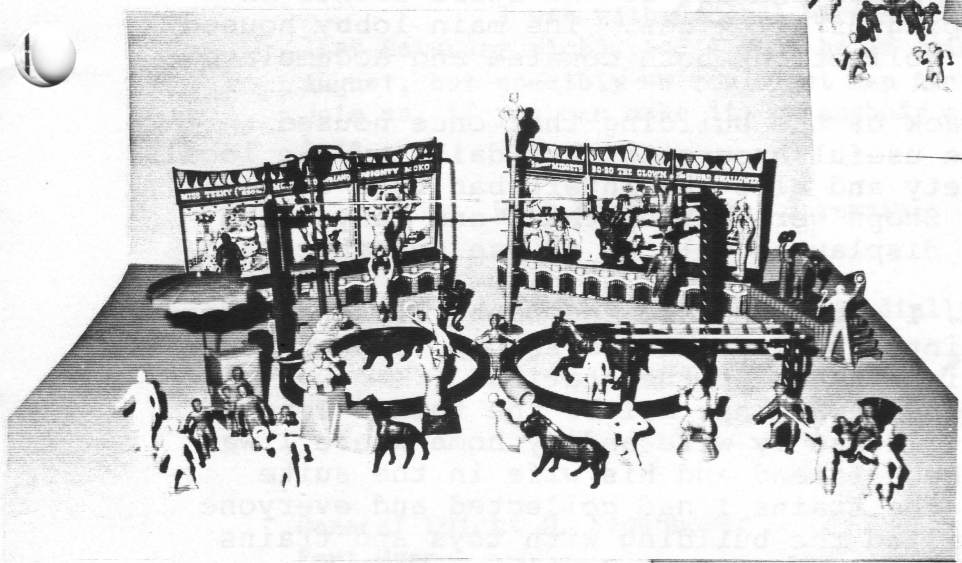
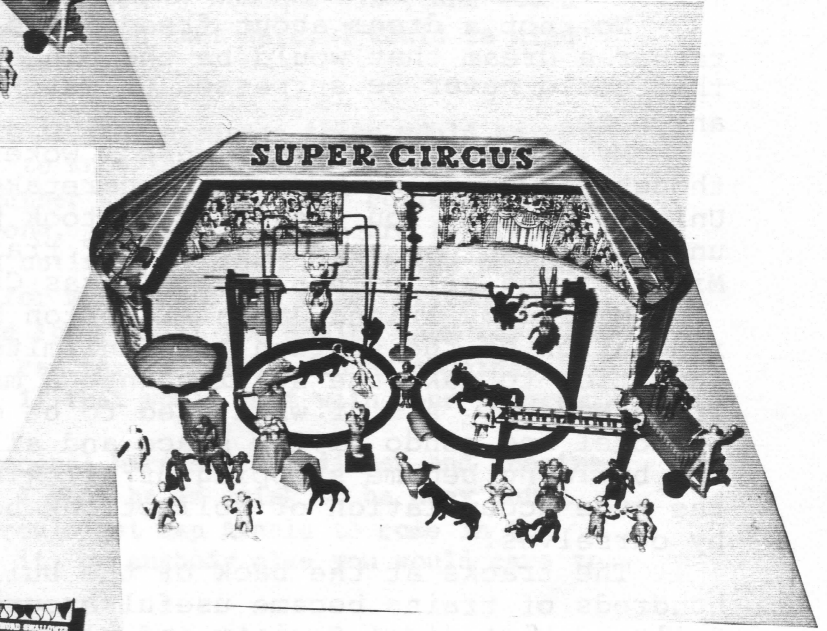
It took most of the day to get to the playset lot in the pile in the corner of the backyard but I think it was worth the wait. You see I was more into trains than playsets and didn't know the value of MARX playsets as I only had a few that I had picked up at sales through the years. Anyway, it came time to bid on the sets and the auctioneer announced he would be selling choice playset or box of figures. The opening bid was \$1.00, I bid \$2.00, then a counter of \$3.00, I bid \$4.00, another counter of \$5.00 and my final bid of \$6.00. Sold! I hesitated and took all but the loose figures in the box. I immediately thought \$30.00 for this bunch of junk. Why did I spend that kind of money for that stuff? Probably more than anything, after spending all day I wasn't going away empty handed. What a gamble!

I got the lot home and sorted everything to find a complete Super Circus set including everything shown on the instruction sheet. There was more stuff in that box than a person could imagine. First there was the tin litho big top with the Super Circus flags and stage stands. All of the animals were there including horses, monkeys, bears, elephants, seals, lions etc. There was a high wire act complete with trapeze artists and many clowns. Two big rings were announced by the ring master and the concessions man sold popcorn as hundreds watched from the bleachers.

This set has enough parts and figures for many hours of play time. My biggest complaint is that I didn't have a Super Circus set when I was small, however today my consolation lies in the fact that at any time I can go into my playset room and conduct my very own Big Top Circus.

As I said earlier I hesitated to spend \$6.00 for my Super Circus set, but it makes me feel better to know that a Super Circus set today is selling between \$400.00 and \$650.00. One figure for the set sells today for what I paid for the set. That means that my Super Circus set was no gamble at all --- it was an investment! A darn good one!







Home Office  
200 FIFTH AVENUE · NEW YORK 10, N. Y.

FACTORIES  
ERIE, PA.  
GIRARD, PA.  
GLEN DALE, W. VA.  
WHEELING, W. VA.

WORCESTER, MASS.  
MEXICO, D. F.  
LONDON, ENGLAND  
SWANSEA, WALES  
DURBAN, SOUTH AFRICA

SYDNEY, AUSTRALIA  
TORONTO, CANADA  
SAO PAULO, BRAZIL  
PARIS, FRANCE

"I HAD A DREAM!"

No, not a dream about freedom and justice for all --- but rather a dream that would be the pinnacle of Marxdom. A dream that could never be surpassed or matched by anyone, anytime, anywhere.

My dream was so real, when I woke up the morning after, I thought I was in my bed in the caretaker's suite at Kansas City Union Station. You see my dream took place at the magnificent, unequalled and now abandoned hub of train travel for Western Missouri and all points west, Kansas City Union Station.

Me and my friend James A. Norton had taken on complete renovation of the station with unlimited funds and it was our intention to make the station into a magnificent MARX Toy and Train Museum. All of what used to be office space was converted to hotel and condo living space and all of the store fronts in the building became shopping of all kinds. The main lobby housed the huge accumulation of collections both donated and accumulated by ourselves.

The tracks at the back of the building that once housed hundreds of trains became useful excursion runs daily by the local Railroad Historical Society and also ran interurban runs on a regular schedule daily. Shops were set up there and many units of rolling stock were on display as well as in use for short and long runs.

Last, but not least, I convinced Jim and Debby Flynn of the new Marx trains to move into the station and set up 100% of new Marx Trains production right there in the station.

The kicker of this dream was that all of the things I hold dear were at my disposal. I had my wife and my home where I was at all times. I had my best friend and his wife in the suite next to ours. I had all the trains I had collected and everyone across the country had filled the building with toys and trains of all types from Marx over decades of production. We had accumulated (of course) every prototype piece - ever to have existed. We had shopping, fine restaurants and a museum all available for any Marx enthusiast in the world to come see. Hotel rooms for hundreds of guests. And new Marx Trains lived and produced all of our future collectibles right there under our roof. WOW! As my wife said, "Only in your dreams".

Frankly, I want to go back to bed and live a little bit of this dream out. I got to thinking --- we could have all of our Marx meetings right there in the building and anyone who wanted to live a little bit of my fairy tale could come and visit.

Oh well, "Only in my dreams", but what a dream! It was like I lived it. I guess I never will grow up!

LOUIS MARX  
200 FIFTH AVENUE  
NEW YORK 10, N. Y.

April 9, 1946

My dear General,

The Louis-Conn fight is due on June 19th and if you have not already been invited by someone else, and would be able and care to go with me on that date, I would be glad to have you as my guest.

I do not know if your presence there would be possible, but I wish you to know that I would be very pleased to have you with me, together with any of your colleagues who you may wish to bring along. I intend to secure ten front-row seats (maybe I am an optimist on this) and at the present moment, I only need one for myself and one other friend, so there are eight available for you, if you desire them for yourself and friends, and we can have a little dinner together before going to the fight, if that would meet with your program.

I was with General Marshall for dinner and theatre last Saturday night, and I know he is going to be away until August, but possibly we could get Hap Arnold to come in to join us, if you can make it, or anybody else you would care to have.

With best wishes, I remain

Cordially yours,

Louis

General Dwight D. Eisenhower  
Fort Myer  
Va.

Above is a letter written from Louis Marx in 1946 to Dwight D. Eisenhower. It's just one example of the company Marx kept. He was very helpful to "Ike" throughout his military and political career. Can you imagine having the ability to get the seats that every boxing fan in the world would give their eye teeth for?

## LATE 1930'S TOYS AND ADVERTISING

I received in the mail not long ago an envelope containing an ad from a 5 & 10¢ store in Georgia. (opposite page top right) The ad is full of toys and a general line of dimestore things. The cover has several Disney characters on it. Pictured inside among others was the ad at the bottom of the opposite page showing two windup Commodore Vanderbilt sets. One passenger 4 piece set with no observation and a very simple 4 piece freight set. Both very common sets but at this point in MARX "TOYTOWN" history there wasn't a whole lot of advertising. For \$1.69 I'll take all anybody wants to ship me.

I got to digging through some things I have and came up with an ad very similar to this ad but mine was from the New York City area. Inside it was a photo of the 10½" truck and trailer set shown below. Just 29¢ bought the three piece set. "Built to haul lots of freight" this set is known to have come in the Deluxe Delivery lithographed set and in blue, olive drab, red, light green, white and yellow. They are the same size as the train load trucks but the stakebeds are larger. They make an excellent addition to any MARX layout. Frankly put I think they're really neat pieces.

One other thing I would like to add is that some of these sets were produced in Cuba. In the 1930's the United States used Cuba as a vacation hide-a-way. People like Louis Marx would go to Cuba to spend some time away from the grind of the business world. Evidently at one point Louis Marx contracted a warehouse in Cuba with unbelievably low labor to stamp out his toys to be sold in the United States. Pictured below is an example of just that. Where it usually says "Made in USA" it says "Made in Cuba".

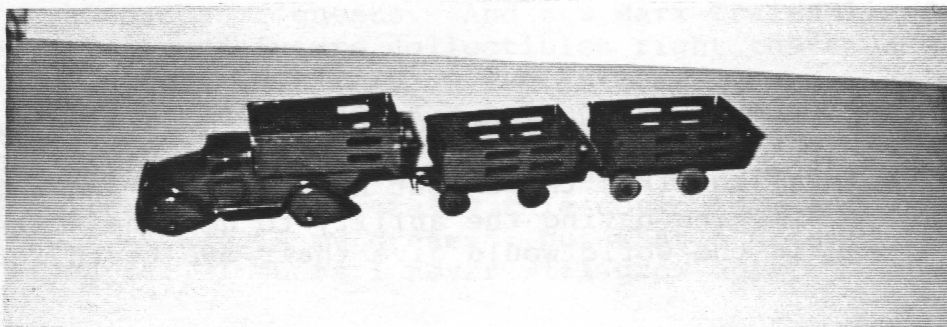
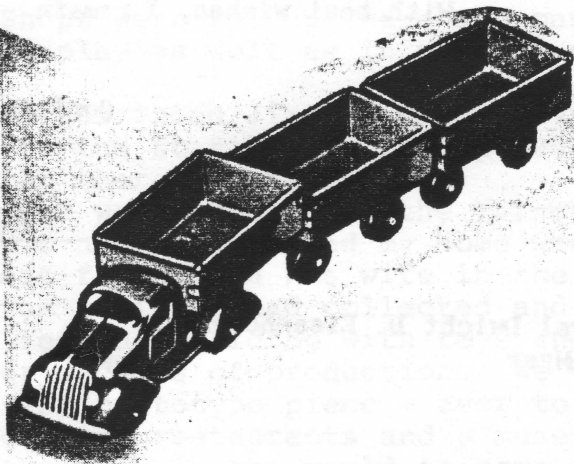
I recently found, at an antique show, a red trailer and two blue ones. I need a blue truck. I think I'll send to Cuba for one!

### 10½ Inch Truck Train SUPER CARGO CARRIER

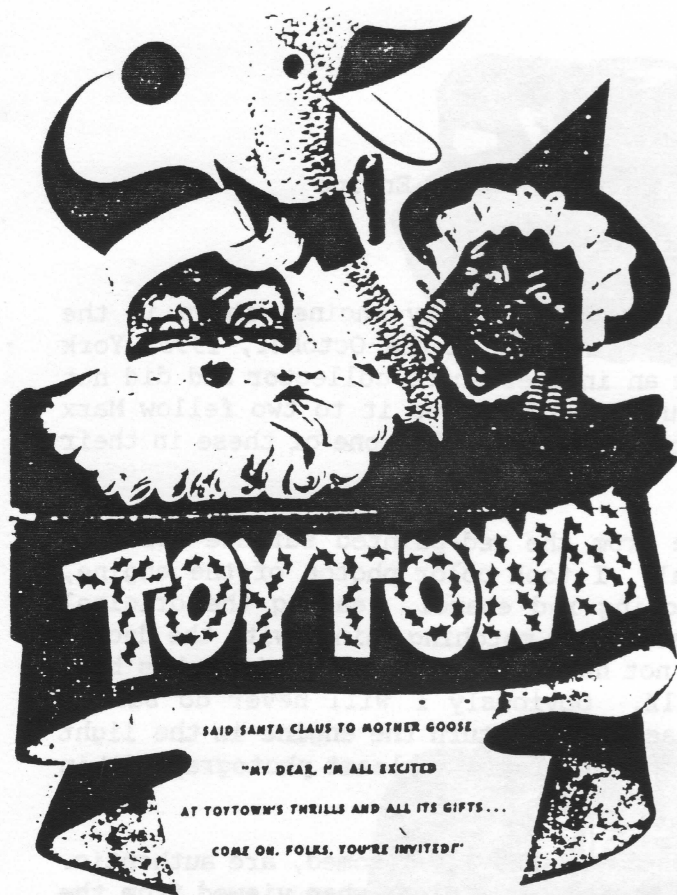
29c

- Three Units Hold Lots of Cargo
- With Couplings, Wooden Wheel

Park this under the Christmas tree and watch your boy beam! Built to haul lots of freight.







SAID SANTA CLAUS TO MOTHER GOOSE  
 "MY DEAR, I'M ALL EXCITED  
 AT TOYTOWN'S THRILLS AND ALL ITS GIFTS...  
 COME ON, FOLKS, YOU'RE INVITED!"

Middletown, N. Y.  
 106 North St.

**W. F. DAYTON'S 5c TO \$1 STORES**

Monroe, N. Y.  
 3 S. Main St.

Warwick, N. Y.  
 32 Main St.

**BEN FRANKLIN 5c TO \$1 STORES**

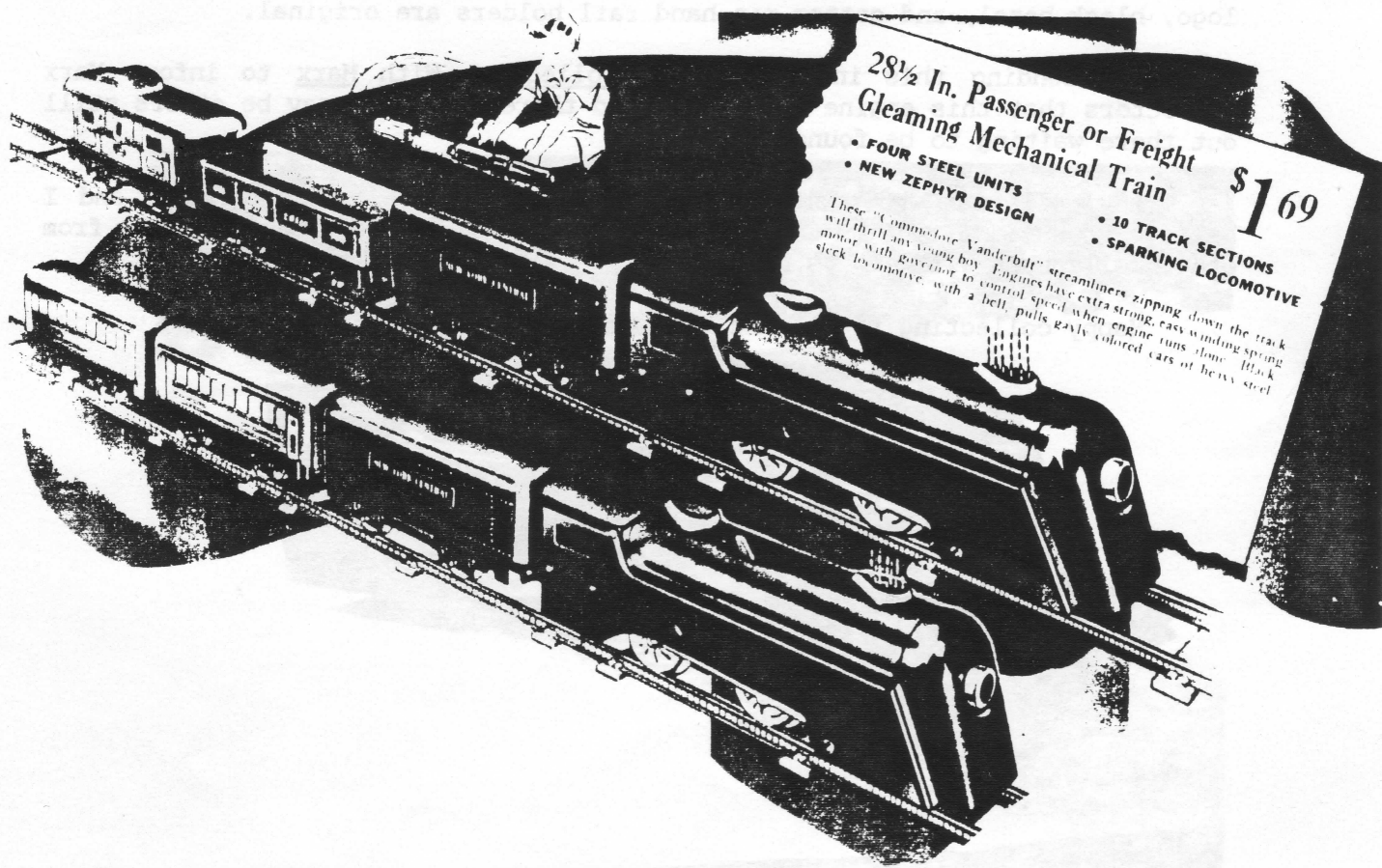
Sackett, N. I.  
 31 Main St.



**MISCELLANEOUS 5 & 10c STORE**

Miss Ardelle Segler  
 OCHLOCHNEE, GA.

TOYS AND GIFTS FOR THE WHOLE FAMILY



28 1/2 In. Passenger or Freight  
 Gleaming Mechanical Train

**\$1.69**

- FOUR STEEL UNITS
- NEW ZEPHYR DESIGN

- 10 TRACK SECTIONS
- SPARKING LOCOMOTIVE

These "Commodore Vanderbilt" streamliners zipping down the track will thrill any young boy. Engines have extra strong, easy winding spring motor with governor to control speed when engine runs slow. Black sleek locomotive, with a bell, pulls gaily colored cars of heavy steel.

Existence of a Marx Three-Domed Mercury Engine

by Lee Reynolds, T.C.A. #87-26547

I bought the three-domed, decal-nosed red Mercury engine, shown in the accompanying pictures, in the Sheraton parking lot at the October, 1990, York meet. At the time I purchased it, I was an inexperienced collector and did not realize that it might be unusual, although when I showed it to two fellow Marx collectors, they told me that they did not believe they had one of these in their own collections.

Soap and water cleansed the grime from the red-painted surface but also revealed innumerable spots of bare metal. I took color photos of the engine, then filled in the bare spots with matching red enamel, leaving the original paint undisturbed. I repeated the process, using matching paint, with the decal. Nobody has to tell me now that I should not have done this, and nobody has been harder on me than I have been on myself. Obviously I will never do such a foolish thing again. However, all one has to do is turn the engine in the light to see all of the original paint and decal, and I did at least photograph it in its found state.

As far as I can determine, the three domes, heavily chromed, are authentic. The untouched stampings for the tabs are particularly clear when viewed from the underside. The yellow and black decal appears completely authentic as well.

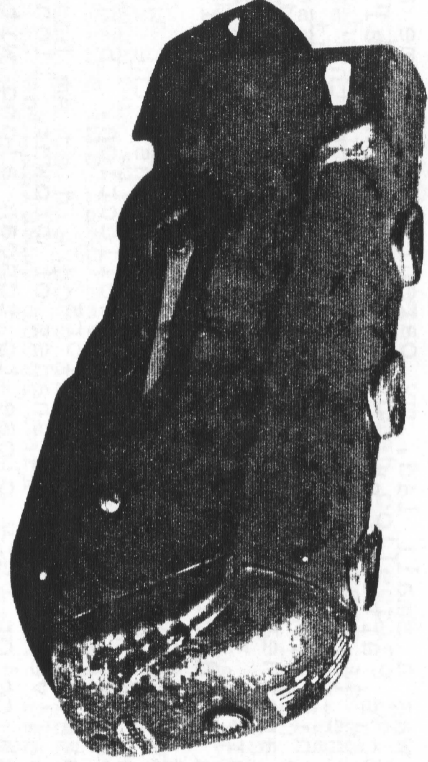
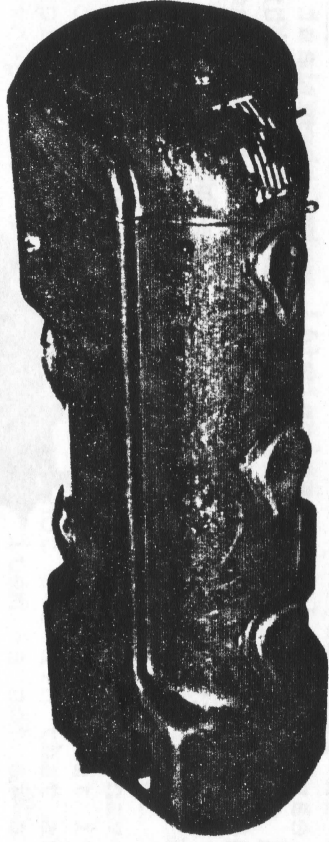
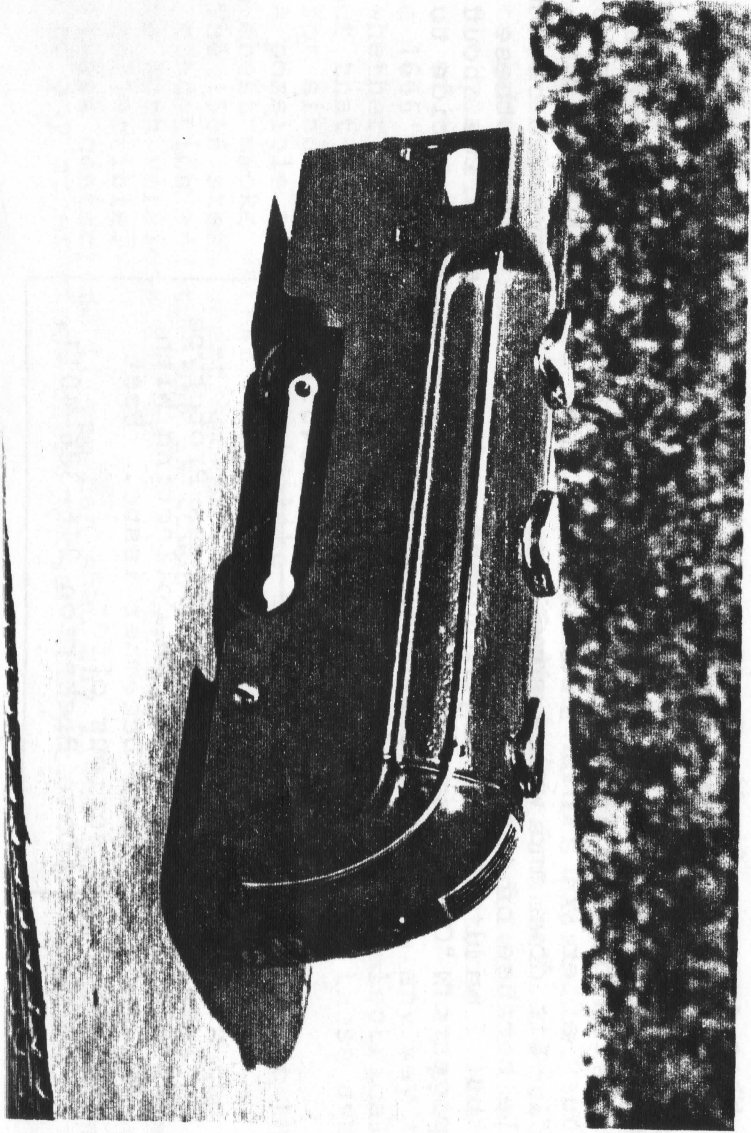
For the record, this is a Marx three-domed electric<sup>all-</sup> red Mercury with a drawbar and a pre-war (three-piece pickup) motor. It had no tender when I found it. The engine has an electric bulb in the nose, and the gold New York Central logo, black bezel, and cotter pin hand rail holders are original.

I'm sending this information to Collecting With Marx to inform Marx collectors that this engine does exist and therefore there may be others still out there waiting to be found.

Any collector who wishes may examine this engine under a light, and I believe he/she will confirm that my description of it is accurate. Comments from other collectors will always be welcome.

Happy collecting to all and with greatest respect,

Lee Reynolds, 87-26547



## A SPECIAL PLACE FOR A SPECIAL PIECE

By: John Torgerson

When I was a small lad, my parents bought me a red hand car. Boys being boys, after a short run around the oval, it was necessary to explore the interior. It was never quite the same after that! In fact, within a month or so, the poor thing passed on. It was replaced by another red one which, having learned my lesson, lasted for many years. It's unfortunate demise occurring after my four year old son laid claim to it and decided to see if it could be push started in the back yard. Oh well!

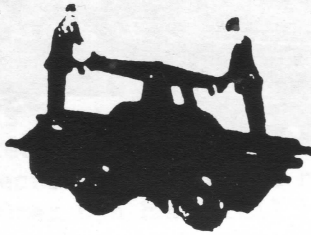
After I started collecting Marx trains, the 2002 hand car was one of the early items to join my collection. Since then, I managed to obtain several in various colors.

So far, I've counted 4 shades of brown: light, medium, dark and a reddish color very close to tuscan along with the aforementioned red. Also the men seem to be gray, blue and yellow.

The early brown ones have one collector for the center rail. This seems to have lasted for only a year or so. Problems with center rail pick up made it necessary for Marx to add a second center rail collector, making operation much better.

If these small motors are kept well lubricated and clean, they will last as long as any 999 or 666. The motors are delicate but proper cleaning and lubrication will make them last for years.

When you run your trains, put one of these little gems on the track and run it around a couple loops. It'll bring a chuckle watching those two little guys pump like mad.



---

### WE WANT TO HERE FROM YOU!

What are you finding? What do you want to know about? I know our readers are the MARX experts, but there must be a few things you have a question about or something you have experienced you would like to share with our readers. Also if you have paper that we can present in the magazine send it in. It's very simple! Get busy after you finish reading this copy of "Collecting With MARX". Sit down and write something. I don't always get back to people because of the expense of phone calls and postage these days but I will address anything and everything you write about in the pages of "Collecting With MARX". Send your presentation to

Collecting With MARX  
P.O. Box 614  
Springfield, MO 65801-0614  
or call 1-417-833-3840.

#### FOR SALE

Marx Bunny Express Prototype  
pictured in Collecting With  
Marx December issue. Best  
serious offer.  
Dave Bickerton 216-386-4011.

## WHAT ARE MARX COLLECTIBLES?

By: Harris M. Spanier

As a post war baby boomer I have been collecting Marx trains for a relatively short time - 5 years. My interest in Marx is mainly trains and train related items. The specific area of my interest is, "What will be the more desirable Marx train collectibles in the future?" Do I have genuine expertise? Probably not, but, it is enjoyable and isn't that what it is supposed to be all about?

My interest in Marx was stimulated by a friend who was and continues to be generous with his time and knowledge as well as being willing to share his fascination with Marx trains. Several years ago he invited me to his home and shared his collection, and most importantly his enthusiasm, about Marx with me. Previous to my friendship with John Fox I was mostly interested in Lionel. At this time I collect both, but, I must admit I only collect what interests me in either one. Basically, condition and originality is everything to me.

One of the areas of collecting Marx that interests me is the variations of somewhat difficult to find trains. For example, take the die cast 666 and its similar plastic cousin, the 1666. Certainly there are variations of each but I have found the steam chest smoke version of both is particularly intriguing.

The 1666 with steam chest smoke is certainly available but not easily found. I don't see it too frequently at Chicago area shows nor do I see it on mail lists. Finding it without broken steps, and with all the grabs to hold the handrail is a bit taxing but possible.

On the other hand, the die cast 666 steam chest smoker is a different story. It is not only difficult to find but I haven't been able to find anyone who will unequivocally agree that it exists and isn't made up! (For that matter I am not certain that anyone really cares - except me! Interest in this item is not at a fevered pitch). "Experts" say its existence is highly probable but I haven't found anyone to agree that it comes from the factory in that manner. Does anyone have a set with it in it? Can anyone verify it exists? I have spoken with quite a few collectors and I would like to clear up the "does it exist mystery?".

In Greenberg's Guide to Marx Trains, Volume III, the following sets are listed as coming with steam chest smoke:

666 Die Cast Steam Chest Smoker: 9617 B

1666 Plastic Steam Chest Smoker: 9619 B, 9719, 9714.

All are listed as Allstate Sets (Sears) but names are not listed as to the owners of the sets. I have spoken with the author and still no real clarification is available as to its existence.

Does anyone have a set with a 666 die cast steamer? I would like to know what yours includes. I would like to determine the specific years it was offered and when it was manufactured. What percent of the die cast 666's are steam chest smokers? What percent of the 1666's were produced with steam chest? Is there any way to know whether one has been created other than the brass electrical contact that extends from the front light? Were any of these available for single unit sale?

A possible avenue I would like to investigate is who cast the steam chest smoke units? Any leads?

The 1666 steam chest smoker is a tough piece to find in the right condition and the 666 is tough to even prove it exists! I believe both versions are quite collectible and manufactured by Marx. It is collectible.

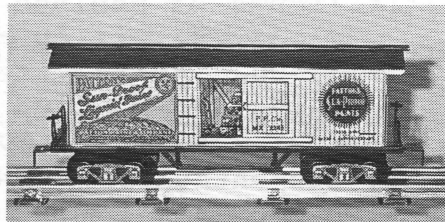
Please contact me if you can shed any light on the questions asked or any other steam chest smoker insight. 708-957-3396.

# Travel Through Time With . . .

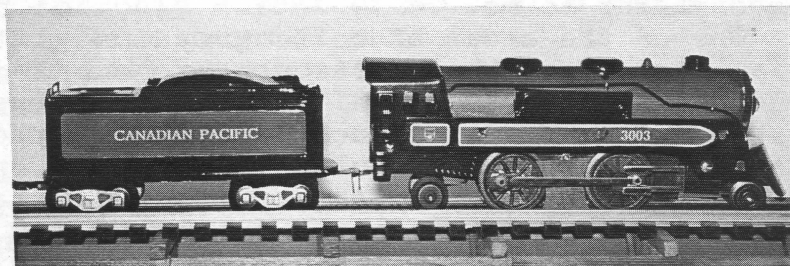
**MARX TRAINS**

TM

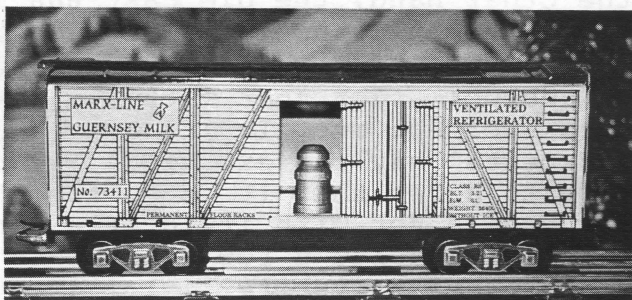
**1860**



**1930**



**1950**



**1990**



**Ride The Marx-Line into a New Age of Tinsplate™**

Quality Tin Lithographed Trains and Accessories Proudly Made In the U.S.A.

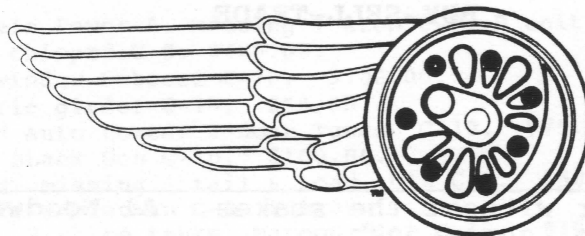
- Call or Write for Information -

**MARX TRAINS - 209 E. Butterfield Road, #228 - Elmhurst, IL 60126**

**Phone (708) 941-3843 - FAX (708) 941-3829**

ADULT  
COLLECTIBLES -  
NOT INTENDED  
FOR CHILDREN





*The  
Robert  
Grossman  
Company*

PARTS FOR MARX TRAINS  
WILL CONTINUE INTO THE FUTURE.

HI FRIENDS

FOR SOME TIME NOW I HAVE BEEN WORKING WITH PAUL GAILEY , CREATING QUALITY PARTS AT A REASONABLE COST FOR COLLECTORS, HOBBIEISTS, AND REPAIR PEOPLE. MY LIVING DOES NOT DEPEND ON TRAIN PARTS , THEREFORE MANY ITEMS HAVE BEEN PRODUCED WITHOUT ANY REGARD TO HOW PRACTICAL AN ITEM MAY BE.

MY FREIND , ED GABRENYA HAS PURCHASED ALL OF PAUL GAILEY'S INVENTORY AND TOOLING. WE ARE GOING TO CONTINUE TOGETHER AND OPERATE UNDER MY NAME AND ADDRESS AS BEFORE. THIS WILL ALLOW ME TO CONTINUE WITH MY SAME BASIC IDEA OF WHY CERTAIN PARTS SHOULD BE MADE , AND WHAT IS BEST FOR THE COLLECTING COMMUNITY.

PAUL HAS TAUGHT ME ALL ABOUT QUALITY, SERVICE, AND INTEGRITY AND I INTEND TO CONTINUE ON WITH ALL THAT HE HAS CREATED.

FOR MY FREE PARTS LIST SEND A LSASE. THANK YOU.

TAKE CARE,

ROBERT GROSSMAN  
857 E. 237th St.  
Euclid Ohio 44123  
(216) 261-0531

BUY-SELL-TRADE

WANTED

---

#2700 Scale Flat Car without the stakes. Al Woodward, 6440 31st St NW, Washington DC 20015-2342.

---

Deluxe Delivery 4" Truck. John Torgerson, 2712 Del Ray Ave, LaCrosse, WI 54603. 608-783-3785.

---

FOR SALE

---

999&951, Red Crane, 3/16 Search Light, 2-#2700 Flats, NYC Caboose, Set G+ to VG \$235.00.

90171 BLE Orange, roof painted black, G+ \$25.00.

UP 3824 Caboose Brown Frame, VG \$20.00.

Monon C-350 Red, EX \$25.00.

Monon 82 8wheel B 1 side VG the other side fair, good shelve piece, \$40.00.

234 USA Broken Stack, G+ \$20.00.

Call Steve Anderson 307-682-2504.

---

Send name and address for next Marx Train list. Mary Jane Carver, 305 Buford Avenue, Gettysburg, PA 17325.

---

Parts for Marx Trains and Accessories. Please send a LSASE with one stamp on it for my latest free parts list. Robert Grossman, 857 East 237th Street, Euclid OH 44123.

---

Model Power Battery Operated 4wheel Santa Train using Marx dies. 4wheel Switcher, "North Pole Express", Green; Gondola, green, "Holiday Express"; Boxcar, white, Santa sticker; Caboose, red, "North Pole Express". \$20.00. Gary Anderson, 218-478-2711.

---

Loco's, Steam, Diesel, 6" Cars, 8wheel Plastic, Passengers, Boxed and Unboxed Cataloged Sets. Accessories. Most in EX. and Like new. Send LSSAE for list. Vince Baniewicz, 4765 Richmond St., Philadelphia, PA. 19137. 215-288-7357. T.T.O.S. # 15123.

---

MY GRADING SCALE

- C-1 Worthless except to recondition.
- C-2 Poor - Rusty and /or scratched good for parts.
- C-3 Fair - Desirable only til another comes along.
- C-4 Good - Played with - scratches - dings -wear - parts missing.
- C-5 Good - Played with - scratches - dings - wear.
- C-6 Very Good - nice collectible - much play wear.
- C-7 Excellent - moderate play wear.
- C-8 Excellent Plus - very light play wear.
- C-9 Like new - very light wear in original packaging.
- C-10 Mint - Unplayed with in original packaging.



For Sale

Allstate Diesels Power A, missing 1 step C-8; B unit C-9; Dummy A, rear overhang chipped C-8. \$400.00.  
 Allstate Bay window Caboose C-10. \$100.00.  
 5545 CB&Q w/Erie girder C-10. \$50.00.  
 20053 Seaboard Auto Boxcar 4 door Tuscan C-10. \$75.00.  
 39520 SP Flat Black Gen C-10. \$100.00.  
 74563 All, Red, missing 1 rail & Load, Dlx C-9. \$50.00  
 43461 PFE White W/blueman C-8 \$30.00.  
 5543 Allstate, 2 white tanks, Maroon Flat C-10. \$100.00.  
 3280 Orange SF Deluxe C-10. \$20.00.  
 54099 Green MP Stock, one repl door, onc chipped, deluxe w/cow C-7. \$90.00.  
 5532 Allstate, Deluxe, Turq C-9. \$10.00.  
 1998 AT&SF Maroon w/sound C-10. \$100.00.  
 1998 AT&SF Black C-9. \$85.00.  
 347100 PRR Gon, gray deluxe, C-9. \$15.00.  
 4528 Eric Flat w/side rails, deluxe C-9. \$15.00.  
 21429 Black/orange deluxe C-9. \$25.00.  
 44535 SAL Flat, gray, orig. load & ties, Deluxe C-9. \$85.00.  
 4586 UP work cab, dark red w/searchlight, deluxe C-10. \$50.00.  
 4566 CWEX med blue, gray reels, orig tie, deluxe C-9. \$85.00.  
 1998 UP yellow tan C-9. \$70.00.  
 2225 SF Baywindow cab, deluxe, repl ant. & stack C-8. \$40.00.  
 Eric Flat, med 2 red tractors C-7. \$30.00.  
 147815 RI box, deluxe tuscan C-9. \$50.00.  
 13975 ATSF yellow stock deluxe, chipped roof walk otherwise exc. \$45.00.  
 1095 SF stencilled, gray (1096) B unit all steps, horns C-9 \$100.00.  
 249319 Marlines Box, red, w/man, deluxe C-9 \$35.00.  
 249319 Marlines Box, white, w/man, med C-9. \$35.00.  
 18326 PC cab, med, tuscan C-10. \$10.00.  
 5595 SERX Box, deluxe, w/blueman C-7. \$15.00.  
 13975 SF box (cattle) yellow, deluxe C-9. \$90.00.  
 467110 BP blue box, med, C-9. \$10.00.  
 Call for availability - All prices plus shipping.  
 James A. Norton, 1300 Fifth Ave., Leavenworth, KS 66048-3202.  
 913-682-2071.

\*\*\*\*\*

FOR SALE

Red MOPAC Cattle Car C-8	10.00	254000 B&O Gondola C-6	15.00
Red & Silver M10000 Obs C-6	20.00	4 English Coaches Brown & Cream C-3	100.00
Red & Silver M10000 Coach C-6	20.00	3280 Santa Fe Boxcar C-7	10.00
999 Engine C-6	15.00	Rock Island 17858 4-wheel C-5	15.00
NIAX 256 C-5	10.00	#5 Denver & Rio Grande Articulated C-5	35.00
Southern Pacific 7" Caboose C-5	10.00	#242 Sparkling Friction R.R. C-4	15.00
NIAX 256 C-8	15.00	556 Caboose w/Red Litho Frame C-5	15.00
NIAX 256 Silver on Silver C-7	45.00	NYC Deluxe Black & Gray Crane Car C-5	15.00
4427 White on Tuscan Caboose C-8	20.00	NYC 8 wheel Black & Gray Crane Car C-5	15.00
1977 ATSF Yellow-Red-Gray C-8	25.00	Electric Commodore C-5	20.00
Red Cape Tender C-8	75.00	#20120 Pacemaker Caboose C-7	25.00
51170 Erie Black Gondola C-8	10.00	37972 Merchandise Service Boxcar C-6	15.00
43461 Reefer White PFE C-8	12.00	37961 Merchandise Service Boxcar C-6	15.00
Flat w/Red Tractors C-8	25.00	UP Caboose Brown Frame C-5	20.00
2246 Flat w/3 Broken loads C-4	25.00	90171 Brown Bessimer Minus 1 door C-2	15.00
UP 6" Caboose C-5	3.00	Penn Central Caboose 18326 C-7	10.00
		Pennsy Gondola 347100 Gray w/red C-7	10.00

Have Red Airplane will trade for #5 Tank Flat ONLY.

Will trade this stuff for English Marx Trains or Marx Playsets or Figures.

I ran across a tin litho sheet of crossing shantys great for framing 75.00.

HO Trains and Race Car sets for sale. List to be mailed Feb 15th. Send LSASE.

Collecting With Marx  
 P.O. Box 614  
 Springfield, MO. 65801-0614

417-833-3840



TOYS and TRAINS  
TYPEWRITERS Sales & Service  
CHRISTMAS ITEMS



## CARVER'S • TOYLAND

OPEN 9-5 Mon.-Fri. • 9-1 Sat.  
PHONE 717-334-6937 • FAX 717-334-5789

305 Buford Ave.  
Gettysburg, PA 17325

MARY JANE & DON CARVER, JR.  
PHIL HENRY

(located 4th house west of PIZZA HUT on US 30 West in Gettysburg)

Please send name & address for next Marx train list.

COLLECTING WITH MARX  
P.O. BOX 614  
SPRINGFIELD, MO 65801-0614



Steve Eckel  
1652 Concord St S  
South Saint Paul, MN 55075

WORLD'S LARGEST MANUFACTURERS OF TOYS