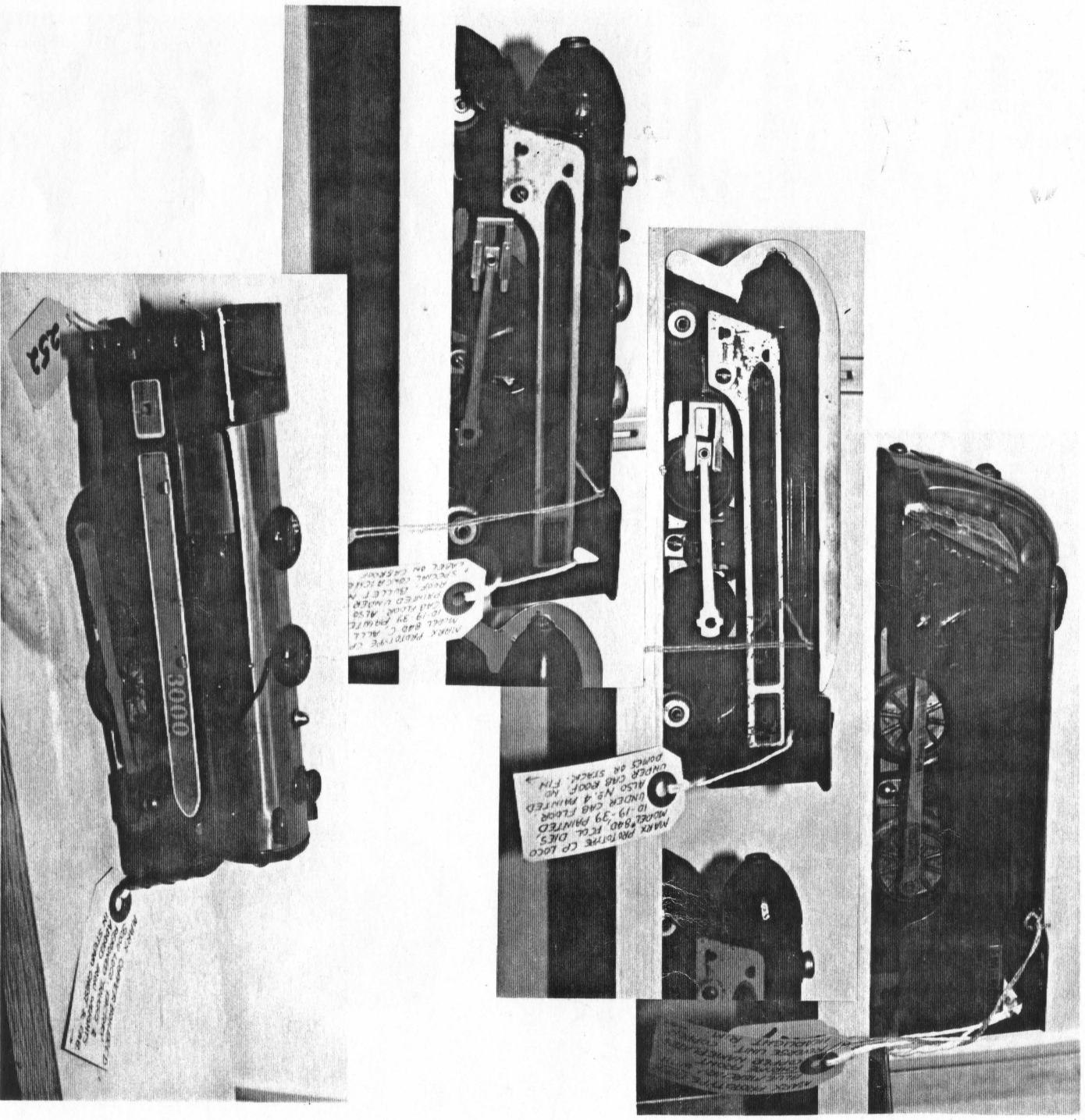


COLLECTING WITH MADIX

Issue 21

February



COLLECTING WITH MARX

SUBSCRIPTION RATES:

\$18.00 per year

All subscriptions will be mailed on the same day with the same amount of postage to avoid unfairness in delivery. Mail dates will be the fifth day of every other month.

WITH EVERY SUBSCRIPTION comes a free ad of no more than 35 words with each additional word costing 10 cents.

CLASSIFIED ADS are 10 cents per word with a \$3.00 minimum and no maximum. Columns available are: Buy, Sell and Trade.

DISPLAY ADS: Quarter page-----\$10.00
 Half page-----\$18.00
 Full page-----\$30.00
 (Slightly higher if not camera ready)

WE RESERVE THE RIGHT at COLLECTING WITH MARX to print or not print anything that comes into our office.

INCLUDE YOUR NAME, address and phone number with every ad or article. Nothing will be printed about you that you do not designate. If you do or don't want your name on an article or other submission just say so.

COLLECTING WITH MARX is not responsible for any errors, accuracy or problems you may have with advertisers in this newsletter. All photos, cartoons and articles will not be returned.

Collecting With MARX
 7475 E. State Hwy YY
 Springfield, Mo. 65802
 417-866-1068
 6-10 P.M. CST or leave message
 FAX # 417-866-1068
 Copyright 1998

On the cover.....

Pictures sent by Bob Burgio from a recent auction. Three prototypes--A Blue Mercury with nickle nose, Two prototypes bullet nose engines and a beautiful copper 3000 with blue side boards. The Auction brought prices only a true MARX Collector would pay!

Here are Louis Marx and Lauren Micah. Louis is concentrating on his MARX red Jubilee style engine pulling a few 6" cars. Lauren has a smile that lights up a room. They grow up fast!



Hello Everyone,

It's been a real pleasure, visiting with you this past month. People are finding lots and lots of good train pieces and MARX train collecting is enthusiastically at an all time high. While pieces may not be as plentiful or as easy to lay hands on as they once were it seems as though those who are finding pieces are finding good ones. I can't stress it enough people -- you have got to consistently beat those bushes week in and week out to find something occasionally.

I haven't found anything at the antique and flea market level. Through auctions I was able to purchase a Walgreens trailer with no cab and a closed spoke 999 both of which I have but the price was good so I bought them.

My next train show is Feb. 15. This show is a show where you could walk away empty handed or leave with a pile of stuff or anywhere in between. I have bought rare, unusual and one-of-a-kind items at this show. You just never know. One of the fondest stories from this show comes to mind. I'm walking down the aisle at this show and I here my name being almost screamed out across the convention center. I don't know whether or not to run or try to find out who is calling me. I look over about two aisles and my good friend Jim Norton is holding a green Commodore Vanderbilt in his hands and there are about three guys trying to get him to put it down or drop it. He owns one at this time so he is calling me to come buy it. He didn't have any cash with him he left it with his wife Ginny. The man was only asking \$35.00 for the engine (in very good condition) and about 3 or 4 Joyline cars in rough condition. I ran over to the table to give him a hand and successfully managed to complete the purchase. We tease about Jim having to wrestle several guys to keep from losing it. And I even hear the story that he even nabbed it right out of the clutches of another poor MARX collector!

I trust that each one of you is in good health and things are going well. Many of you have expressed that this has not been a good winter so far and that working on your layout or playing with MARX trains has been very therapeutic and has helped get you through some trying and difficult times. Anything you enjoy doing can help in this way but I am very thankful to have my hobby to lean on.

I have heard many times lately that collectors of other brands are becoming very interested in MARX trains and while the values of Lionel and American Flyer trains are not set in concrete MARX trains values are continuing to climb. The common trains are even drawing higher prices on the internet.

I am very proud of the reader response we received from our last issue. Please continue to help us answer questions from readers. I am no expert but with your help we can satisfy everybody.

I have changed my address effective immediately and my telephone is different. Use the new ones for all replies now.

Collecting With MARX, 7475 E. State Hwy YY, Springfield MO 65802.
417-866-1068.

Here's wishing all of you a great, happy and healthy collecting year!

Manx

Enclosed are pictures of Plastimarx toys made in Mexico. That Collecting With MARX readers maybe interested in.

1. Is a "Honeymoon Express" type windup train - The litho is similar to the middle US production. The station in the center is lettered Guadalajara and has an on-off lever. The M10000 type train is lettered Azetca Nacionales DeMexico. This very colorful toy has an enclosed base. There is at least one other newer variation.

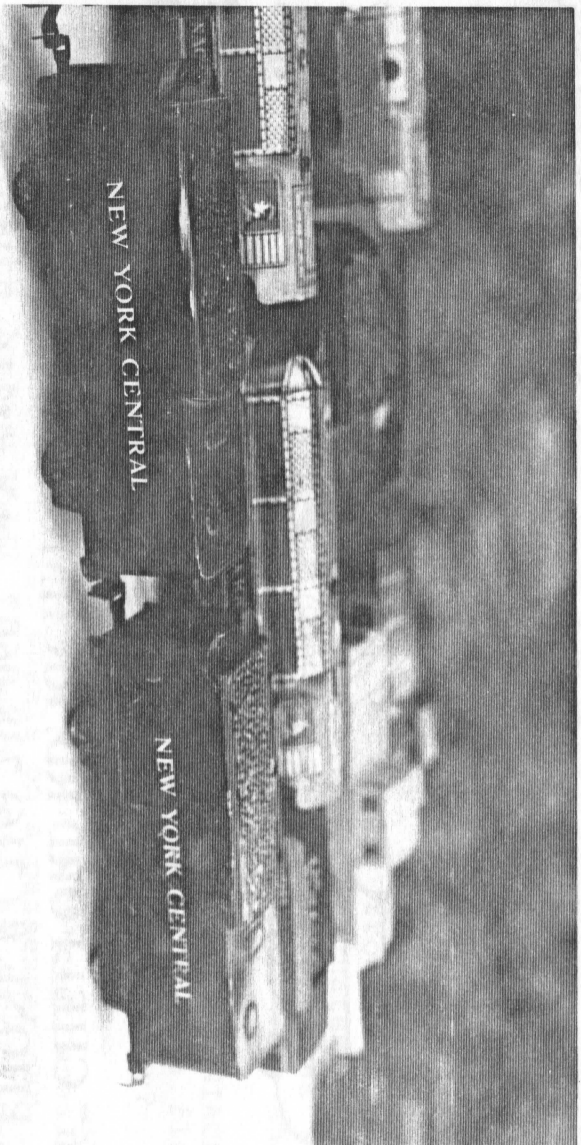
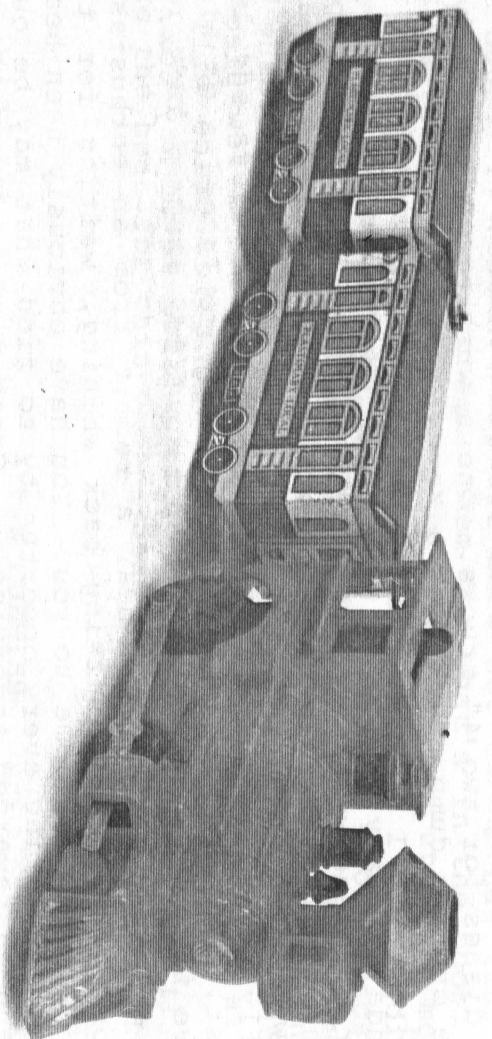
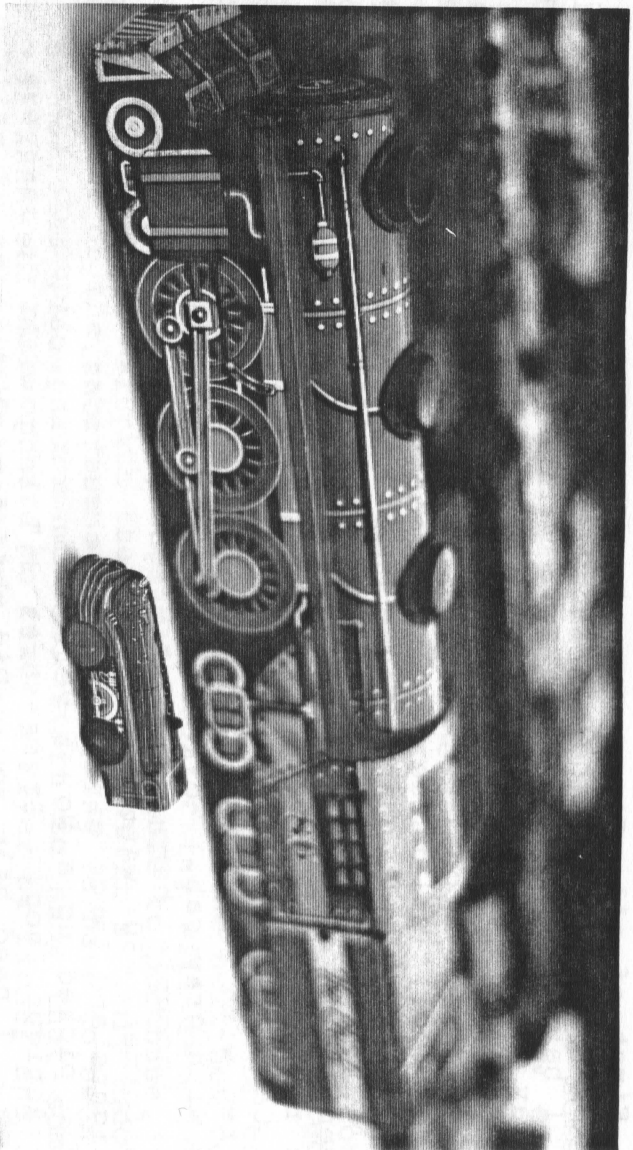
2. Picture shows the large and small of lithoed Plastimarx production. The large push floor toy has a flywheel motor and bell. On the boiler front is numbered 3902 but under the cab 86 appears. The Chief is found on the tender. The wheel arrangement would be a 4-6-4-4 with the two 4 wheel trucks under the cab. The Plastimarx trademark is on top of the cab. As the picture shows, it is fairly large compared to the almost 'N' gauge size channel or floor train in front. This #376 windup shares the same litho as it's US counterpart, but has a Plastimarx trademark on its cab roof. This one has red wheels - while my US engine has black.

3. Is the battery operated Plastimarx Local similar to the Marxville Local in the US. The engine can either be black or orange with gold trim. Al Osterud has found four variations in the lithoeing of the cars. It probably came with a cabin and cowboys and indians. The motor is a "can" type, different from US production.

4. Is of the 7" metal lithoed New York Central tenders made in Mexico. This car does not have a trademark and comes with metal tab and slot couples. It is pulled by a die cast 999 and used in a freight set pulling 7" 4 wheel cars.

Pictures courtesy of Gary Anderson.





First of all, I want to wish the Claussen family good luck in their new home. "Get those trains unpacked!"

I have an update on some of my finds these past few months. A one day trip to Kittery Maine got me two 8 wheel CP passenger cars, a No. 250 Winnipeg and a No. 246 Montreal. Both are tab and slot in very good condition. Also I got a No. 357 Joyline coach, green with the red roof. All three cars were reasonably priced.

In Conneticut at an Antique Shop. I got a plastic diesel freight set No. 33984 which is not listed in Greenburg's blue book Vol III. Contents are: Locomotive, No. 1998, SF, S-3, Maroon switch engine with roar sound. Flat Car, No. 4566 CWEX light blue with grey reels. Flat Car, No. 4571 WECX, red with search light. Flat Car, No. 74563 ACL red with red rails. (Wood load missing). Crane, NYC long black base with gray cab. Work caboose, AT&SF tuscan brown with tool boxes. Sign, uncouple here. Block signal, No. 1404 A position light. Transformer, 50 watts with re-set circuit breaker. Track, 12" straights and large circumfret curve sections.

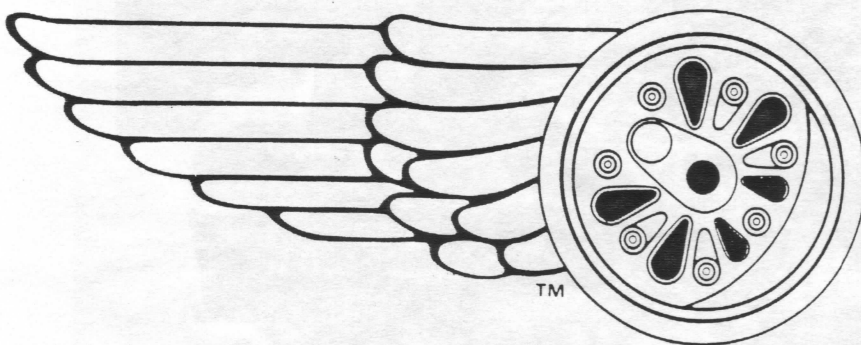
I picked up a No. 6 yellow tin racing car, friction run at the same Antique shop. It measures 3½" long with the MARX logo on the bottom. I need help now. Did this come with a race set? What year? My guess is it was made in the 50's or 60's era. The price was only \$1.00.

I made a nice trade with one of my neighbors. I traded some Cape Cod red dishes for two 4" trucks. One a wrecker, silver body and red bed, the other a dump truck with a key wind motor, green body with red dump bed.

Sunday January 18 I went to a train show in New Haven CT. and got a silver airplane with canopy for a 6" flat car. and three MARX, made in Japan, tin convertible cars measuring 3½ long.

I want to comment on Jim McGinnis's article in Issue #20. I diffinetly agree with him. I've passed up quite a few pieces due to high cost. If you have patience, the right low price will appear. They have for me. Am looking forward to Issue #21. -Ray Cox.

Ray -- It's always good to hear a report from an enthusiastic MARX collector. You aren't sitting back whining, waiting for the major find of the year to come to you. You have obviously been beating the bushes and exploring every opportunity to find what may be out there. You have been rewarded accordingly. Great finds! The yellow friction race car was sold for 15¢ at your local 5¢ and 10¢ store in the early to mid 1960's. Was not a part of a set to my knowledge. I have one in red, yellow, blue and have seen a green one. Keep up the good work and please write because it's guys like yourself that keep me motivated! Thanks again!



**The
Robert
Grossman
Company**

1967 CHELFORD RD. RICHMOND HTS. OHIO 44143
PHONE # (216) 738-0602 FAX # (216) 738-0603
NEW MARX TRAIN PARTS CATALOG \$ 4.00

In regards to the pricing guide question "How much are they really worth?" The guide hasn't been up dated in quite sometime - nor is it correct, or ever has been. Lets take a few examples-
1. Orange RI boxcar 147815 \$80.00. There are only 2 known to exist, if you were to compare it with a Flyer boxcar as rare as that the price would be \$2000.00 to \$3000.00 for the same car, or even a Lionel rare boxcar.
2. #4000 PC with painted grills, book says \$400.00 again take a Lionel Sears C&O Geep, its worth \$3000.00 to \$4000.00 - in like new condition. Lets compare - I bet I could find more Sears C&O's that painted Grill PC's.

We could go on about what is worth what, but MARX is becoming quite collectable, and it is my opinion they are the next hot collectible. The age group who will start collecting will remember MARX (made till 75) and still have some MARX available to purchase.

We can't go around with the attitude that it's "only MARX". To bring out some of the rare items there is going to have to be a change in the MARX community, one that will start to show that some MARX trains are just as rare or hard to find as Flyer or Lionel and that we are willing to spend a fair dollar to obtain these items. Then and only then will non-MARX collectors start to dig out those items. I have located some very rare items owned by a Lionel collector a few months back. He knows they are rare but as he has said, "lets get real". I'm not going to sell them for what's in the book. I may as well give them to some kid to play with. As he put it to me, "Show me a fair price in print, and I will sell them, but I'm not going to take your word as to a value! So here we are at the cross roads and don't know where to turn. Now if MARX could include a page sometime with item numbers and colors and we put a price on them and take an average, sent them off to the publisher of the price guide and get some of the stuff priced somewhere between "like to buy at and equal (almost) to a Lionel or Flyer item that would be as rare. I put this out for your comment and suggestions but it's time and I'll be the one to take the hear for this one! --Stan Troski.

A FEW QUERIES

1. Did the 6" 4 wheel illuminated red passenger cars (Bogota, Montclair, and Observation) come with die-cast wheels? The group that I had as a youngster had die-cast wheels, but my father might have replaced stamped-metal wheels if these were indeed the original ones. MARX did use die-cast wheels on un-illuminated cars: pages 236-237 of the Sears 1955 Christmas catalogue shows silver NYC cars with die-cast wheels (see the Toy Train Department and the Big Toy Box books); the same for 156 but with a Monon diesel in place of the steam engine (pages 272-273 of the catalogue); in 1957 (pages 258-259) there are the cars with a Kansas City Southern diesel (it's not clear from the Toy Train Department or the Big Toy Box if the cars are illuminated). The die-cast wheels are not as good at conducting electricity as stamped-steel wheels, so it's less likely that MARX used die-cast wheels on the illuminated cars. Reader comments appreciated.
2. Two questions concerning scale freight cars: did the NIACET #256 tank car come with plastic tilt couplers? Did the Erie flat with scale trucks (#035635) come with a lumber load originally? Reader confirmation appreciated.--Al Woodward.

Al--I'm not able to remember a passenger car with cast wheels. How about it readers. Anyone have cast wheels on a passenger car. I have an Erie flat with lumber load. I don't have an NIACET tank with plastic couplers.

Jim & Debby Flynn
PO Box 268
Wood Dale, IL 60191-0268
(630) 941-3827

4 January 1998



Collecting with Marx:

Just read your issue No. 20. I have a set which sounds quite similar to the one Robert Rogers was asking to "fill-in" in this issue. My set is in the 19" X 12" Marlines Freight Station box, and includes the following:

- 897 Electric loco
- Pennsylvania tender
- 59 UP slotted cattle car
- 552 CRI&P green gondola
- 553 SF tanker (black ends & dome)
- 554 NP red/yellow hopper
- 556 NYC caboose (National Defense scene inside)
- NYC crane
- 314 Red caution signal
- All black oxide track
- 719 Transformer - unusual model that comes without cord but has plug-in, to accept mom's waffle iron cord

There is no set number on the box, but pencil markings indicate that it was sold by a Montgomery Ward store in Urbana, Illinois for Christmas 1943. Black wheels, black track and lots of re-used litho evidence (including a tender frame made from a red Montclair car) conform war-era production.

The lack of transformer cord also indicates war-era shortages. Form IS-89 was included and states:



NOTICE

- 1- The transformer in this set is not supplied with an attachment cord.
- 2- Any standard flat iron cord, or similar connection, can be used.



Louis Marx & Company
200 Fifth Avenue
New York, NY U.S.A.

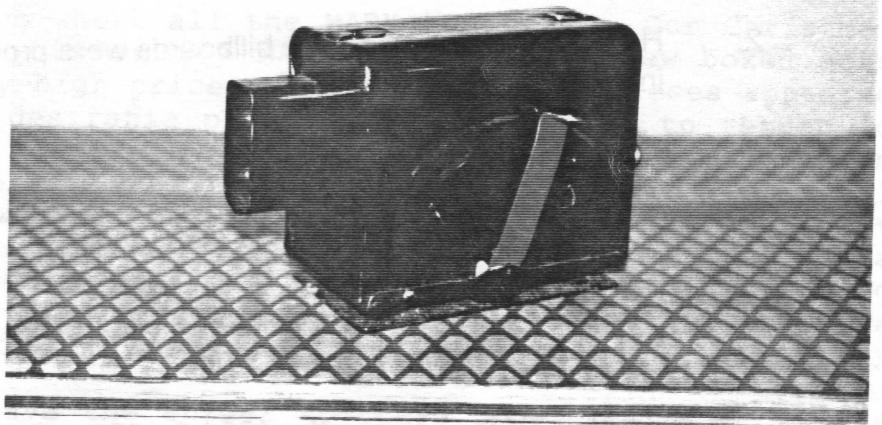
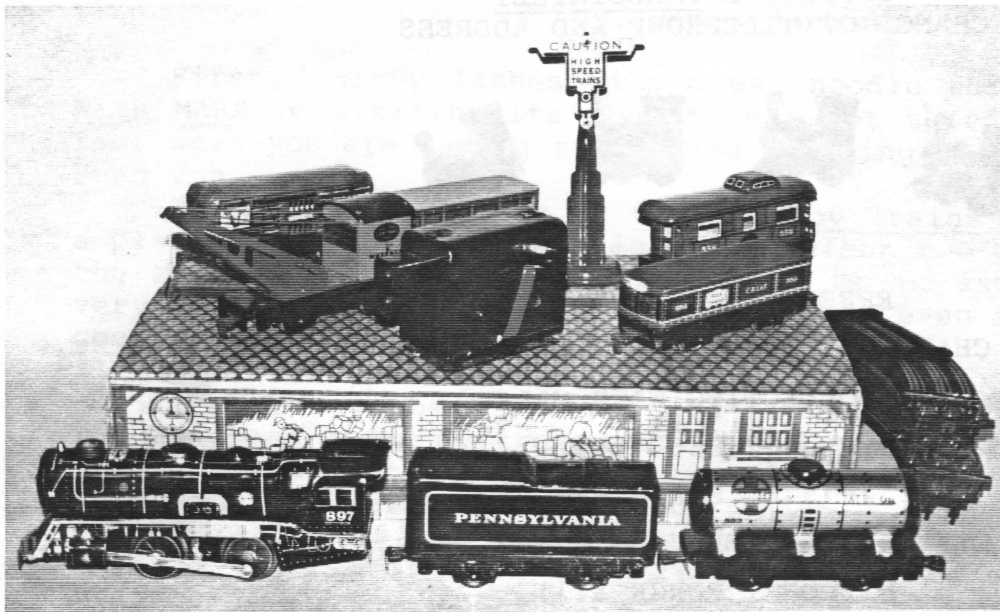
I presume the stars are to help keep patriotism in mind as mom is chasing junior around the kitchen table to whack him for taking her iron cord.

I hope this set is of interest to your readers. Photo enclosed.

I also have a set #5130 referenced by Richard Knauer which contains the "Railroad Oil barrels With rack" in the 552G gondola. The barrels and rack come individually boxed. Other components of this war-era set include a copper 396, wedge tender, hopper, dump car, boxcar, caboose, Deluxe Delivery ramp car set, tunnel, 2-tell-tales, hand trucks, switches etc. Set #5130 is in a large 18" X 18" X 6" box.

Sincerely,

James R. Flynn

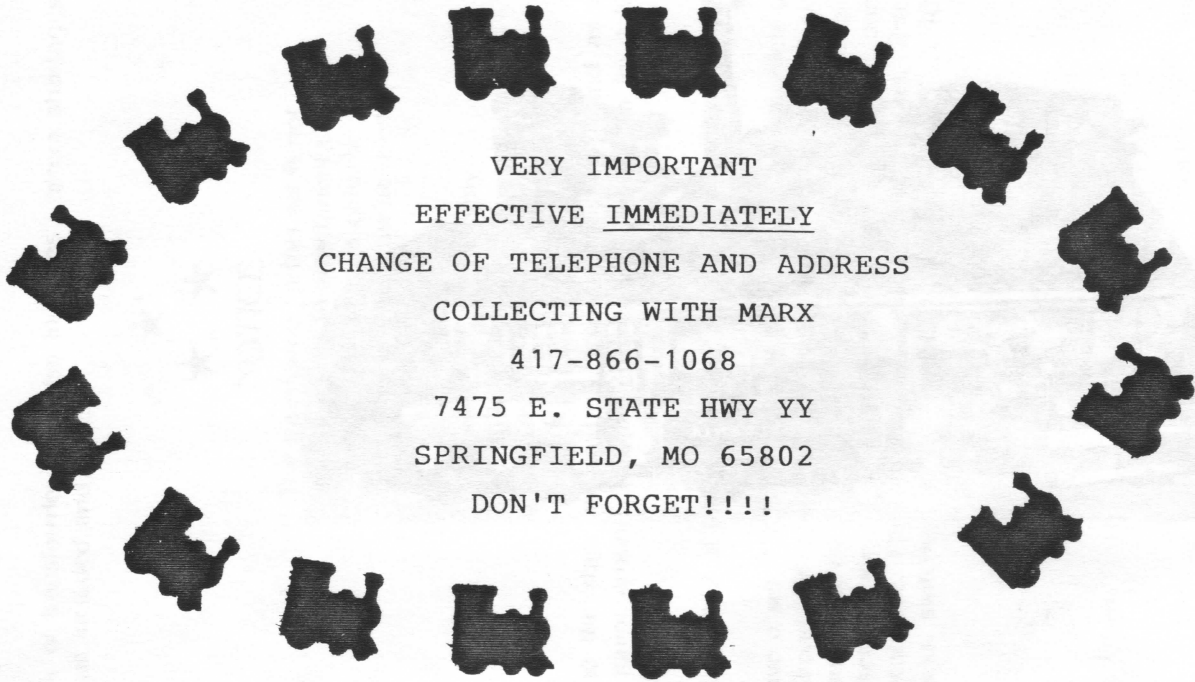


I have a set I never mentioned before as I was not sure of proper contents. The box is a MARLINES freight station single level. The transformer is a 719 35 watts with IS 80 indicating the transformer in this set is not supplied with an attachment cord* - any standard flat iron cord or similar connection can be used. The loco is a black CV shovel nose with hooded headlight and rivet tender with logo on end and tinplate wheels and sliding couplers but all other cars in set have black wheels and rivet couplers.

The set has black track and crossover with a short metal crossing sign with red jewel plus the following cars: 554 high side gondola, 554 hopper, 552 green gondola, NYC wrecker, 553 tank car with black ends and dome, 556 caboose with scene inside from another MARX toy as described in Classic Toy Trains magazine. I very much enjoy Collecting With MARX. --Norman Goff.

Norman --Before you received your December issue you wrote this letter. You are the second person to request this information and the answer is in this issue. What a coincidence!

VERY IMPORTANT
EFFECTIVE IMMEDIATELY
CHANGE OF TELEPHONE AND ADDRESS



VERY IMPORTANT
EFFECTIVE IMMEDIATELY
CHANGE OF TELEPHONE AND ADDRESS
COLLECTING WITH MARX
417-866-1068
7475 E. STATE HWY YY
SPRINGFIELD, MO 65802
DON'T FORGET!!!!

1. What color is the 1666 locomotive that pulls the Canadian Pacific plastic tender?
2. How many different plastic billboards were produced? I have 6 which include:
 - Ajax Cleanser
 - Halo Shampoo
 - Colgate Toothpaste
 - Palmolive Soap
 - Cities Service - Drive Safely
 - Sinclair - Power X Fuels

Crosley TV is shown in the 1954 & 1958 accessory catalog

Frame colors include:

light green
dark green
yellow
mustard - same as UP 1998 switcher

3. Does the 1799 4-wheel plastic ordinance gondola come in black? See Greenberg's Marx Volume 2 page 47.

Steve Eckel
5336 Shoreview Avenue South
Minneapolis, MN 55417-1949
612/722-9268

CARMARX

By: James Norton

First, thirty lashes with a wet noodle for CARMARX. Collecting With MARX is starting its fourth year not third. Time really passes fast when you are having fun -- and watching this publication grow has been fun.

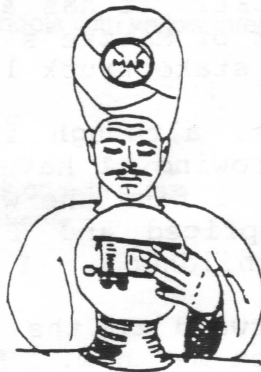
The March 1998 issue of Classic Toy Trains arrived and contained a pleasant surprise. There is an excellent two page product review of the MARX CTA Elevated train set. It is an excellent review and is very complementary, as it should be. MARX even rated a by line on the cover, but did not appear on the contents page. It appears on pp 110-111.

I must have been a very good boy last year as Santa left one of the CTA sets under my tree. Again the appearance and quality are out standing and continue the program of excellence in production we have come to expect from Flynn's MARX TRAINS. As noted in the CTT Review the operation of the sound system requires the operators attention. This is a case of "you must read the instructions". The sequence described in the instruction sheet is accurate and to the point, however, you must be patient with the sequence of start, stop, full neutral (with a short wait for the bell and announcement), reverse, neutral (again with a wait for the clang) and then forward. The sound effects are out standing and the station announcements clear as a bell.

The trestles in the set are of heavy gauge metal and are duplicates of the original metal trestles from prewar days. I'm in the process now of planning how and where to modify my layout so that the "L" can really run elevated.

CARMARX is wondering where all the MARX has gone. Our Christmas show in KC was almost void of any MARX for sale. A few boxed sets were available at really high prices. Very few common pieces appeared and no really rare or desirable pieces. Is MARX going to return to being the step child of the train collecting hobby? Also missing from most train shows is the new MARX trains. I have one extra Penn set I have taken to train shows for the past year. The only interest in it has been "Oh, is that the new MARX?". I still think that in a comparison with other modern day toy trains MARX is an outstanding value. Perhaps the problem is that it is tin plate and not the more realistic looking plastic cars and engines that resemble the scale models of HO or N.

CARMARX does not have the answer to these problems but we in the MARX community must be aware of them and seek solutions. As you visit hobby shops, toy stores, train shows, etc promote the MARX hobby and high light the desirable points about collecting and operating MARX. Each of you must have some reason for being involved.




Thought I'd send along some information along with my renewal. I recently picked up an interesting set at a toy show. It has a clockwork #591 engine with 6" cars, a yellow B&O gondola #241708, and a #20102 NYC caboose. But what stopped me in my tracks was the blue, banded tender with a black base. This boxed set is in like new condition. All the wheels and couplers match, and there hasn't been any tampering with the tabs. Only a portion of the set number is on the box. It appears to be either #518 or #519. Several of us have looked at it and feel that it is a legitimate set. We are guessing that someone grabbed the wrong tender body, or they ran out of black ones. I was told that one of your readers had described a similar set a while back, but I can't find it in any of my back issues. I had to give \$150.00 for it, but if it turns out to be legitimate, I won't feel so bad.

In response to Robert Rogers' question regarding the 'Freight Terminal' set in the December issue. I have a similar set in the same box; black CV with copper plates, CP type Pennsylvania tender, #554 red/yellow hopper and Hi-side gondola, #552 CRI&P gondola, #553 ATSF tank with black ends and dome, NYC wrecker, red boom and base, and #556 caboose. All the cars have riveted T/S couplers and BLACK wheels. The track is also black, 12s, 4c, and a crossover. Also includes IS-9 and a #719 transformer without a cord. A well-known collector friend has an identical set, so the unusual combination of CV with the PRR tender appears to be legitimate. This set is not in the set book and I can't find any set number on the box.

Just a reminder. Stay good friends with those less enlightened collectors. I have a boyhood friend that is a died in the wool Lionel collector. He buys and sells a lot of trains and has found me some pretty good pieces including a 6" 8 wheel PRR hopper with black interior and complete unboxed 8 wheel red frame set #15100, which includes the hard to find pole car with poles and most recently a boxed 3/16 set #25020 which includes the all black #391 and the rare log car with a couple original logs. As they say, one man's garbage is another man's treasure. --Ken Albers.

Ken --The first set you mention is a good set. Probably as you say there was a short run where they had no other tenders. I have heard of 2 other sets with the blue tender. With MARX you never know.

Your freight terminal solution is a good one. Jim Flynn sends his solution which matches mine. This set to my knowledge has no set number, however there are different sized freight station boxes. I believe there are at least three set combinations for this station.

Keep up the wonderful work with the magazine. I especially enjoy the articles about finds and explanations about various pieces. In relation to that I have two questions because I most enjoy collecting and operating tin litho MARX. I have an OD military flat car (6") without a load. It has a center clip shaped like this . What is the correct load for this car? It has a tab and slot coupler riveted to the body. Also page 72 of Matzke's Volume 1 shows a military 6 in flat car with a red patrol stake truck load. Is that an original set load or an add on?

With regard to finds, although it is getting harder, probably because my collection is growing, I have found an M10003 in excellent condition and all in tact. I find the windup mechanism very interesting. It was reasonably priced and I bought it from a gentleman selling the toys of his childhood. I have also found several loads for six inch cars.

I will be looking forward to the first annual MARX convention. If I can help in any way let me know.

Thanks again for the magazine. Norm Brickl.

Norm--It sounds like you have an airplane flat. It would have an open spot at the end in the center for the tail of an airplane and the two clips toward the other end hold the axle of the airplane.

While it is possible that the patrol truck was issued in a set it is sure that this same truck was a part of the early fire station set. Same size but probably not an original load.

I was given your name by an employee of the "Robert Grossman" company, of Richmond Heights, Ohio. They told me that you publish a magazine or newsletter, devoted to the collection of "MARX" brand toy trains.

I am a new, but very enthusiastic collector of MARX trains. I had an "Allstate" set as a child, as well as a battery operated "old-timer" engine. I still have the old-timer, and purchased four different sets during 1997. Being a MARX collector is a lonely pastime, given the almost nonexistent coverage that MARX products receive in CTT magazine.

I'd like to see what other collectors are up to. Please enter my subscription, using the address on the letterhead as the mailing address. --Robert John Casares.

You are putting together a neat and interesting publication. Keep up the good work. I found it interesting that John Fox and Tasker Brush are considering putting together a MARX Convention. I really think this would be GREAT. One thing I want to touch on, if this is to become a reality they will need help. If the location selected is near where a member collector lives, if possible offer to help them. It is a big undertaking and I'm sure extra hands will be helpful. I'm sure extra hands will be helpful. I really hope they follow through on this. I know John does the MARX meeting at York and does a good job, so I feel he would also do good at putting together a convention. --Jim McGinnis.

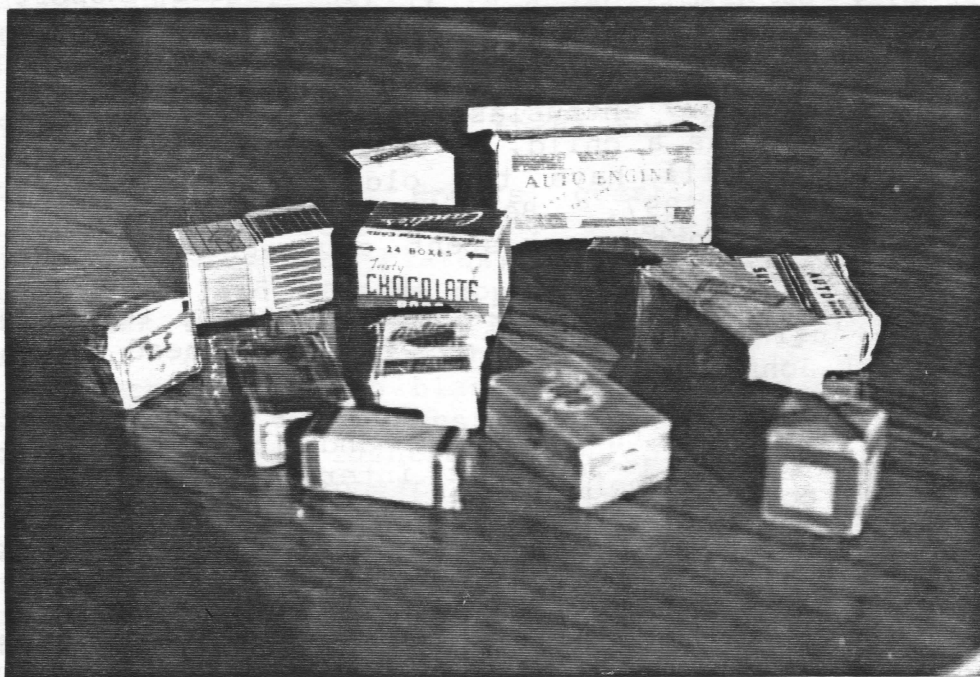
Response to Robert Rogers "Freight Terminal"
December '97 Issue

I have the same set box as shown in photo. There is also a separate cardboard loading dock that tabs into the side. Rolling stock consists of:

494/495 CP 040 Loco
Silver/red/black sideboards with crest
Nicked pilot, boiler front, stack, dome and ear flap marker lights
Black boiler & cab prewar motor
Pennsylvania (CP style) tender -- ~~black with red lettering on silver background~~
552 CRIP gondola
553 SF tank car - black dome and ends with wire handrails
554 NP red hopper with yellow interior
554 NP red highside gondola with yellow interior
556 1st series caboose
12 black curved track
4 black straight track
1 black x-over section
709 transformer and lock on with wires
All cars have black tin wheels

Steve Eckel
5336 Shoreview Avenue South
Minneapolis, MN 55417-1949
612/722-9268

A couple years ago at Wheaton I picked up this collection of small boxes shown in the enclosed pictures. I had suspicion they were MARX but to date, haven't been able to confirm that. Thought maybe some of the Collecting With MARX readers may have a for sure identification. Happy Hunting. John Torgerson.



Received the December issue of CWM and enjoyed it as usual. Some thoughts on Troy Debord's Gray Mercury with lighted cab. Anything is possible with MARX, but probably doubtful that a lighted cab feature was offered as such. To make room for the sparkling mechanism, the reverse unit had to be moved to the back on this motor, actually turning the motor 180. Looking at the pictures. It appears that the 1 piece pickup is not original. This particular prewar engine SHOULD (normally) use the 3 piece which also requires a different fiber mounting plate. Troy describes the motor as having light sockets at each end. The pictures show a light socket on the reverse unit facing the cab and the other light socket screwed to the boiler front, not on the motor itself. To be certain that this is factory original, solder connections should be examined to see if the reverse unit with light socket alone, or with the 1 piece pickup have been replaced. It would also help to see how the front light wire connects to the motor; soldered or clipped. This lighted cab feature could be duplicated by replacing the reverse unit with another that has a light socket. It's also possible MARX ran short of plain reverse units and substituted one with a light socket in this engine, but did not intend to use a bulb. As an after thought, this would have been a nice feature with a red bulb, giving the cab a firebox glow.

Another note on the Model Power Santa train set. I did trade a Finerhut set for a new Model Power Santa train. Al Osterud's Model Power set had the 'Holiday Express' hopper in the same color as the BN hopper from the MP Santa Fe set dark purple. My Fingerhut set and new M.P. set have this hopper in green. Guessing the early M.P. "Santa Train" have the purple car. Another variation to look for. Model Power did sell this set at Christmas time. --Gary Anderson.

FOR SALE

Plastimarx NYC tin 7" tender. Gary Anderson, 218-478-2711.

Replacement shields and belts for the six inche 572 MG and 2572 MG machine gun car. Ronald White, 6114 N. 129th Ave., Lithfield Hts., Arizona, 85340. Phone 602-935-5256.

#####

WANTED

No. 734 Mickey Mouse loco C-6 to C-8. No. 941 tender - have cars but nothing to attach to. Ronald White, 6114 N. 129th Ave., Litchfield Hts., Arizona, 85340. Phone 602-935-5256.

MARX military particulary complete sets. Please call with individual pieces as well. Ira Goodman, 811 W Jericho Tpke, Smithtown NY 11787-3220. 516-265-3837 leave message.

MARX Santa Fe Passenger cars also Joyline 3 1/2" square tender. Leo Deuster, 616-733-9720 after 6 pm est.

1. KC Southern cabooses tin.
2. Need B&O cabooses #504, 506, 517.
3. Fruit Growers Express 6" reefers.
4. Pacemaker Freight 6" boxcars.
5. State of Maine Boxcar #4493.
6. English Green Link set.
7. English Joyline cast iron engine any color.
8. 6" flat for #5 army tank.
9. All red 6" log car.
10. Red 994 style engine and tender.

Change of address and phone: Collecting With MARX, 7475 E. State Hwy YY, Springfield, MO., 65802. 417-866-1068.

Wanted:

Union Pacific Plastic 4 Wheel Tender

Santa Fe #3280 - 4 Wheel Plastic - Yellow Box Car

"Ethyl" Gas Pump and "FreeAir" Pump for Road Side Rest Service Station (see attached photo copy)

Marx "Crosley TV" Billboard (plastic) or insert only

NYC Flat Car Maroon 4 Wheel Plastic

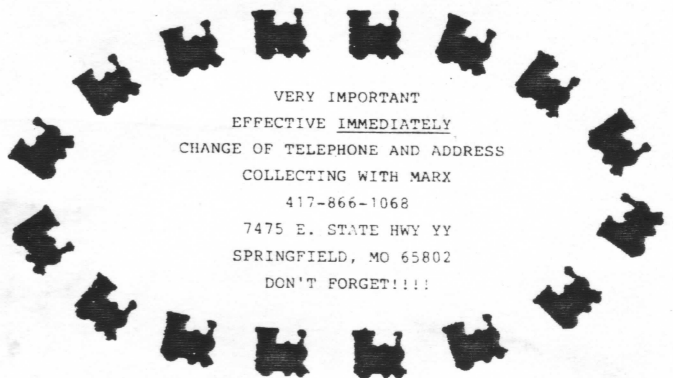
Marx Plastic Buildings:

- 3721 Police Station
- 3741 Army Barracks
- 3781 Firehouse
- 3792 Ranch Set
- 3802 Colonial House
- 3832 Airport
- 3841 Market
- 3856 Chicken Coop

Steve Eckel
5336 Shoreview Avenue South
Minneapolis, MN 55417-1949
612/722-9268

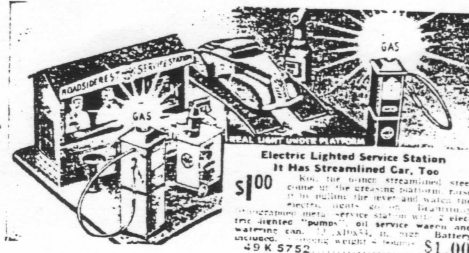
VERY IMPORTANT
EFFECTIVE IMMEDIATELY
CHANGE OF TELEPHONE AND ADDRESS

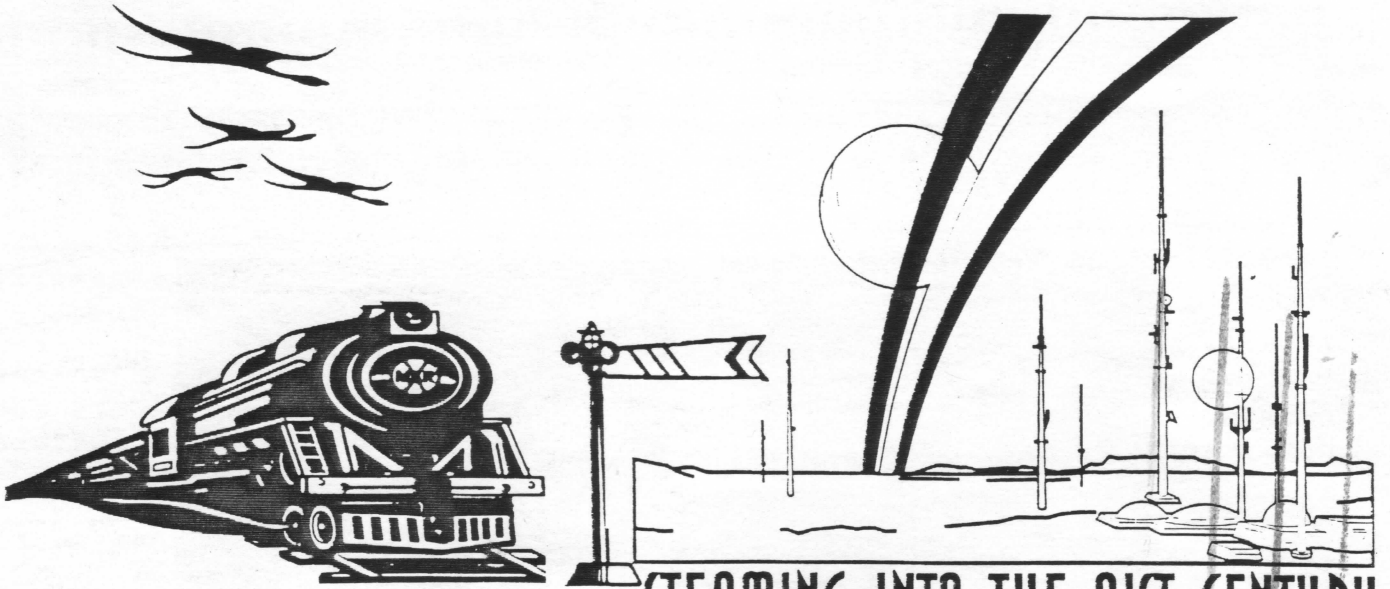
VERY IMPORTANT
EFFECTIVE IMMEDIATELY
CHANGE OF TELEPHONE AND ADDRESS
COLLECTING WITH MARX
417-866-1068
7475 E. STATE HWY YY
SPRINGFIELD, MO 65802
DON'T FORGET!!!!



Need Air Pump

Need "Ethyl" Pump





MARX TRAINS™

STEAMING INTO THE 21ST CENTURY ©

209 E. BUTTERFIELD ROAD • #228 • ELMHURST, IL 60126
TEL: (630) 941-3843 FAX: (630) 941-3829 • e-mail marxusa@aol.com
<http://www.choicemail.com/marxtrains/> and <http://www.trainexchange.com/marx.htm>
Adult collectibles - Not intended for children

COLLECTING WITH MARX
7475 E. State Hwy YY
SPRINGFIELD, MO. 65802

