

COLLECTING WITH

MAIAX

Issue 31

October



COLLECTING WITH MARX

SUBSCRIPTION RATES: \$18.00 per year
All subscriptions will be mailed on the same day with the same amount of postage to avoid unfairness in delivery. Mail dates will be the fifth day of every other month.

WITH EVERY SUBSCRIPTION comes a free ad of no more than 35 words with each additional word costing 10 cents.

CLASSIFIED ADS are 10 cents per word with a \$3.00 minimum and no maximum. Columns available are: Buy, Sell and Trade.

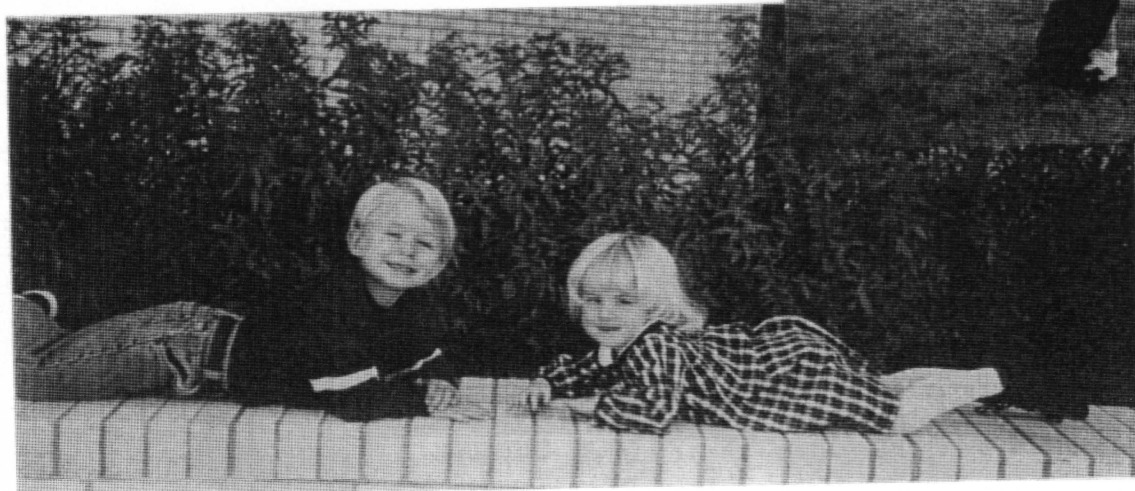
DISPLAY ADS: Quarter page-----\$10.00
Half page-----\$18.00
Full page-----\$30.00
(Slightly higher if not camera ready)

WE RESERVE THE RIGHT at COLLECTING WITH MARX to print or not print anything that comes into our office.

INCLUDE YOUR NAME, address and phone number with every ad or article. Nothing will be printed about you that you do not designate. If you do or don't want your name on an article or other submission just say so.

COLLECTING WITH MARX is not responsible for any errors, accuracy or problems you may have with advertisers in this newsletter. All photos, cartoons and articles will not be returned.

Collecting With MARX
7475 E. State Hwy YY
Springfield, Mo. 65802
417-866-1068
6-10 P.M. CST or leave message
FAX # 417-866-1068
Copyright 1999



Louis and Lauren all dressed up for pictures. Louis is 4½ years old and Lauren just turned 3.

When you read this note from me, some of you will be back from York having bought every scarce and rare piece of MARX trains ever known to the collecting community. Some of you may even have found a factory one-of-a-kind piece that could be the envy of all who collect. And still others may have just enjoyed the trip and were glad to see fellow collectors and just visit and have a good time with others of similar interest. Even still others of us waited at home for the next buy to come up on the internet or our next local show to get here so that we could look at trains.

The last show I attended was about seven miles from my house. I was on my way to a special show I was doing for my business and passed by a building I pass by on a regular basis. It was the "Teamsters" union hall and I saw a sign that said "train show". Of course I whipped into the lot and pulled around to the back door where the dealers were still unloading. The aisles were about two feet wide and there were so many people in there you couldn't even get in. I made my way to the first aisle and eventually around the small room. Several dealers had MARX trains and there were several good buys. It still is very difficult to find things to add to my collection. I occasionally find a sale or auction where I add something. Included on the cover of this issue are some things I purchased in the last few months. Things I am very privileged to own.

For the next issue please think about a story that you may remember from your childhood about a train set or train related story that we all may enjoy from the holiday season. I'm sure we all have some memory that we could share about the subject we all hold dear. Feel free to send pictures and don't forget this is your paper so if you like it participate.

Let us know what you're finding and send a note occasionally telling about what's happening in the way of MARX collecting.

I would also like to see more pictures of your layouts. If you are willing to show off your working layout please feel free to send description and pictures to us.

Please send all correspondence to the address inside the front cover of this magazine. All other addresses and numbers found elsewhere in the magazine are for advertisers and are not directly affiliated with "Collecting With Marx". Please don't hesitate to send things like cartoons, stories, pictures, etc. It's always good to hear from you and I encourage you to be involved. If anybody would like to have a regular column, that would be great.

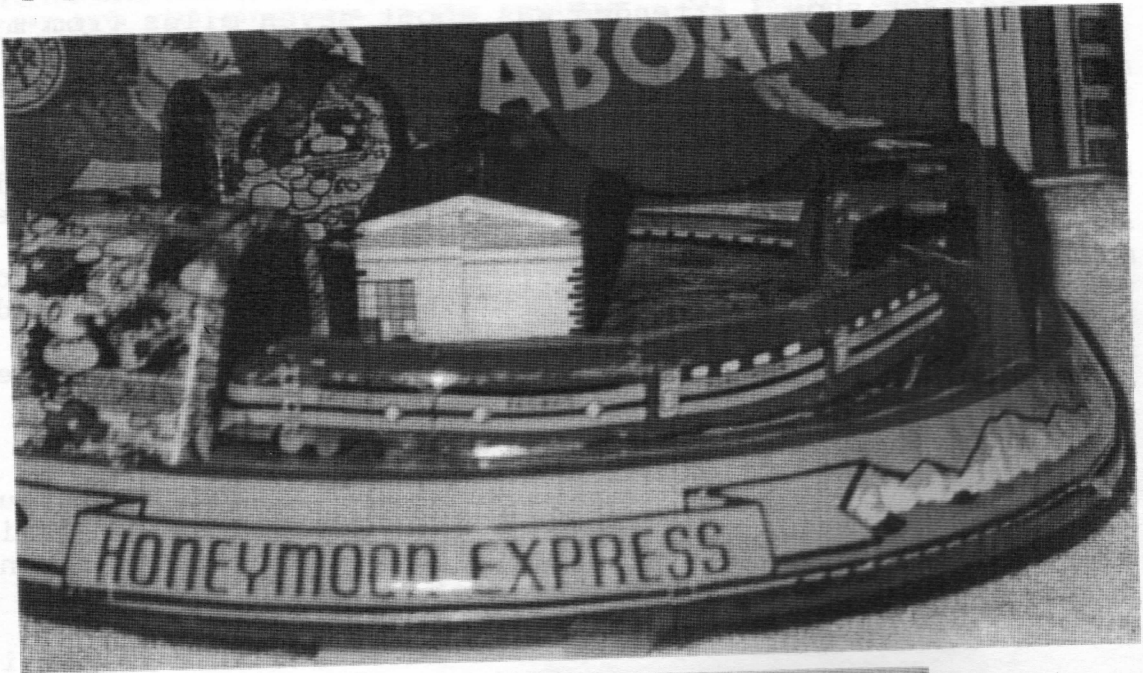
Happy Collecting!

Marx

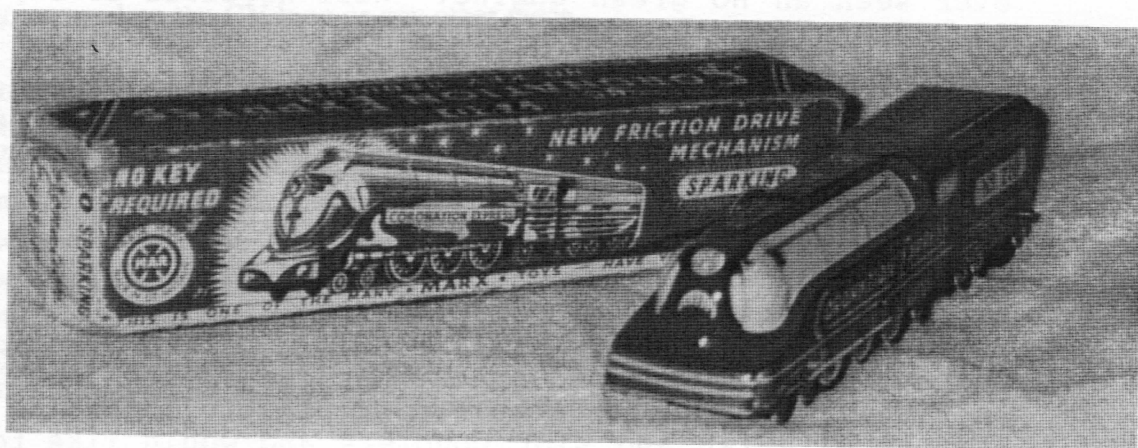
AN ENGLISH GROUP WORTHY OF ROYALTY

The auction brochure said, "Mechanical Streamlines Train, Coronation Express, Marx HO set, Battery operated train in bad box and Honeymoon Express missing airplane. Eastimated value about \$250.00.

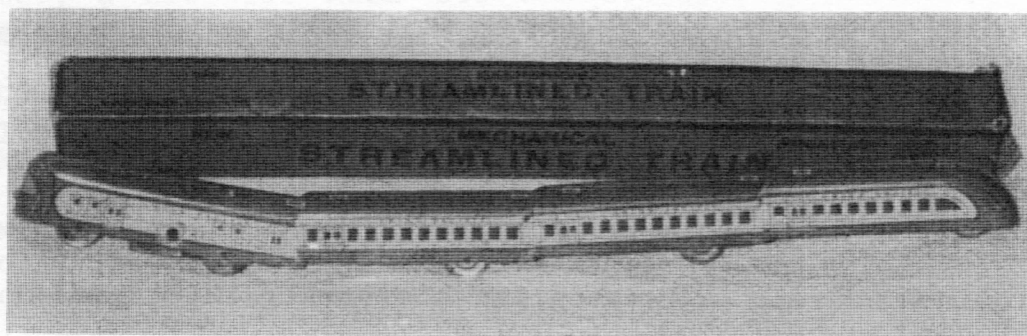
I have ten or twelve Honeymoon express trains made in USA and one Plastimarx made in Mexico so I thought it would be fun to have one made in England. I thought I could do without an airplane with no problem. I got the box home and started looking through the stuff. I found the box that said Honeymoon express with airplane and thought, "I'll never find a plane for this but that's ok." Well I kept looking through the stuff and found another box that's shown in the picture that says nothing about an airplane.

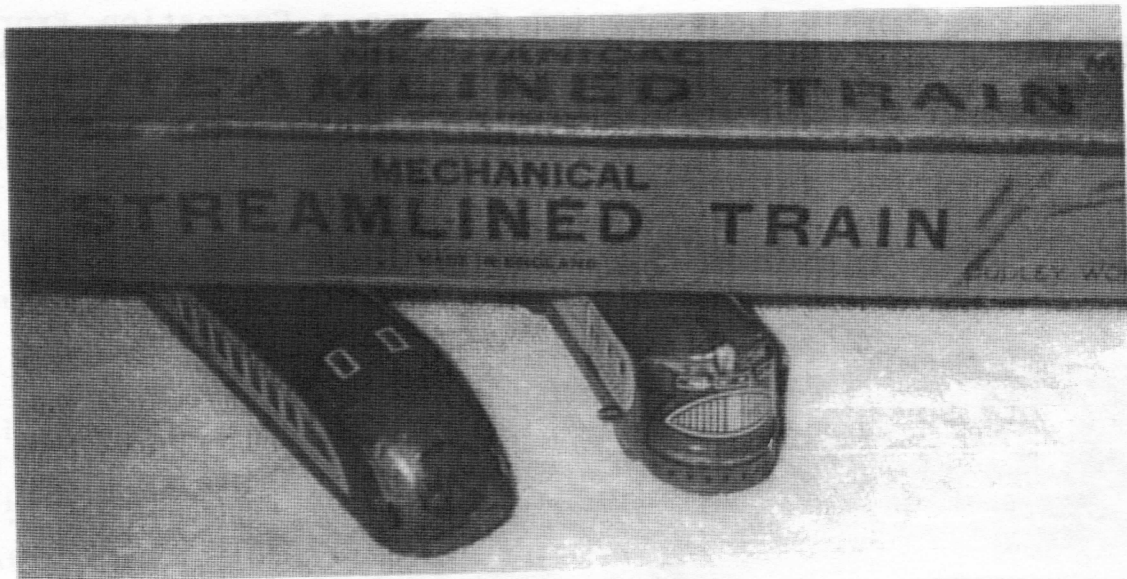


Part of what I was hoping for was a Coronation Express in miniature. I have seen a miniture version of the three rail Coronation train and that's what I had hoped it was but as the picture shows it was a boxed friction Coronation train in excellent condition. A small let down but nevertheless a great piece.



The prize of the bunch was the four piece brown and cream mechanical streamlined train in its original box. I had never seen this box before and it makes this piece a very desirable one. The box reads "Made in England" "Dudley Worcester". This was the prize of the group and one of my favorite toys in my collection. It's somewhat difficult to find one of these made in USA in the box.





Also included was a rough floor train made in Hong Kong which I already owned in much better condition.

I thought that was everything but I remembered there was supposed to be an HO set included in the lot. I dug a little deeper to find a boxed HO set which said "MARX made in the British Crown Colony of Hong Kong". I thought what a piece of junk and I saw a green engine and remembered Stan Troski asking me if I had ever seen an HO green engine. Well needless to say this was that very scarce HO set. I sold it on the internet for more than I paid for the whole lot.

By the way the piece that was on the last copy cover was also included in the lot. I was very excited to receive this lot. You've got to keep your feelers out there or you may never land the big tuna.

I recently acquired an Allstate 9740 mechanical set box. I have the locomotive and track, but can anyone tell me whether this set used tab and slot couplers or plastic knuckles? I have a 1951 tender with tab and slot couplers and would like to use with this set. Thanks. --Robert John Casares.

I think the MARX trains dried up and blew away around here. I went to Mason City to a train show 2-3 weeks ago and found a really nice CP #396 040 engine. It had copper boiler and copper side panels also. I didn't get the tender. This is the first one I had ever seen. - Dave Gord.

I have been going to a number of local show and pick up a few nice things but nothing really special. The best deal I got was from a Toy Dealer who had four Marx pre-war switched (Two electric and two manual) in excellent condition for \$15.00.

Just in case you haven't heard, the 2nd Annual MARX convention will be held on June 16 and 17 at the Kruger Street Toy and Train Museum in Wheeling, West Virginia. There is also a MARX Train discussion group on the Internet. For sign up info use the following address www.onelist.com/subscribe.cgi/marxtrain -
-Al Schindler.

MARX MILITARY VARIATIONS

Karl L. Wandry

Just recently I received a 6" 552M military gondola and found that it had a black frame. Not paying much attention to it, I put it aside to compare to the ones I had relative to condition, etc.. I assumed that someone had simply replaced the original OD frame with a black one from a "civilian" car. Awhile later, I was looking for a wedge tank for a friend of mine and ran across one with a car with a black frame. When I first saw this car, many moons ago, I thought it had been placed too near a fire. Upon closer examination it is clear that the car, while partially blackened by soot from a fire at one end, has an original black frame. This discovery has caused me to wonder about the gondola with the black frame, although I suspect my original assumption about the frame swap is most likely accurate. Not so with the tank flat. Has anyone else run across military cars with original black frames?

Another set of interesting variations I recently came upon is the 6" military cars with a green frame rather than OD in all its variations. The cars in this group came from England, along with an English #5 tank, so this variation might be tied to English production of the cars. A friend has an 8-wheel searchlight car that is completely green. The green is best described as a forest green, darker than the green used on the CV loco or any other piece.

There has been some discussion as to whether the wedge tank flat was used as an airplane flat as well. Walt Hiteshew makes a pretty good case for it on his web-site. He shows pictures of the airplane on the tank flat where the tailpiece of the airplane fits into the raised piece at the end of the flat away from the mounting bracket. I tried to fit an airplane on the several tank flats I have that have the raised piece and they all fit. I do have the tank flats without the raised piece as well. There seems to be little or no use for the raised piece as it applies to the tank load. While I am not yet totally convinced of this dual purpose use of the tank flat I believe the argument has some merit, particularly in light of the Marx approach to the production of toy trains. Anyone have any further information or ideas about this?

Collecting continues to be a rewarding experience and I have found several items over the past year that has expanded my collection. I look everywhere, every chance I get. Places have included flea markets, rummage sales, auctions, antique malls, fellow collectors and just plain folks.

Some of the items I have found include: a Penn central 4000 diesel A unit, a 556 4 wheel lighted caboos, a man in the door red roof silver frame car, a 5563 Kansas City Southern six inch caboos, a Roadside Rest Service Station, a military tank, and several metal toy truck loads including a delivery truck load.

The fun is in the hunt and the people you meet. I thank all of the Marx people who have helped me along the way. They are a true asset to the hobby. I will try to do the same. --Norm Brickl.

I have been examining those flats upon which the "little Marx tractors" ride. There are seven different variations of the tractor flats, which I have, and which are shown in Greenberg's Guide to Marx Trains, Vol. II. Page 65 of Vol. II shows 6 of the variations in the flats. The 7th variation is shown on page 44, the 4 wheel flat with two red tractors.

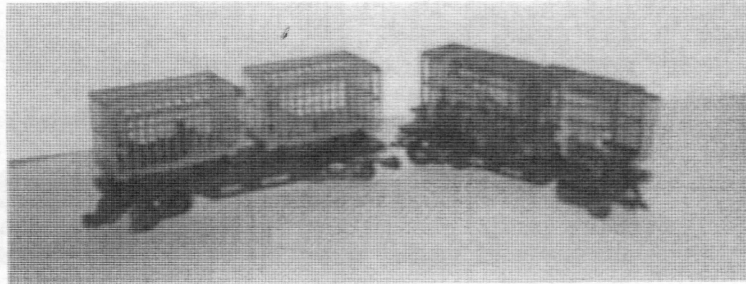
It is interesting to note that according to Greenberg's Guide to Marx Trains, (the first book), that the deluxe tractor flats began to be produced in 1956. The light weight or 4 wheel flats with tractors began production in 1960, the book records. I must go to Vol. II (yellow book) to note that the tractor flats with type G trucks (Erie with white letters) was produced late, listed as 1974. The tractor flats with maroon body, yellow lettering are listed as being produced beginning in 1956 for both type F or G trucks. And that very collectable orange Erie flat type F trucks with green tractors was produced in 1956 as well. Bob Whitacre, Vol. III, Sets, notes that 9638 Diesel Freight Set is listed in the Sears catalog of 1958.

Recently I received a listing of Marx trains of an Erie flat which formerly had the tractor clips, now carrying log load. I found that the short tractor flat, type G trucks, 8 wheel, and the 4 wheel flat has holes punched at the factory for both the tractor holding clips and the clips that hold the semi-trailers as well. However, I have flats noted above that only have holes and clips for the semi-trailer. Yet, the stack flat can be found with holes for these two, plus two additional holes in the 4 wheel version for the generator. Somewhere along the production line there someone ordered some extra holes. Or does this lead to production happening over different years?

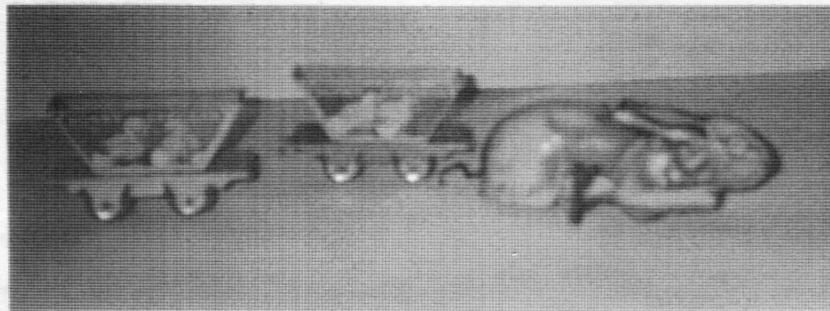
Another question I raise: I have 4 wheel flats, Erie in white letters, and all the holes, slot, punched. Yet, I have not found a 4 wheel tractor flat with white letters. Has anyone come across the tractor flat, 4 wheel, with white letters, or with the hook and eye couplers? Again, I ask, has the 8 wheel tractor flat with knuckle couplers surfaced?

I am sending a couple of pictures of items:

First picture: 2 Sou 51100 flats (1 flat has white letters; the other has yellow letters). Both flats have knuckle couplers. Both flats have cages, four cages in all. Two cages are grey or silver in color; 1 has a bear, the other a gorilla. The other cages are red; 1 with a lion, the other a tiger. All of the cages open at one end and have MARX stamped on the bottom.

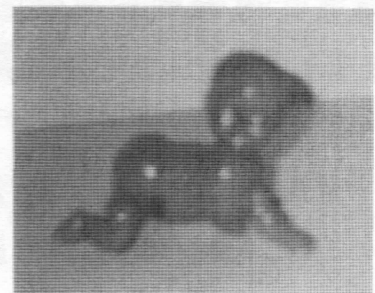


The second picture: A blind rabbit! with two of the Bunny Express gondolas (lavendar and blue frames). Now, since my rabbit is blind, and in very decent shape, does anyone have eyes so we can make this rabbit sighted? I understand the eyes can be either blue or red. I'd be delighted to be able to purchase a "bad" rabbit with eyes. call me: Duane Ford
517-323-6409



The third picture: A crawling baby. It is a black child with a wind-up plastic key underneath. As it is wound, the front and rear legs move causing it to crawl. I have heard that there is a white baby or child variation like this. The one I have is stamped, MARX, Made in U.S.A. underneath. The toy is of hard plastic with a metal windup motor visible through the rear (and it works!).

Duane Ford

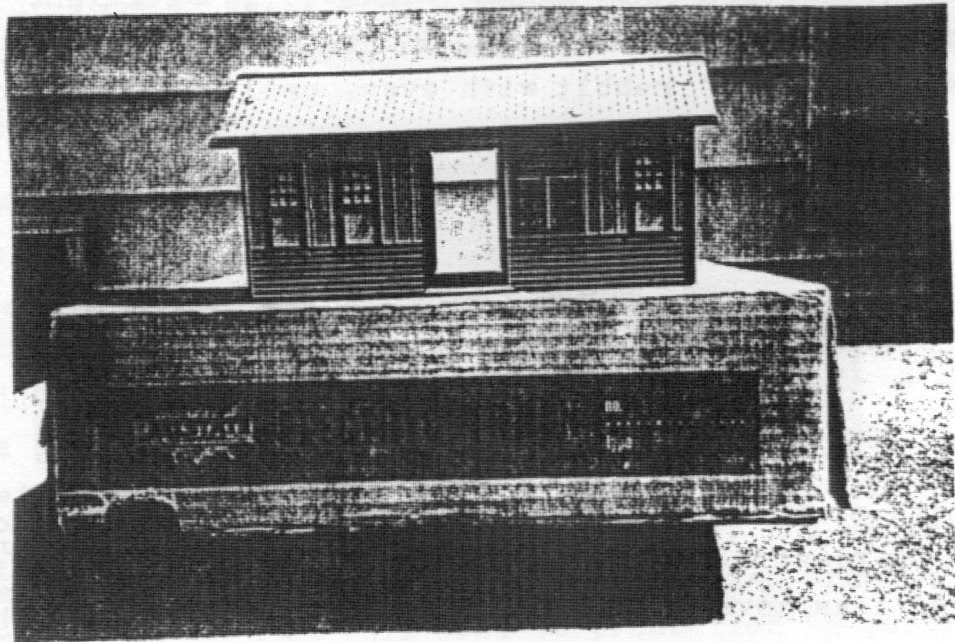


ADVENTURE AT GIRARD STATION

On a steamy summers eve, at 221B Main St. Dr Marxson an his mentor, were sitting around their flat. When the Dr. hit on an idea! Saying this simply will not do - we should be doing something! Why don't we walk down to Girard Station and catch the local into kings cross for an evening of theater and dinner. His mentor "Being Bored" wanted nothing to do with the adventure, but finally gave in. While on their way, his mentor, queried, have you ever noticed all the stations are the same on the line? Not so said Dr. Marxson, I can think of at least (5) that look similar, but are different right off the top of my head and went on to explain the differences that he had noticed, to help pass the time on their journey.

We will attempt to cover the different types of "Girard Station":

1. Girard Station - Red and gray with gray shingle roof and whistle.
2. Girard Station - Red and gray with gray shingle roof and whistle and light.
3. Girard Station - Red and gray with whistle and plain gray roof.
4. Girard Station - Red and gray with gray shingle roof and whistle - all red base.



5. Girard Station - Tan vertical clapboard siding with brown horizontal, siding - litho windows - onside door - one side baggage door - Girard litho on sides of building - litho train schedule on front and cutout center door - plain white inside - open back with wire seperator. Dimensions - $3\frac{1}{2}$ " wide - $7\frac{3}{4}$ " long. PS. - roof may or may not be correct one??

Wanted - needed help - on finding where this station came from??

(IE) was it for separate sale? - did it come with a train set - if so - which one and with contents of set and number any catalog or paperwork showing same?

The answer to this adventure was uncovered by the "Drs" unending search of books and papers on trains and playsets made by MARX. Along with endless phone calls, leading to two people with an answer. Ther are Mr. John Torgerson who directed me to an owner of a boxed set complete with all pieces, a fine gentleman, Mr. Robert Thomas.

Harry Coons (AKA) Dr. Marxson with help from Lori Coons the Drs. wife and main st. irr's. who's help, this tale has a logical conclusion!

"Singularity is almost invariably a clue" --Sherlock Holmes.

This article courtsey of the Editor of Plastic Figure, Playset Collector - Tom Terry.

THIS MONTH:

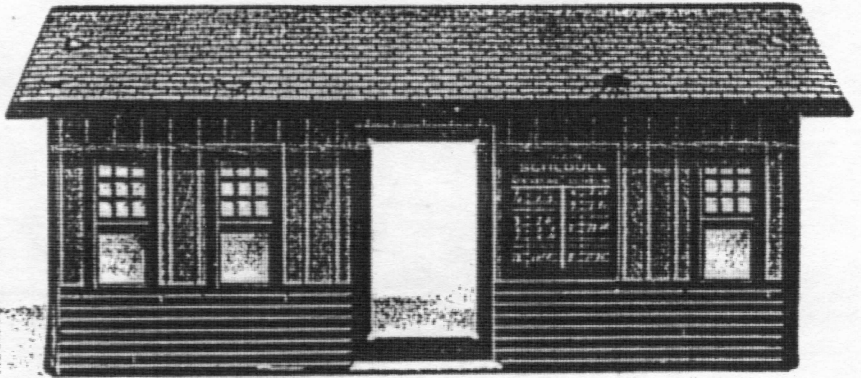
We took a brief respite from our puzzler feature over the holidays, but now we're back. Here's a never-before-seen tin lithograph building that was acquired at a train show several years ago. The piece is definately of Marx origin, even though there are no manufacturer markings or logo on the building. It is of the same stamping as the Marx down-sized western ranch cabin, measuring 3 1/2"

wide, 7 3/4" long and 4" high, excluding the roof. The sides are colored with cream vertical boards, reddish-brown horizontal boards and trim, with a grey shingled roof trimmed in black. The end not pictured shows a painted window and doorway; the interior walls are not lithographed, nor are there any holes in the roof for a seperate chimney piece. The building is definately a production piece, not a prototype, and is presumed to have come in some version of a Marx

train set.

We're hoping readers can fill the information void, perhaps one of our train enthusiasts has the answer?

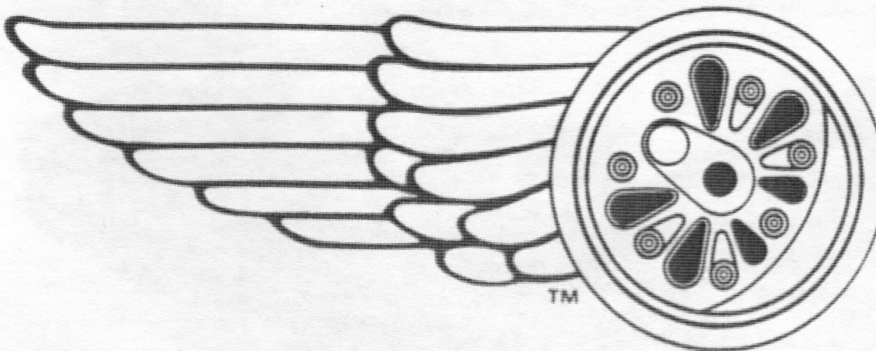
-PFPC



**MARX No. 9616
ALLSTATE TRAIN SET**

- 1 #588 black NY Central switcher
 - 1 #467110 red B & O box car
 - 1 #347100 grey Pa. gondola
 - 1 no # tuscan-brown NY Central caboose
 - 1 30-watt transformer
 - 8 curved track sections
 - 4 straight track sections
- ACCESSORIES:**
- 2 Dummy gooseneck lamp post,

- green HP w/yellow HP bulbs
- 4 Telephone poles, brown HP
- 1 Dummy crossing gate w/movable arm, red HP
- 1 Dummy semaphore w/movable blade, red HP
- 5 Signs, white HP [2-yard limit; 1 reduce speed; 1 cattle crossing; 1 steep grade]
- 1 Tin lithograph Girard station



**The
Robert
Grossman
Company**

1967 CHIELFORD RD. RICHMOND HTS. OHIO 44143
PHONE # (216) 738-0602 FAX # (216) 738-0603
NEW MARX TRAIN PARTS CATALOG \$ 4.00

Two Army cannon cars were made by Marx: the six - inch, four - wheel 572G and the six - inch, eight - wheel 2572G. Simple in design, these two cars did not offer any details of construction of an actual cannon car.

The enclosed photographs show an example of a railway cannon car from World War II, built by the Germans, and used during the war. This cannon car is now on exhibit at the U. S. Army Ordnance Museum, Aberdeen, MD.

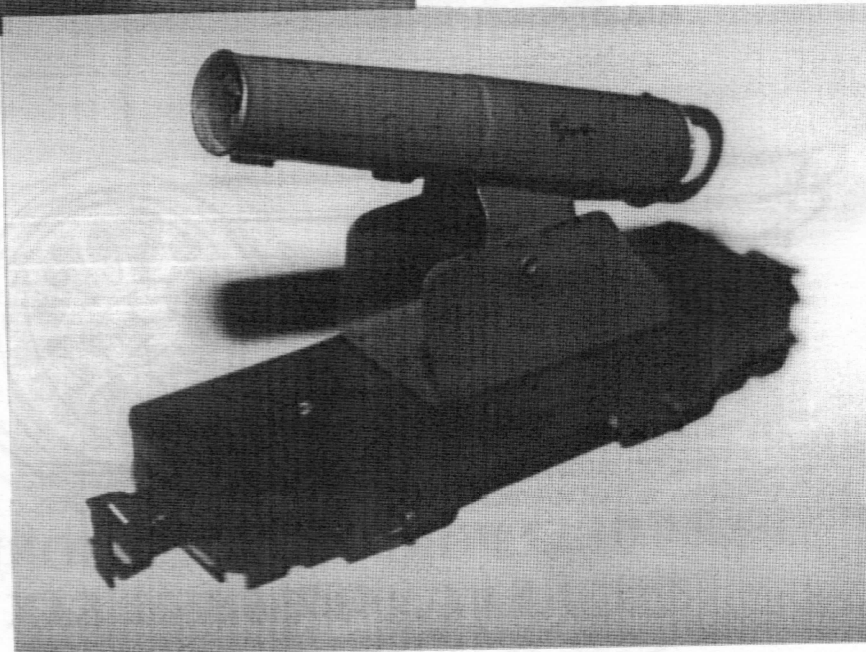
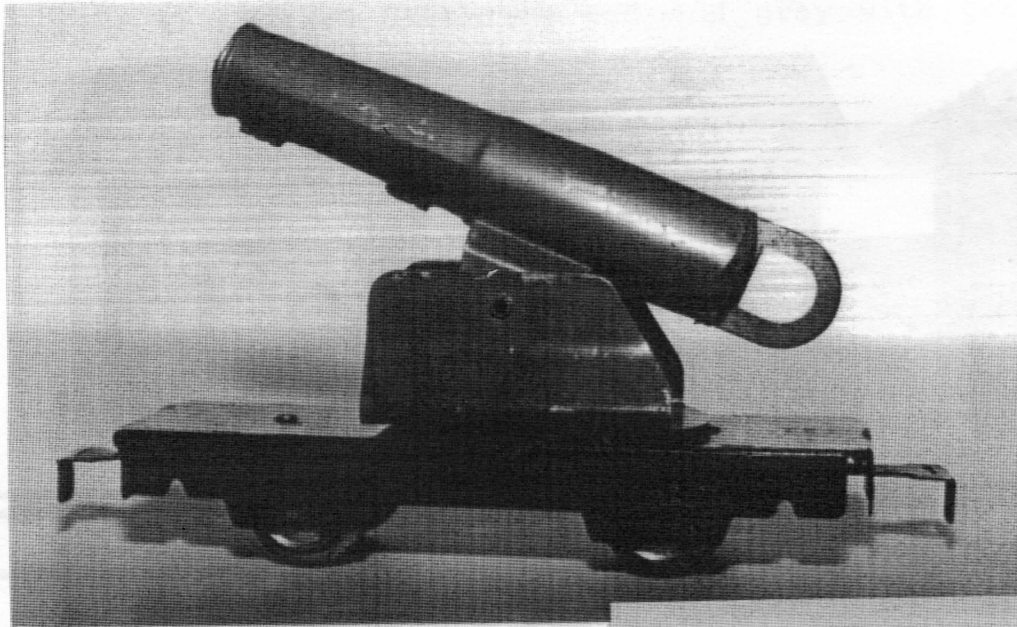
Physically, the cannon barrel is long (70 feet) and slender. Each truck has 12 wheels. Since the cannon barrel exceeds the length of the car, it is assumed that probably the cannon car rode behind a flatcar. A date of " 1939 " is shown on all axle covers. The top of the frame was too high off the ground to see any details of how the cannon is elevated or how it was loaded.

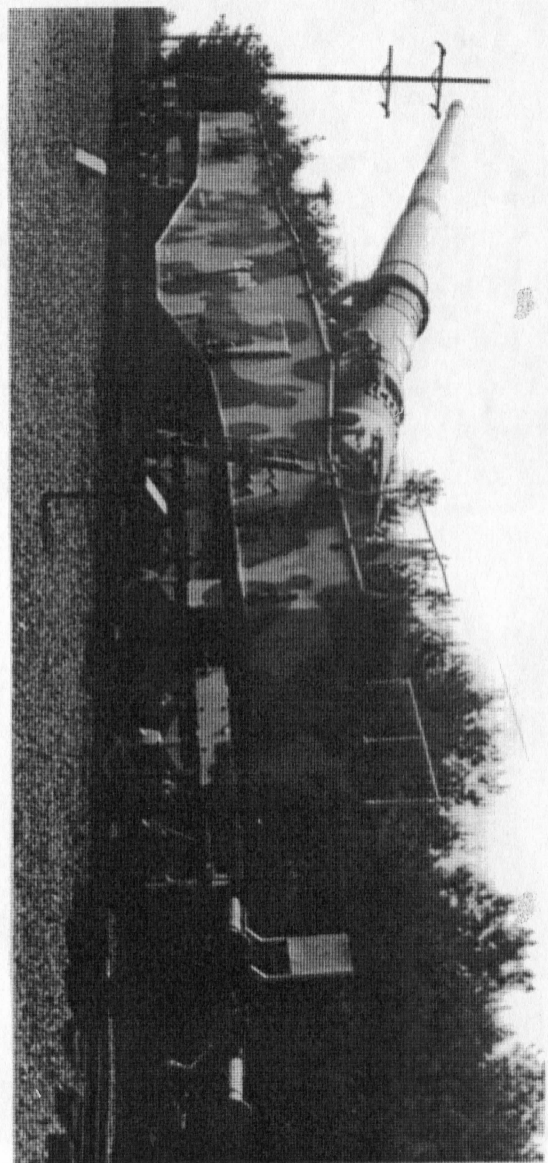
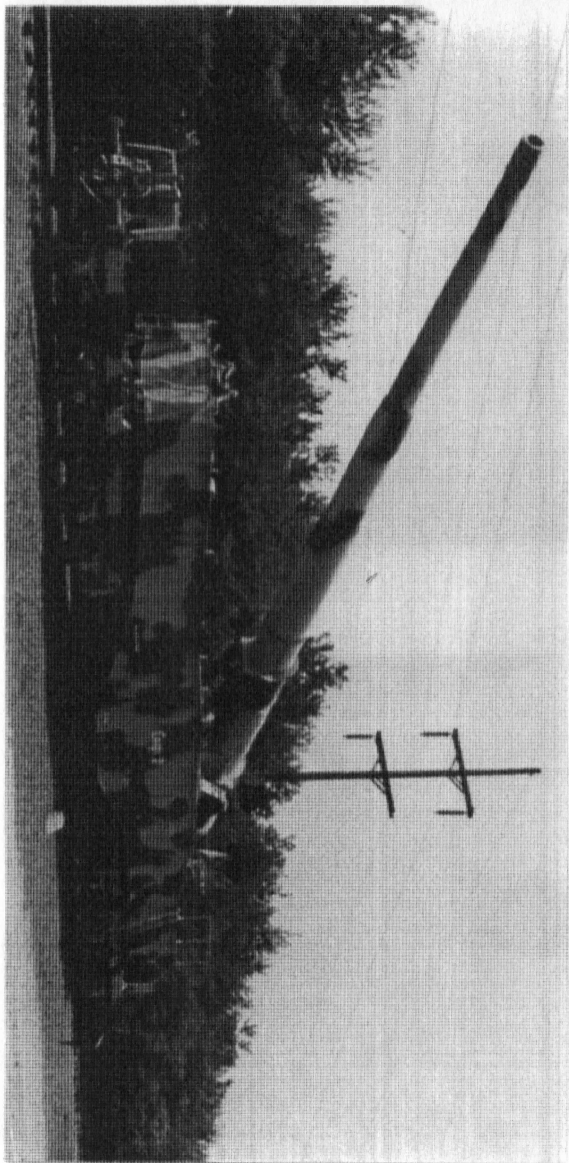
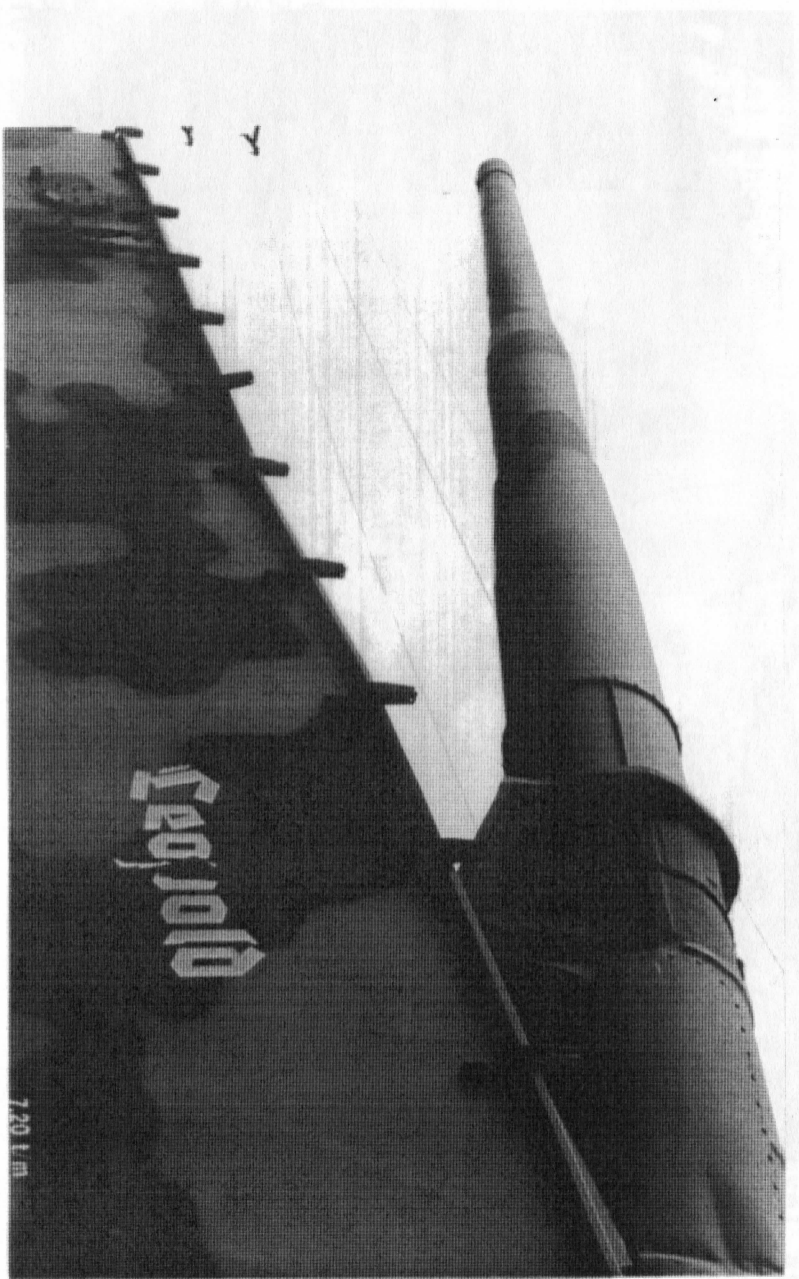
The Marx cannon car is capable of firing a wooden shell across a room. The Leopold cannon, according to the sign next to the cannon car, fired a 550 pound shell approximately 31 miles !

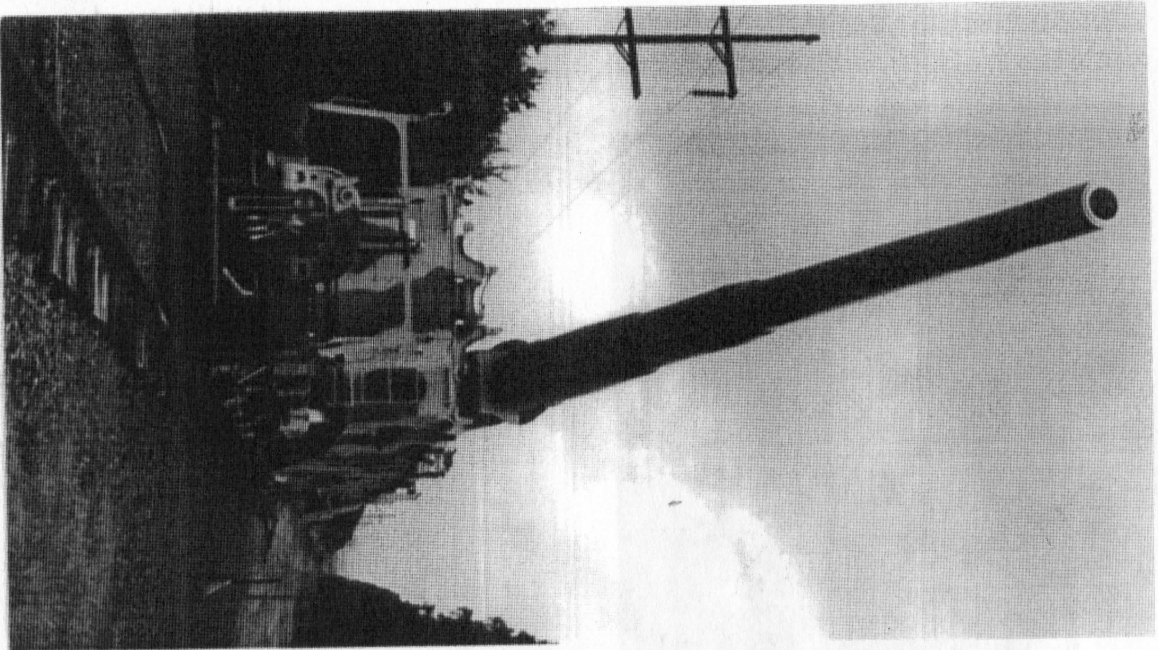
Sincerely,

Bob

Bob Burgio







ANZIO ANNIE (LEOPOLD)

This giant railway gun was used by the German army against Allied troops attempting to break out of the Anzio beachhead in 1944. Except when firing, this gun was hidden in a tunnel and easily rolled in and out for use. This weapon, which extracted a very heavy toll in life and equipment, was sabotaged and abandoned by the Germans as the Allies broke out of the beachhead. ANZIO ANNIE weighs 230 tons, has a 70 foot long barrel and fired 550 pound shells approximately 31 miles

1 MAR 82



Spezialwagen

Dessart Berlin W353

FOR SALE

#161H Dump unit, not original wiring with a repo tray, shovel and coal shoe. (mint) \$100.00. Harlan Broers, 651-653-7436, 4:30 - 9:30 pm central.

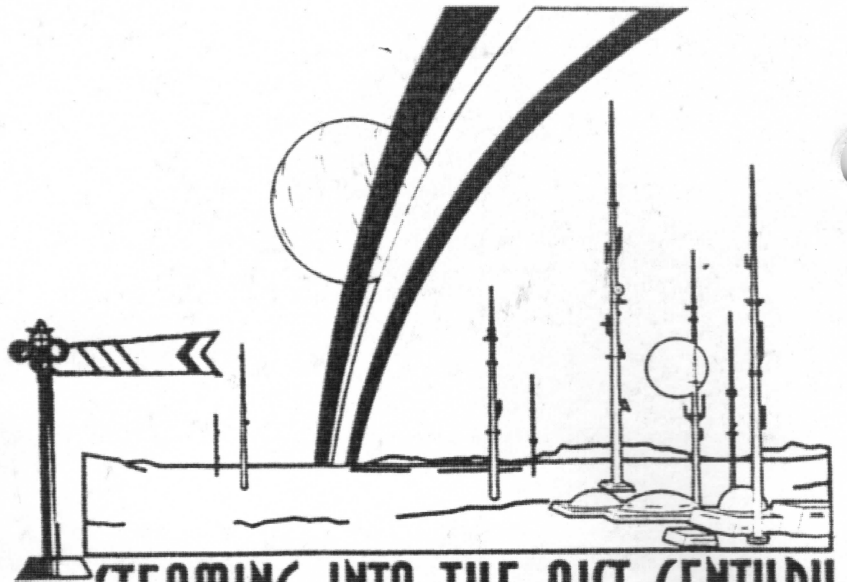
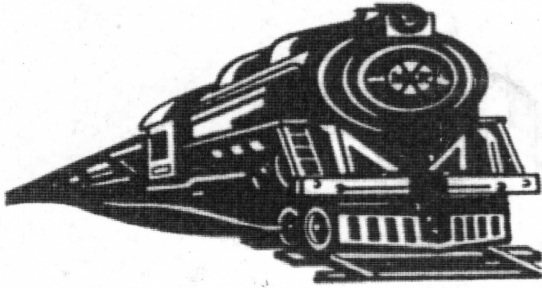
Set 9735 \$75.00. Set 51350 Complete in all respects \$125.00. Set 52850 complete rolling stock some accceys \$80.00. Set 4310 nice box \$55.00 (3) 1095 shells and parts to make AA unit \$45.00. Harv Tremper, 5074 Nipher Rd., Bath, NY 14810. 607-566-8310. 7-9pm est. SASE for list.

WANTED

Western Pacific gray and yellow A/AB or ABA, blue seaboard 6-inch gondola and a Glendale depot. --Norm Brickl 608-356-8028.

1. KC Southern cabooses tin.
 2. Need B&O cabooses #504, 506, 517.
 3. Fruit Growers Express 6" reefers.
 4. Pacemaker Freight 6" boxcars.

 6. English Green Link set.
 7. English Joyline cast iron engine any color.
 8. 6" flat for #5 army tank.
 9. All red 6" log car.
 10. Red 994 style engine and tender.
- Marx Claussen



MARX TRAINS™

STEAMING INTO THE 21ST CENTURY ©

209 E. BUTTERFIELD ROAD • #228 • ELMHURST, IL 60126
TEL: (630) 941-3843 FAX: (630) 941-3829 • e-mail marxusa@aol.com
<http://www.choicemail.com/marxtrains/> and <http://www.trainexchange.com/marx.htm>

Adult collectibles - Not intended for children

Steve, This is your last issue. Please renew now. Hope your collecting is going well. Happy holidays to you and yours.

Marx @ Law

COLLECTING WITH MARX
7475 E. State Hwy YY
SPRINGFIELD, MO. 65802



~~Steve L...~~
~~...~~
~~...~~