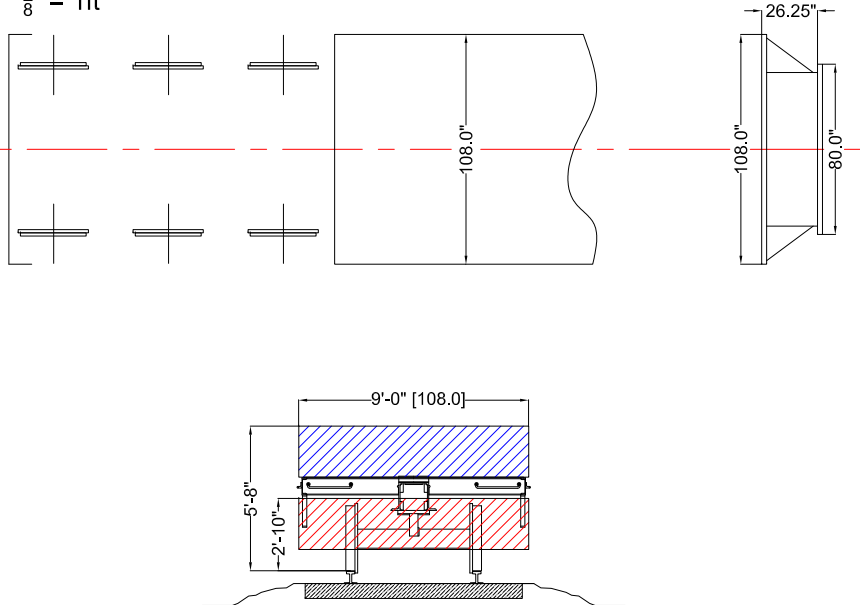


Section "D-D"

1/8" = 1ft



DESIGNATION:	CCRX 40016
LOAD LIMIT:	640,000 Lbs
LIGHT WEIGHT:	225,000 Lbs
DECK LENGTH:	30'-0"
DECK WIDTH:	9'-0"
DECK HEIGHT (UNLOADED):	36"
DECK HEIGHT (LOADED):	32" (with 375,000 Lbs)
AXLE LOAD AT GROSS CAPACITY:	72,083 Lbs
CG HEIGHT:	32"
WHEELS:	24 (33"Ø)
AXLES:	12 (7"Ø ROLLER BEARINGS)
CURVES:	MAX. 150'-0" RADIUS
LOAD BEARING:	MAX CAPACITY AT 18' UNIFORM DISTRIBUTION



Contractor's Cargo Company
 Compton, CA
 Tel: (301) 609 1957
 Houston, TX
 Tel: (281) 456 9000
 www.contractorscargo.com



HLI Rail & Rigging, LLC
 Managed Rail Fleet
 10330 S-Lake Road
 Houston, TX 77070
 Tel: (281) 826 0009
 Fax: (281) 826 0094
 www.hli.us.com

Drawn By:	HLIC
Date:	03/10/2011
Scale:	NONE
Dwg #:	40016H-00-10

CCRX 40016

Depressed Deck 12 Axle Rail Car