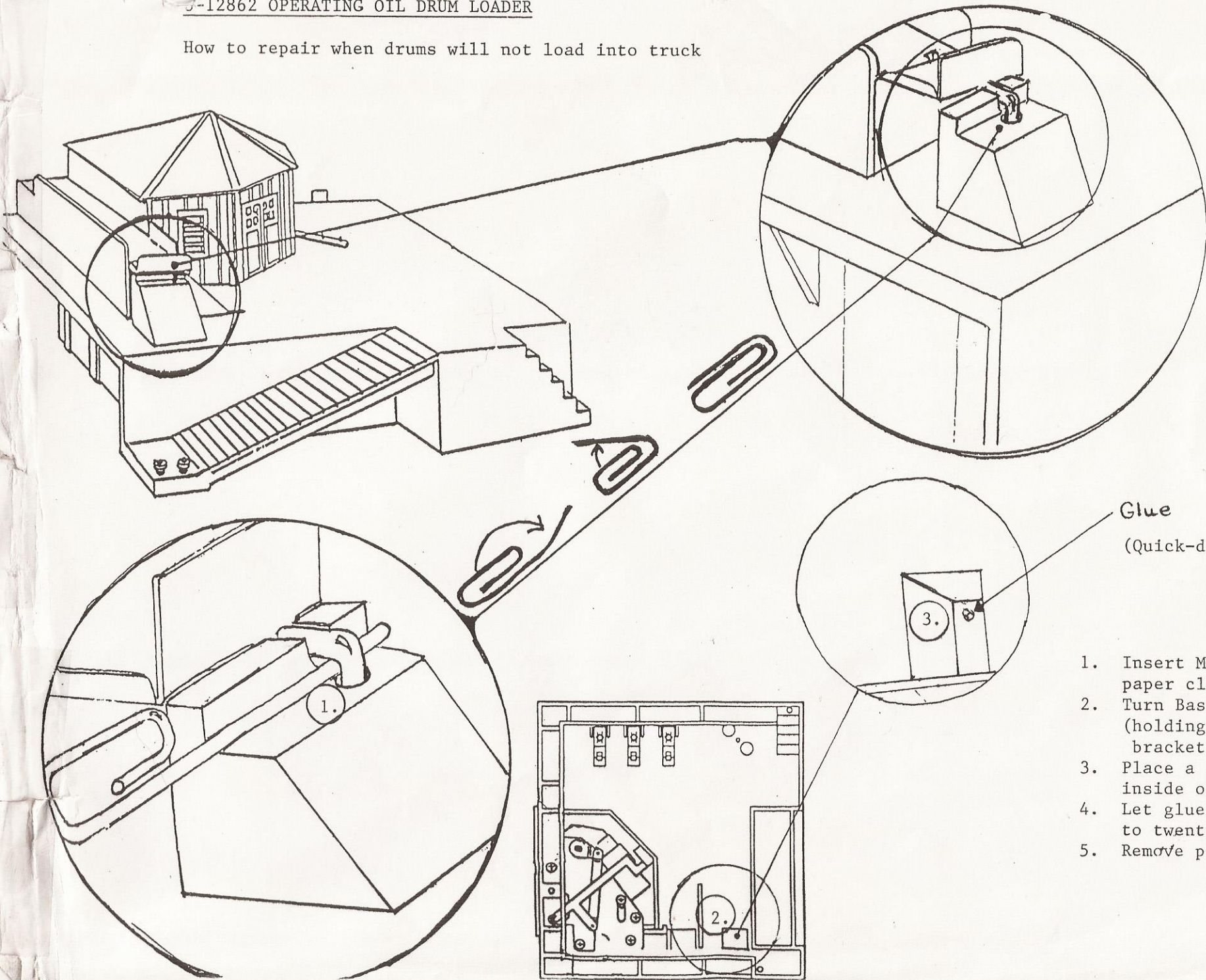


5-12862 OPERATING OIL DRUM LOADER

How to repair when drums will not load into truck



Glue
(Quick-dry type)

1. Insert Medium size paper clip here.
2. Turn Base upside-down (holding pivot bracket down w/finger)
3. Place a drip of glue o inside of base.
4. Let glue dry for ten to twenty minutes.
5. Remove paper clip.