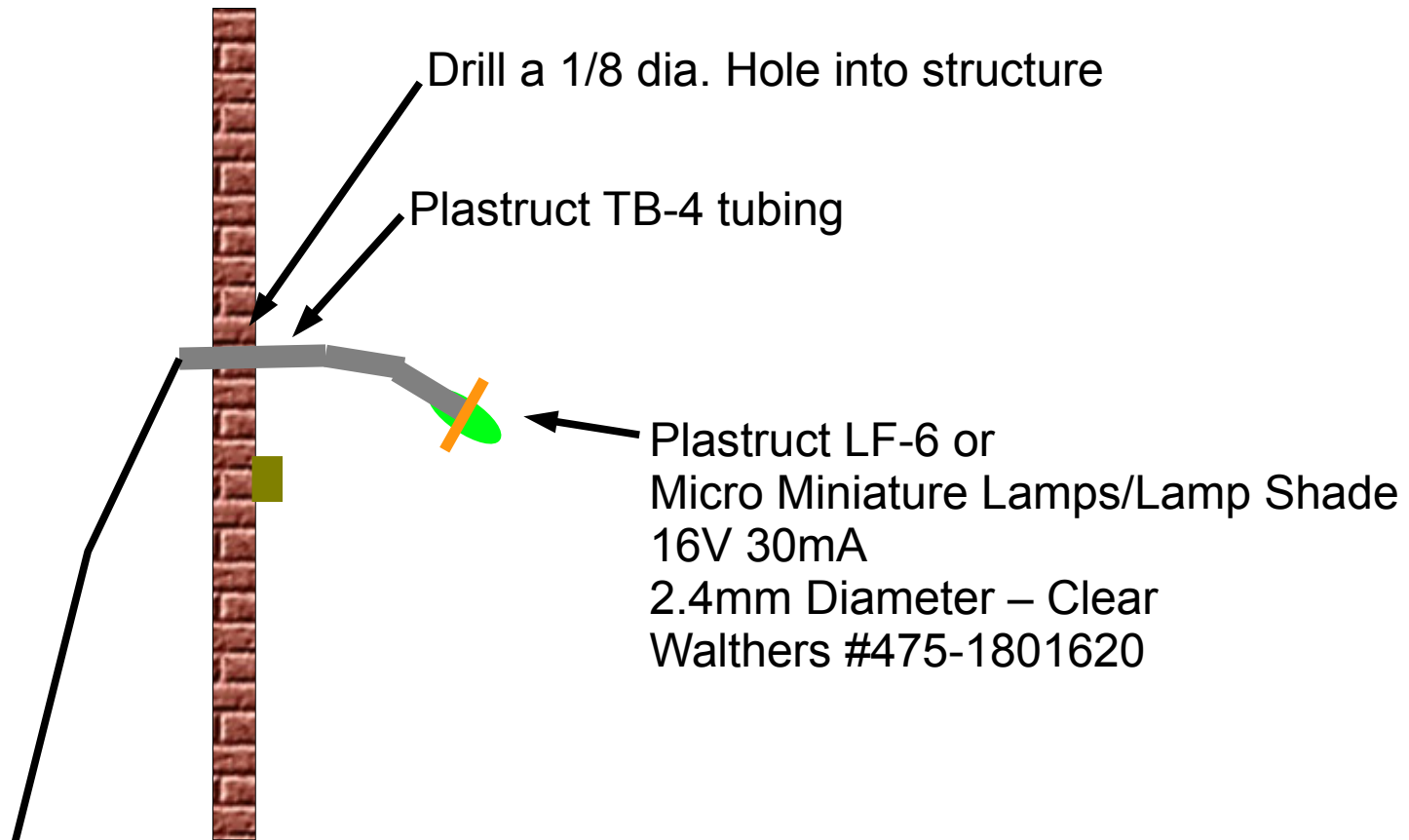
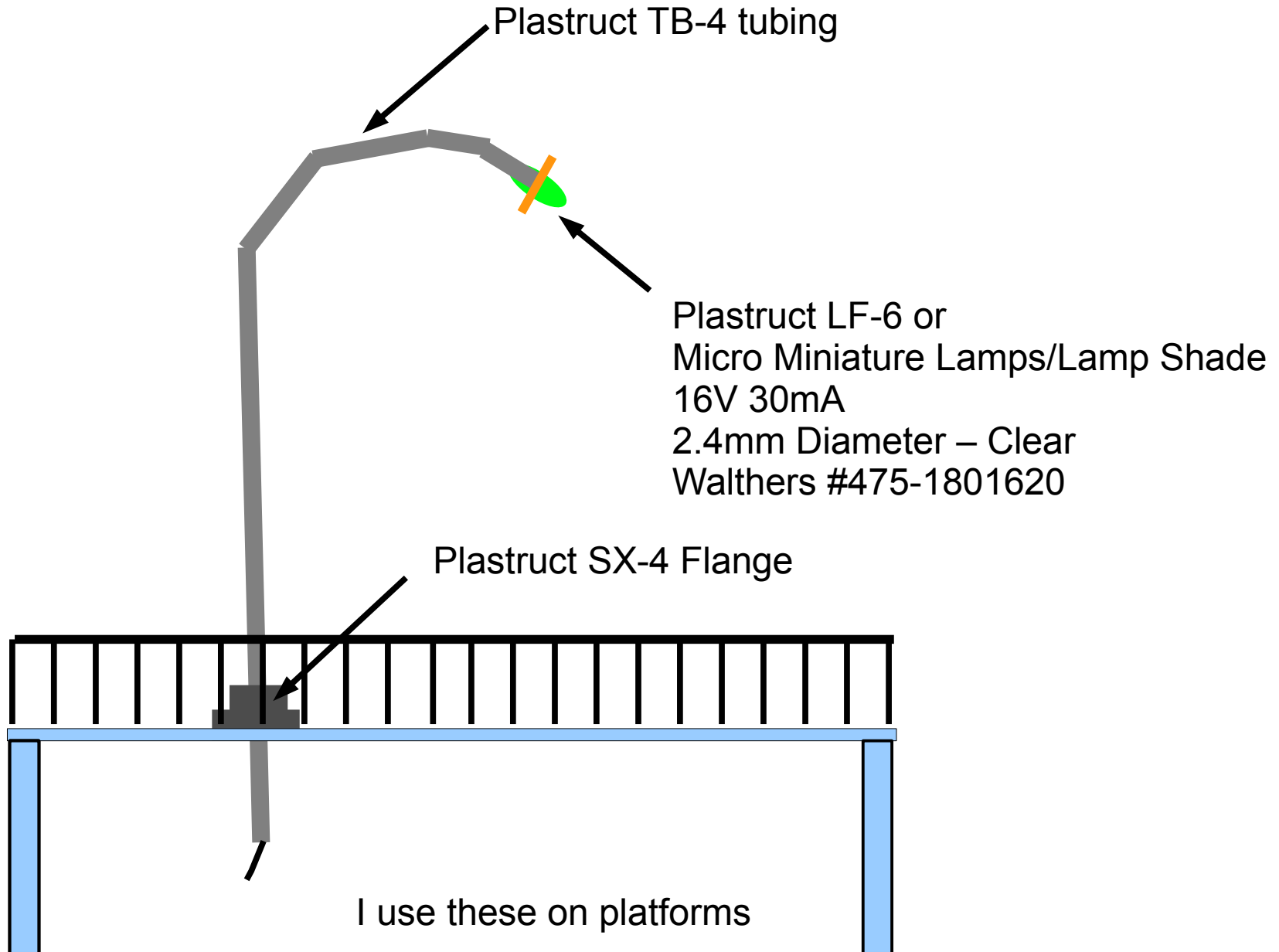


Making Lamp Posts

For building walls



Making Free Standing Lamp Posts



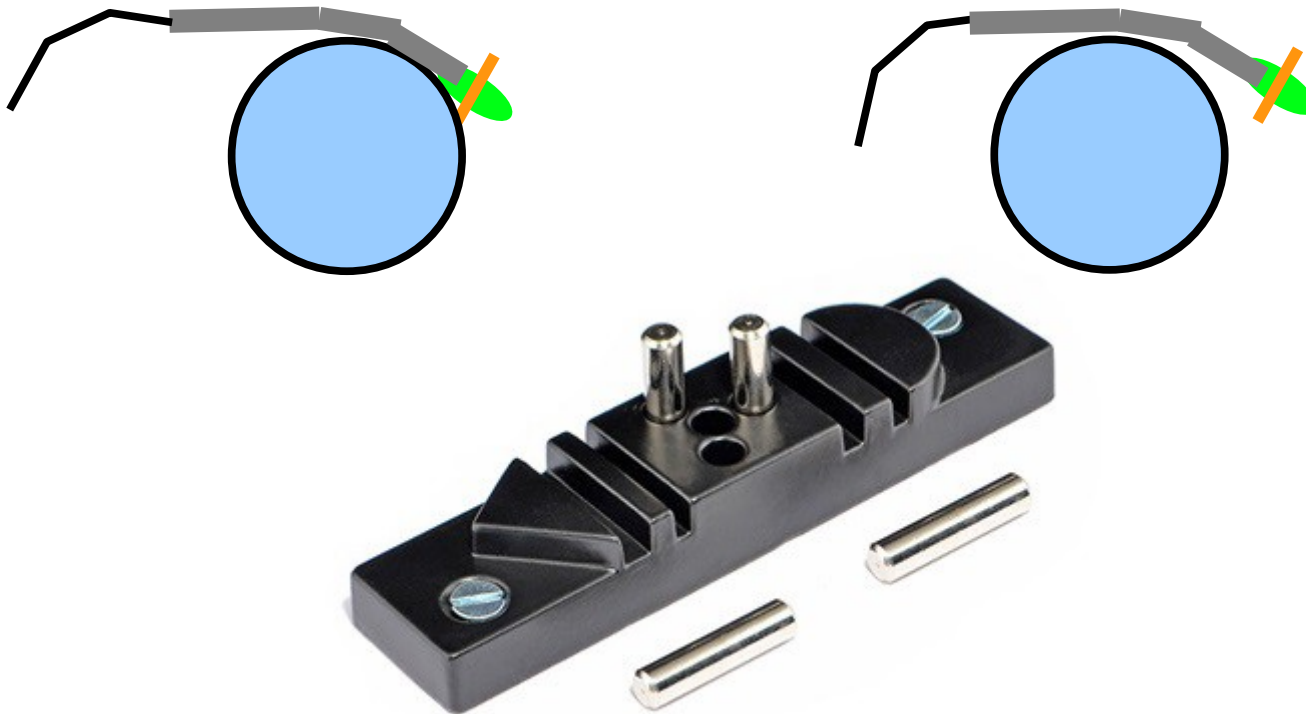
Making Building Lamp Posts

Cut off the length of tubing required.

I usually bend in two spots for building posts and in four spots for standing lamp posts.

I use the Micro Mark “Economical Strip and Wire Bending Jig” Item #: 60401

Practice tube bending for a bit to get the hang of it – shoot for a decent bend not a crimped bend.



Making Building Lamp Posts

If using the Micro Miniature Lamps/Lamp metal Shade ream out one end of the TB-4 tubing with an Exacto blade so the lamp shade fits into the tubing.

If using the Plastruct LF-6 plastic shade using 1/8 inch drill bit (hand held) to carefully ream out the top of the lamp shade. You can also cut the top off and drill all the way through.

To glue the shades in place use plastic cement for TB-4 / LF-6 and super glue for the TB-4 / metal shade. Apply the adhesive to the outside. I usually insert a brass rod into the tubing and while holding the lamp shade in place move the rod back and forth to prevent any glue from clogging the inside of the tubing.

After the glue dries thread the lamp through the lamp shade then into the tubing.

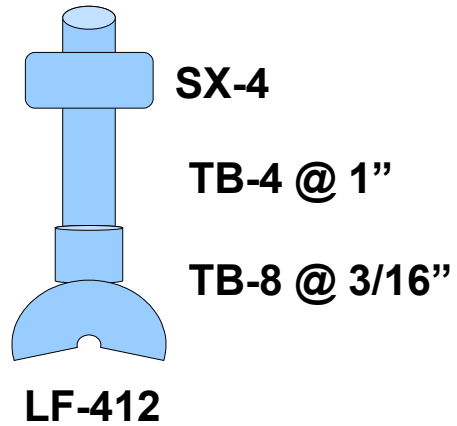
Industrial Hanging Lamps



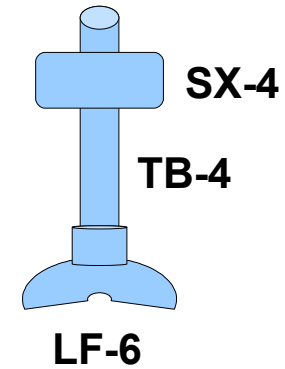
Industrial Hanging Lamps



Industrial Hanging Lamps



TB-8 fits inside LF-412
TB-4 fits inside TB-8



Drill 1/8 inch hole in LF-6
for TB-4

Interior Lighting



#510 12-16v- 12" leads 4 piece clear
\$6.49

- Bulb's comes with special peel off backing in which can be stuck in a house, loco etc. or to just light up a background.
- Pack 12

Interior Lighting



E10 Lamp Base with Screw Terminals
Model: 272-357 | Catalog #: 272-357



14.4V 100mA Incandescent Flashlight Bulb (2-Pack)
Model: 52 | Catalog #: 272-1127

Attach to floor or ceiling out of sight of windows
These lamps work fine with the transformer's 14 volt
accessory output.