



Big Boy

4-8-8-4

30-1129-1
30-1129-0



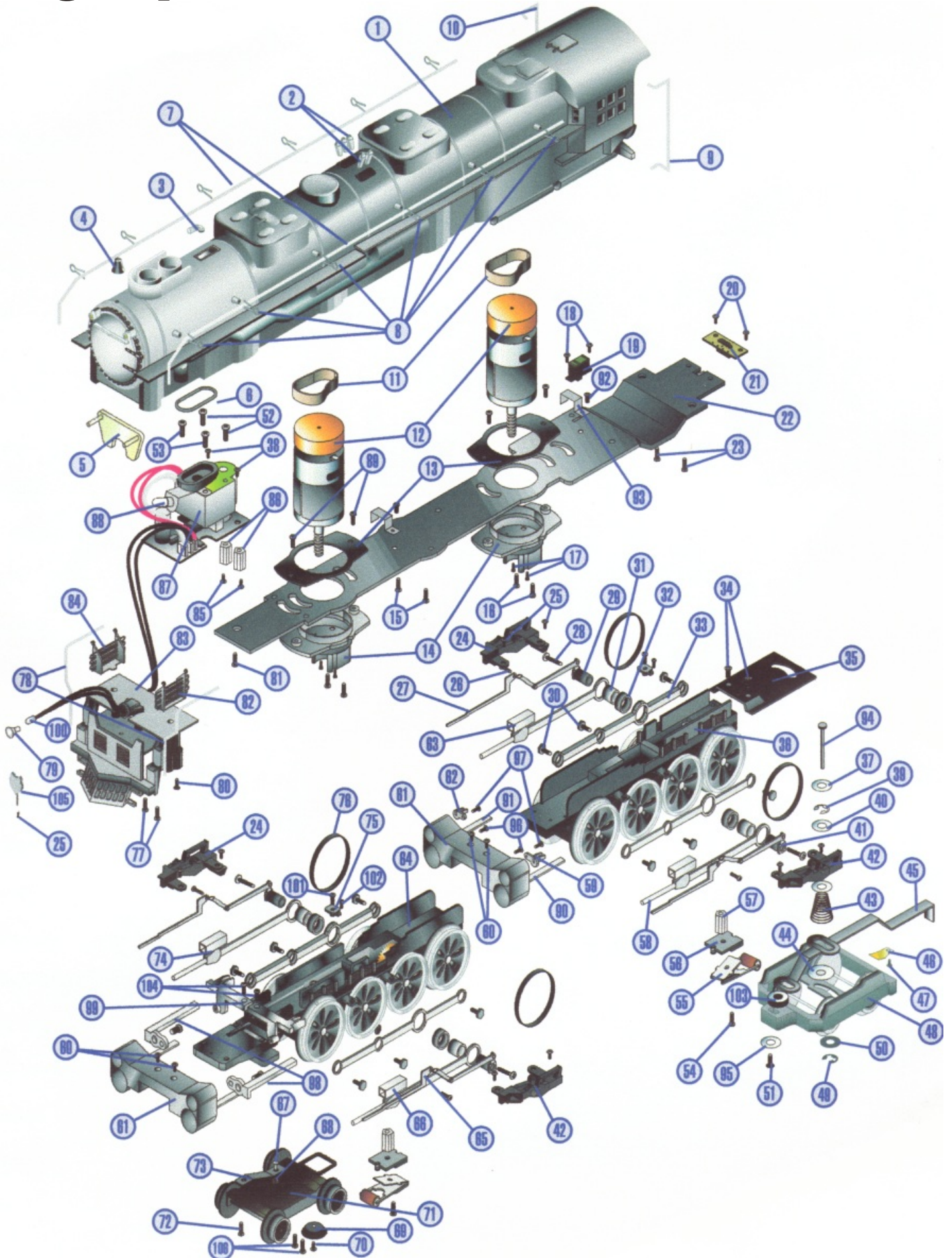
Big Boy 4-8-8-4

Engine Parts

Name and Number	Part #	Price Per Unit	Name and Number	Part #	Price Per Unit
1.) Shell (UP)(#4020)	FB-1200073	* 185.00	72.) Screw	IA-0000028	0.15
2.) Pop-off Valve	FB-1200074	2.00	73.) Bracket	IH-1230005	1.00
3.) Whistle	FB-1200003	4.00	74.) Drive Rod (front right)	EC-1210014	4.00
4.) Bell	FB-1200002	4.00	75.) Pick-up Insulator (top)	BD-0000026	2.00
5.) Marker Lens	FA-1230019	2.00	76.) Traction Tire	DE-0000025	0.75
6.) Rubber Gasket Ring (smoke unit)	IB-0000003	1.00	77.) Screw	IA-0000050	0.15
7.) Handrail (both)(boiler)	FB-1200075	2.00	78.) Handrail (both)	FB-1200077	2.00
8.) Stanchion	FB-1200024	0.25	79.) Headlight Lens	FA-1230020	2.00
9.) Handrail (cab, left)	FB-1220018	1.00	80.) Screw	IA-0000003	0.15
10.) Handrail (cab, right)	FB-1210018	1.00	81.) Screw	IA-0000050	0.15
11.) Rubberband	BI-4500004	0.50	82.) Radiator (left)	FB-1220019	8.00
12.) Motor	BE-0000011	20.00	83.) Pilot	DG-1230009	30.00
13.) Motor Plate	BI-1200001	3.00	84.) Radiator (right)	FB-1210019	8.00
14.) Motor Mount	BI-1200002	15.00	85.) Screw	IA-0000016	0.15
15.) Screw	IA-0000050	0.15	86.) Nut	IC-0000005	0.50
16.) Screw	IA-0000011	0.15	87.) Smoke unit	AA-1200012	50.00
17.) Screw	IA-0000001	0.15	88.) 18v Bulb	CA-0230001	1.00
18.) Screw	IA-0000007	0.15	89.) Screw	IA-0000011	0.15
19.) Switch	BB-1040005	5.00	90.) Drive Rod Guide (left)	EC-1220015	2.00
20.) Screw	IA-0000027	0.15	91.) Drive Rod Guide (Right)	EC-1210015	2.00
21.) Wire Harness Plug PCB	BB-1040005	8.00	92.) Screw	IA-0000021	0.15
22.) Chassis	DF-1200012	* 15.00	93.) Wire Strap (Metal)	IH-0000013	1.00
23.) Screw	IA-0000050	0.15	94.) Pin	IG-0000009	0.50
24.) Motion Hanger (right)	EA-1210003	4.00	95.) Washer	ID-0000030	0.15
25.) Screw	IA-0000003	0.15	96.) Screw	IA-0000051	0.15
26.) Screw	IA-0000086	0.15	97.) Screw	IA-0000027	0.15
27.) Eccentric Rod (rear)	ED-1240001	1.00	98.) Drive Rod Guide (l)	ED-1220017	4.00
28.) Screw	IA-0000052	0.15	99.) Drive Rod Guide (r)	ED-1210017	4.00
29.) Eccentric Assembly (right)	ED-1210014	5.00	100.) Bulb (18v, grain of wheat)	CA-0000005	2.00
30.) Bolt (side rod)	IA-0000087	1.00	101.) Screw	IA-0000016	0.15
31.) Spacer (inner)	ID-1250005	1.00	102.) Screw	IA-0000044	0.15
32.) Spacer (outer)	ID-1250006	1.00	103.) Spacer	ID-0000027	0.50
33.) Side Rod (both sides)	EC-1250009	2.00	104.) Screw	IA-0000040	0.15
34.) Screw	IA-0000050	0.15	105.) Name/Number board	FB-1200084	5.00
35.) Truck Plate	DF-1200013	* 5.00	106.) Screw	IA-0000021	0.15
36.) Drive Block (rear)	DF-1240001	* 50.00			
37.) Washer	ID-0000048	0.15			
38.) Screw	IA-0000016	0.15			
39.) E-clip	IF-0000009	0.15			
40.) Washer	ID-0000012	0.15			
41.) Eccentric Assembly (left)	ED-1220014	5.00			
42.) Motion Hanger (Left)	EA-1220003	4.00			
43.) Spring	IE-0000008	0.50			
44.) Washer	ID-0000013	0.15			
45.) Drawbar	FB-1200076	3.00			
46.) Ground Strap	II-4500004	1.00			
47.) Screw	IA-0000021	0.15			
48.) Truck (trailing)	DA-1240018	20.00			
49.) E-clip	IF-0000009	0.15			
50.) Washer	ID-0000012	0.15			
51.) Screw	IA-0000028	0.15			
52.) Screw	IA-0000003	0.15			
53.) Screw	IA-0000011	0.15			
54.) Screw	IA-0000015	0.15			
55.) Pick-up	BD-0000025	5.00			
56.) Pick-up Insulator (bottom)	BD-0000001	2.00			
57.) Nut	IC-0000001	0.25			
58.) Drive Rod (left rear)	EC-1220013	4.00			
59.) Eccentric Rod Guide (left rear)	ED-1220015	2.00			
60.) Screw	IA-0000062	0.15			
61.) Steam Chest	EF-1250001	* 15.00			
62.) Eccentric Rod Guide (right rear)	ED-1210015	2.00			
63.) Drive Rod (right rear)	EC-1210013	4.00			
64.) Drive Block (front)	DF-1230001	* 50.00			
65.) Eccentric Rod (front, both)	ED-1230001	1.00			
66.) Drive Rod (front left)	EC-1220014	4.00			
67.) Pin	IG-0000003	0.50			
68.) Spring	IE-0000009	0.50			
69.) Spacer	ID-1030001	0.50			
70.) Screw	IA-0000028	0.15			
71.) Lead Truck	DA-1230004	20.00			

***Requires Exchange**

Big Boy 4-8-8-4



Big Boy 4-8-8-4 Tender

Tender Parts

Name and Number	Part #	Price Per Unit
1.) Shell (#4020 U.P.)	GA-1200028	*85.00
2.) Handrail	GA-1200029	2.00
3.) Stanchion	FB-1200024	0.70
4.) Tender Casting	GA-1200030	*20.00
5.) Screw	IA-0000027	0.15
6.) Battery	BG-4000001	9.95
7.) Screw	IA-0000022	0.15
8.) Bracket	IH-0000002	1.00
9.) Speaker	BF-4500007	8.95
12.) Battery Leads	BC-4000009	3.00
13.) Heat Sink	AI-0000003	2.00
14.) Volume Pot	BI-4500008	5.00
15.) Sound Chip	N/A	*19.00
16.) Board (top)	AE-4500001	*100.00
17.) Board (bottom)	AD-4500001	*60.00
18.) Insulator	BI-0000003	0.15
19.) Insulator Washer	ID-0000025	0.15
20.) Screw	IA-0000003	0.15
21.) Bracket	IH-0000015	2.00
22.) Chassis	GB-1200019	*15.00
23.) Weight	II-0000003	5.00
24.) Bracket	IH-0000015	2.00
25.) Screw	IA-0000072	0.50
26.) Nut	IC-0000007	0.50
27.) Pin	IG-0000013	0.50
28.) Tender Harness	BC-1200008	8.00
29.) Truck Side (r)	DB-1210001	12.00
30.) Truck Side (l)	DB-1220001	12.00
31.) Screw	IA-0000050	0.15
32.) T-bar	IG-0000001	0.50
33.) Screw	IA-0000035	0.15
34.) Screw	IA-0000081	0.15
35.) Screw	IA-0000050	0.15
36.) Washer	ID-0000009	0.15
37.) E-clip	IF-0000002	0.15
38.) Spring	IE-0000023	0.50
39.) Washer	ID-0000013	0.50
40.) Truck	DA-1230012	15.00
41.) E-clip	IF-0000002	0.15
42.) Screw	IA-0000082	0.15
43.) Screw	IA-0000039	0.15
44.) Proto-coupler	DD-4000001	10.00
45.) Truck	DA-1240018	20.00
46.) Spring	IE-0000007	0.50
47.) E-clip	IF-0000002	0.15
48.) Washer	ID-0000009	0.15
49.) Screw	IA-0000028	0.15
50.) Spacer	ID-0000016	1.00
51.) Screw (for Proto-sound bracket)	IA-0000003	0.15
52.) Washer (for volume pot)	ID-0000034	0.15

Whistle Only Parts

Name and Number	Part #	Price Per Unit
10.) Switch (small)	BB-0000009	5.00
11.) Screw	IA-0000076	0.15
13.) Heat sink	AI-0000012	2.00
16.) Board (whistle)	AF-4500005	29.95
17.) Board (DCRU)	AC-0000001	39.95
21.) Bracket (DCRU)(U-shaped)	IH-0000035	2.00
34.) Screw	IA-0000081	0.15
50.) Spacer	ID-0000047	0.50
51.) Screw (for DCRU bracket)	IA-0000022	0.15
NS.) Coupler	DD-4000006	3.00
NS.) Armature	DD-4000007	1.00

***Requires Exchange**

Big Boy 4-8-8-4 Tender

