

LIONEL SERVICE MANUAL

NO. 342 CULVERT PIPE LOADER

No. 342 Culvert Pipe Loader, first made in 1956, is a companion unit to No. 345 Culvert Pipe Unloader. The two units can be used separately or installed side by side and interconnected to provide continuous loading and unloading operation.

The loader is powered by a vibrator motor similar in operating principle to the motor used in No. 464 Lumber Mill and described on Page 1, Section ACC-464. Like all motors of this type it cannot be operated on d.c. but requires low voltage a.c. The vibration of the vibrator coil armature is converted to rotation of the drive pulley by means of the nylon drive line and spring. The traveling crane or conveyor is linked to the motor, as illustrated schematically in the diagram below. As the conveyor reaches the loading platform it picks up a section of culvert pipe. After the conveyor reaches the proper position over the track, it releases the culvert pipe dropping it to the inclined ramp of the No. 6342 Gondola, supplied with the loader.

Adjusting the Conveyor Travel

If the traveling conveyor does not reach the end of the travel at the platform or the track, first check the base at the points where it is bent to provide track channel. Correcting the bend over the edge of

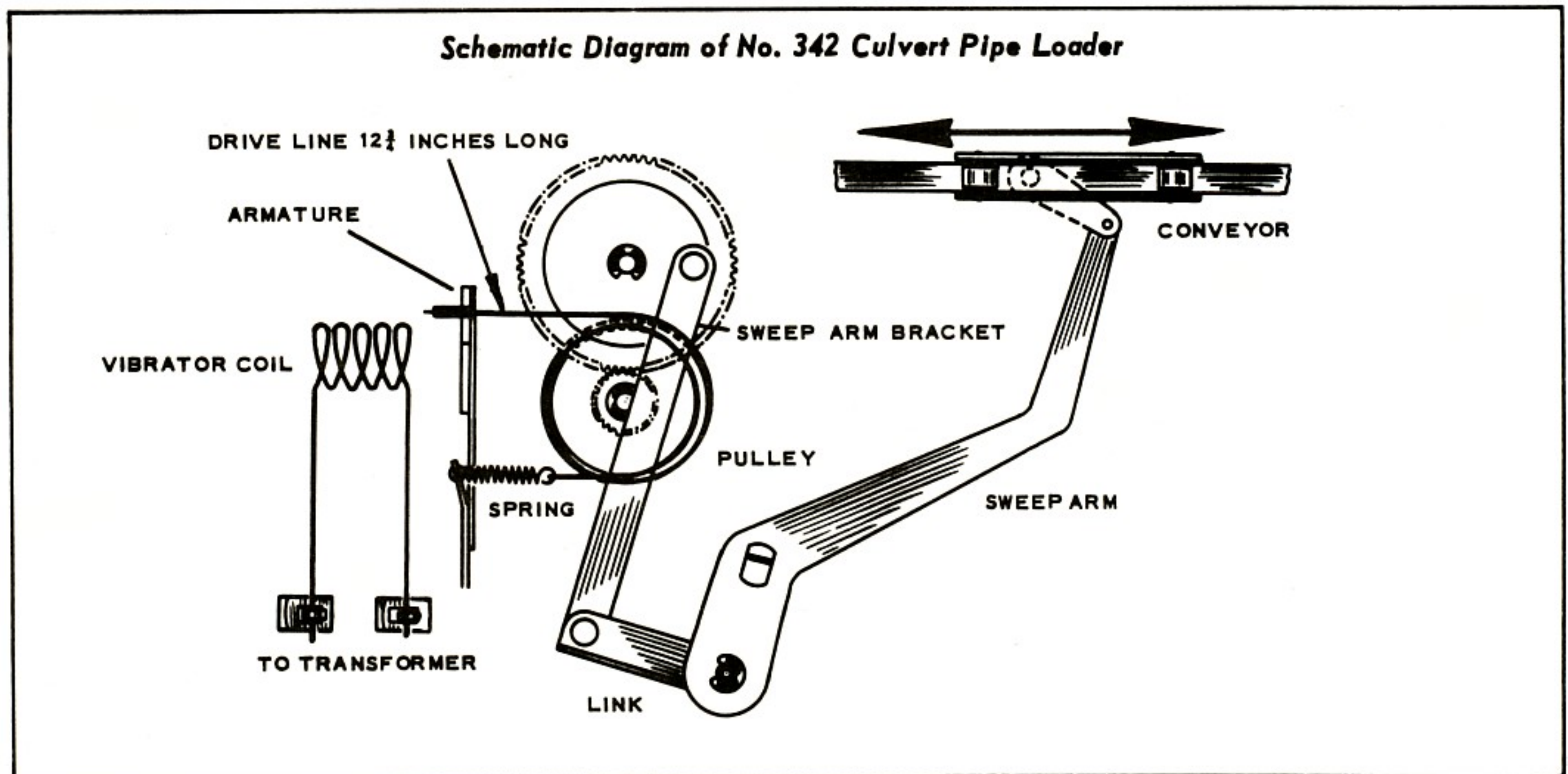
the work bench will adjust the position and alignment of the vertical supports of the traveling conveyor structure. An additional adjustment of the conveyor travel is provided by bending the center of the sweep arm bracket.

Installing New Drive Line

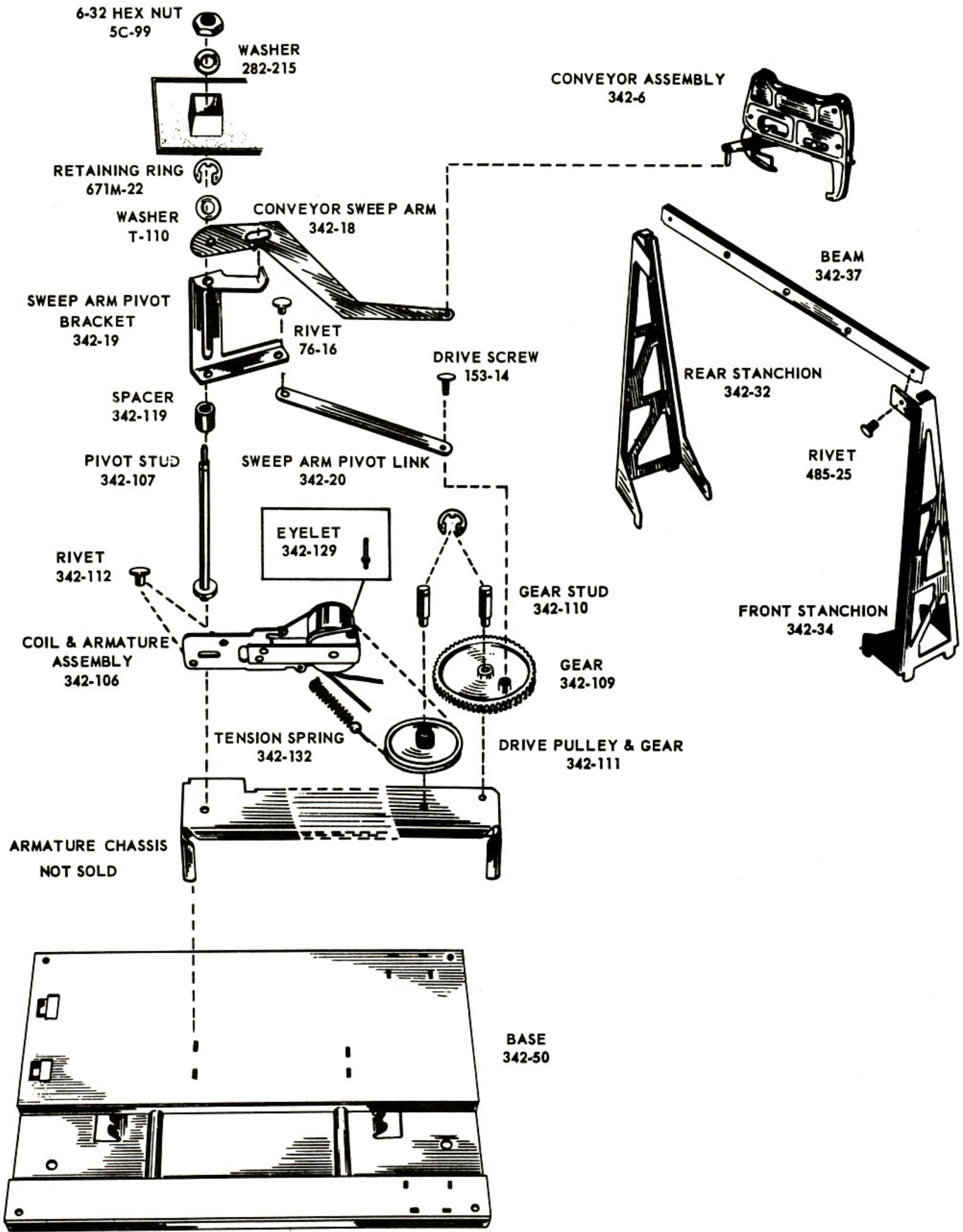
The drive line used in this mechanism is a special de-waxed 12-lb. test braided nylon spinning line and is available from the Lionel Service Department in 4-foot lengths No. 345-80. The required length of the line is given in the illustration below. To install drive line, tie the proper length of line to the drive spring, wind it $1\frac{1}{2}$ around the drive pulley, and thread it through the eyelet attached to the armature. Stretch the spring until it measures $\frac{5}{8}$ of an inch in length and crimp the eyelet to hold the line securely in place. To reduce or increase spring tension, adjust the tab to which the spring is attached with a pair of pliers.

NOTE: Excessive tightening of the nut on roof may cause the motor to slow down or to stop.

Sharp edges or burrs on the edge of the culvert section may cause it not to fall in the car properly.

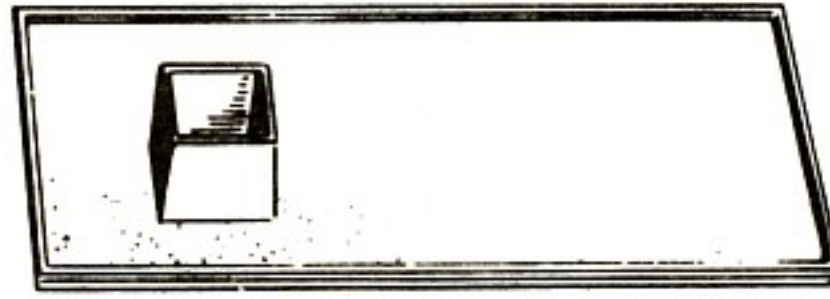


LIONEL SERVICE MANUAL

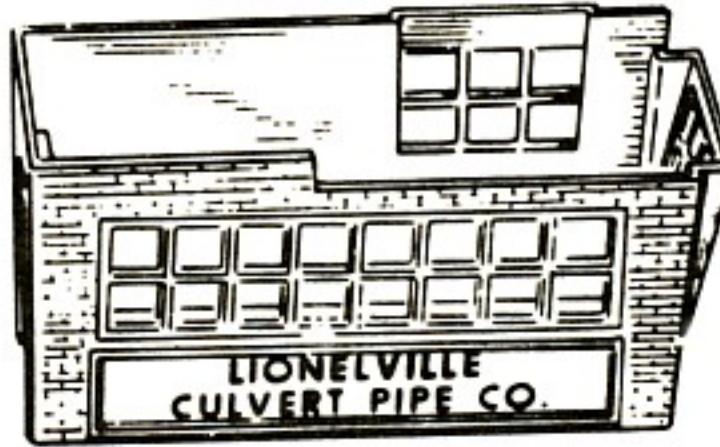


LIONEL SERVICE MANUAL

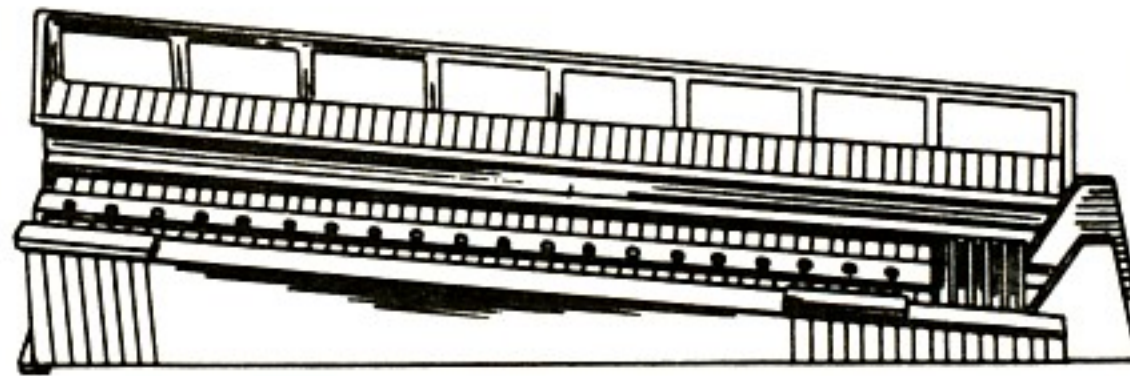
ROOF
342-23



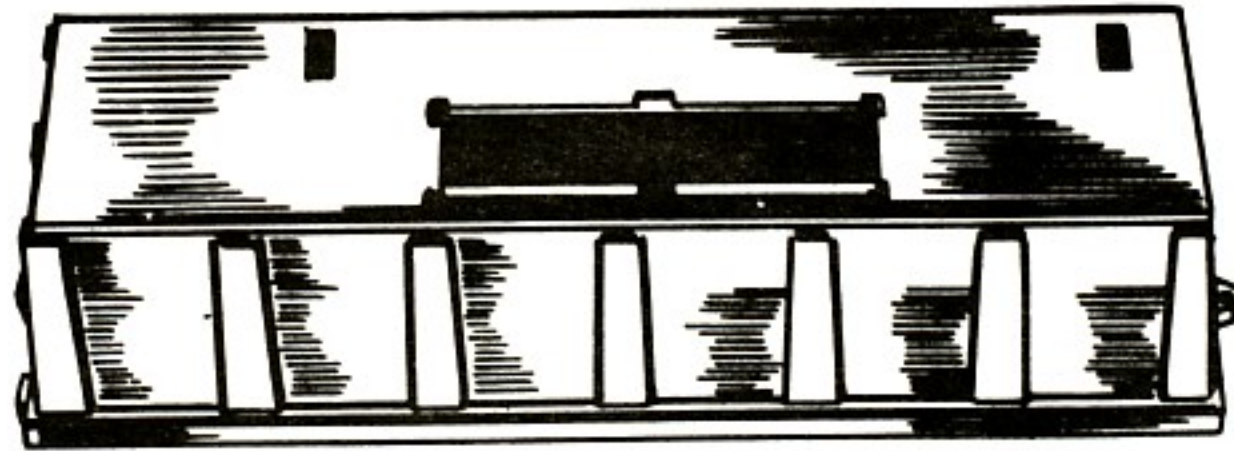
HOUSE
342-21



RAMP
342-5



PLATFORM
342-3



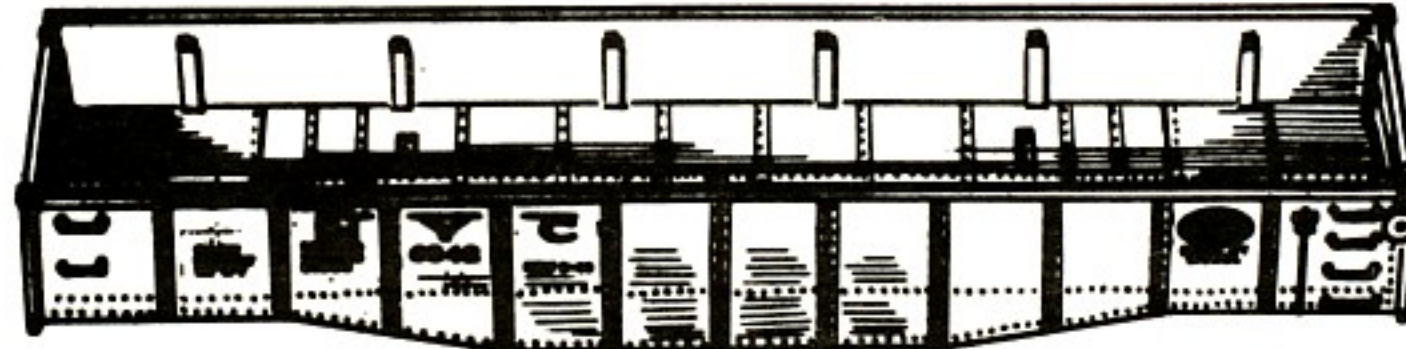
No. 6342 Gondola

RIVET
22-65



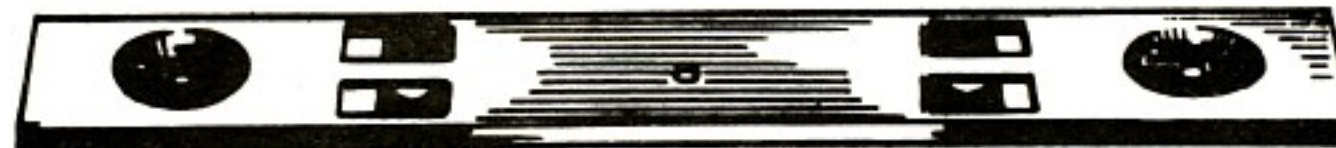
RAMP
6342-9

BODY
6342-4



TRUCK CLIP
6257-10

FRAME
6462-6



PLAIN TRUCK
479-1

BOTTOM PLATE & COUPLER
480-25



LIONEL SERVICE MANUAL

REPLACEMENT PARTS FOR NO. 342 CULVERT PIPE LOADER

Part No.	Part Name	List Price
5C-99	6-32 Hex Nut	\$.02
76-16	Rivet	.05
153-14	Drive Screw	.05
282-215	Washer	.02
342-3	Platform	2.00
342-5	Ramp	.75
342-6	Conveyor Assembly	1.00
342-18	Conveyor Sweep Arm	.20
342-19	Sweep Arm Pivot Bracket	.15
342-20	Sweep Arm Pivot Link	.05
342-21	House	1.00
342-23	Roof	.50
342-32	Rear Stanchion	.40
342-34	Front Stanchion	.40
342-37	Beam	.10
342-40	Culvert Pipe	.10
342-50	Base	2.50
342-106	Coil & Armature Assembly	2.50
342-107	Pivot Stud	.30
342-109	Gear	.50
342-110	Gear Stud	.05
342-111	Drive Pulley & Gear	.25
342-112	Rivet	.02
342-119	Spacer	.05
342-129	Eyelet	.02
342-132	Tension Spring	.05
352-39	Terminal Clip	.10
485-25	Rivet	.02
671M-22	Retaining Ring	.03
T-110	Washer	.02
4 x 3/16"	R.H.S.T. "Z" Screw	.02

REPLACEMENT PARTS FOR NO. 6342 GONDOLA

Part No.	Part Name	List Price
22-65	Rivet	.02
479-1	Plain Truck	.50
480-25	Bottom Plate & Coupler	.55
6257-10	Truck Clip	.03
6342-4	Body	1.00
6342-9	Ramp	.50
6462-6	Frame	1.00

LIONEL SERVICE MANUAL

NO. 342 - CULVERT PIPE LOADER

<u>Part Number</u>	<u>Location</u>	<u>Unit Price</u>	<u>Min. Quan.</u>	<u>Description</u>
5C-99	G-62	.05	25	6-32 Hex Nut (Roof)
76-16	H-66	.05	12	Sweep Arm Rivet
153-14	I-87	.05	10	Drive Screw (Large Gear)
282-215	I-57	.02	25	Washer (Shaft)
342-3		2.00		Platform
342-5	B-65	.75		Ramp
342-6	K-81	1.50		Conveyor Assem.
342-18	K-81	.20	4	Conveyor Sweep Assem.
342-19	L-94	.15	4	Sweep Arm Bracket
342-20	H-64	.05	12	Sweep Arm Link
342-21	H-35	1.00		House
342-23	L-94	.75		Roof
342-32	H-64	.40		Rear Stanchion
342-34	K-81	.40		Front Stanchion
342-37	K-81	.10		Beam
342-40	L-84	.10		Culver Pipe
342-50	H-94	2.50		Base
342-106	H-64	3.00		Coil & Armature Assem.
342-107	L-94	.30		Pivot Stud (Long)
342-109	K-81	.50		Large Gear
342-110	K-81	.05	12	Gear Stud (Short)
342-111	L-94	.40		Drive Pulley & Gear
342-112	L-94	.02	25	Rivet (Coil & Bracket Assem.)
342-119	L-94	.05	12	Spacer (Pivot Stud)
342-129	K-81	.02	25	Eyelet (Drive Line)
342-132	L-94	.05	12	Tension Spring
352-39	G-79	.10	6	Terminal Clip
485-25	P-62	.02	25	Rivet (Beam)
671M-22	C-75	.05	12	Retaining Ring (Shaft)
T-110	N-98	.05	12	Washer (Sweep Arm)
4 x 3/16"	Q-53	.02	25	RHST "Z" Platform Screw