

Reply to "Starting new layout with Atlas track"



[INGENIERO NO1](#) ○ MEMBER

10/26/14 @ 9:05 AM *

Hi, Mike -

I found what HotWater said (below, in part) to be very true:

"Sometimes drilling a small hole into the rail provides a better electrical connection for the wire, and is easier to solder, especially the center rail."

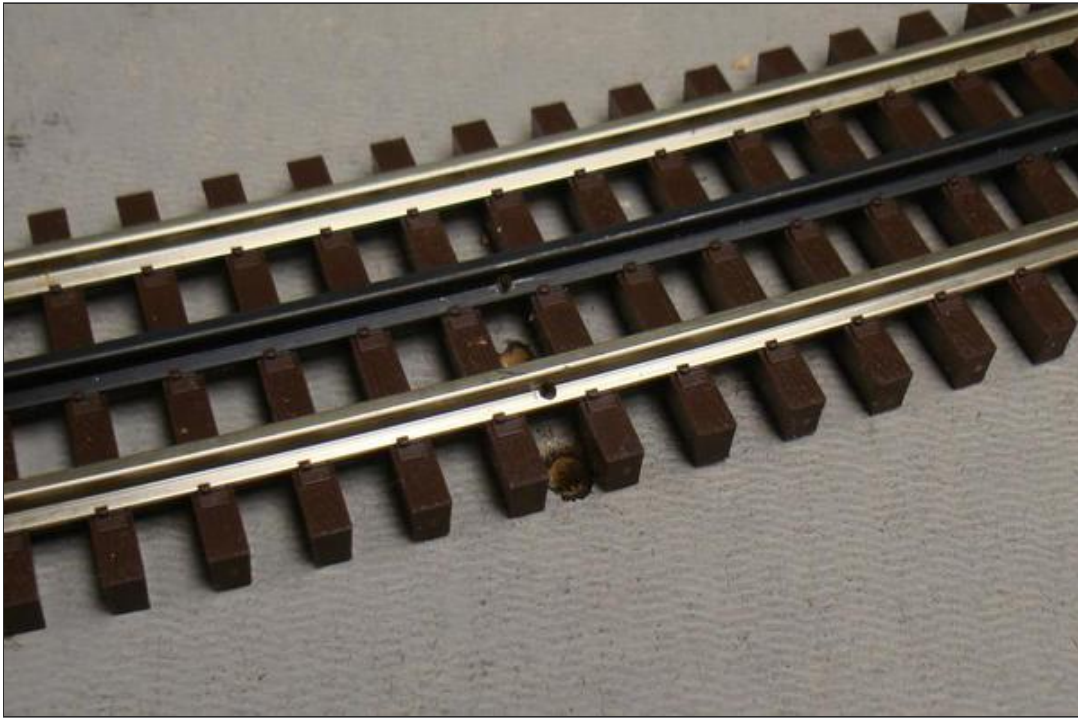
And in so doing was that I found that a Ø5/64" hole works fine with 16AWG and a #0x1/4" Pan/Phillips Head sheet metal screw to hold the wire without need for soldering.

When I started doing these connections, I used a small washer under the screw, but found that it was not necessary - see picture below w/o and w/washers.

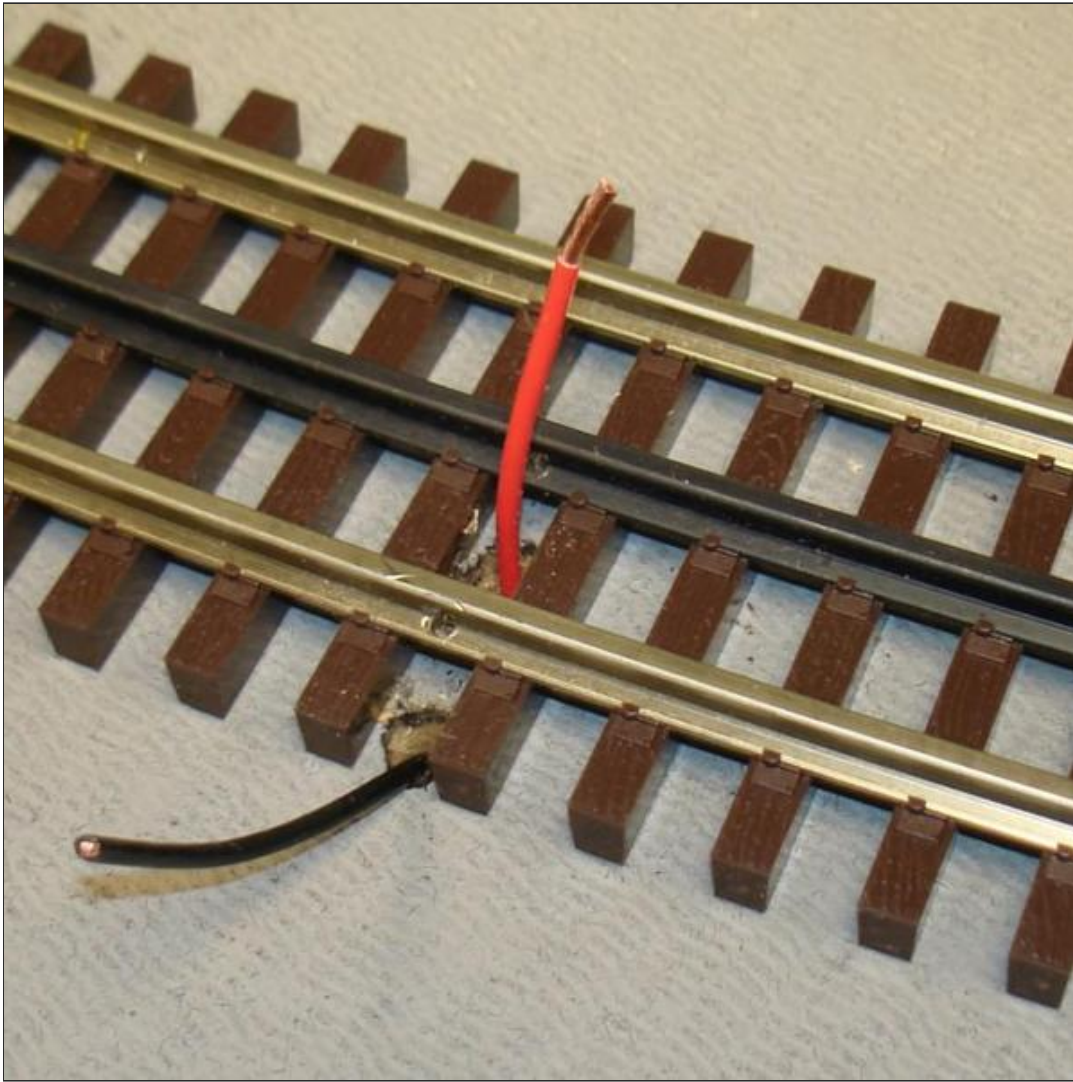


The Steps: **(Edited 14 Feb 2017 to add step descriptions)**

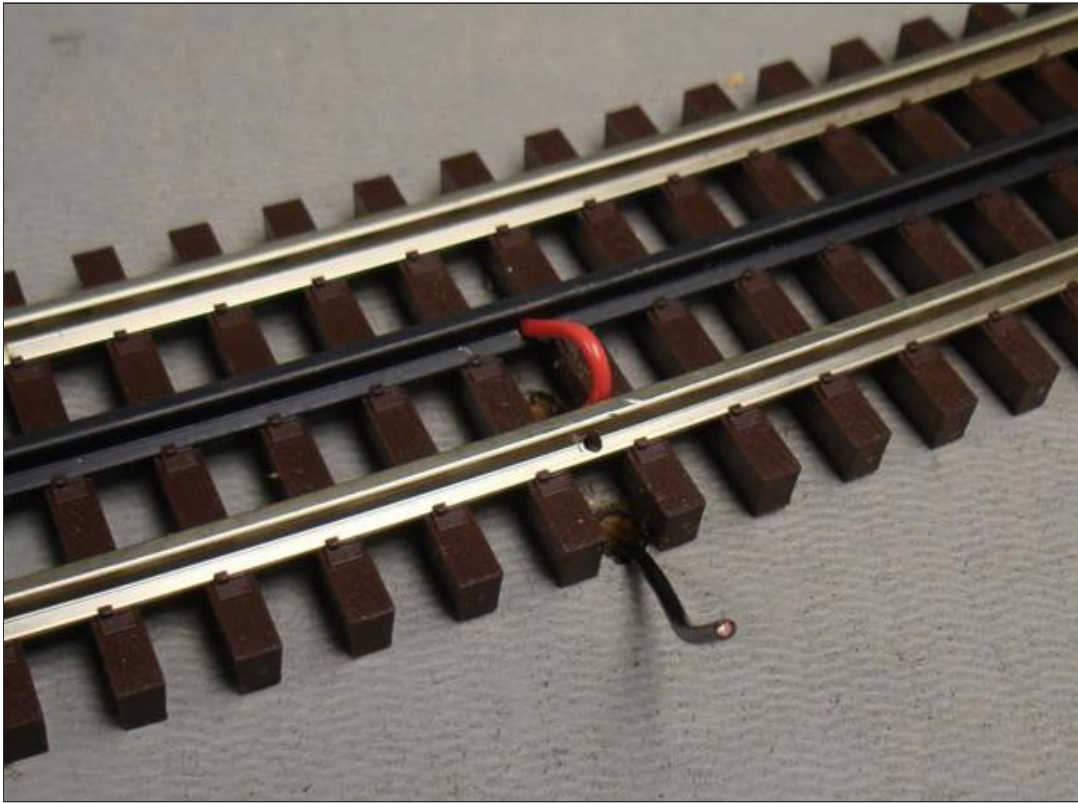
Drill the holes on the track and the layout surface



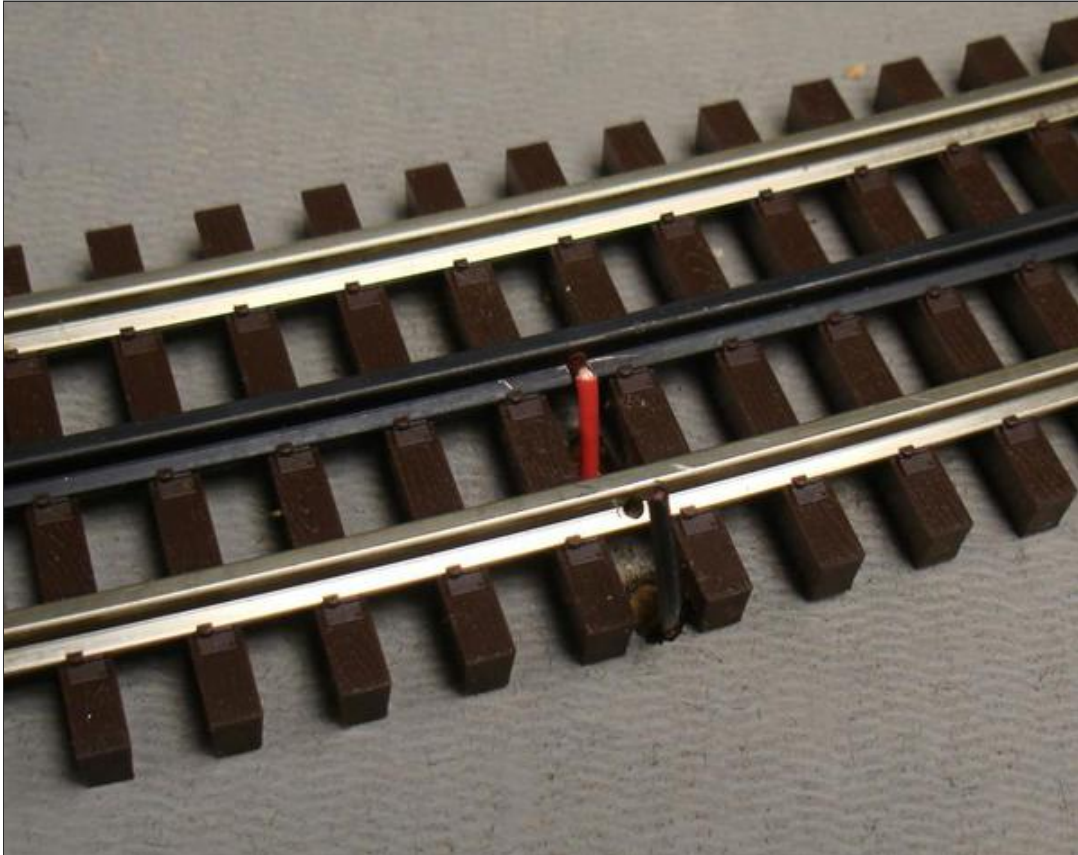
Insert the non-stripped wire through the layout surface hole and strip it. Easier to keep the strands together by stripping it at this point.



Insert the wire into the hole carefully to keep it from fraying.



At this point, I use a sharp punch and insert it in the hole with the wire to create a starting hole for the screw.



Add the screw and all done!



Good luck!

Alex

😊 Happy O-Gauge Railroading! 😊

Alexander Müller

See My Mostly Completed Layout [Here](#)

OGR Articles: Runs 256, 263, 267, 292

OGR forum member since 26 January 2008

 **Attachments**

Hide 

Photos (6)

