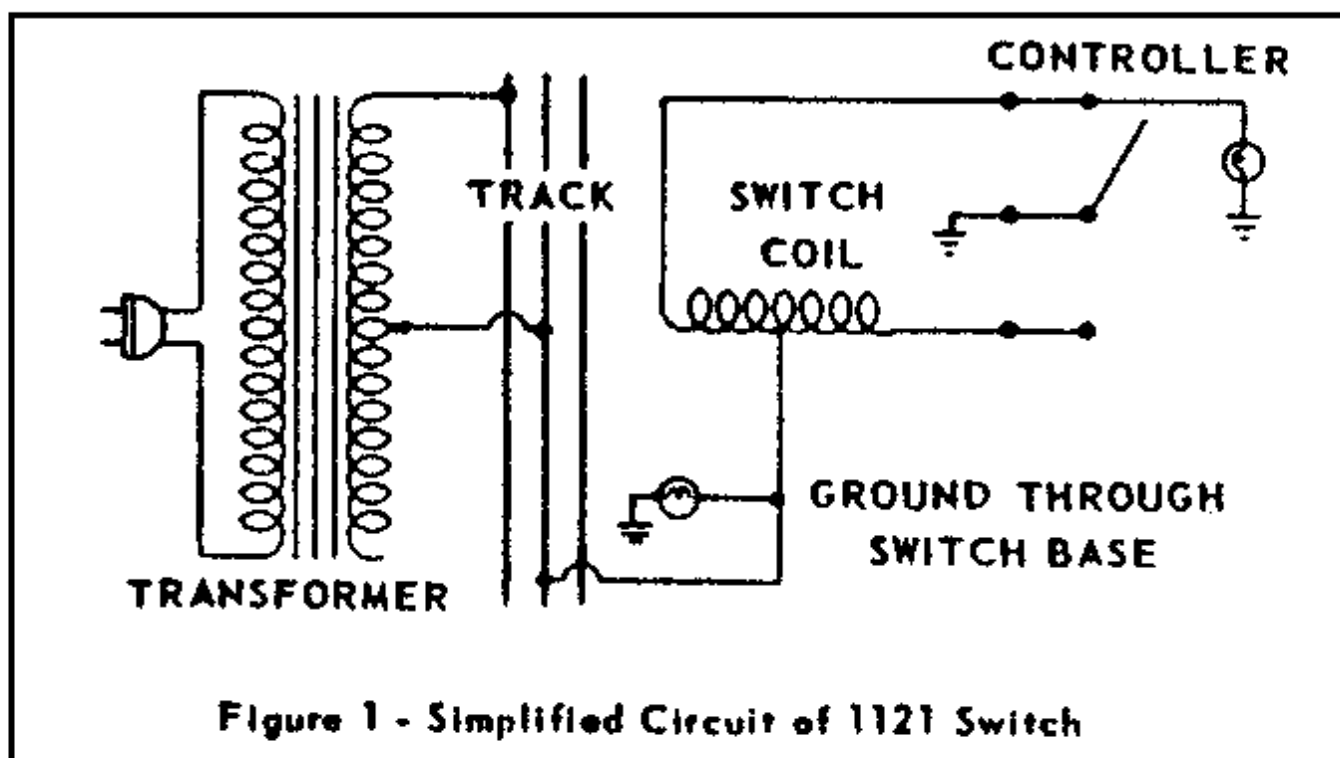


**AUTOMATIC OPERATION OF NO. 1121 SWITCHES**

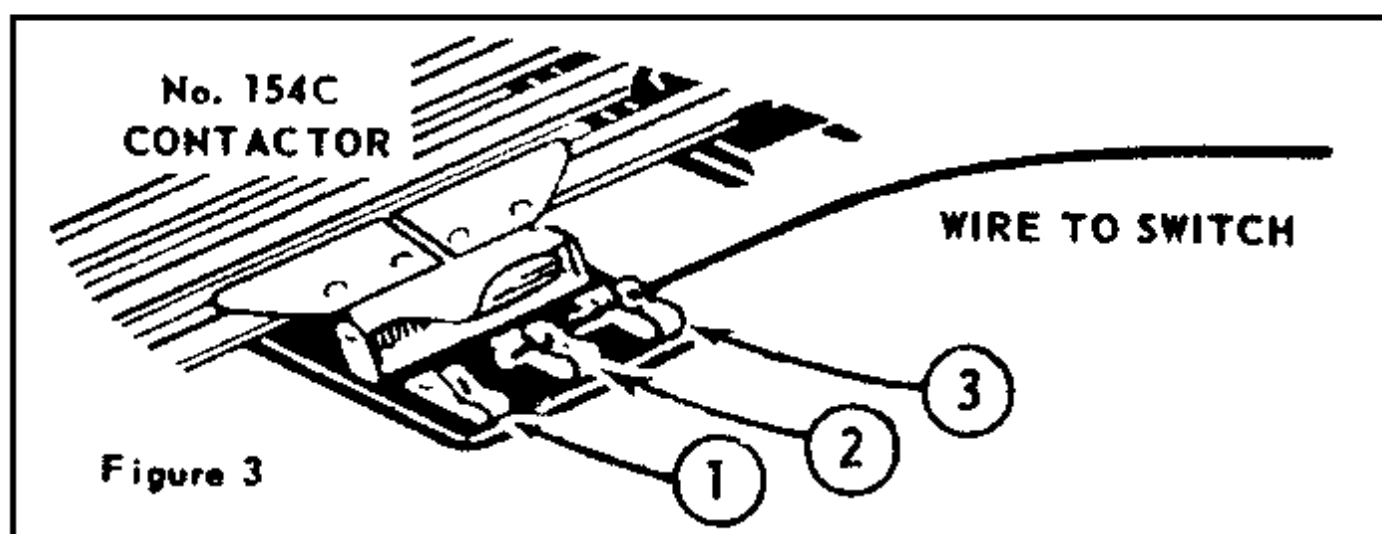
Although No. 1121 switches are not provided with automatically operating switching device to prevent a train from running into an open switch, such as is incorporated into 'O' Gauge No. 022 switches, a similar arrangement may easily be constructed in several ways.

The principle of this device is to provide some means for completing the circuit of the proper switch-operating coil before the locomotive enters the swivel rail of the switch. As shown in the simplified diagram in Figure 1, the circuit is completed simply by ground-



ing one of the outer terminals to the outer rails. This can be done most easily by installing two No. 1045C or No. 154C Contactors next to each switch and connecting them to the appropriate switch terminals as shown in Figure 2 below. When proper connections are made, the wheels of the locomotive approaching an open switch will automatically ground the correct coil and move the switch to the proper position for

the train to pass through. It will be obvious that pressure-type contactors such as 145C or 153C can also be used for this purpose by grounding one of the normally open terminals to an outside track rail and connecting the other to the proper switch post.



If 154C Contactor is Used Connect Clips 2 and 3 to Switch.

A neater, but more laborious method is to completely insulate one of the outside rails on the track sections adjacent to the switch and connecting that rail permanently to the proper switch terminal.

