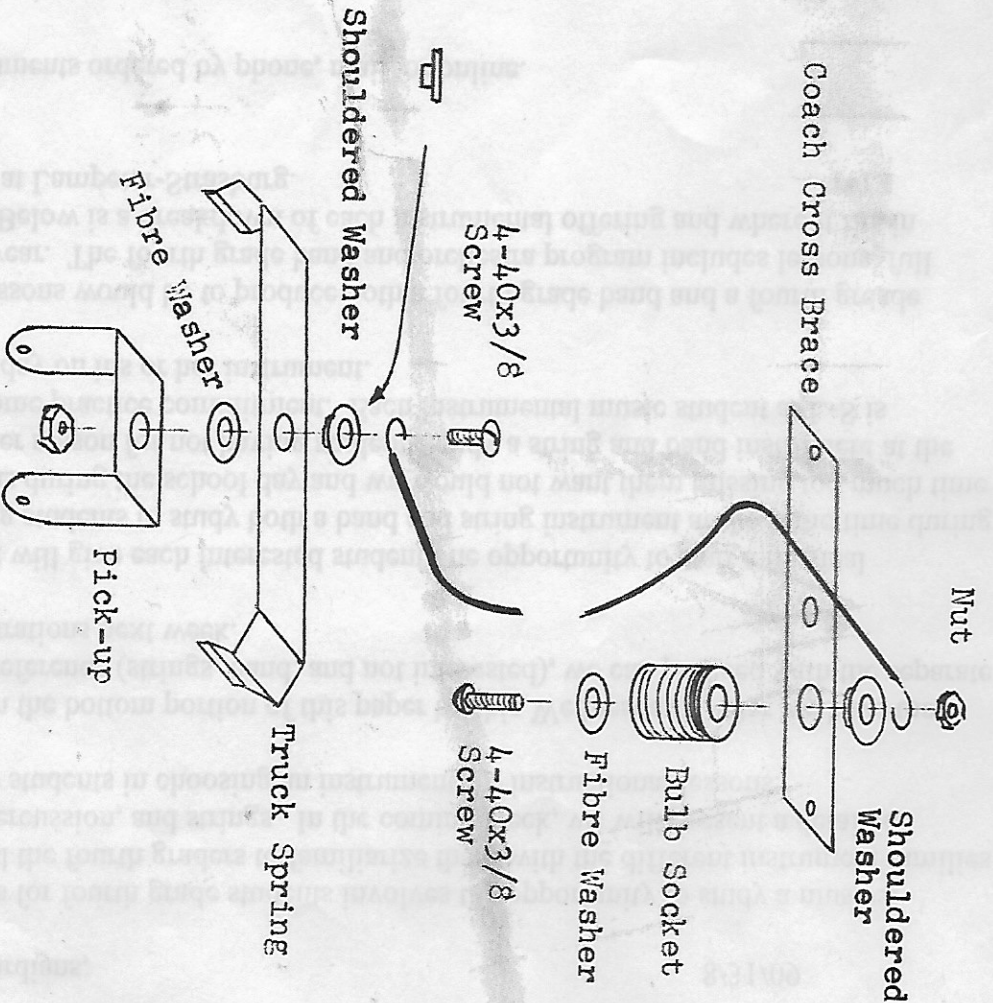


LIGHT KIT ASSEMBLY INSTRUCTIONS

1. Strip  $\frac{1}{4}$ " insulation from one end of wire. Assemble wire and Bulb Socket to Cross Brace as shown in the drawing. Note that brown fibre washer goes inside of Socket and white shouldered washer goes in Cross Brace. Screw must NOT touch Cross Brace. Attach Cross Brace to Car Body as shown in Drawing 6.
2. Insert wire through hole in Car Frame, stretch wire back to center of Truck Plus  $\frac{1}{2}$ ", cut wire, and strip  $\frac{1}{4}$ " from end. Place shouldered washer in Truck Spring and file or cut shoulder so that it is flush with underside of Spring. Attach wire and Pick-up to Spring as shown in the Drawing. Screw must NOT touch the Truck Spring.
3. Bend Truck Spring ends outward slightly to assure snug fit. Snap Springs into Trucks and insert Roller in Pick-up. Place a drop of oil on Roller bosses in Pick-up holes.



Please direct all inquiries to:

CLASSIC MODELS CORPORATION  
 7030 Longview Road  
 Columbia, Maryland 21044