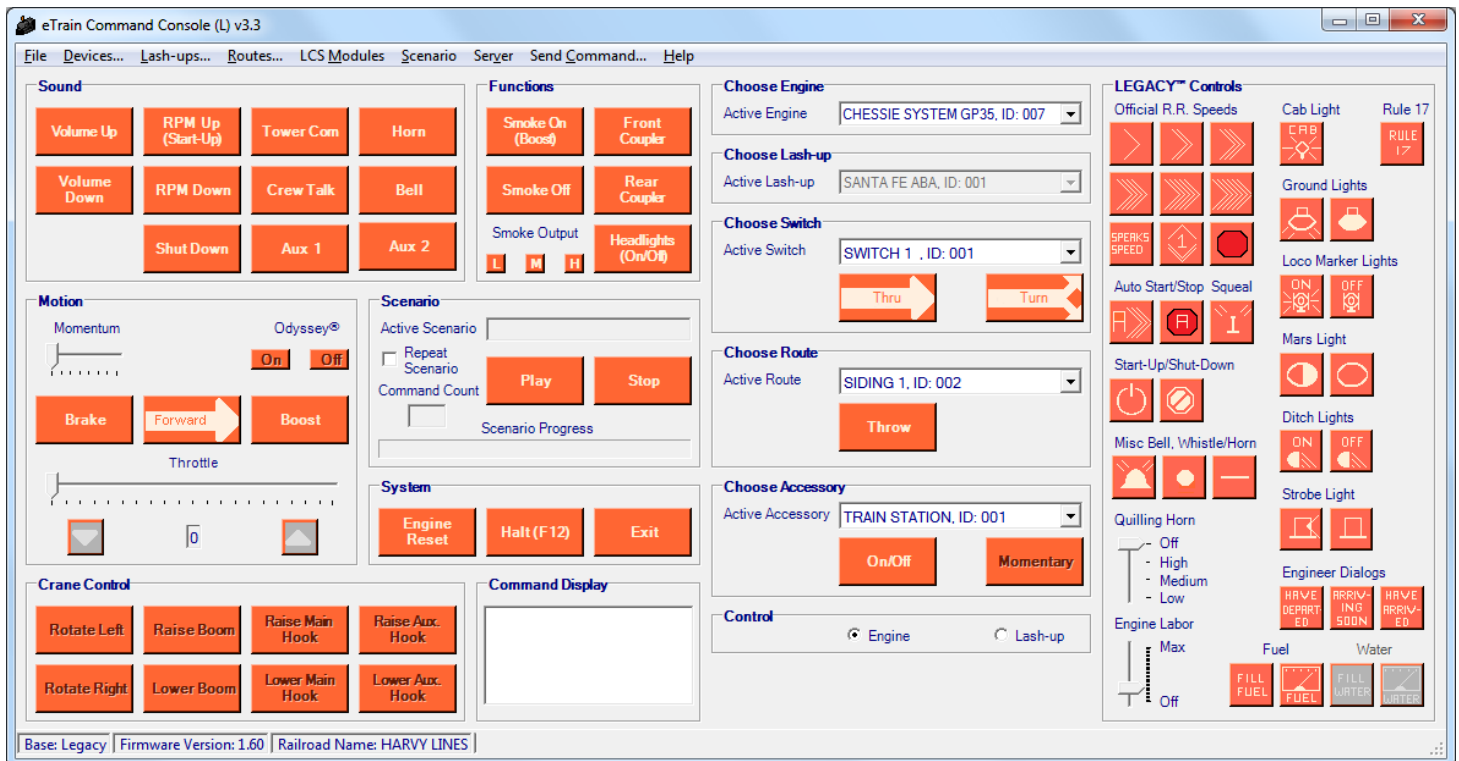


eTrain Command Console (L) v3.3

LIONEL LCS PARTNER

NOW WITH LEGACY BASE SYNC, LCS WI-FI, IR SENSOR TRACK, BPC2 & STM2 FUNCTIONALITY

eTrain Command Console (L) is a Windows application used in conjunction with your Lionel LEGACY & LCS Control Systems. With this application you will be able to control almost everything you do now with your CAB-2 Remote and more. TMCC and Android versions available.



Features:

- Add, Update & Delete your existing engines, accessories and switches to the eTrain Command Console (L) database
- Legacy Base Sync (WiFi connection required)
- Operate your command diesel and steam engines
- Operate your accessories and switches (SC-1/SC-2 Switch Controller required)
- Operate your StationSounds Diners
- Operate your Crane & Boom cars
- Operate your VISION Line Ethanol Tank cars
- Operate your Track Power Controllers (TPC300/400)
- Program and display all data received from your LCS IR SensorTracks (WiFi connection required)
- Operate your LCS Block Power Controller 2s (BPC2) (WiFi connection required)
- Use your LCS Switch Throw Monitor 2s (STM2) (WiFi connection required)
- Create and operate lash-ups by programming your engines with just a few mouse clicks
- Create and throw routes by programming your SC-1/SC-2 Switch Controller with just a few mouse clicks
- Record your own scenarios using CAB-1, CAB-1L, CAB-2, this application and the Android Companion App
- Technical support

System Requirements:

Windows XP, Windows Vista, Windows 7, Windows 8, Windows 10 - It may work on other versions of Windows, but has only been tested on the versions listed.

Microsoft .NET Framework - You must have installed on your computer Microsoft .NET Framework v4.0 or greater. You can go either to the Microsoft Update site or the main .NET site (<http://www.microsoft.com/net>) for a free download.

One of the following:

- **For TMCC operations:**
 - **Lionel TrainMaster Command Control (TMCC) System**
- **For LEGACY operations (option 1):**
 - **Lionel CAB-1L/Base-1L System**
 - **Lionel LCS SER2 or Wi-Fi Module**
 - **Lionel LCS DB-9 Cable with Power Supply**
- **For LEGACY operations (option 2):**
 - **Lionel LEGACY Control System**
 - **Lionel LCS SER2 or Wi-Fi Module**
 - **Lionel LCS DB-9 Cable with Power Supply**

Lionel TMCC SC-1/SC-2 Switch Controller (optional) – This is only required if you want to control your accessories and/or switches using this software.

Lionel TMCC TPC300/400 (optional) – This is only required if you want to control your TPC's using this software (special cable required).

Lionel LCS IR SensorTrack (optional) – If you want to be able to display the data returned from your engines as they pass over your IR SensorTracks with this software, you must either use a second serial connection or have the LCS WiFi Module (see below).

Lionel LCS BPC2 (optional) – This is only required if you want to control your track blocks using this software.

Lionel LCS STM2 (optional) – This is only required if you want to view your switches' position using this software.

Lionel LCS WiFi Module (optional) – This is only required if you want to use a WiFi connection from your computer. It will also allow you to use Layout Control System (LCS) commands. LCS commands are sent directly to various LCS modules. These commands are different from TMCC and Legacy commands.

Available DB9 or USB port – In order for eTrain Command Console (L) to communicate with your LCS SER2 and then to your LEGACY base or Base-1L, you must have either an available Serial port using a Male to Female DB9 Serial cable or an available USB port using a USB to DB9 Serial adapter.

Serial cable or USB to DB9 Serial adapter (sold separately) – Used to connect your computer to your LCS SER2. If you use a Serial cable you must use a Male to Female DB9 Serial cable. Do not use a "null-modem" or "crossover" Serial cable.

Pricing:

eTrain Command Console (L) (Legacy Windows version).....	\$34.95
eTrain Command Console (TMCC Windows version).....	\$24.95
eTrain Command Mobile (Android version, one Windows version required).....	\$3.99

Contact Us:

Email Harvy at etccsupport@comcast.net