

WWW.RIGHTONTRACKMODELS.COM

MIAMI FLORIDA

305 240 8362

RICHARD@RIGHTONTRACKMODELS.COM

KIT #1

MARCH 2017

O SCALE

TANNER TOOL AND DIE



MIAMI FLORIDA

305 240 8362

RICHARD@RIGHTONTRACKMODELS.COM

Thank you for purchasing our kit! We worked long and hard to produce a quality product and highly detailed easy to follow assembly instructions, that when completed will enhance any layout. We hope you enjoy building it as much as we had designing it.

Begin by identifying all parts and read though the instructions. If you plan on brush painting we recommend that you paint both sides to reduce warping. We have included extra wood sticks to add additional strength to your structure.

We personally like to "pre-distress" the wall sections using a fine brass wire brush and medium sandpaper. Lightly sanding in one direction with following the direction of the engraved boards then using the wire brush the clean dust from engraved lines will give you a great wood grain finish when painted and weathered.

TOOLS RECOMMENDED:

SHARP HOBBY KNIFE WITH NO. 11 BLADE

Diagonal flush cutters for trimming fine wood trim and removing plastic parts from sprues

Tweezers

Square (optional, you may also use laser cut parts or scrap as a square)

Clamps

Pencil

220 grit sand paper

100 grit sand paper

X Acto razor saw (No. 235 or equivalent)

Ruler

GLUES:

Wood, plastic, white metal and paper. For fast adhesion.

CA Cement aka super glue. We prefer Hobbybond Thick. Loctite Super Glue is a good alternative. Do not use on clear plastics.

Wood, paper. Slow adhesion.

Elmers Wood Glue

Wood to paper. Fast adhesion. (roof shingles , roofing paper ect.)

3M General Purpose 45 spray glue. Spray one surface for easy removal; spray both surfaces for permanent adhesion.

Wood, paper, plastic. Fast temporary adhesion.

Elmers Washable glue stick. Use to dry fit parts, wipes off with damp paper towel.

Clear Plastic and Styrene

GS Hypo Cement AKA watch crystal glue. WILL NOT HARM CLEAR PLASTIC AND STYRENE.

PAINTING:

Primers: We like Ace Hardware gray primer.

Finishing Colors: Both Floquil and Polly S brand paints are top of the list for brush on or air brush application. We have found that we can get excellent results from spray paints. Satins and flats work the best. Kyrton and Ace Hardware paints are at the top of the list. Kyrton makes paint for plastic and dries in less than 10 mins. When using spray can colors for the final color we do not use a primer. No primer coat is necessary if using an airbrush either. Unless you want to do the wire brush peeling paint effect described later in the instructions

WEATHERING YOUR STRUCTURE:

We prefer to wait until the structure is assembled before applying weathering. We like to use pastel chalks, India Ink/Alcohol or light wash of some sort of grimy color. I use darker colors to weather light colored objects and lighter colors for weathering dark objects.

WOOD WARP AND WOOD BREAKAGE

If you saturate the wood with paint or stain from a brush, it will warp. Sometimes the wood warps when you are careful too. Don't panic and be patient. If the wood warps, let the paint or stain dry for a few hours, then cover the parts with wax paper and press with a heavy object for about 24 hours. The parts should be much straighter after doing this.

It is common to have a little warp in the larger wall pieces until they are assembled. The walls will straighten as you are building the kit. Gluing the walls to one another and adding bracing helps in straightening the walls. Hence the supplied wood sticks used for bracing and support.

If you break a part, chances are very good that you may glue it back together, allow it to dry and proceed with assembly. If you damage a part so bad that it cannot be glued together, we will replace it. Please contact us with kit number and part number.

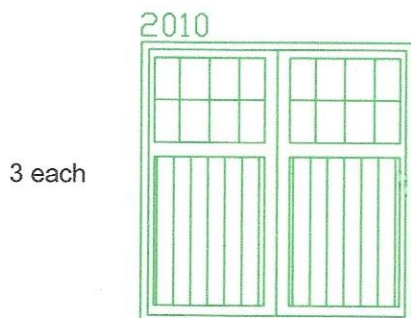
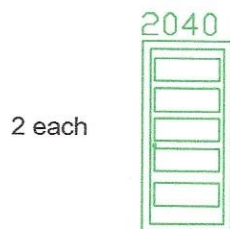
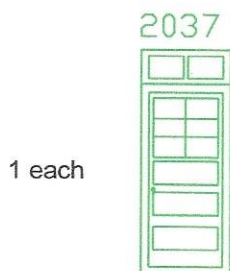
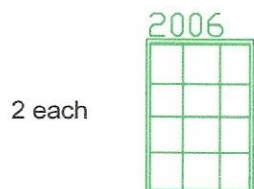
TANNER TOOL AND DIE Window and door LIST

NOT TO SCALE

PAGE 2

0 SCALE

All windows and doors provided with this kit are manufactured in styrene by Tichy Train Group. We recomend to follow the manufactures instructions listed below. Installation of windows and doors are one of the later steps in the construction of this model.



Glazing Instructions

1. paint door or window first.
2. Wash the clear pieces with soap and water or windex. Dry Well
3. Cut out individual glazing pieces make sure gate tab is trimmed flush with the edges and glue it to the back inside guide ridge with sytrene cement.
4. If shades are desired glue in place.

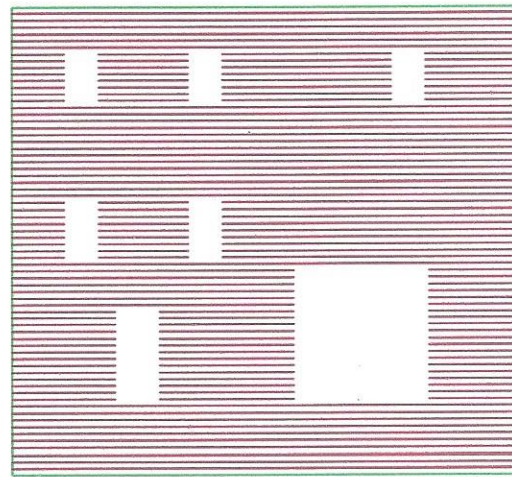
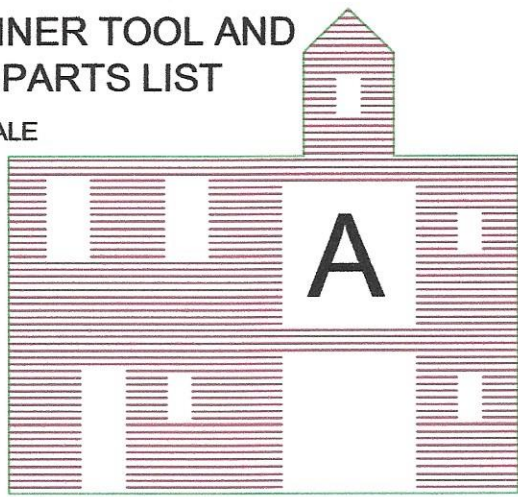
Painting Tip

Painting the windows and doors with gray spray can primer and let dry. Use very fine brass wire brush and brush them in one direction to get slight woodgrain texture. Then paint your chosen color on top of primer. Allow to dry. To get the weathered peeling paint effect, use medium brass wire brush and lightly brush to remove top color and expose the gray primer.

TANNER TOOL AND DIE PARTS LIST

0 SCALE

NOT TO SCALE

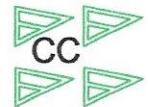
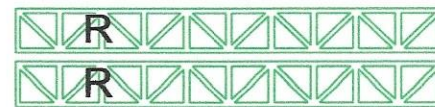
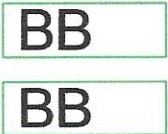
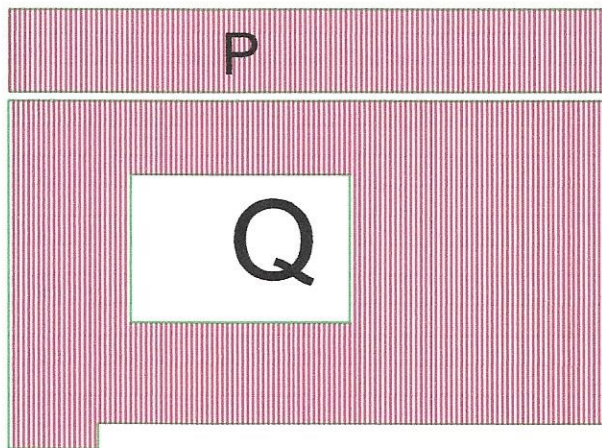
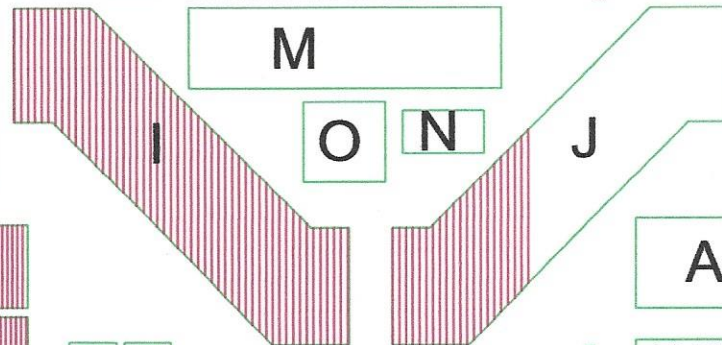
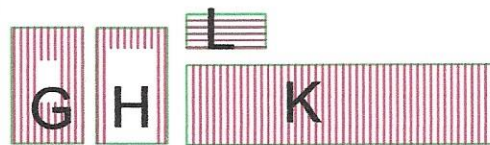
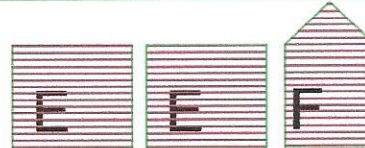
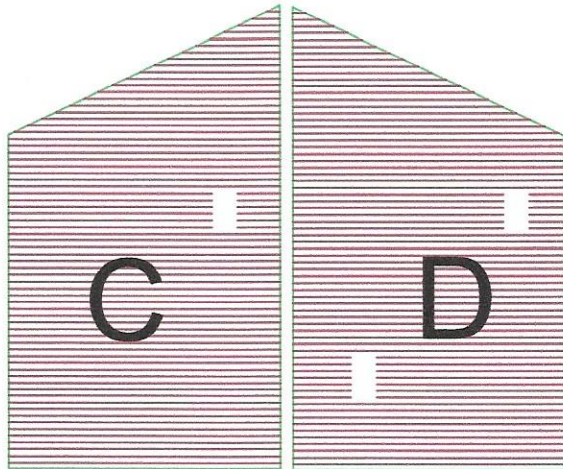


$\frac{3}{16} \times \frac{1}{32}$
WOOD STRIP

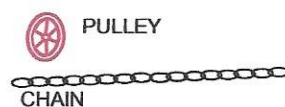
XX

$\frac{3}{16} \times \frac{3}{16}$
WOOD STICK

ZZ



* Recommend that styrene be pre-painted with at least the base color you choose such as black or silver. Weathering can be done later. This will save you having to mask the building.



BLOCK & TACKLE



T Stove Pipe

TANNER TOOL AND DIE

KIT #1
MARCH 2017

PARTS NEEDED FOR THIS PAGE

QTY	PART#	QTY	PART#
1	WALL A		
1	WALL B		
1	WALL C		
1	WALL D		
6	STICK ZZ		

PAGE 4

STEP 3 & 4

O SCALE

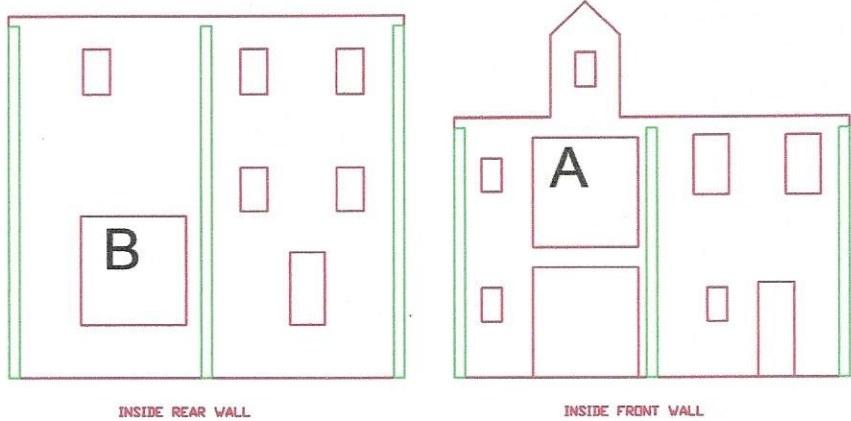
NOT TO SCALE

FIG. 1

STEP 3

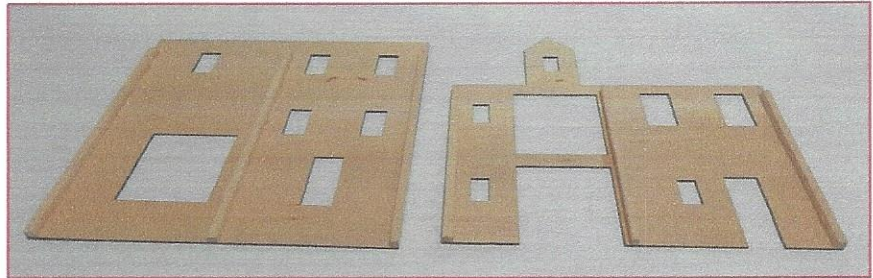
Use supplied $\frac{3}{16} \times \frac{3}{16}$ ZZ strip wood to strengthen wall panels. See Fig 1. Cut to length and glue pieces as shown to back side of wall A & B.

Leave up to $\frac{1}{2}$ " clearance from top of wall to top of support to allow the roof panel to sit flush in later steps. See Pic 1



INSIDE REAR WALL

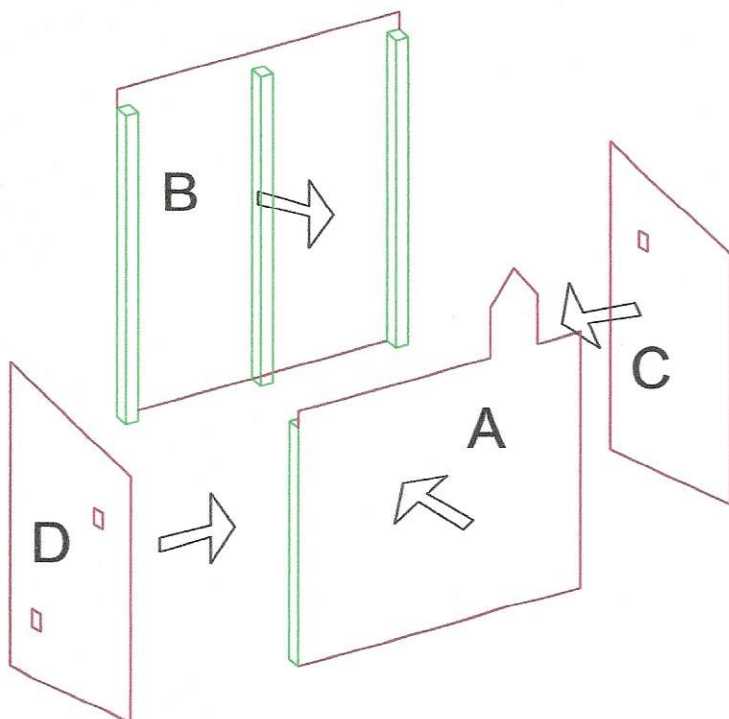
INSIDE FRONT WALL



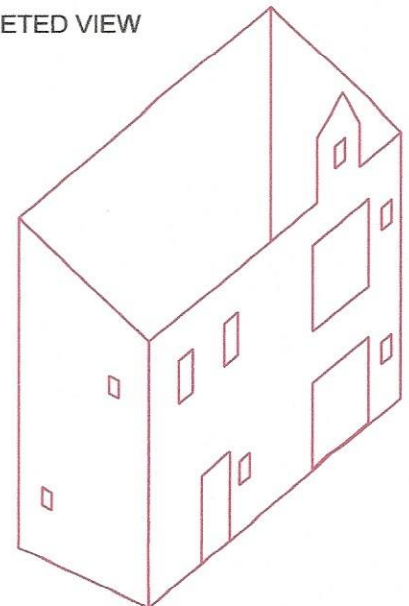
PIC. 1

STEP 4

Attach 4 main walls as shown using glue and clamps making sure all walls at at 90 degree angles.



COMPLETED VIEW



TANNER TOOL AND DIE

KIT #
MARCH 2017

PARTS NEEDED FOR THIS PAGE			
QTY	PART#	QTY	PART#
2	WALL E		
1	WALL F		
1	STICK ZZ		

STEP 5 & 6

O SCALE

NOT TO SCALE

STEP 5

Use supplied $\frac{3}{16} \times \frac{3}{16}$ ZZ strip wood to strengthen wall panels. See Fig 2. Cut to length and glue pieces as shown. PIC. 2

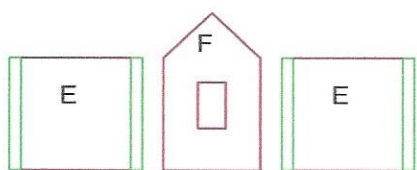
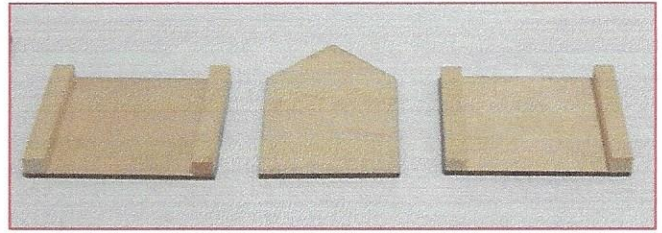


FIG. 2



PIC. 2

STEP 6

Glue side walls E to back wall F. See Fig 3. Then glue to main structure as shown in Fig. 4 & PIC 3

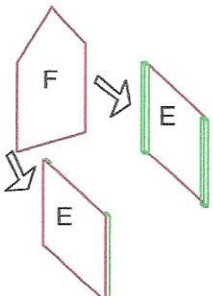


FIG. 3

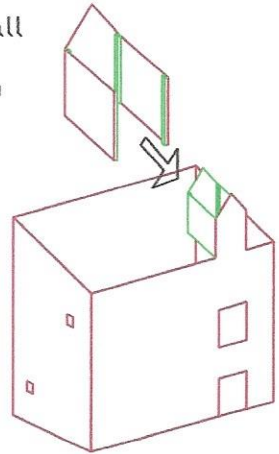
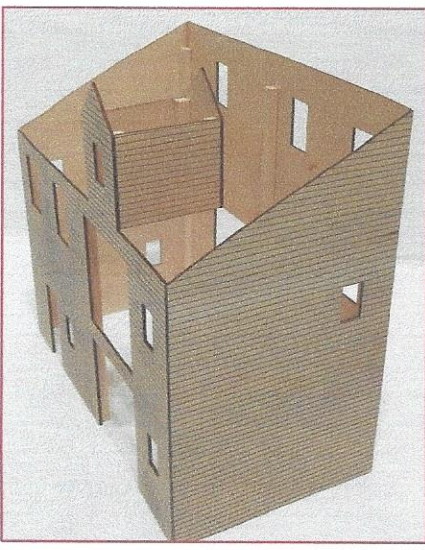
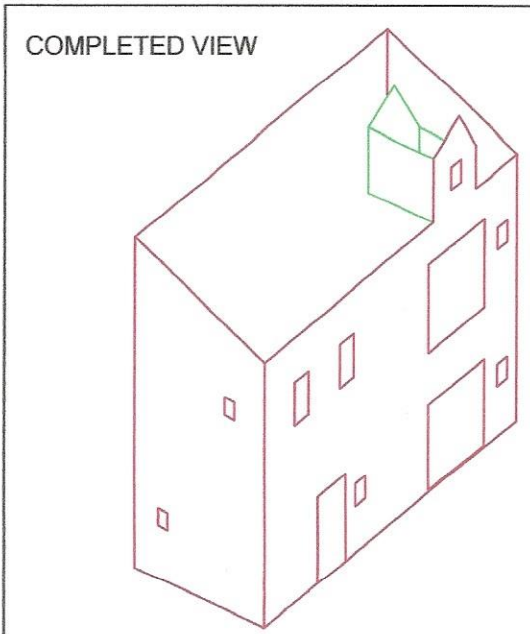


FIG. 4



PIC. 3



TANNER TOOL AND DIE

KIT #
MARCH 2017

PARTS NEEDED FOR THIS PAGE

QTY	PART#	QTY	PART#
1	WALL G		
1	WALL H		
1	WALL I		
1	WALL J		
4	STICK ZZ		

PAGE 6

STEP 7 & 8

O SCALE

NOT TO SCALE

STEP 7

Use supplied $\frac{3}{16} \times \frac{3}{16}$ ZZ strip wood to strengthen wall panels. See Fig 5. Cut to length and glue pieces as shown to back side of walls I-G-H-J. See PIC. 4

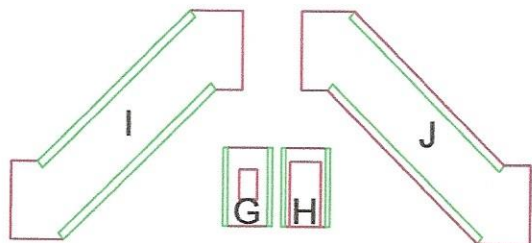
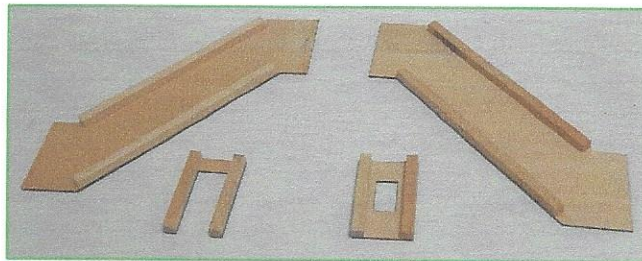


FIG. 5



PIC. 4

STEP 8

Glue side walls together as shown in Fig. 6 and Pic 5 & 6

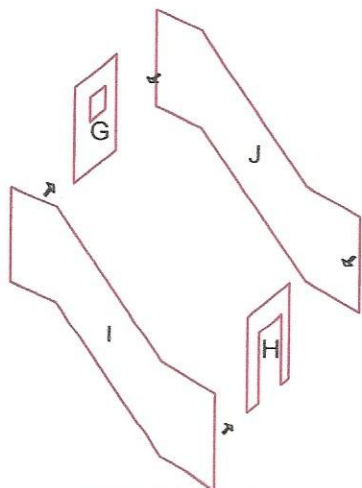
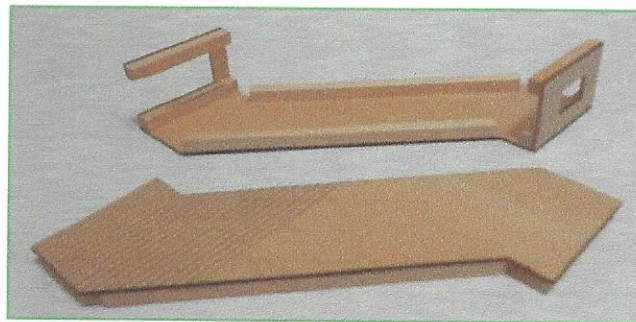
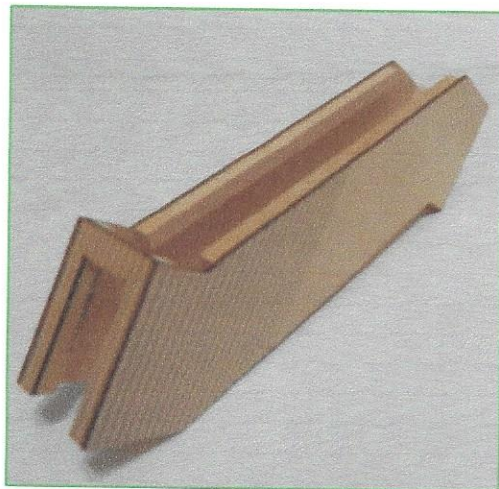


FIG. 6

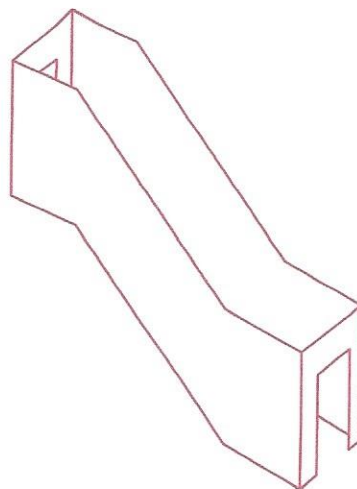


PIC. 5

PIC. 6



COMPLETED VIEW



TANNER TOOL AND DIE

KIT #
MARCH 2017

PARTS NEEDED FOR THIS PAGE

QTY	PART#	QTY	PART#

STEP 9

O SCALE

NOT TO SCALE

STEP 9

Fasten Stairwell to main structure with glue. Align top rear of stairwell to be flush with rear of building and the bottom of the stairwell flush to bottom of building. See Fig. 8 and Pic. 7 & 8

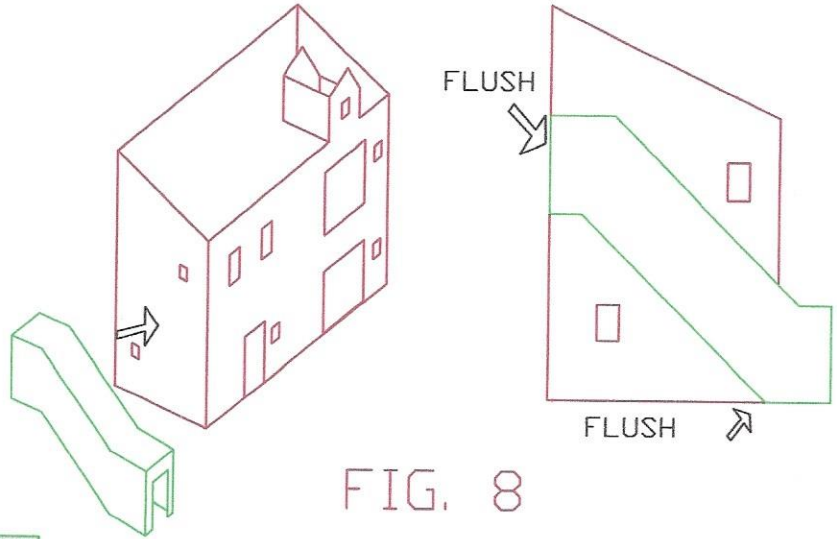
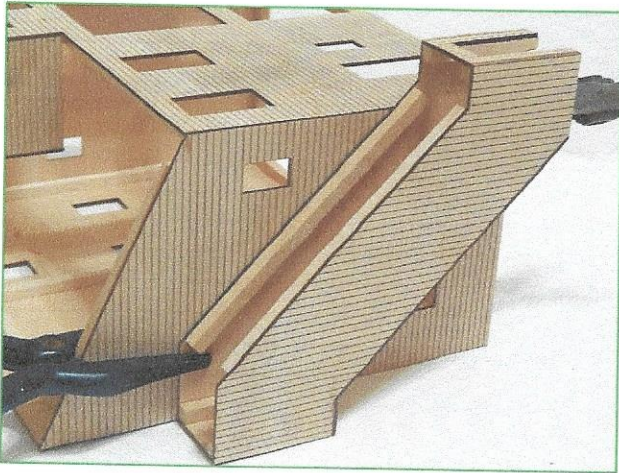


FIG. 8

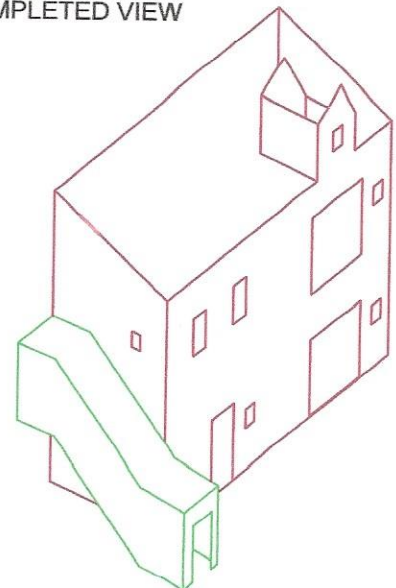


PIC. 7



PIC. 8

COMPLETED VIEW



PARTS NEEDED FOR THIS PAGE			
QTY	PART#	QTY	PART#
1	FLOOR L		
1	FLOOR K		
1	ROOF M		
1	ROOF N		
1	ROOF O		
1	ROOF PAPER FF		

STEP 10

O SCALE

NOT TO SCALE

STEP 10

Dry fit roof sections M-N-O to stairwell. Use 220 grit sandpaper or fine file to sand edges to fit angles of stairwell. Repeat for floor sections L-K. When comfortable with fit then glue all pieces in place as shown in Fig. 9 and Pic. 9 Measure and cut styrene sheet DD to fit over stairwell roof. Using straight edge bend piece to fit angles of roof line. * Recommend styrene be painted prior to gluing. See Fig. 9

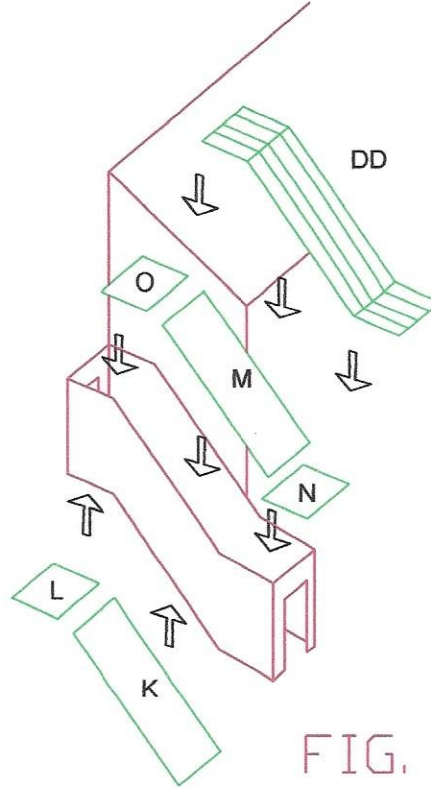
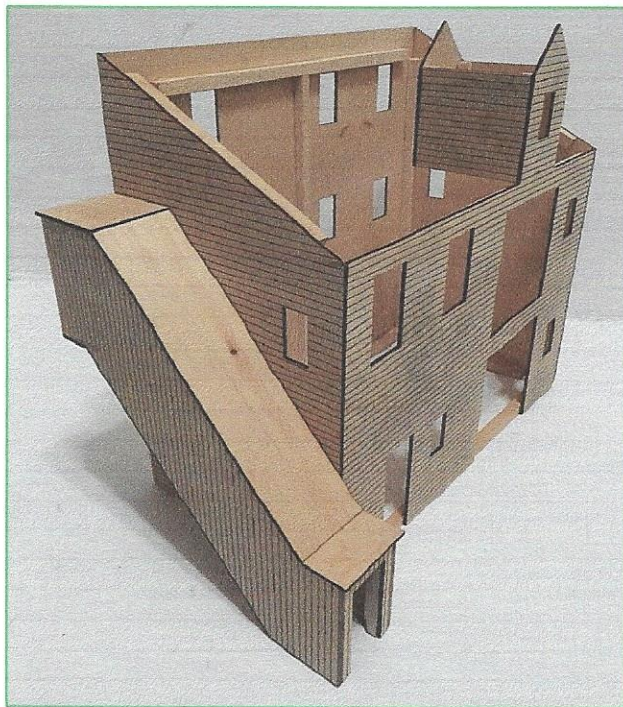
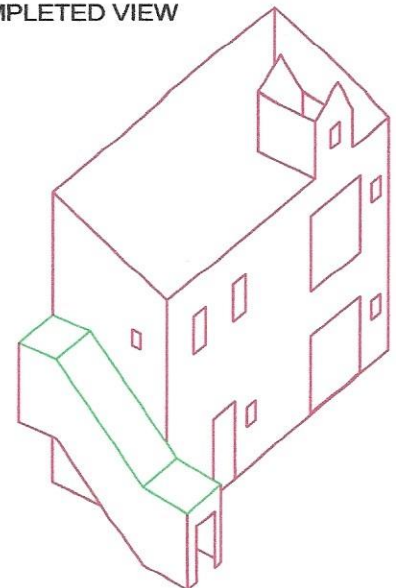


FIG. 9



PIC. 9

COMPLETED VIEW



QTY	PART#	QTY	PART#
8	Strip XX		

STEP 11

O SCALE

NOT TO SCALE

STEP 11

Use XX strips to hide glue joints and add details to the structure with trim. See recommendations for trim locations in Fig. 10 & 11. Use the main roof Z as a guide for your trim to fit correctly (DO NOT GLUE). See Pic. 10 Add small amounts of glue to the back of the trim and applie over corners. Cut pieces slightly longer than needed and use flush cutters to trim after glue has set. This allows for perfect fitting angles. See Pic. 11 This is the perfect time to paint the structure prior to next steps.

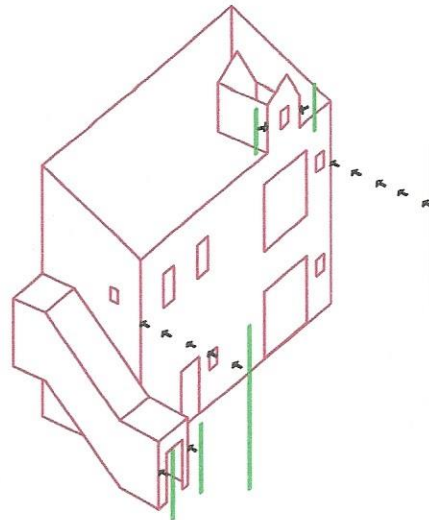


FIG. 10

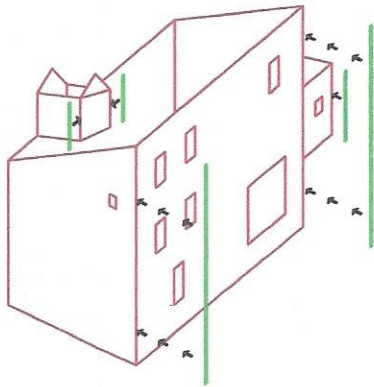
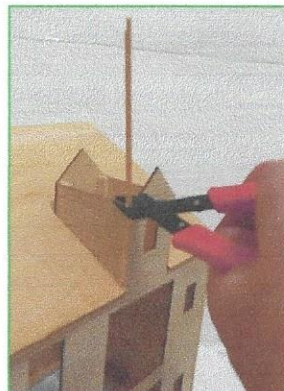


FIG. 11

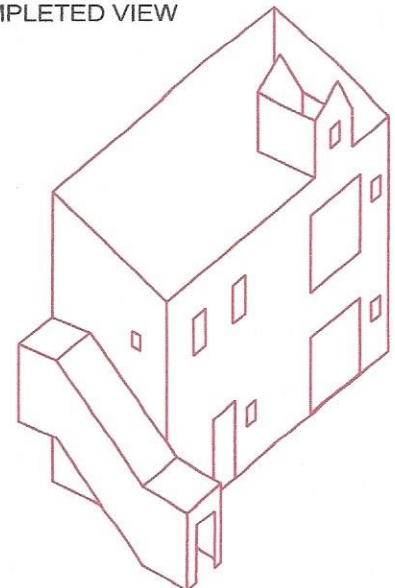


PIC. 10



PIC. 11

COMPLETED VIEW



TANNER TOOL AND DIE

KIT #
MARCH 2017

PARTS NEEDED FOR THIS PAGE

QTY	PART#	QTY	PART#
1	Roof W		
1	Roof X		
6	SUPPORT T		

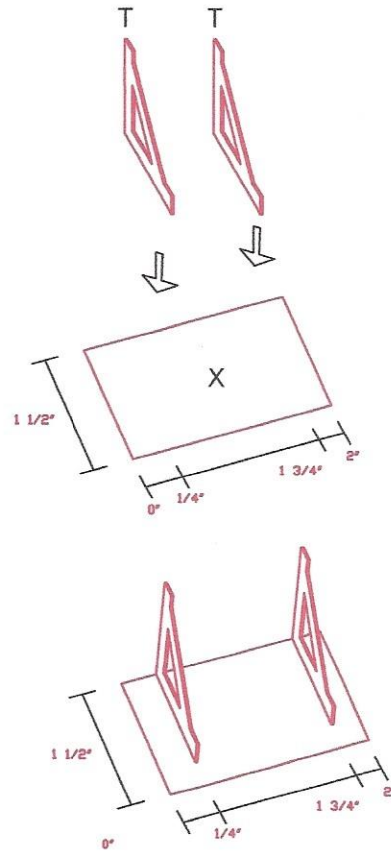
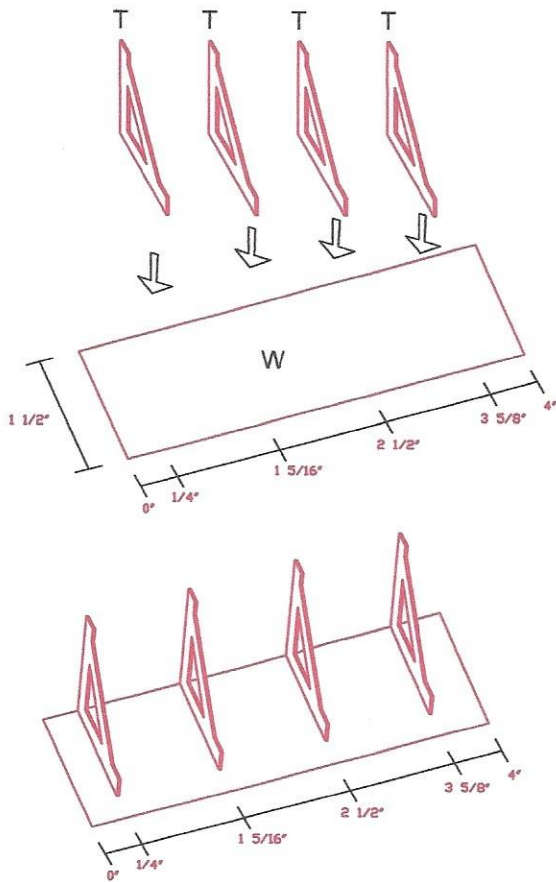
STEP 12

O SCALE

NOT TO SCALE

STEP 12

Mark with pencil the dimensions on roof W as shown in Fig. 12 Glue supports T as shown, Repeat for roof X.



COMPLETED VIEW

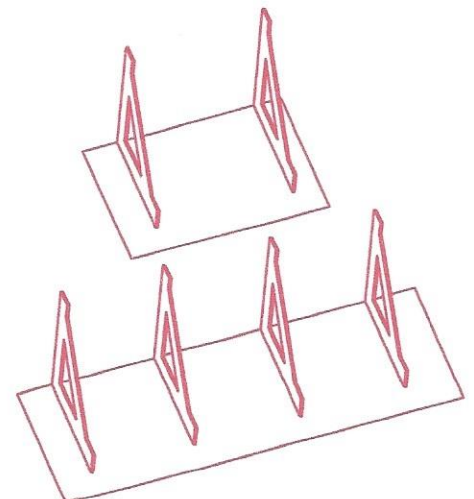


FIG. 12

TANNER TOOL AND DIE

KIT #
MARCH 2017

PARTS NEEDED FOR THIS PAGE

QTY	PART#	QTY	PART#
1	ROOF PAPER GG		
1	ROOF PAPER HH		

PAGE 11

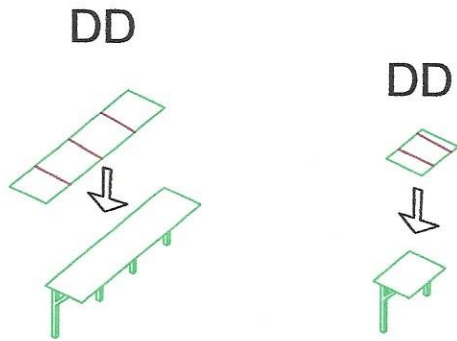
STEP 13 & 14

O SCALE

NOT TO SCALE

STEP 13

Measure and cut DD styrene to fit roof assemblies from previous step. * Recommend styrene be painted prior to gluing.



STEP 14

Glue larger roof assembly from previous step to front of structure $\frac{1}{8}$ " above and as center as possible over small door opening, repeat for smaller roof assembly on rear of structure. See Fig. 13 & 14

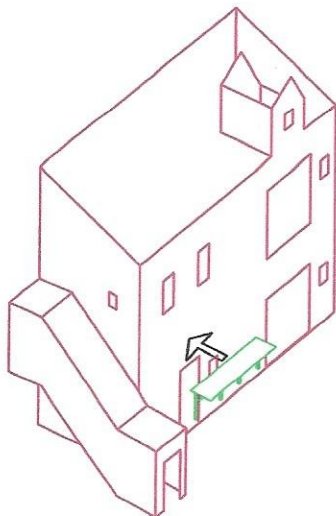


FIG. 13

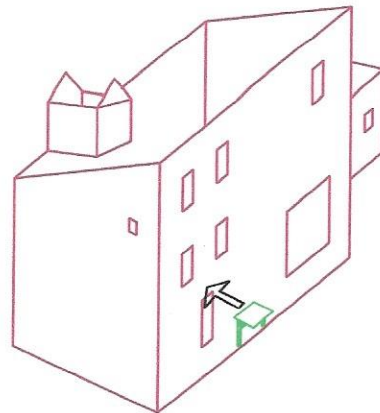
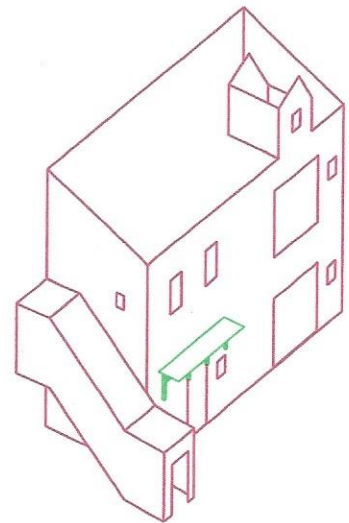
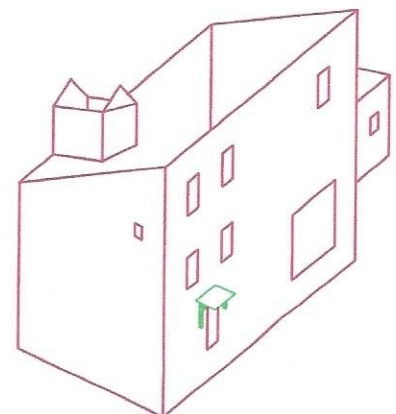


FIG. 14

COMPLETED VIEW



COMPLETED VIEW



TANNER TOOL AND DIE

KIT #
MARCH 2017

PARTS NEEDED FOR THIS PAGE

QTY	PART#	QTY	PART#
1	FLOOR Q		
4	STICK ZZ		

PAGE 12

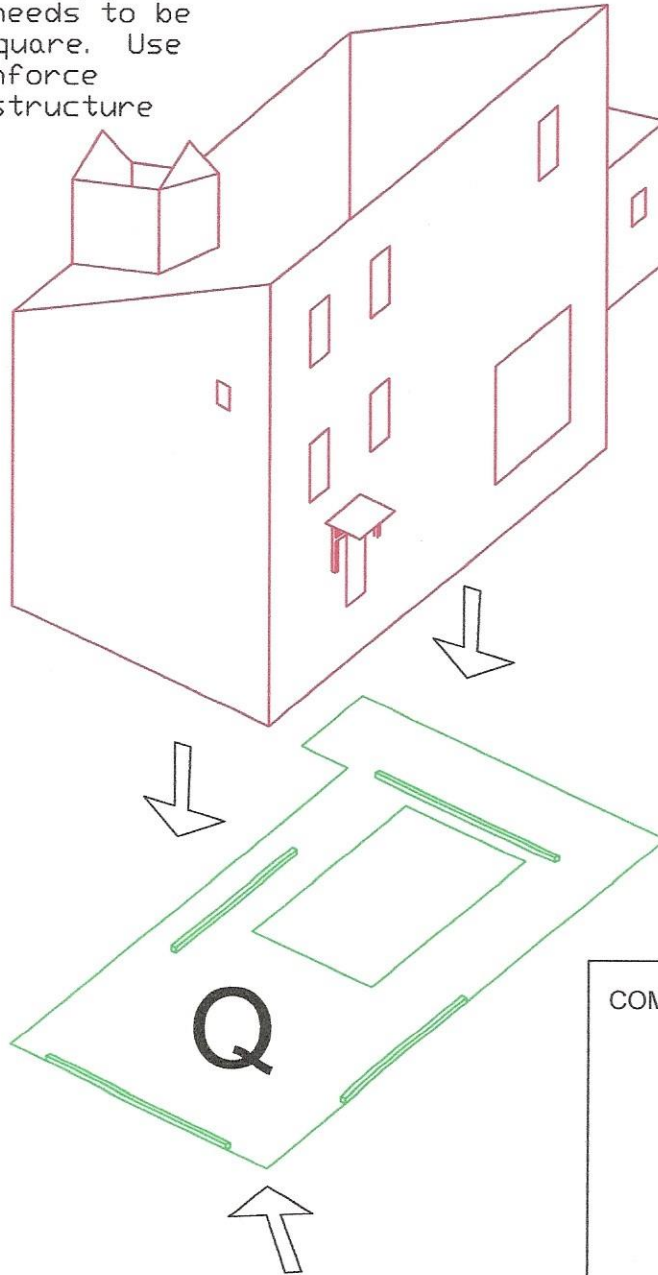
STEP 15

O SCALE

NOT TO SCALE

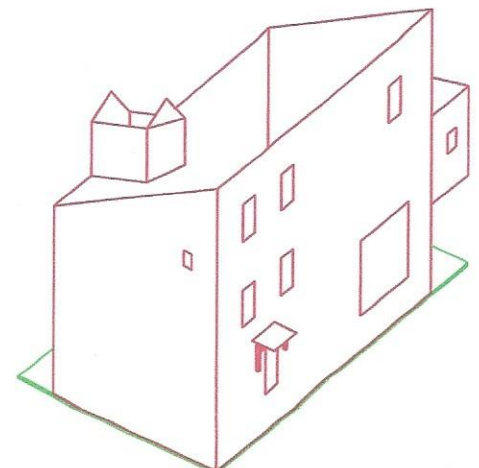
STEP 15

Glue Floor Q to main structure as shown in Fig. 15 * Important that right rear needs to be mounted flush and square. Use scraps of ZZ to reinforce connection between structure and base.



Flush and Square to this corner

COMPLETED VIEW



TANNER TOOL AND DIE

KIT #
MARCH 2017

PARTS NEEDED FOR THIS PAGE

QTY	PART#	QTY	PART#
2	Stair Stringer U		
5	Stair V		
2	Dock Supports R		
4	Dock Supports S		
1	Dock Floor P		

STEP 16 & 17 & 18

O SCALE

NOT TO SCALE

STEP 16

Assemble stairs with stringers U and steps V. See Fig. 16.

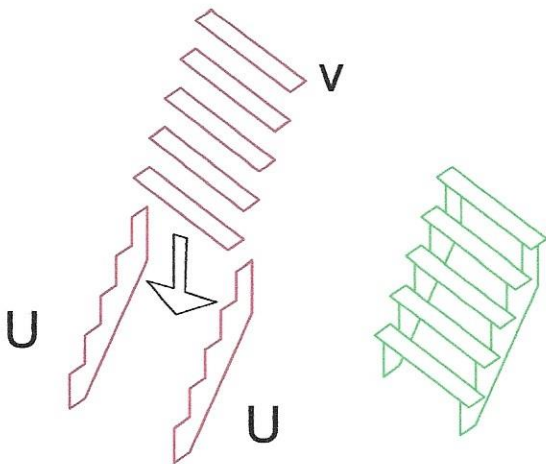


FIG. 16

STEP 17

Fit dock supports R back to back and glue as shown in Fig. 17 Repeat for supports S See Pic. 12

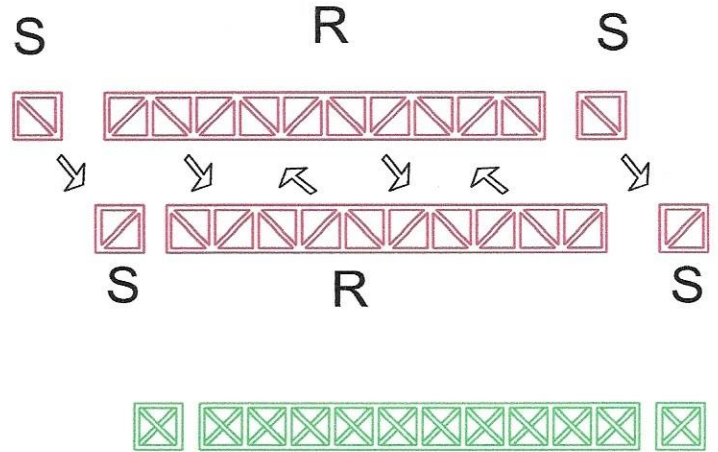
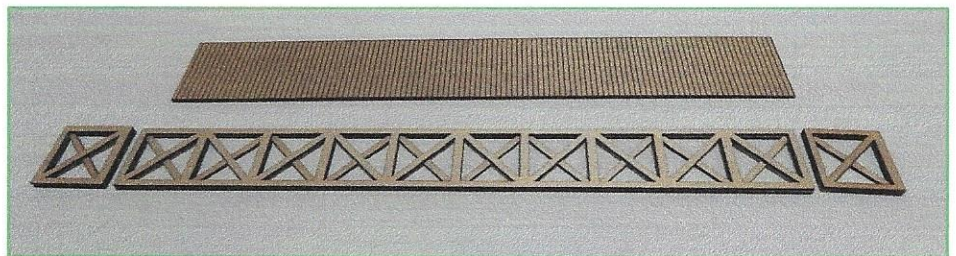


FIG. 17



PIC.12

STEP 18

Glue dock supports assemblies together as shown in Fig. 18 Then glue dock floor P. See Pic. 13

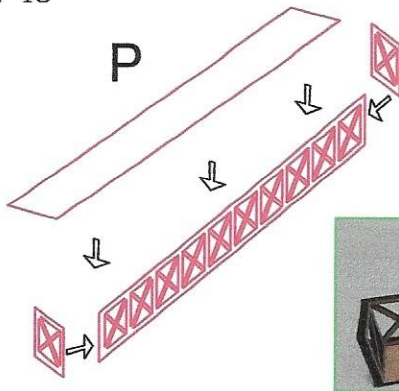
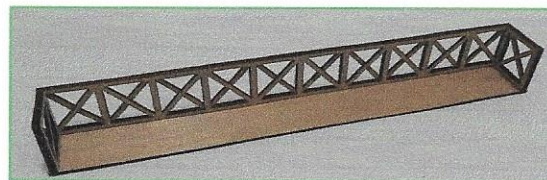
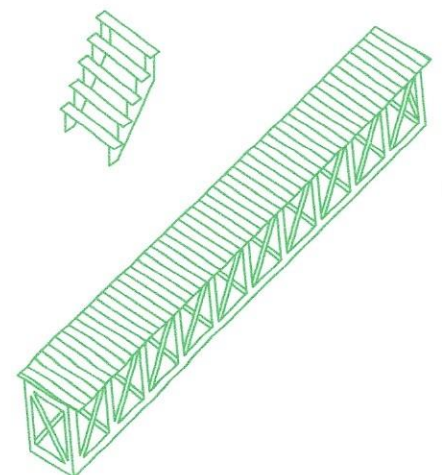


FIG. 18



PIC. 13

COMPLETED VIEW



TANNER TOOL AND DIE

KIT #
MARCH 2017

PARTS NEEDED FOR THIS PAGE

QTY	PART#	QTY	PART#

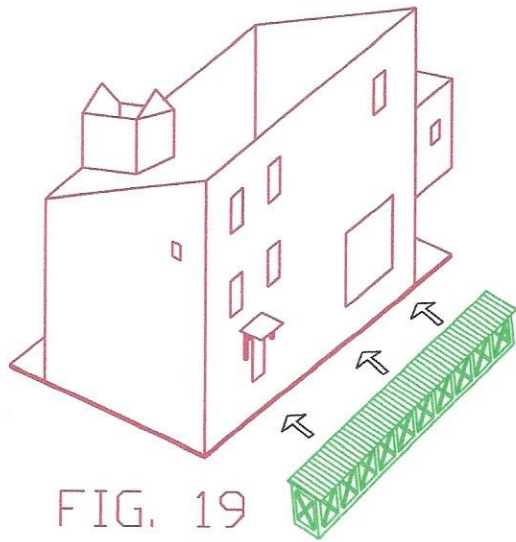
STEP 19 & 20

O SCALE

NOT TO SCALE

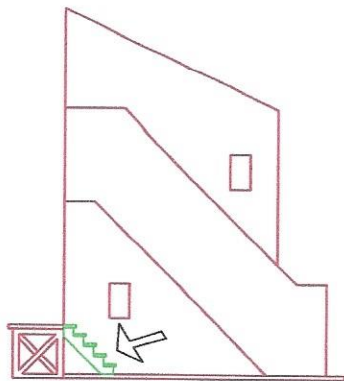
STEP 19

Glue loading dock to rear of structure, line up dock with structure floor. use scrap sticks for reinforcement under the dock. See Fig. 19

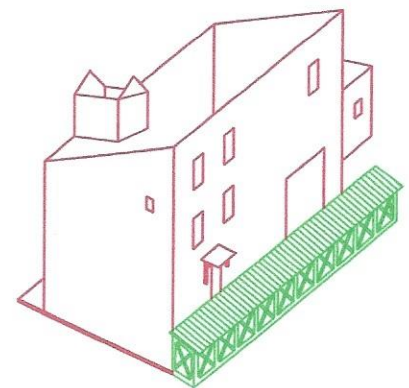


STEP 20

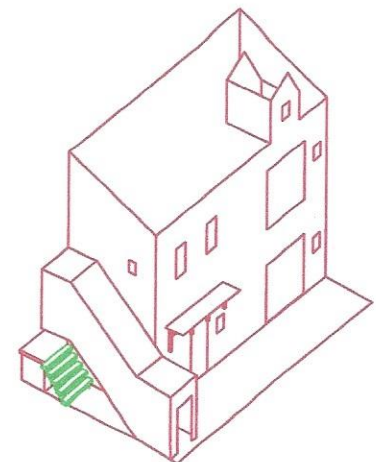
Glue stairs to loading dock as shown Fig 20.



COMPLETED VIEW



COMPLETED VIEW



TANNER TOOL AND DIE

KIT #
MARCH 2017

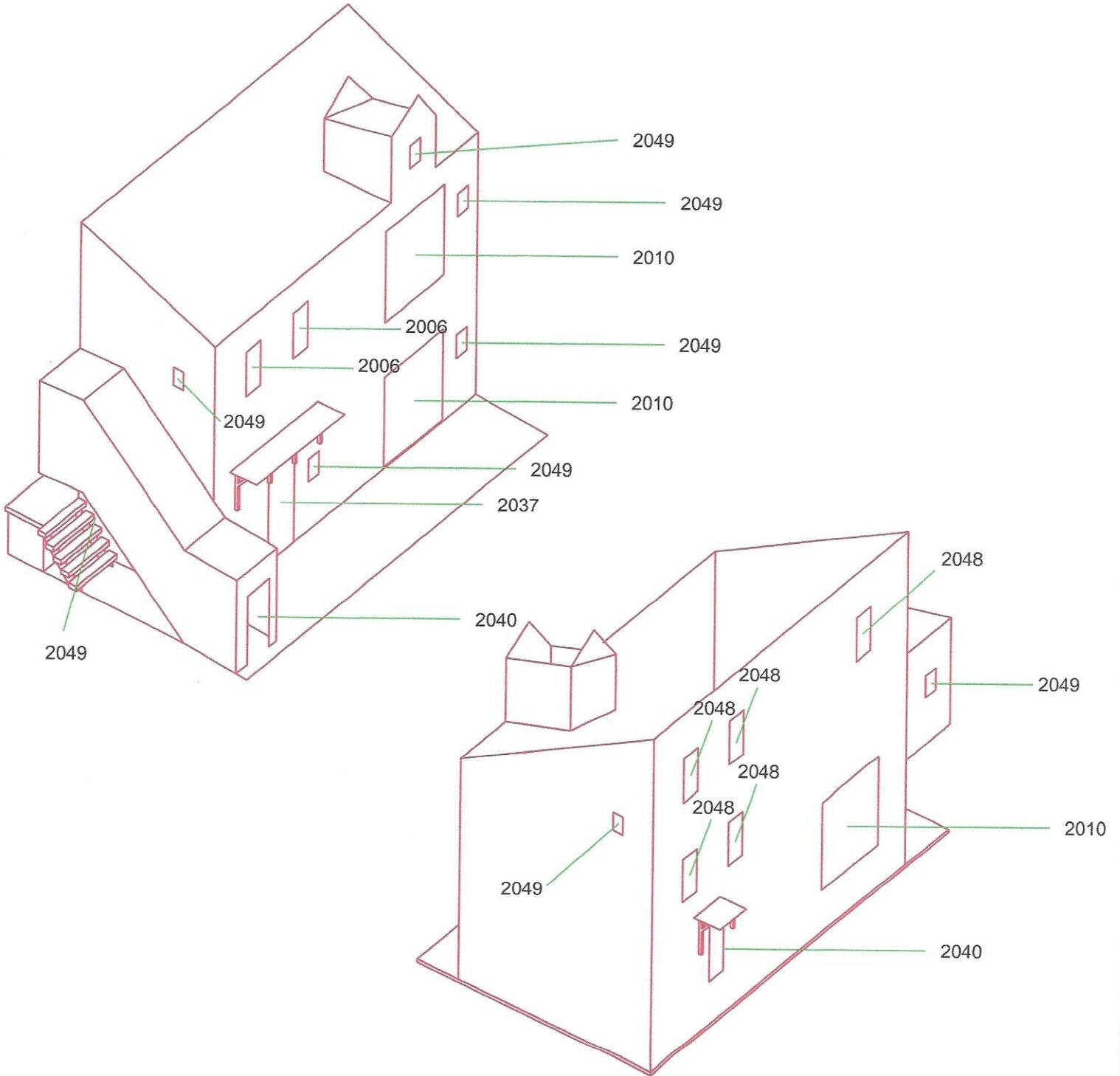
PARTS NEEDED FOR THIS PAGE

QTY	PART#	QTY	PART#
5	2048		
8	2049		
1	2037		
2	2006		
3	2010		
2	2040		

Window & Door Locations
Recommended stage to
install.

O SCALE

NOT TO SCALE



QTY	PART#	QTY	PART#
1	Main roof Z		
2	Dormer roof Y		
1	Roof paper DD		
1	Roof paper EE		

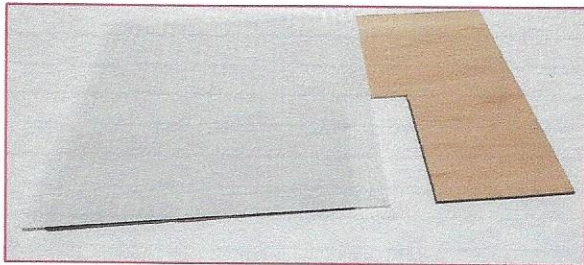
STEP 21 & 22

O SCALE

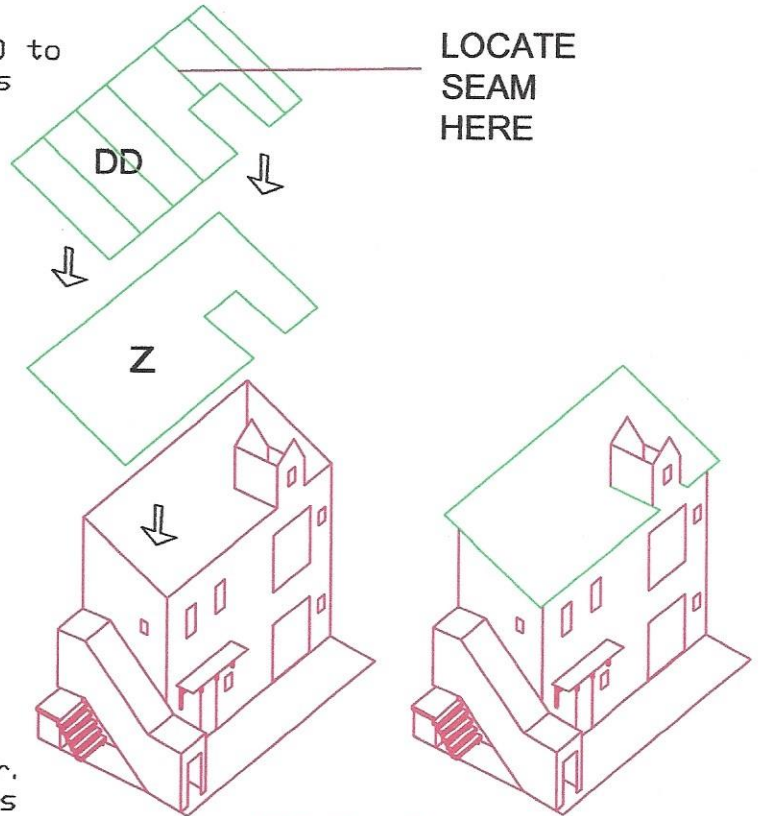
NOT TO SCALE

STEP 21

Measure and cut styrene sheets DD to fit main roof section Z one sheet is not large enough so line up seam behind dormer PIC. 14 . Fig. 21



PIC.12



LOCATE SEAM HERE

FIG. 21

STEP 22

Dry fit dormer roof pieces to dormer. Use 220 grit sand paper to fit angles of dormer, once good fit is achieved glue the panels to structure as shown in Fig. 22. Measure and cut styrene DD to fit roof sections Y and glue. Cut small scrap of styrene to form roof cap and glue.

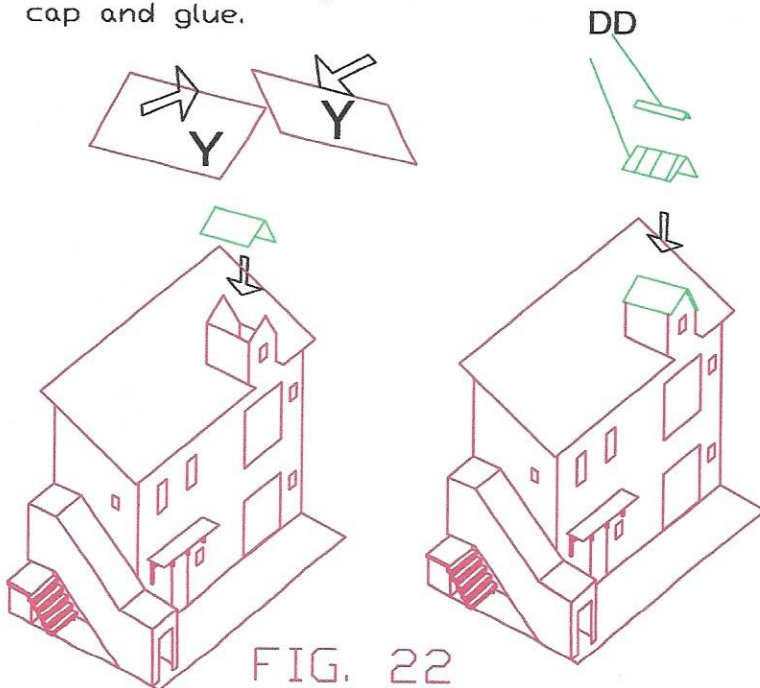
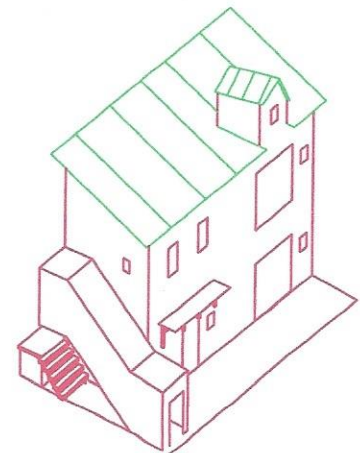


FIG. 22

COMPLETED VIEW



QTY	PART#	QTY	PART#
2	Support T		
1	STRIP XX		
1	Pulley		
1	Block & Tackle		
1	Chain		

STEP 23

O SCALE

NOT TO SCALE

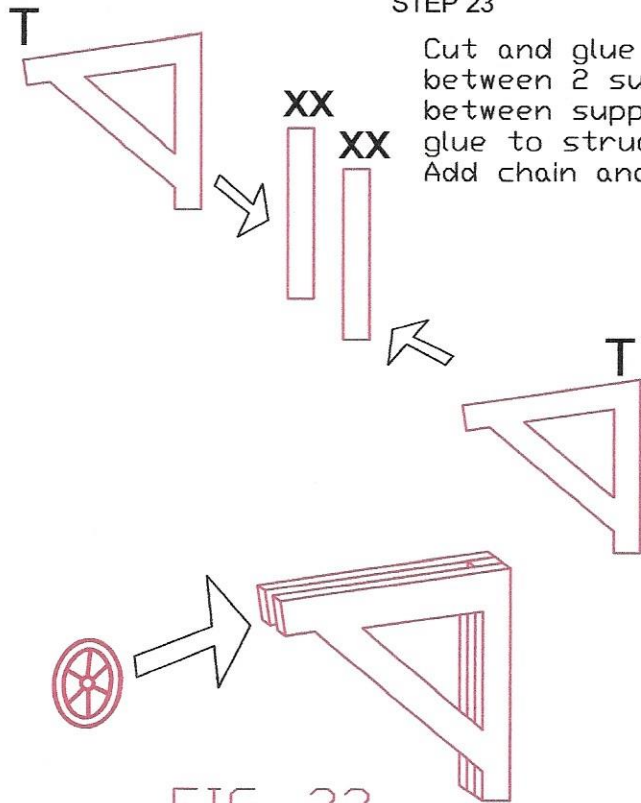


FIG. 23

STEP 23

Cut and glue 2 strips of wood XX between 2 support T then pulley between supports, as in Fig. 23 Then glue to structur as shown in Fig. 24. Add chain and hook to complete hoist.

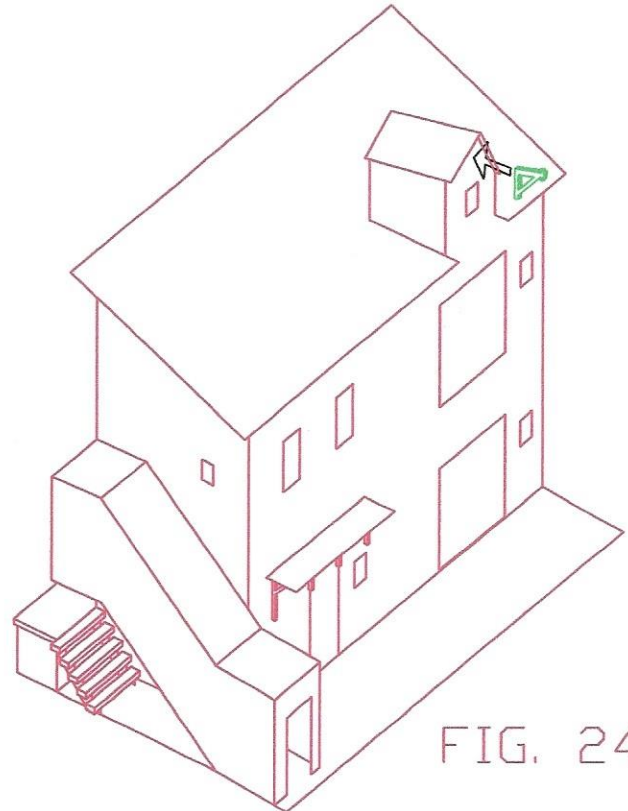
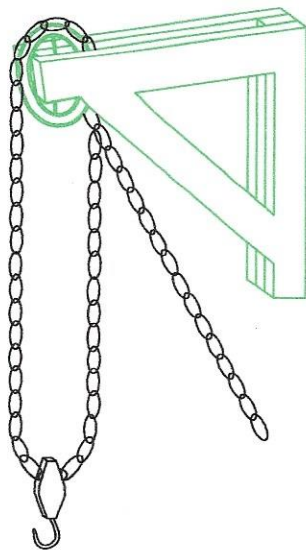
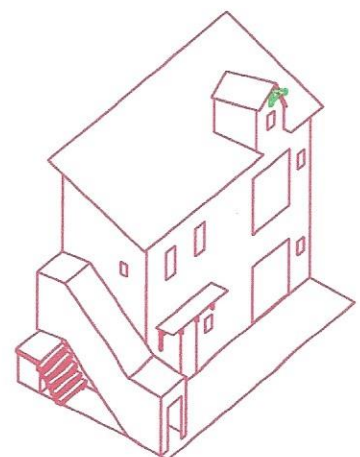


FIG. 24



COMPLETED VIEW



TANNER TOOL AND DIE

KIT #
MARCH 2017

PARTS NEEDED FOR THIS PAGE

QTY	PART#	QTY	PART#
4	Sign Support CC		
1	Sign Board AA		
2	Sign Board BB		
1	Water Slide Signs		

STEP 24 & 25

O SCALE

NOT TO SCALE

STEP 24

Prepair sign boards for waterslide decals. Paint the fronts of all 3 blank sign boards white and the backs a dark color such as black, or brown ect. Let completely dry then lightly sand white side with 220 grit paper. Apply water side decals to white side. Allow to dry. Spray dry signs with Testers Dull Coat or equivalent.

STEP 25

Mark with pencil the dimensions on back side of sign board AA as shown in Fig. 25 Glue supports CC as shown to back side of sign AA along pencil marks. See, Fig. 26

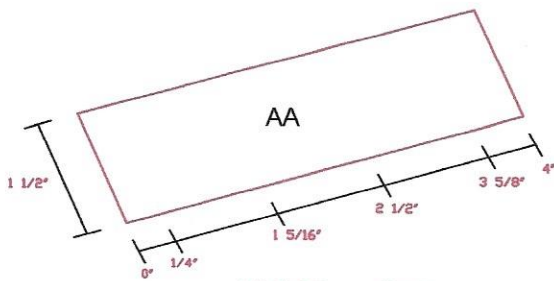


FIG. 25

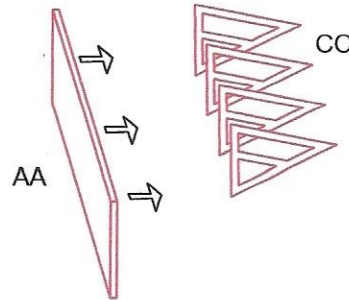
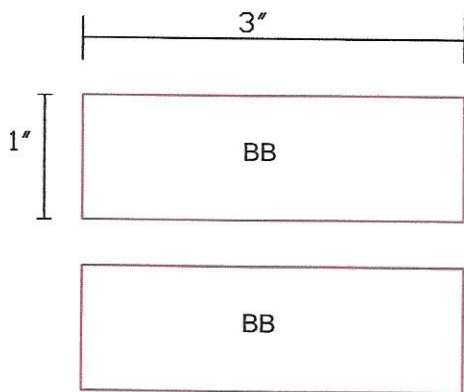


FIG. 26



COMPLETED VIEW



TANNER TOOL AND DIE

KIT #
MARCH 2017

PARTS NEEDED FOR THIS PAGE

QTY	PART#	QTY	PART#
1	T Stove Pipe		

PAGE 19

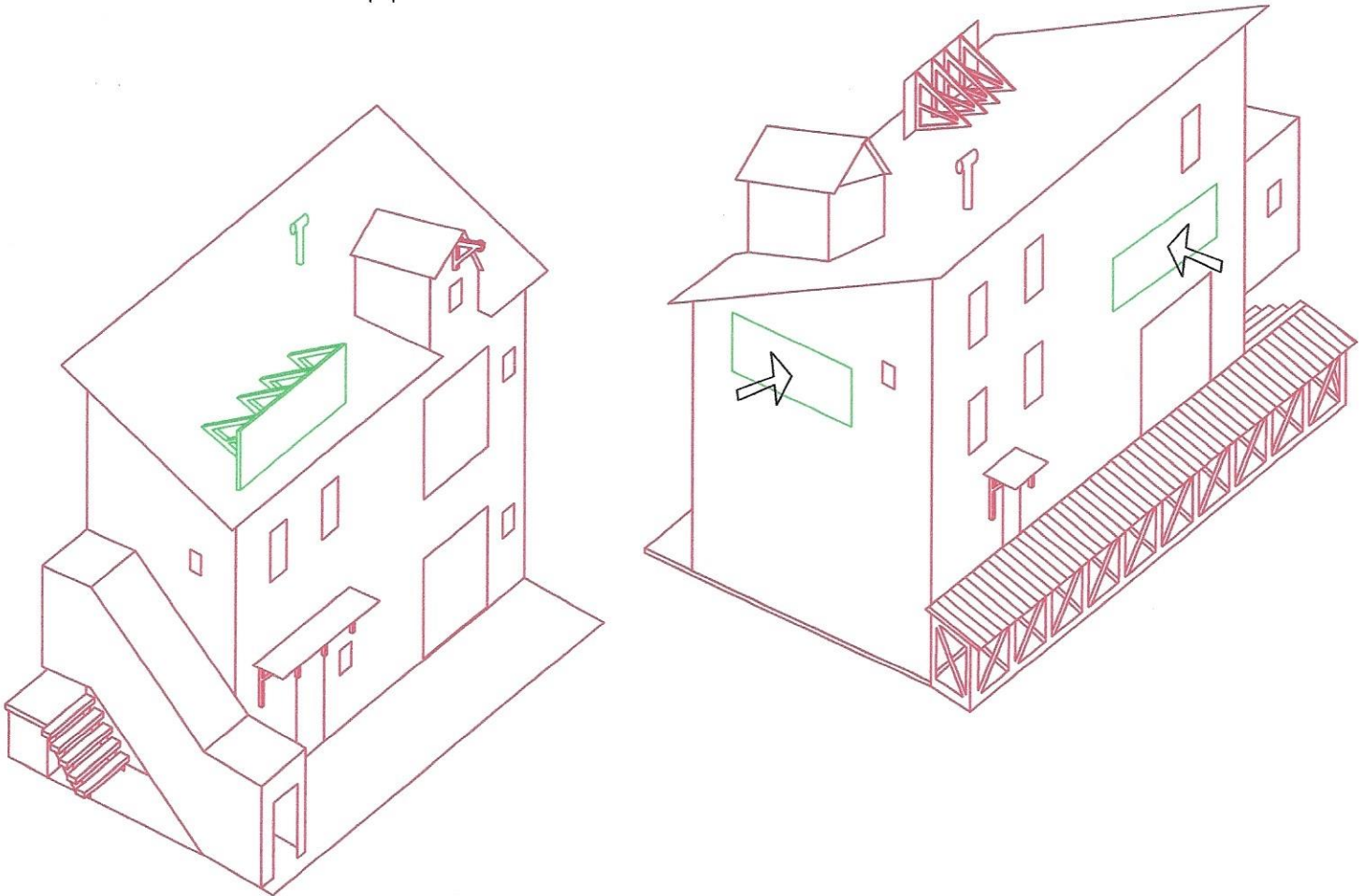
STEP 26

O SCALE

NOT TO SCALE

STEP 26

See recommended locations for signage and stove pipe. Drill $\frac{7}{64}$ " hole to mount stove pipe.



Weather entire structure with light Ink/alcohol. or weathering powders.