



Mouse over image to zoom

Details about 10pcs DC12V delay relay delay Turn on /Turn off switch module timer up to 1 hour

Item Information

| [Add to watch list](#)

Item specifics

Condition: New: A brand-new, unused, unopened, undamaged item in its original packaging (where packaging is ... [Read more about the condition](#)

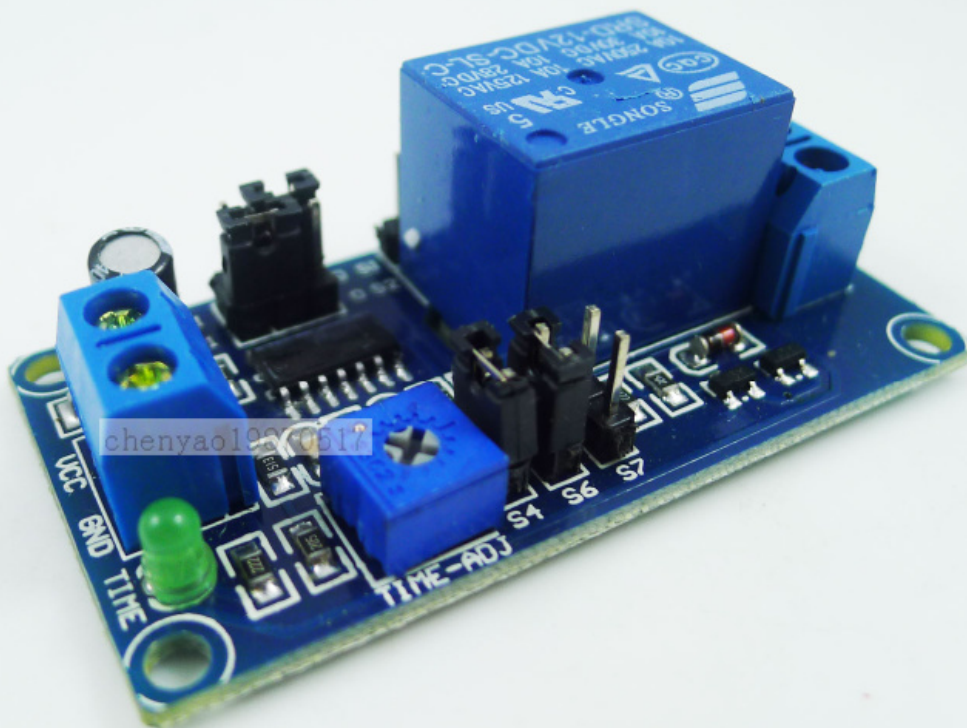
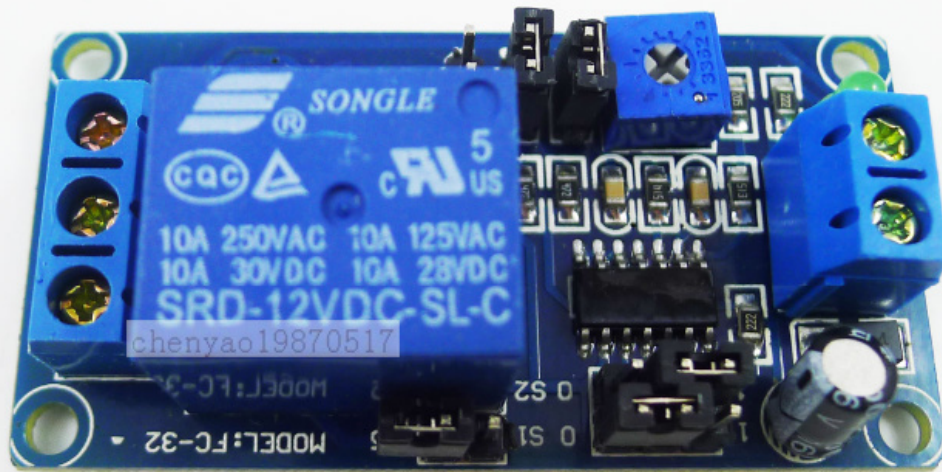
QTY Electronics

[Visit my eBay store](#)

[Sign up for newsletter](#)



12V delay relay Turn on / Turn off module





Description

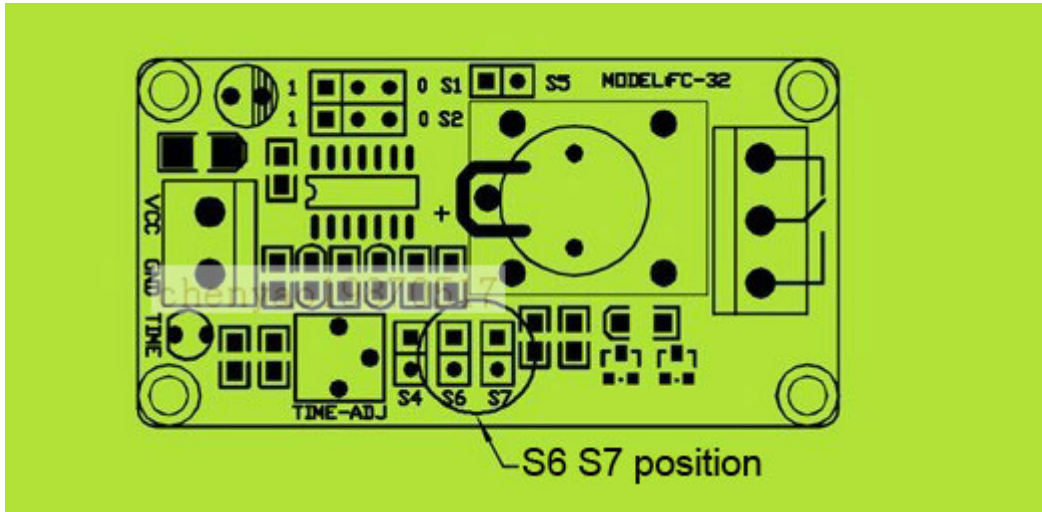
- **Description :**

12V delay turn on or delay off module

1. With 8 time ranges selected shortest 0.1s most up to 1 hour
2. Protection against power reversal protection diode, better protection module
3. Can be accessed by a large current load (250V ac 10A or 30V dc 10A)
4. With delay adjustment potentiometer clockwise adjustment time longer

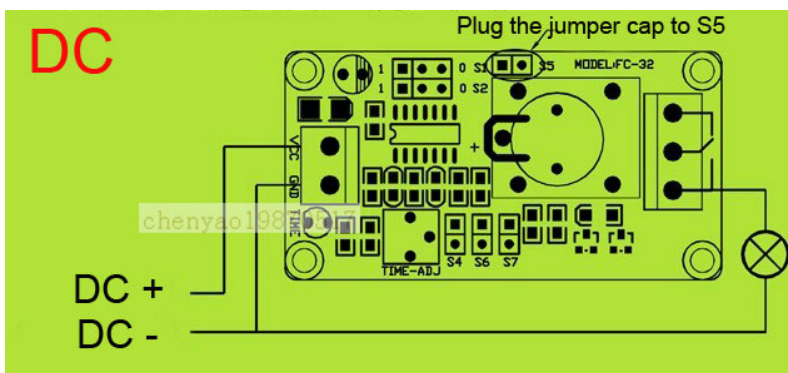
Function:

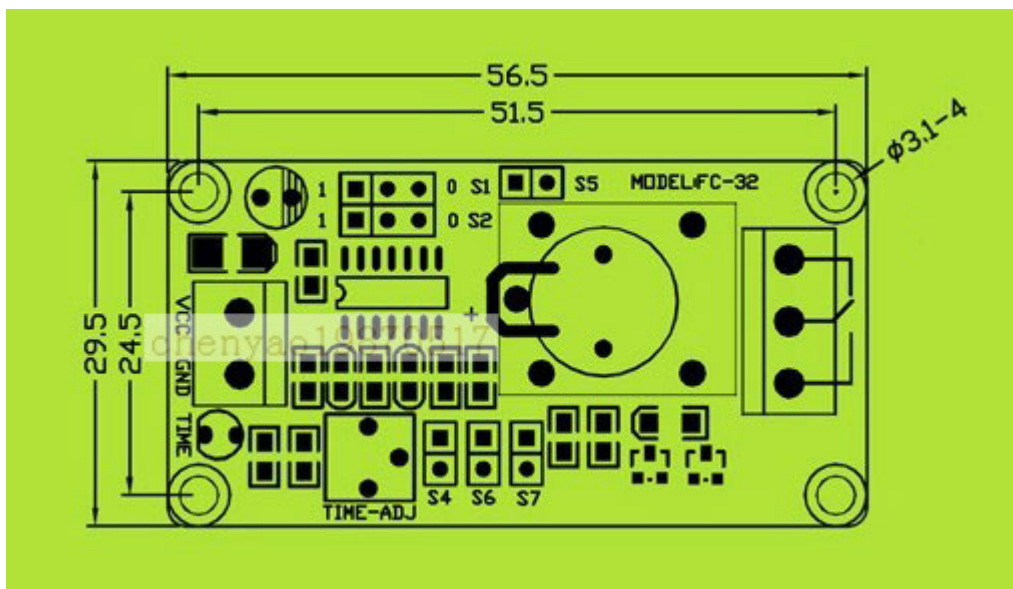
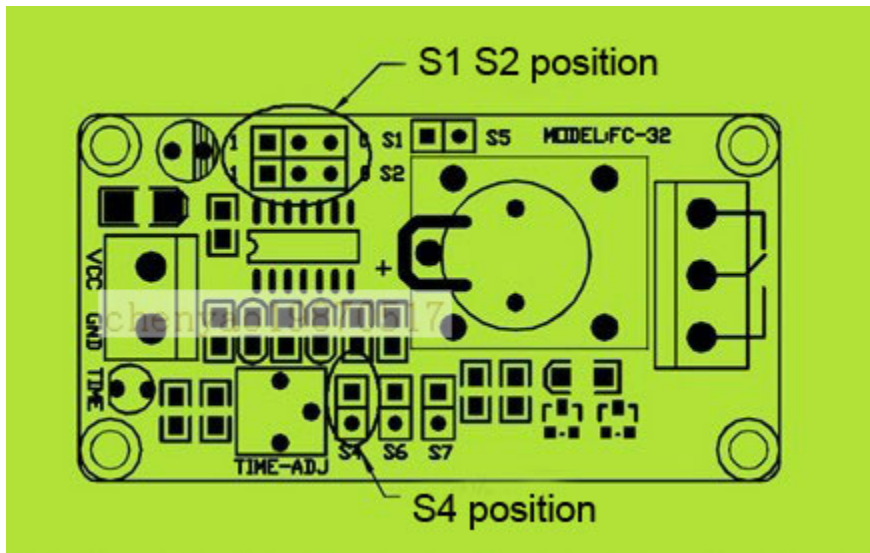
Plug On S6 ,delay turn off
plug on s7, delay turn on



Timer

S1	S2	don't plug cap S4	plug cap S4	Diagram
0	1	0.13S-1.3S	1.5S-14.5S	
1	0	0.5S-5.2S	6S-58S	
0	0	4.4S-42S	48S-463S	
1	1	38S-340S	389S-3700S	





Electrical parameter:

Input voltage: 12V

Quiescent dissipation: 5.5mA

Maximum power consumption: 42mA

Relay load capacity:

250V 10A AC (2500W ideal power AC)

30V 10A DC (300W ideal power DC)

Package:

10pcs * 12V delay relay Turn on/ Turn off module

