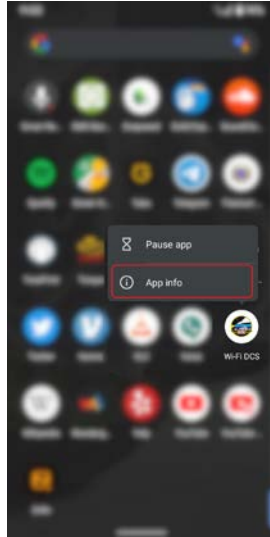


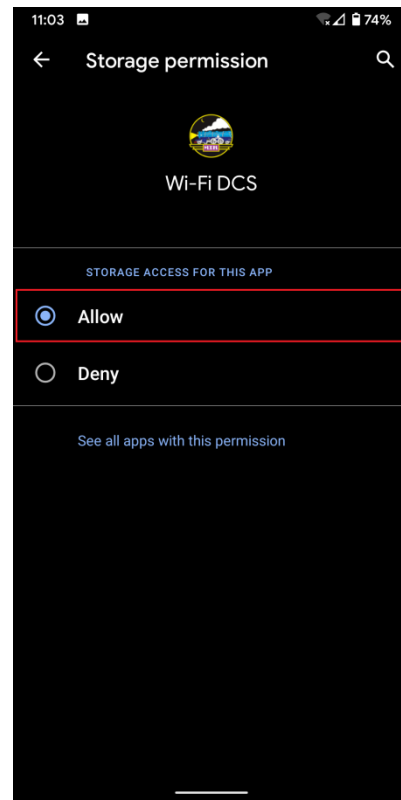
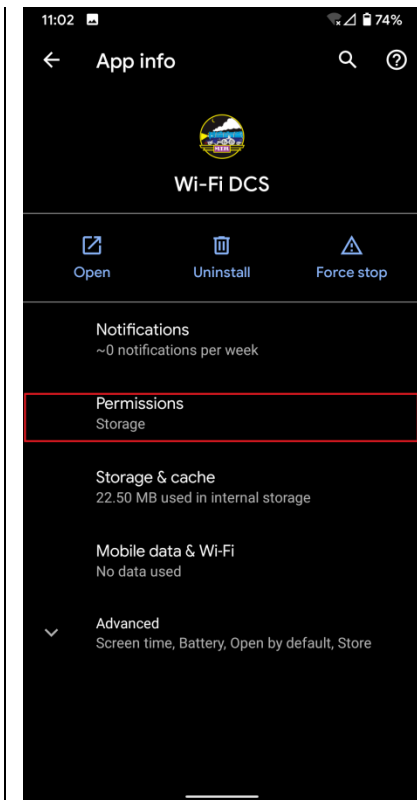
Things to Check First

Make sure the MTH DCS WIFI App has storage permissions.

1. Open the system app drawer (slide up from the bottom of the home screen).
2. **LONG Press** the **Wi-Fi DCS** app, and select **App info**



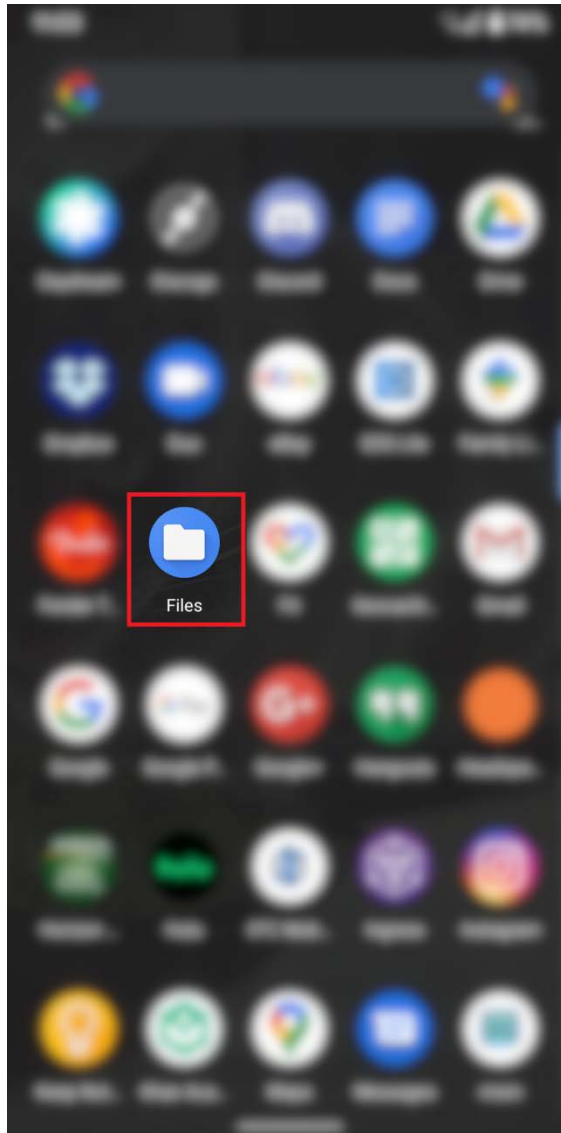
3. Select **Permissions**. Verify that **Allow** is selected.



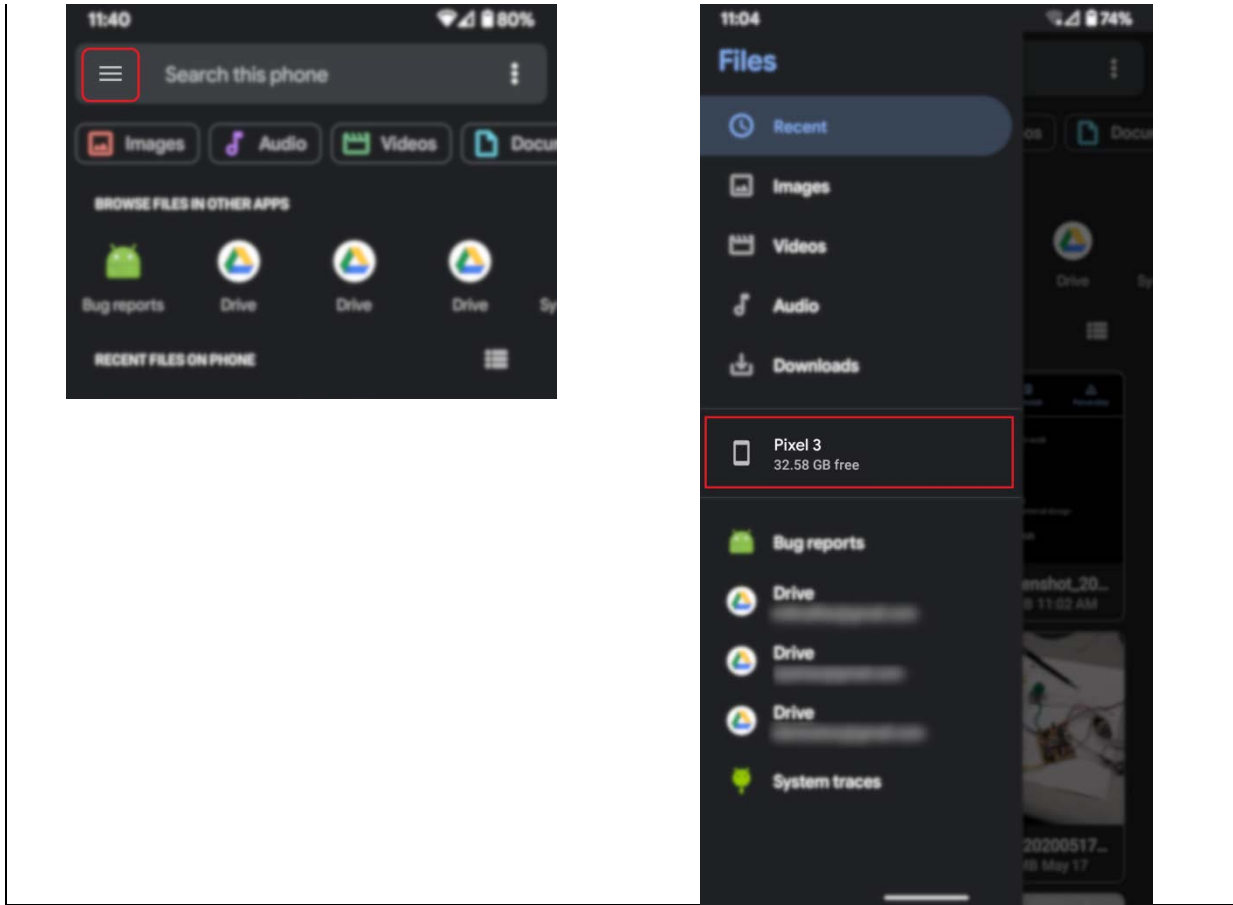
Locating Exported Remote Data

After selecting the **Export** feature in the **Advanced** menu in the DCS app in Android 10, the files will be saved in a location on your Android phone. The following is an outline on how to locate the exported data file.

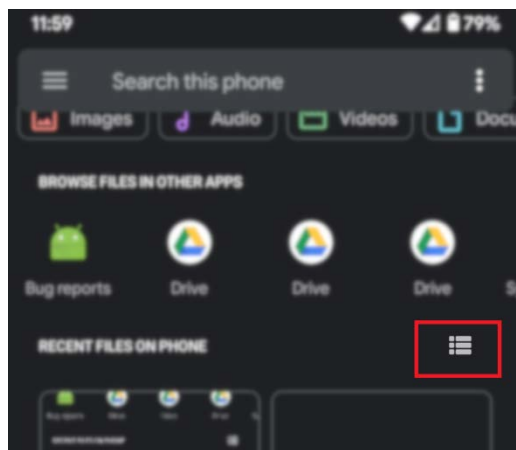
1. Open the system app drawer (slide up from the bottom of the home screen).
2. Open the **Files** app.



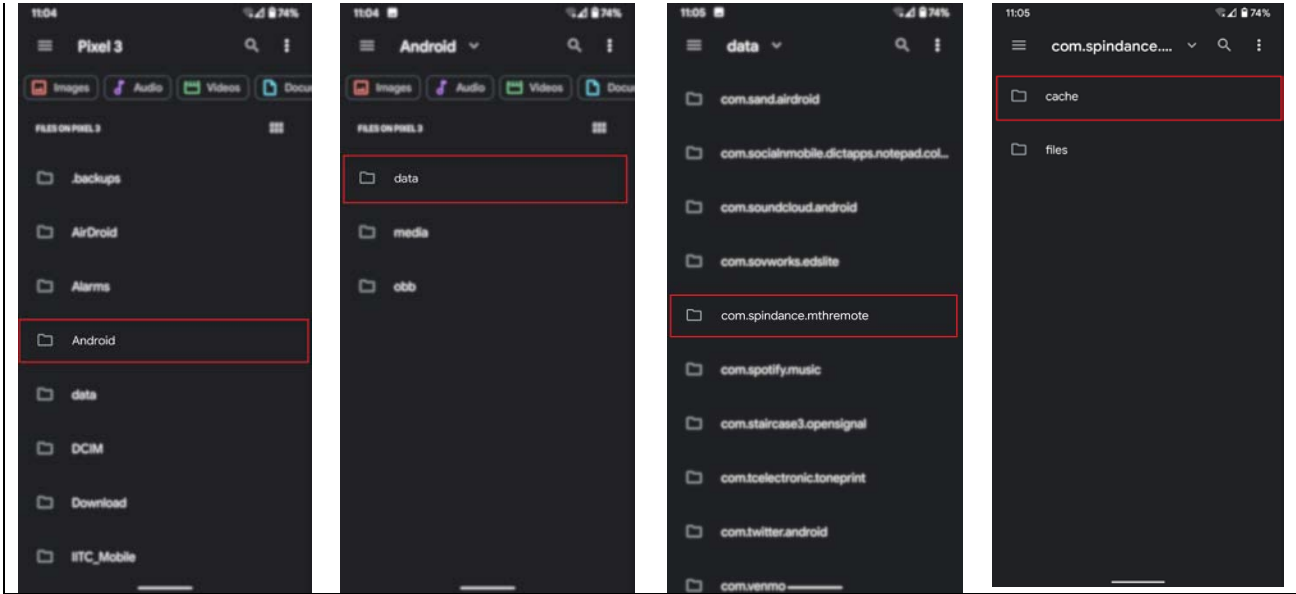
3. Open the 'hamburger' menu in the *upper-left hand* corner of the screen. Select the **Android phone icon**-- in this case, a **Pixel 3**.



4. Select the **List View** icon before proceeding. This will expand each item's file name for easier viewing.



5. Select **Android**, then, **data**. Scroll down to select **com.spindance.mthremote**, then, **cache**.



6. The export data file or files can be found in this folder.

